

Forensic Wildlife Parts and their Product Identification and Individualization Using DNA Barcoding

Raju Panday*, Dinesh K. Jha, Nirajan Thapa, Basant R. Pokharel and Nanda K. Aryal

National Forensic Science Laboratory (NFSL), Khumaltar, Lalitpur, Nepal

Abstract: Despite very strict wildlife protection acts in several countries and trading laws such as CITES, illegal trading and poaching of wildlife is still active mostly because of the use of their parts in Chinese medicinal products and ornaments. For successfully identifying wildlife and their parts, mitochondrial DNA sequencing is being used now-a-days. DNA bar coding using fragments of cytochrome b and cytochrome oxidase I genes are frequently utilized for mammalian species identification. This mini review describes some of the mtDNA sequences and STR markers used for mammalian species identification in the field of forensic wildlife along with the problems associated and their possible solutions.

Keywords: Cytochrome b, cytochrome oxidase, DNA bar coding, wildlife forensics.

INTRODUCTION

Earth is losing wildlife at an alarming rate and only few new species are being discovered each year. Illegal trade of wildlife parts and their products is worth more than 20 billion per year in black market [1]. In Nepal, every year millions worth of animal parts such as ivory, tiger skin and bone, bear bile, rhino horn and other wildlife materials are illegally transported across the borders mostly *via* Tibet. This kind of illegal trade creates a serious threat to the global as well as to the local diversity either directly or indirectly. Consequently the role of international organizations such as WWF (World Wildlife Fund), IUCN (International Union for Conservation of Nature) and CITES (Convention on International Trade in Endangered Species of Wild Flora and Fauna) becomes more valuable than ever in protecting wildlife and their habitat. Habitat destruction causes increase of wildlife poaching due to their ever increasing vulnerability of being caught by humans, so that wildlife trade should also be cautiously examined and monitored for any critical illegal transactions [2].

WILDLIFE CONSERVATION

CITES regulates the global trade of wildlife within its 180 signatory countries [3]. It operates by listing wildlife (approximately 5,600 animal and 30,000 plant species are currently listed by CITES) in one of its three appendices (Appendix I, II and III). Since it is a trading treaty, it allows free and controlled trade of wildlife parts and their products from non-endangered wildlife (flora and fauna both), whose survival is not yet threatened but the species registered in Appendix I (630 fauna and 301 flora) [3] are banned from such trade, except for scientific research and other specific purposes. Although CITES is legally binding to the signatory

countries, it does not replace national laws. Problems arise when species of CITES appendix I cannot be verified by the laboratory when confiscated and sent for identification by the forest officers. Most of the time, domestic animal parts are confused with parts from protected and endangered animal species, as it is difficult to identify them through morphological and anatomical studies only. The difficulties that arise after the capture of wildlife parts or their products are: (i) determining the species that was killed with the help of a bloodstain only, (ii) when the sample is in altered or powdered form, (iii) identification up to family of animal but not to the specific species, and (iv) sometimes not even a clue, regarding the wildlife from which the sample originated, can be deciphered from basic morphological or anatomical test procedure [4].

Species identification becomes more problematic because most of the times it's not the whole animal part but rather only a small piece or some modified part such as musk cone, rhinoceros horn, elephant ivory, elephant tail hair, tiger skin and bone that is traded [1]. This leads to complexity in precisely identifying the concerned protected wildlife species. The suspected animal is then either excluded or not excluded or a family of the animal is discerned for the species but not the species itself. This limitation can be remedied by using molecular tools and techniques for wildlife parts and product identification. Newer techniques such as DNA sequencing can help in identifying the species from which the product originated with great accuracy and reliability.

SPECIES IDENTIFICATION

For the purpose of species identification, although for most of the intact specimens the morphological observations may be enough, but in samples which contain only some part of an animal or their modified products (e.g. powder), DNA based methods are the methods of choice. In the text that follows, we first describe the limitations of conventional

*Address correspondence to this author at the NFSL, Khumaltar, DNA Unit, Nepal; Tel: +977 01 5526927; Fax: +977 01 5532853; E-mail: raj8office@gmail.com

methods of identification and then provide details of the DNA based methods.

Conventional Methods and Their Limitations

When gross morphological characteristics, such as whole skin or skeleton are present in a sample, then the general morphological, anatomical, microscopic and osteological analysis can identify the species with certain confidence [5]. When skin samples are present, hair analysis and comparison with reference sample can be fruitful in identifying the species of origin for that sample, but it requires a database of known/reference hairs and a high level of expertise in this field. Sometimes, antigen antibody reactions such as Ouchterlony test can also be used to identify animal products such as tissue samples. However, it has several disadvantages; firstly there is difficulty in getting the specific antibody as not all animal species specific antibodies have been produced [6, 7]. Furthermore the test can sometimes produce cross-reactions in non-target species [8]. Therefore, it has been suggested that the test should only be considered as a presumptive test in the forensic environment [9].

More reliable results can be obtained by DNA-based tests such as Random Amplified Polymorphic DNA (RAPD) [10, 11], Amplified Fragment Length Polymorphism (AFLP) [12, 13] and Random Fragment Length Polymorphism (RFLP) [14-16]. These allow a specific DNA profile to be produced for an individual animal. However, they suffer from the fact that they are not always reproducible and in the long run the preparation of a reference database is also not possible [17, 18]. These tests also cannot reliably separate mixture samples and in addition, within the same species some variations exist between samples which cannot be separated. In these tests, the band patterns obtained are influenced by many factors such as the quality of template, buffer, dNTPs, and primer concentration [19].

Random amplified polymorphic DNA (RAPD) markers can be amplified relatively easily using standard protocols. There is no requirement for any prior genetic information about the species in question and the method is relatively simple and inexpensive [20]. A more severe weakness of RAPD is that the low stringency PCR required in the procedure, results in a high genotyping error rate and in lower genotyping reproducibility compared to single locus markers [21]. In AFLP and RFLP, the tests can be used to

generate species-specific band patterns even if no prior gene sequence knowledge is known [22, 23]. Several restriction enzymes are required for generation of specific band pattern for a species [24]. These methods cannot separate mixtures having the same restriction patterns and sometimes cannot separate closely related species [25, 26].

DNA Barcoding and Mitochondrial DNA Sequencing

The above mentioned limitations in traditional DNA-based methods for identification, led to the development of a more robust concept of DNA bar coding around the world in recent years. DNA barcode, is a short segment of a gene, usually taken from mitochondrial DNA region, which is used to identify wildlife species and their parts.

DNA barcoding uses the regions of DNA that show considerable interspecies variation and no or little intra-species variation. Table 1 briefly summarizes the currently followed DNA based tests that are used for wildlife species identification and individualization. Among them the most popular DNA based method used in wildlife identification has been the mitochondrial DNA sequencing [1, 27, 28]. Human mtDNA is 16,569 bp in length which contains 13 genes, 2 rRNAs and 22 tRNAs (Fig. 1). The mtDNA is usually larger in plants (180 to 700 kbp) than in animals (14 to 20 kbp) due to the presence of a number of introns and pseudo genes [29]. In mammals, the two mtDNA strands are designated as H and L strands. H strand is heavier than L strand since it is rich in GC content. It separates in CsCl (Cesium chloride) gradient separation [30]. The reference sequence used is the 5'-3' L strand [30].

Mitochondrial DNA has some features, listed below, that make it a useful tool for species identification:

- Each cell has 100s of copies of mtDNA [31, 32].
- Mitochondrial DNA is better protected from degradation due to its own rigid membrane which is high in protein content. It can even be found in highly degraded samples that do not contain much nuclear DNA (e.g. hair, bone) [33].
- There is no proofreading activity during mtDNA replication so there is greater chance of mutation or change in DNA sequence than in the nuclear DNA [34, 35].

Table 1. Summary of different DNA based genetic tests currently available.

S. No.	Genetic Test	Species Identification	Individual Identification	Advantages	Disadvantages
1.	mtDNA sequencing	Yes	No	Suitable for degraded DNA samples	Heteroplasmy
2.	STR (Short Tandem Repeat) typing	No	Yes	Highly informative markers for many applications	Allele dropout in degraded DNA samples
3.	Species specific primers	Yes	No	Capable of rapid screening	Knowledge of species boundaries required
4.	Pyro-sequencing	Yes	Yes	Rapid high throughput genotyping of STRs and SNPs	Only short (10 to 500 bp) DNA fragments can be sequenced
5.	SNPs	Yes	Yes	Highly reproducible	About five times more loci required than STRs

sequence has also been shown to be superior to COI gene for amphibian species identification [49]. They have a greater sequence variation than Cyt b gene for a species and the process is robust and well validated [50].

Cytochrome c Oxidase I (COI) Gene

Barcode for life database (BOLD) by the Smithsonian Institute has been using COI as the standard loci for species identification [51]. COI gene segment from the sample is first sequenced, and is then compared with the known published sequence database, consortium for the Barcode of Life (CBOL) (Fig. 2) [52]. It is possible to identify unknown samples once the sequences from enough species are accumulated on the CBOL database (Table 2). A 648 segment of the COI gene (also called DNA barcode), which has the capability to distinguish 95% of the current species in the world, is sequenced [52]. It has advantages over Cyt b in that there is a broad range of primers applicable across a wide range of taxa and genetic changes occur more slowly than in Cyt b [53, 54]. The COI gene is the current focus of a worldwide effort to characterize all species through a single genetic entity. This will cause reliance on CBOL and the test will become limited to the identification of species whose sequences have been uploaded onto CBOL database. Currently, CBOL has in its database 2,891,971 sequences from 192,480 species of animals, plants and fungi [55].

It should be noted that universal primers used for COI gene do not amplify consistently in all species in a genus/family/order due to possible point mutations at the primer binding site that results in incomplete amplification [9]. These sites could be further investigated for use as a possible SNP based identification test. Another drawback of using COI gene is the lack of an extensive database across all the genus/family/order of animals. For example, only about 16% of the total mammalian species sequences have been added to the CBOL database which needs to be extensively expanded in order to accommodate remaining species.

Control Region (CR) Sequence

The control region (CR) or D loop in humans has two hyper-variable regions (HV1 and HV2) with a central region in between (Fig. 1). Proteins, responsible for replication and transcription, bind to the D loop [56-58]. In animals, however, CR is composed of three domains including ETAS (extended termination associated sequences) domain, central domain and CSB (conserved sequence block) domain [21]. The CR region of tiger has been divided into five parts: hypervariable region I (HVI), repeat sequence 2 (RS 2), conserved control region (CCR), repeat sequence 3 (RS 3), and hypervariable region II (HVII) [59].

The CR spans between the tRNA^{Phe} and the tRNA^{Pro} genes and includes the transcription initiation sites for both strands [60, 61]. The CR is usually considered to be the fastest-evolving region of the genome and for that reason it is broadly used to perform intra- and inter-specific phylogenetic studies [62].

One such study involved analysis of the 403 bp fragment of mitochondrial DNA CR for the genetic diversity and

population structure of Chinese water deer, which revealed 18 different haplotypes in 40 samples [63].

It is important in closely related lineages, but not much suitable for species identification because of back and parallel mutations observed. It is used for species identification in animals and for individual identification in humans using the HV1 and HV2 regions of D loop [64].

Individual Identification Using Nuclear DNA

Mitochondrial DNA analysis only gives the identification of species but cannot discern the individuality among the same species being identified. Identification of an individual based on its unique genetic profile can be used to monitor the number of animals entering commercial markets, even if they are sold as meat or highly processed products. Individual identification, which is most commonly achieved using STR profiling of nuclear DNA instead of mtDNA, may be required in cases where a DNA match is being investigated between an illegal kill (e.g. remains) and evidence obtained from a poacher (e.g. skin or meat) [65]. However, not much work has been carried out in the field of non-human STR typing. Few papers such as that of Singh *et al.* [66] discovered a DNA marker called Ple46 in four species of big cats (*Panthera* species) in India where different animals had different lengths of the microsatellite marker (Table 2). The repeat sequence was CA bases; domestic cat had 10 (CA) repeats, lion had 22 repeats, leopard had 14-15 repeats and tiger had 7-8 repeats while the heterozygosity level for Ple46 marker was high (>75%) [66].

In another study, more than 29 STR markers were used in different combinations for individual identification of domestic dog [84]. While performing individual identification with STRs, generating a Random Match Probability (RMP) value is also necessary if there is a match between the evidence and reference sample. For this reason, STR DNA databases are required which, for wild endangered species, are very scarce. Some existing relevant databases are that of African Elephants [85], Mule deer in Alberta [79], Wild boars in Italy [81] and Tigers in India [86]. STR technology has been used for the prosecution of humans accused of animal cruelty [87] and theft of cattle [28], birds of prey [88] in forensic wildlife crime cases.

However, there is a problem with the current STR profiling being used for wildlife species individualization. Even when much sequence data is available, it does not have much value in forensic cases because most of the literature is flooded with dinucleotide STR markers which are not ideal in forensic science because of the generation of stutter products [66]. At least tetra nucleotide or larger STR markers need to be identified in order to be of any use in forensic identification. Therefore, much of the QC, QA and method validation must be conducted before using STR markers for a species identification in forensic caseworks.

PROBLEMS ASSOCIATED WITH mtDNA MARKERS AND THEIR POSSIBLE REMEDIES

Mixed samples are the most often experienced problems with the mtDNA markers. In case of a contaminated sample with DNA from another species, the results obtained will be

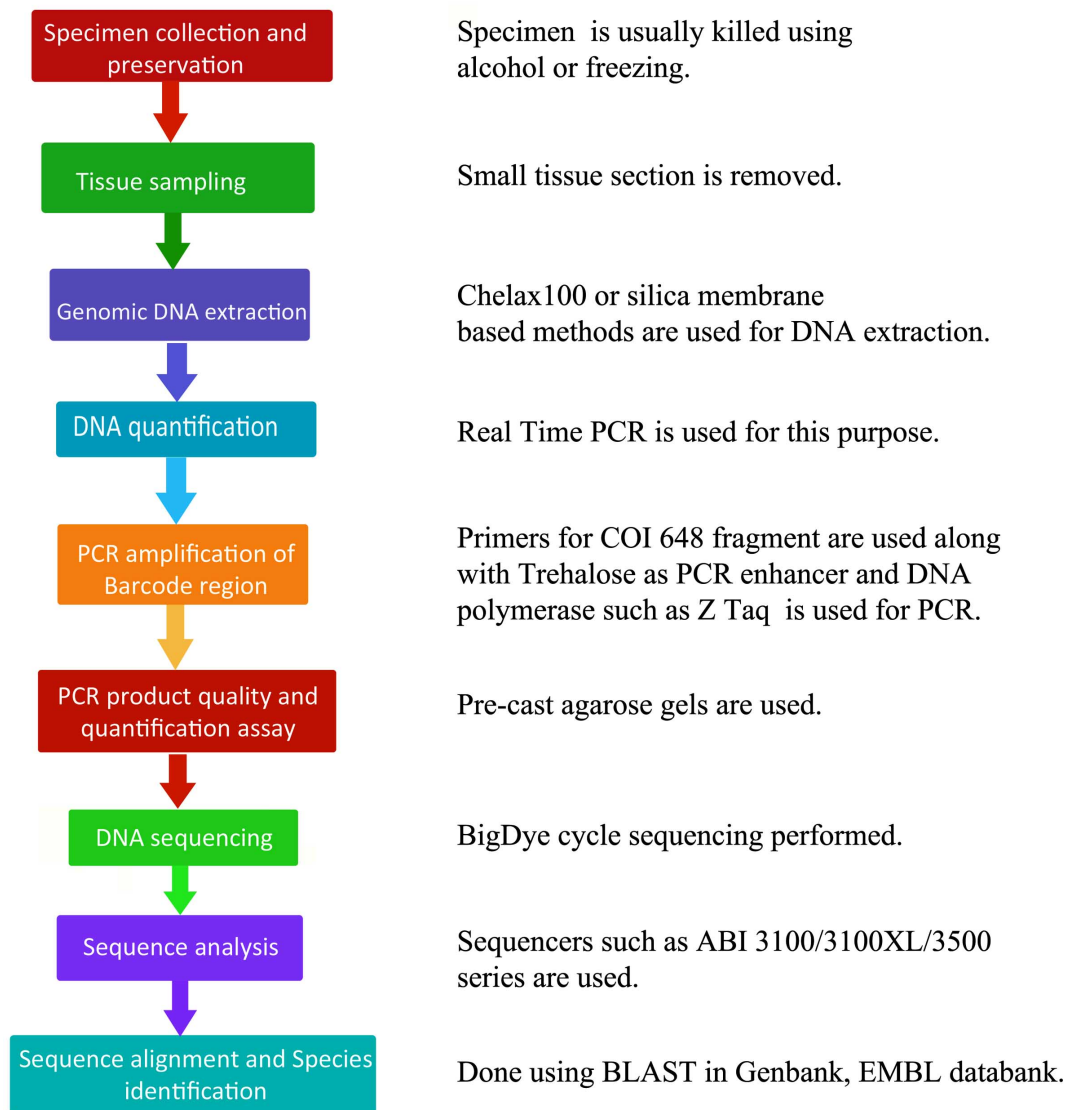


Fig. (2). A diagrammatic process of DNA Barcoding using COI gene fragment (Adapted from <http://www.barcoding.si.edu/dnabar coding.htm>).

unreliable because of the use of universal primers that bind to DNA of both species [56] which is very difficult to mitigate. In an approach to identify species in mixed samples, analysis of CR inter-specific length polymorphism enabled a very simple and accurate mammalian species identification using a single pair of universal primers [89].

Another problem associated with the current generation sequencing of mtDNA genes is that if a hybrid species is protected by law and it is produced by using a non-protected maternal animal species, then the mtDNA analysis will result in the profile of the maternal non protected species [90]. This kind of problems can be very serious when dealing with the hybrid protected species identification process [91].

Heteroplasmy is yet another issue that can create problems when dealing with identification [92, 93]. It is the situation where an individual has different copies of mtDNA due to mutation [94]. This does not affect species identification but can cause difficulty when looking within the species [95].

VALIDATION OF METHODS FOR FORENSIC SCIENCE

Validation is the process of demonstrating that a laboratory process is robust, reliable, and reproducible in the hands of the personnel who performs the test [96]. Commercially available technology and the kits that are used in DNA analysis in forensic cases are validated by the manufacturer before the product is released to the market. Therefore, the forensic laboratory has to carry out only some internal verification work so that it can meet the accepted validation requirements [96].

Scientific Working Group on DNA Analysis Methods (SWGDM) and the ISO17025 or IEC17025 laboratory accreditation are the most common standards employed in the forensic field. Both standards were established in the late 1980s under FBI to help forensic scientists in forensic examination. They include testing of technology and verification for the reproducibility against standard samples, samples in more complex matrices, mixed samples and

Table 2. Summary of literature for species and individual identification in animals using different genes and their fragments.

S. No.	Sample and its Species	DNA Marker Used	Reference
1	Skin; Crocodile	COI (645bp)	[67]
2	Meat, carcass; Reedbuck	COI (650bp)	[68]
3	Hair, leather; Asiatic black bear	COI (708bp)	[69]
4	Feathers; Scarlet macaw	COI (648bp)	[70]
5	Wool, Tibetan Antelope	Cyt b (311bp)	[71]
6	Tissue; Cobra snake	Cyt b (472bp)	[72]
7	Ivory; Elephant	Cyt b (357bp)	[73]
8	Caviar; Sturgeons and paddlefish	Cyt b (850bp)	[74]
9	Meat; Whale species	Cyt b (400bp)	[75]
10	Bile crystals; Asiatic black bear	Cyt b (175bp)	[76]
11	Meat, hair; Roe deer	Cyt b (900bp)	[54]
12	Meat; Indian peafowl	Cyt b (472bp)	[77]
13	Horn, Rhinoceros	Cyt b (402bp)	[41]
14	Blood; Tiger	STR markers	[78]
15	Blood; Eurasian badger	STR markers	[54]
16	Solid tissue; Mule deer	STR markers	[79]
17	Tail tissue; Sea horse	STR markers	[80]
18	Solid tissue; Wild boar	STR markers	[81]
19	Blood, horn; Rhinoceros	STR markers	[82]
20	Tusk; African Elephant	STR markers	[83]

samples exposed to a variety of environmental conditions. Rules are guided to ensure that reliable results are obtained with the actual forensic samples in the laboratory [97].

Forensic scientists need to be well aware of the legal system and the rules and expectations, as an expert witness, if they are to bring wildlife forensics into the court system. This will require the use of validated laboratory methods and accredited laboratory to ensure reproducibility and admissibility of the test upon which the court can rely.

CONCLUSION

With an ever increasing wildlife crime and no sign of decreasing, there is an urgent need to develop forensic processes for wildlife identification that meet international standards. Each and every wildlife species should be identifiable. There are many standard protocols for species identification and currently mitochondrial DNA based identifications are mostly being followed around the world. With BOLD making COI gene as a standard for species identification in wildlife cases, there exist validated techniques that can also be legally used. Supplementing DNA sequencing results in identification, with STR markers for individualization, can help build confidence in results by the courts. Thus the research concepts used in human identification can also be used in wildlife crime and its eradication.

CONFLICT OF INTEREST

The author confirms that this article content has no conflict of interest.

ACKNOWLEDGEMENTS

Declared none.

REFERENCES

- [1] Alacs, E.A.; Georges, A.; FitzSimmons, N.N.; Robertson, J. DNA detective: a review of molecular approaches to wildlife forensics. *Forensic Sci. Med. Pathol.*, **2010**, *6*, 180-194.
- [2] Lips, K.R.; Brem, F.; Brenes, R.; Reeve, J.D.; Alford, R.A.; Voyles, J.; Carey, C.; Livo, L.; Pessier, A.P.; Collins, J.P. Emerging infectious disease and the loss of biodiversity in a Neotropical amphibian community. *Proceedings of the National Academy of Sciences*. **2006**, pp. 3165-70.
- [3] Convention on International Trade in Endangered Species of Wild Flora and Fauna. <http://www.cites.org/eng/disc/species.html> (Accessed on March 28, **2014**).
- [4] Hsieh, H.M.; Chiang, H.L.; Tsai, L.C.; Lai, S.Y.; Huang, N.E.; Linacre, A.; Lee, J.C. Cytochrome b gene for species identification of the conservation animals. *Forensic Sci. Int.*, **2001**, *122*, 7-18.
- [5] Linacre, A.; Tobe, S.S. An overview to the investigative approach to species testing in wildlife forensic science. *Inves. Gen.*, **2011**, *2*(1), 2.
- [6] Saferstein, R. In *Forensic Science Handbook Chapter 7*; Prentice Hall: New Jersey, **1982**; pp. 267-296.

- [7] Macedo-Silva, A.; Barbosa, S.F.; Alkmin, M.G.; Vaz, A.J.; Shimokomaki, M.; Tenuta-Filho, A. Hamburger meat identification by dot-ELISA. *Meat Sci.*, **2000**, *56*, 189-192.
- [8] Bird, G.W.G. Paradoxical findings in Ouchterlony tests. *Cell Mol. Life Sci.*, **2005**, *17*, 408.
- [9] Wilson-Wilde, L.; Norman, J.; Robertson, J.; Sarre, S.; Georges, A. Current issues in species identification for forensic science and the validity of using the cytochrome oxidase I (COI) gene. *Forensic Sci. Med. Pathol.*, **2010**, *6*, 233-241.
- [10] Martinez, I.; Yman, I.M. Species identification in meat products by RAPD analysis. *Food Res. Int.*, **1998**, *31*, 459-466.
- [11] Partis, L.; Wells, R.J. Identification of fish species using random amplified polymorphic DNA (RAPD). *Mol. Cell. Probes*, **1996**, *10*, 435-441.
- [12] Vos, P.; Hogers, R.; Bleeker, M.; Reijans, M.; Lee, T.; Hornes, M. AFLP-a new technique for DNA fingerprinting. *Nuc. Acids Res.*, **1995**, *23*, 4407-4414.
- [13] Hakki, E.E.; Uz, E.; Sag, A.; Atasoy, S.; Akkaya, M.S. DNA fingerprinting of *Cannabis sativa* L. accessions using RAPD and AFLP markers. *Forensic Sci. Int.*, **2003**, *136*, 31.
- [14] Abdel-Rahman, S.M.; Ahmed, M.M.M. Rapid and sensitive identification of buffalo's, cattle's and sheep's milk using species-specific PCR and PCR-RFLP techniques. *Food Control*, **2007**, *18*, 1246-1249.
- [15] Bravi, C.M.; Liron, J.P.; Mirol, P.M.; Ripoli, M.V.; Peral-Garcia, P.; Giovambattista, G. A simple method for domestic animal identification in Argentina using PCR-RFLP analysis of cytochrome b gene. *Legal Med.*, **2004**, *6*, 246-251.
- [16] Verkaar, E.L.C.; Nijman, I.J.; Boutaga, K.; Lenstra, J.A. Differentiation of cattle species in beef by PCR-RFLP of mitochondrial and satellite DNA. *Meat Sci.*, **2002**, *60*(4), 365-369.
- [17] Datwyler, S.L.; Weiblen, G.D. Genetic variation in hemp and marijuana (*Cannabis sativa* L.) according to amplified fragment length polymorphisms. *J. Forensic Sci.*, **2006**, *51*, 371-375.
- [18] Campbell, D.; Duchesne, P.; Bernatchez, L. AFLP utility for population assignment studies: analytical investigation and empirical comparison with microsatellites. *Mol. Ecol.*, **2003**, *12*, 1979-1991.
- [19] Guha, S.; Kashyap, V. K. Molecular identification of lizard by RAPD and FINS of mitochondrial 16S rRNA gene. *Legal Med.*, **2006**, *8*(1), 5-10.
- [20] Lee, J.C.I.; Chang, J.G. Random amplified polymorphic DNA polymerase chain reaction (RAPD PCR) fingerprints in forensic species identification. *Forensic Sci. Int.*, **1994**, *67*(2), 103-107.
- [21] Arif, I.A.; Khan, H.A.; Bahkali, A.H.; Ali, A.; Homaidan, A.; Farhan, A.H.A.; Sadoon, M.A.; Shobrak, M. DNA marker technology for wildlife conservation. *S. J. Biol. Sci.*, **2011**, *18*, 219-225.
- [22] Calvo, J. H.; R. Osta; Zaragoza, P. Species-specific amplification for detection of bovine, ovine and caprine cheese. *Milchwissenschaft*, **2002**, *57*, 444-446.
- [23] Black, W.C. PCR with arbitrary primers: Approach with care. *Insect Mol. Bio.*, **1993**, *2*, 1-6.
- [24] Wolf, C.; Rentsch, J.; Hubner, P. PCR-RFLP analysis of mitochondrial DNA: A reliable method for species identification. *J. Agri. Food Che.*, **1999**, *47*, 1350-1355.
- [25] Welsh, J.; McClelland, M. Fingerprinting genomes using PCR with arbitrary primers. *Nuc. Acids Res.*, **1990**, *18*, 7213-7218.
- [26] Zehner, R.; Zimmermann, S.; Mebs, D. RFLP and sequence analysis of the cytochrome b gene of selected animals and man: methodology and forensic application. *Int. J. Legal Med.*, **1998**, *111*, 323-327.
- [27] Nelson, K.; Melton, T. Forensic Mitochondrial DNA Analysis of 116 Casework Skeletal Samples. *J. Forensic Sci.*, **2007**, *52*, 557-561.
- [28] Cassidy, B.G.; Gonzales, R.A. DNA testing in animal forensics. *J. Wild. Man.*, **2005**, *69*, 1454-62.
- [29] Lynch, M. *The Origins of Genome Architecture*; Sinauer Associates Inc: **2007**.
- [30] Pereira, F.; Carneiro, J.; Asch, B. A guide for mitochondrial DNA analysis in non-human forensic investigations. *The Open For. Sci. J.*, **2010**, *3*, 33-44.
- [31] Satoh, M.; Kuroiwa, T. Organization of multiple nucleoids and DNA molecules in mitochondria of a human cell. *Exp. Cell Res.*, **1991**, *196*, 137-140.
- [32] Prado, M.; Calo-Mata, P.; Villa, T.; Cepeda, A.; Barros-Velazquez, J. Co-amplification and sequencing of a cytochrome b fragment affecting the identification of cattle in PCR-RFLP food authentication studies. *Food Che.*, **2007**, *105*, 436-442.
- [33] Gray, M.W. Origin and evolution of mitochondrial DNA. *Ann. Rev. Cell Biol.*, **1989**, *5*, 25-50.
- [34] Saferstein, R. *Criminalistics: An Introduction to Forensic Science* Chapter 13, Prentice Hall International (UK) Limited: London, **2004**, pp. 353-394.
- [35] Clayton, T.M.; Guest, J.L.; Urquhart, A.J.; Gill, P.D. A genetic basis for anomalous band patterns encountered during DNA STR profiling. *J. Forensic Sci.*, **2004**, *49*(6), 1207-1214.
- [36] Rastogi, G.; Dhame, M.; Walujkar, S.; Kumara, A.; Patole, M.; Shouche, Y. Species identification and authentication of tissues of animal origin using mitochondrial and nuclear markers. *Meat Sci.*, **2007**, *76*, 666-674.
- [37] Zhang, D.X.; Hewitt, G.M. Nuclear integrations: Challenges for mitochondrial DNA markers. *T. Ecol. Evol.*, **1996**, *11*(6), 247-251.
- [38] Anderson, S.; Bankier, A.T.; Barrel, B.G.; de Bruijn, M.H.L.; Coulson, A.R.; Drouin, J.; Eperon, I.C.; Nierlich, D.P.; Roe, B.A.; Sanger, F.; Schreier, P.H.; Smith, A.J.H.; Staden, R.; Young, I.G. Sequence and organization of the human mitochondrial genome. *Nature*, **1981**, *290*(5806), 457-465.
- [39] Linacre, A. Application of mitochondrial DNA technologies in wildlife investigations and species identification. *Forensic Sci. Rev.*, **2006**, *18*, 1-8.
- [40] Irwin, D.; Kocher, T.; Wilson, A. Evolution of the cytochrome b gene of mammals. *J. Mol. Evol.*, **1991**, *32*, 128-144.
- [41] Hsieh, H.M.; Huang, L.H.; Tsai, L.C.; Kuo, Y.C.; Meng, H.H.; Linacre, A.; Lee, J.C.I. Species identification of rhinoceros horns using the cytochrome b gene. *Forensic Sci. Int.*, **2003**, *136*, 1-11.
- [42] An, J.; Lee, M.Y.; Min, M.S.; Lee, M.H.; Lee, H. A molecular genetics approach for species identification of mammals and sex determination of birds in a forensic case of poaching from South Korea. *Forensic Sci. Int.*, **2007**, *167*, 59-61.
- [43] Sanches, A.; Tokumoto, P.M.; Peres, W.A.M.; Nunes, F.L.; Gotardi, M.S.T.; Carvalho, C.S.; Pelizzon, C.; Godoi, T.G.; Galetti, M. Illegal hunting cases detected with molecular forensics in Brazil. *Inves. Gen.*, **2012**, *3*(1), 17.
- [44] Tobe, S.S.; Kitchener, A.C.; Linacre, A.M.T. Reconstructing mammalian phylogenies: a detailed comparison of the cytochrome b and cytochrome oxidase subunit I mitochondrial genes. *PLoS One*, **2010**, *5*, 108-125.
- [45] Janczewski, D.N.; Modi, W.S.; Stephens, J.C.; O'Brain, S.J. Molecular evaluation of mitochondrial 12S rRNA and cytochrome b sequences in the Pantherine lineage of Felidae. *Mol. Biol. Evol.*, **1995**, *12*, 690-707.
- [46] Jogayya, K.N.; Meganathan, P.R.; Dubey, B.; Haque, I. Mitochondrial 16S ribosomal RNA gene for forensic identification of crocodile species. *J. Forensic Legal Med.*, **2013**, *20*, 334-338.
- [47] Shukla, M.S.; Pidiyar, V.; Bhave, N.A.; Patole, M.S.; Shouche, Y.S. PCR amplification and sequencing of mitochondrial 12S rRNA gene fragment from *Muntiacus muntjak* (Indian muntjak). *Curr. Sci.*, **2001**, *80*, 617-618.
- [48] Lei, R.; Jian, Z.; Hu, Z.; Yang, W. Phylogenetic relationships of Chinese antelopes (sub family Antilopinae) based on mitochondrial Ribosomal RNA gene sequences. *J. Zool.*, **2003**, *261*, 227-237.
- [49] Vences, M.; Thomas, M.; van der Meijden, A.; Chiari, Y.; Vieites, D.R. Comparative performance of the 16S rRNA gene in DNA barcoding of amphibians. *Front. Zool.*, **2005**, *2*, 1-12.
- [50] Kitano, T.; Umetsu, K.; Tian, W.; Osawa, M. Two universal primer sets for species identification among vertebrates. *Int. J. Legal Med.*, **2007**, *121*, 423-427.
- [51] Ratnasingham, S.; Hebert, P.D.N. BOLD: The Barcode of Life Data System (www.barcodinglife.org). *Mol. Ecol. Notes*, **2007**, *7*(3), 355-364.
- [52] Hebert, P.D.N.; Cywinska, A.; Ball, S.L.; deWaard, J.R. Biological identifications through DNA barcodes. *Proc. R. Soc. Lon.*, **2003**, *B 270* (1512), 313-321.
- [53] Folmer, O.; Black, M.; Hoeh, W.; Lutz, R.; Vrijenhoek, R. DNA primers for the amplification of mitochondrial cytochrome c oxidase I from diverse metazoan invertebrates. *Mol. Mar. Biol. Biotech.*, **1994**, *3*, 294-299.
- [54] Lynch, M.; Jarrell, P.E. A method for calibrating molecular clocks and its application to animal mitochondrial DNA. *Genetics*, **1993**, *135*, 1197-208.
- [55] The barcode library. <http://www.ibol.org/resources/barcode-library/> (Accessed on March 23, **2014**)
- [56] Pun, K.M.; Albrecht, C.; Castella, V.; Fumagalli, L. Species identification in mammals from mixed biological samples based on

- mitochondrial DNA control region length polymorphism. *Electrophoresis*, **2009**, *30*(6), 1008-1014.
- [57] Scheffler, I. *Mitochondria*, 2nd Ed.; John Wiley & Sons: New Jersey, **2008**.
- [58] Falkenberg, M.; Larsson, N.G.; Gustafsson, C.M. DNA replication and transcription in mammalian mitochondria. *Annu. Rev. Biochem.*, **2007**, *76*, 679-699.
- [59] Kitpipit, T.; Linacre, A. The complete mitochondrial genome analysis of the tiger (*Panthera tigris*). *Mol. Biol. Rep.*, **2012**, *39*, 5745-5754.
- [60] Attardi, G. Animal mitochondrial DNA: An extreme example of genetic economy. *Int. Rev. Cytol.*, **1985**, *93*, 93-148.
- [61] Saccone, C.; Attimonelli, M.A.; Sbisà, E. Structural elements highly preserved during the evolution of the D-Loop containing region in vertebrate mitochondrial DNA. *J. Mol. Evol.*, **1987**, *26*, 205-211.
- [62] Brown, G.; Gadaleta, G.; Pepe, G.; Saccone, C.; Sbisà, E. Structural conservation and variation in the D-loop-containing region of vertebrate mitochondrial DNA. *J. Mol. Biol.*, **1986**, *192*, 503-511.
- [63] Hu, J.; Fang, S.G.; Wan, Q.H. Genetic diversity of Chinese water deer (*Hydropotes inermis inermis*): implications for conservation. *Biochem. Genet.*, **2006**, *44*, 161-172.
- [64] Sbisà, E.; Tanzariello, F.; Reyes, A.; Pesole, G.; Saccone, C. Mammalian mitochondrial D-loop region structural analysis: identification of new conserved sequences and their functional and evolutionary implications. *Gene*, **1997**, *205*, 125-140.
- [65] Dawney, N.; Ogden, R.; Thorpe, R.S.; Pope, L.C.; Dawson, D.A.; McEwing, R. A forensic STR profiling system for the Eurasian badger: A framework for developing profiling systems for wildlife species. *Forensic Sci. Int.: Genet.*, **2008**, *2*, 47-53.
- [66] Singh, A.; Gaur, A.; Shailaja, K.; Bala, B.S.; Singh, L. A novel microsatellite (STR) marker for forensic identification of big cats in India. *For. Sci. Int.*, **2004**, *141*, 143-147.
- [67] Eaton, M.J.; Meyers, G.L.; Kolokotronis, S.O.; Leslie, M.S.; Martin, A.P.; Amato, G. Barcoding bushmeat: Molecular identification of Central African and South American harvested vertebrates. *Conser. Gen.*, **2010**, *11*, 1389-1404.
- [68] Dalton, D.L.; Kotze, A. DNA barcoding as a tool for species identification in three forensic wildlife cases in South Africa. *For. Sci. Int.*, **2011**, *207*, e51-e54.
- [69] Jun, J.; Han, S.H.; Jeong, T.J.; Park, Y.C.; Lee, B.; Kwak, M. Wildlife forensics using mitochondrial DNA sequences: Species identification based on hairs collected in the field and confiscated tanned Felidae leathers. *Genes and Genomics*, **2011**, *33*, 721-726.
- [70] Abe, H.; Hayano, A.; Inoue-Murayama, M. Forensic species identification of large macaws using DNA barcodes and microsatellite profiles. *Mol. Bio. Rep.*, **2012**, *39*, 693-699.
- [71] Lee, J.C.I.; Tsai, L.C.; Yang, C.Y.; Liu, C.L.; Huang, L.H.; Linacre, A.; Hsieh, H.M. DNA profiling of Shahtoosh. *Electrophoresis*, **2006**, *27*(17), 3359-3362.
- [72] Gaur, A.; Singh, C.S.; Sreenivas, A.; Singh, L. DNA-based identification of a snake in a wine bottle using universal primers: A case of mistaken identity. *Forensic Sci. Int.*, **2012**, *214*, e51-e53.
- [73] Lee, E.J.; Lee, Y.H.; Moon, S.H.; Kim, N.Y.; Kim, S.H.; Yang, M.S.; Choi, D.H.; Han, M.S. The identification of elephant ivory evidences of illegal trade with mitochondrial cytochrome b gene and hypervariable D-loop region. *J. Forensic Legal Med.*, **2013**, *20*, 174-178.
- [74] Doukakakis, P.; Pikitch, E.K.; Rothschild, A.; DeSalle, R.; Amato, G.; Kolokotronis, S.O. Testing the effectiveness of an international conservation agreement: Market place forensics and CITES caviar trade regulation. *PLoS One*, **2012**, *7*, e40907.
- [75] Baker, C.S.; Steel, D.; Choi, Y.; Lee, H.; Kim, K.S.; Choi, S.K.; Ma, Y.U.; Hambleton, C.; Psihoyos, L.; Brownell, R.L.; Funahashi, N. Genetic evidence of illegal trade in protected whales links Japan with the US and South Korea. *Biol. Lett.*, **2010**, *6*(5), 647-650.
- [76] Peppin, L.; McEwing, R.; Carvalho, G.R.; Ogden, R. A DNA-based approach for the forensic identification of Asiatic black bear (*Ursus thibetanus*) in a traditional Asian medicine. *J. Forensic Sci.*, **2008**, *53*, 1358-1362.
- [77] Gupta, S.K.; Verma, S.K.; Singh, L. Molecular insight into a wildlife crime: The case of a peafowl slaughter. *Forensic Sci. Int.*, **2005**, *154*, 214-217.
- [78] Xu, Y.C.; Li, B.; Li, W.S.; Bai, S.Y.; Jin, Y.; Li, X.P.; Gu, M.B.; Jing, S.Y.; Zhang, W. Individualization of tiger by using microsatellites. *Forensic Sci. Int.*, **2005**, *151*, 45-51.
- [79] Jobin, R.M.; Patterson, D.; Zhang, Y. DNA typing in populations of mule deer for forensic use in the Province of Alberta. *Forensic Sci. Int. Genet.*, **2008**, *2*, 190-197.
- [80] Sanders, J.G.; Cribbs, J.E.; Fienberg, H.G.; Hulburd, G.C.; Katz, L.S.; Palumbi, S.R. The tip of the tail: Molecular identification of seahorses for sale in apothecary shops and curio stores in California. *Conser. Genet.*, **2008**, *9*, 65-71.
- [81] Caratti, S.; Rossi, L.; Sona, B.; Origlia, S.; Viara, S.; Martano, G.; Torre, C.; Robino, C. Analysis of 11 tetrameric STRs in wild boars for forensic purposes. *Forensic Sci. Int. Genet.*, **2010**, *4*, 339-342.
- [82] Harper, C.K.; Vermeulen, G.J.; Clarke, A.B.; de Wet, J.I.; Guthrie, A.J. Extraction of nuclear DNA from rhinoceros horn and characterization of DNA profiling systems for white (*Ceratotherium simum*) and black (*Diceros bicornis*) rhinoceros. *Forensic Sci. Int. Genet.*, **2013**, *7*, 428-433.
- [83] Wasser, S.K.; Mailand, C.; Booth, R.; Mutayoba, B.; Kisamo, E.; Clark, B.; Stephens, M. Using DNA to track the origin of the largest ivory seizure since the 1989 trade ban. *Proceedings of the National Academy Science*, **2007**, *104*(10), 4228-4233.
- [84] Asch, B. van; Pereira, F. State-of-the-Art and future prospects of Canine STR-Based Genotyping. *The Open Forensic Sci. J.*, **2010**, *3*, 45-52.
- [85] Wasser, S.K.; Shedlock, A.M.; Comstock, K.; Ostrander, E.A.; Mutayoba, B.; Stephens, M. In: *Assigning African elephant DNA to geographic region of origin: Applications to the ivory trade*, Proceedings of the National Academy of Sciences of the United States of America, **2004**, pp. 14847-14852.
- [86] Gupta, S.K.; Bhagavatula, J.; Thangaraj, K.; Singh, L. Establishing the identity of the massaged tigress in a case of wildlife crime. *Forensic Sci. Int. Genet.*, **2011**, *5*, 74-75.
- [87] Lorenzini, R. DNA forensics and the poaching of wildlife in Italy: a case study. *Forensic Sci. Int.*, **2005**, *153*, 218-221.
- [88] Dawney, N.; Ogden, R.; Welton, J.H.; Thorpe, R.S.; McEwing, R. Genetic data from 28 STR loci for forensic individual identification and parentage analyses in 6 bird of prey species. *Forensic Sci. Int. Genet.*, **2009**, *3*, 63-69.
- [89] Fumagalli, L.; Cabrita, C.J.; Castella, V. Simultaneous identification of multiple mammalian species from mixed forensic samples based on mtDNA control region length polymorphism. *Forensic Sci. Int. Genet. suppl. Series 2*, **2009**, *2*(1), 302-303.
- [90] Crochet, P.A.; Chen, J.J.Z.; Pons, J.M.; Lebreton J.D.; Hebert, P.D.N.; Bonhomme, F. Genetic differentiation at nuclear and mitochondrial loci among large white-headed gulls: sex-biased inter-specific gene flow? *Evol.*, **2003**, *57*, 2865-78.
- [91] Saetre, G.P.; Borge, T.; Lindell, J.; Moum, T.; Primmer, C.R.; Sheldon, B.C.; Haavie, J.; Johnsen, A.; Ellegren, H. Speciation, introgressive hybridization and nonlinear rate of molecular evolution in flycatchers. *Mol. Ecol.*, **2001**, *10*, 737-749.
- [92] Breton S.; Beaupre H.D.; Stewart D.T.; Hoeh, W.R.; Blier, P.U. The unusual system of doubly uniparental inheritance of mtDNA: isn't one enough? *Trends Genet.*, **2007**, *23*, 465-474.
- [93] Rokas, A.; Ladoukakis, Z.E. Animal mitochondrial DNA recombination revisited. *Trends Ecol. Evol.*, **2003**, *18*, 411-417.
- [94] Sherengul, W.; Kondo, R.; Matsuura, E.T. Analysis of paternal transmission of mitochondrial DNA in *Drosophila*. *Genes Gen. Syst.*, **2006**, *81*, 399-404.
- [95] Ujvari, B.; Dowton, M.; Madsen, T. Mitochondrial DNA recombination in a free-ranging Australian lizard. *Biol. Lett.*, **2007**, *3*, 189-192.
- [96] Butler, J.M. *Forensic DNA typing*, 2nd Ed.; Elsevier: Amsterdam, **2005**.
- [97] Scientific Working Group on DNA Analysis Methods. <http://www.fbi.gov/about-us/lab/biometric-analysis/codis/swgdam-interpretation-guidelines> (Accessed on March 23, 2014).