

# Fast Removal of Malachite Green by Adsorption on Rice Husk Activated Carbon

Y.C. Sharma\*, B. Singh and Uma

Department of Applied Chemistry, Banaras Hindu University, Varanasi 221 005, India

**Abstract:** Application of activated carbon developed from rice husk, an agricultural waste product has been investigated for the removal of malachite green from aqueous solutions and wastewaters. Batch adsorption experiments were carried out for the removal of malachite green from aqueous solutions onto rice husk activated carbon. Effect of important parameters namely initial concentration of dye and contact time, and temperature was studied on removal of the dye. The removal increased from 93.75 to 94.91% by decreasing the initial concentration from 100 to 60 mg/l. Equilibrium data were fitted to Freundlich and Langmuir isotherm equations and the isotherm constants were determined. The monolayer adsorption capacity of rice husk activated carbon for adsorption of the dye was found to be 63.85 mg/g at room temperature.

**Keywords:** Activated carbon, adsorption, aqueous solution, malachite green.

## 1. INTRODUCTION

Dyes and colours are frequently used in industries and textile and pulp and paper industries are reported to utilize large quantities of a number of dyes. According to an estimate more than 1,00,000 commercially available dyes with over  $7 \times 10^5$  tonnes of dyestuff are produced and used annually. The discharge of effluents from these applications is one of the potential sources of their contamination and pollution [1-3]. These industrial discharges are highly colored with high Biochemical Oxygen Demand (BOD) as well as Chemical Oxygen Demand (COD) [4]. Malachite green (MG) is a popular dye and is used extensively. It also finds applications in medical sciences. MG is highly toxic to flora and fauna. It induces risk of cancer, acts as a liver tumor-enhancing agent and many other diseases. The dyes check the biological activity in aquatic lives. They also pose in human. It has mutagenic and carcinogenic characteristics [5,6]. It can cause severe effects on nervous system, reproductive system, liver, brain and kidney. Precipitation, coagulation, flocculation, ion exchange, biosorption, and adsorption are the conventional methods used for removal of dyes. Activated carbons are widely used as industrial adsorbents for separation, purification of solid and liquid phase, and as recovery processes due to their texture being highly porous and they have large capacity to adsorb pollutants but their large scale application is cost intensive [7,8]. The use of activated carbon for removal of malachite green has also been reported [9]. Commercial activated carbons are expensive and therefore, there is a need to search for effective adsorbents for economical wastewater treatment. Utilizing wastes and bio-wastes of environment as adsorbents for the removal of dyes from wastewater is of interest. Number of materials such as coconut coir, bagasse

pith, rice husk, neem tree leaves, and orange peel have been used to prepare carbon from agricultural wastes as low-cost adsorbent materials for the removal of dyes from wastewater [10-14].

In the present studies, rice husk, a non conventional agricultural-waste material, has been indirectly used to prepare activated carbon for the removal of MG from its aqueous solutions.

## 2. MATERIALS AND METHODS

### 2.1. Adsorbent

The rice husk used in the present investigation was procured locally. It was washed and dried in hot air oven at  $110^\circ\text{C}$ . Carbonization was carried out in a quartz tube reactor placed in a tubular muffle furnace at  $450^\circ\text{C}$  for 1 hr in an indigenous experimental set up. A constant nitrogen (99.99%) flow of 150 ml/min was maintained throughout the process. Activation of primary carbon was carried out at  $650^\circ\text{C}$  for 2 hrs under conditions. The carbon was then cooled in inert atmosphere in the presence of nitrogen at room temperature and washed with hot deionized water and 0.5N hydrochloric acid until the pH of sample reached 7.0. The carbon was then again dried in hot air oven at  $110^\circ\text{C}$ , ground and sieved to obtain desired particle size (150  $\mu\text{m}$ ) and stored in desiccators for further use.

#### 2.1.1. Adsorbate

All reagents used in the experiments were analytical grade chemicals and were obtained from Merck, Mumbai, India. Stock solutions of the test reagents were made by dissolving the dye in distilled water. The dye, malachite green oxalate, C.I. Basic Green 4, C.I. Classification Number 42,000, chemical formula =  $\text{C}_{52}\text{H}_{54}\text{N}_4\text{O}_{12}$ , MW = 927.00,  $\lambda_{\text{max}} = 618 \text{ nm}$  (measured value) was supplied by Merck. The chemical structure of malachite green oxalate is shown in Fig. (1).

\*Address correspondence to this author at the Department of Applied Chemistry, Banaras Hindu University, Varanasi 221 005, India; Tel: +91 542 6702865; Fax: +91 542 2306428; E-mail: ysharma.apc@itbhu.ac.in

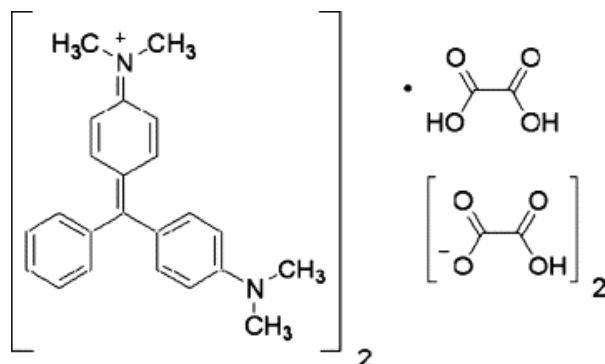


Fig. (1). Chemical structure of malachite green.

## 2.2. METHODS

### 2.2.1. Adsorption Studies

Adsorption experiments were carried out by agitating 0.25 g of rice husk activated carbon (RHAC) to 50 ml of dye solution of the desired dye concentrations in 250 ml stoppered conical flasks, at 150 rpm, 30°C in a thermo stated water bath shaker to reach equilibrium. The dye solution was separated from the adsorbent by centrifugation at 10,000 rpm for 10 min. Residual concentration of dye in supernatant was estimated spectrophotometrically by monitoring the absorbance at 618 nm  $\lambda_{\max}$  using a UV-vis spectrophotometer (Spectronic 20, Bausch & Lomb, USA). Amount of adsorbed dye molecules per g of solid was determined as follows:

$$q_e = (C_o - C_e)V/w \quad (1)$$

where,  $C_o$  is the initial concentration of malachite green (mg/l),  $C_e$  is the equilibrium concentration of dye (mg/l),  $V$  is the volume of the solution (l) and  $w$  is the mass of the rice husk activated carbon (g). The kinetic data were fitted to pseudo first order reaction for the removal of malachite green onto rice husk activated carbon.

## 3. RESULTS AND DISCUSSION

### 3.1. Effect of Contact Time and Initial Concentration

Effect of contact time and initial concentration for removal of malachite green from aqueous solutions is quite

important. The adsorption data for 'uptake of dye vs. contact time at different concentrations' are presented in Fig. (2). The removal increased from 93.75 to 94.91 % by decreasing the initial concentration of MG from 100 to 60 mg/l (Fig. 2).

It is clear from Fig. (2) that the graphs are single and smooth, indicating monolayer coverage of the surface adsorbent by MG. Further, the removal is rapid in initial stages, decreases slowly, and acquired a maxima at 40 min., and maximum removal was found to be 94.91% at 60 mg/l malachite green concentration. The removal increased from 93.75 to 94.91% by decreasing the initial concentration from 100 to 60 mg/l at 30°C, 150 rpm, and 150  $\mu$ m adsorbent particle size.

#### 3.1.1. Kinetic Studies

The kinetic modeling of the removal of dye malachite green by rice husk activated carbon was carried out and data were treated with pseudo first order kinetic model [15].

$$\log (q_e - q) = \log q_e - (K_{ad}/2.303).t \quad (2)$$

where  $q$  and  $q_e$  (both in mg/g) are amounts of dye adsorbed at any time and at equilibrium respectively, and  $K_{ad}$  ( $\text{min}^{-1}$ ) is the rate constant of adsorption. The straight line plots of ' $\log (q_e - q)$  vs  $t$ ' (Fig. 3) confirm that the process of removal is governed by first-order kinetics. The linear plots also demonstrate the applicability of pseudo first order nature of the process of removal. The values of  $K_{ad}$  were determined by the slopes of the graphs of Fig. (3) and the value of  $K_{ad}$  was found to be  $2.38 \times 10^{-2} \text{ min}^{-1}$  at 60 mg/l concentration of malachite green and 30°C. The values of  $K_{ad}$  show that rice husk activated carbon is a good adsorbent for removal of MG from aqueous solutions.

#### 3.1.2. Equilibrium Modeling

Equilibrium modeling shows how does the adsorption the process acquire equilibrium state. The Langmuir model assumes that uptake of MG molecules occurs on a homogeneous surface by monolayer adsorption. Selection of an isotherm equation depends on the nature and type of the system. Linear form of langmuir equation is as under [16,17]:

$$(C_e/q_e) = 1/Q^0b + C_e/Q^0 \quad (3)$$

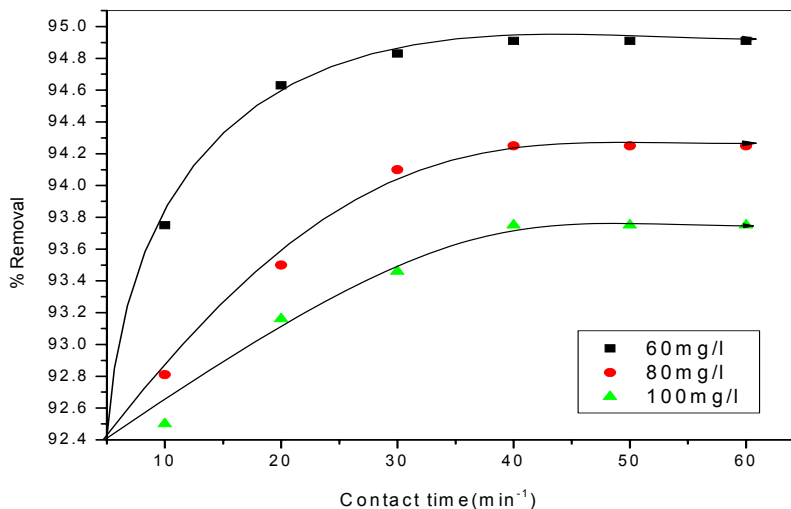


Fig. (2). Effect of initial concentration on percent removal of malachite green on RHAC.

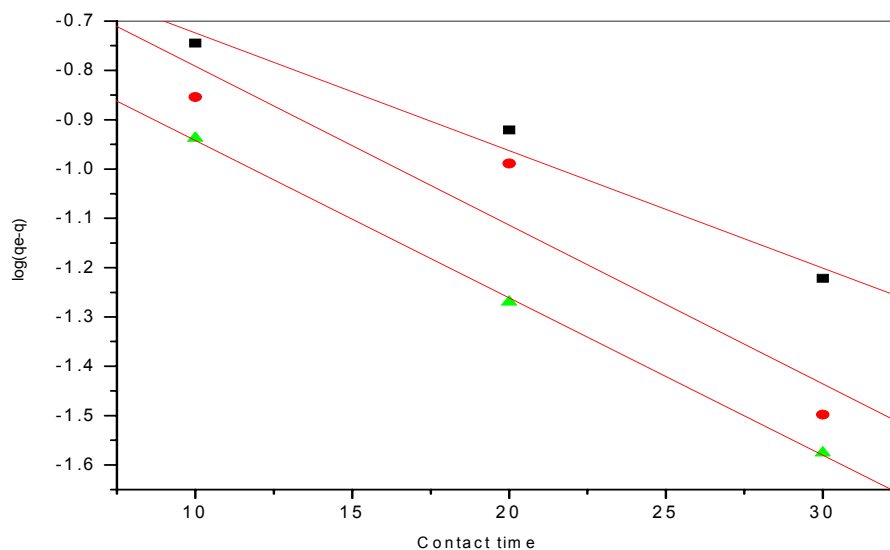


Fig. (3). Lagergren's plot for kinetic modeling of the adsorption process of malachite green on RHAC.

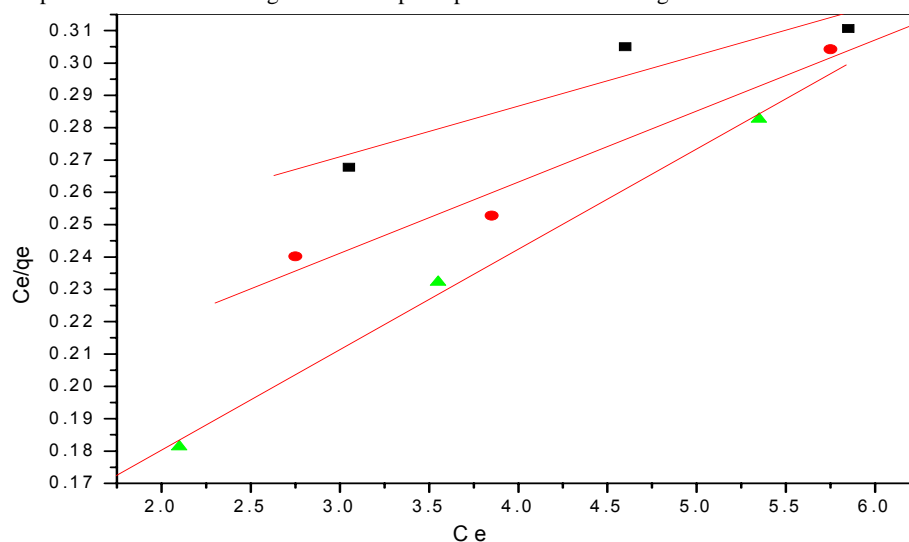


Fig. (4). Langmuir's isotherm plot for the adsorption of malachite green on RHAC.

Table 1. Values of Isotherm Constants at Different Temperature

Isotherms	Temperature(K)	Parameters	
		$Q^0(\text{mg/g})$	$b(\text{l/mg})$
Langmuir	303	63.85	285.05
	313	45.49	259.62
	323	32.21	272.43
Freundlich		$K_f(\text{L/g})$	$1/n$
	303	0.76	0.68
	313	0.67	0.77
	323	0.52	0.89

where  $C_e$  (mg/l) is the equilibrium concentration of the solute (mg/l),  $q_e$  is amount adsorbed at equilibrium (mg/g), and  $Q^0$  (mg/g) and  $b$  (l/mg) are constants related to the adsorption capacity and energy of adsorption, respectively. A plot of ' $C_e/q_e$  vs  $C_e$ ' (Fig. 4) gives a straight line. The values of  $Q^0$  and  $b$  were determined by the slopes and intercepts of Fig. (4) and are given in Table 1.

For Langmuir isotherm the essential characteristics can be expressed in terms of a dimensionless equilibrium parameter ( $R_L$ ) [18]:

$$R_L = 1/(1 + KC_0) \quad (4)$$

where  $K$  is the Langmuir constant (l/g) and  $C_0$  is the initial dye concentration (mg/l). The value of  $R_L$  indicates the type

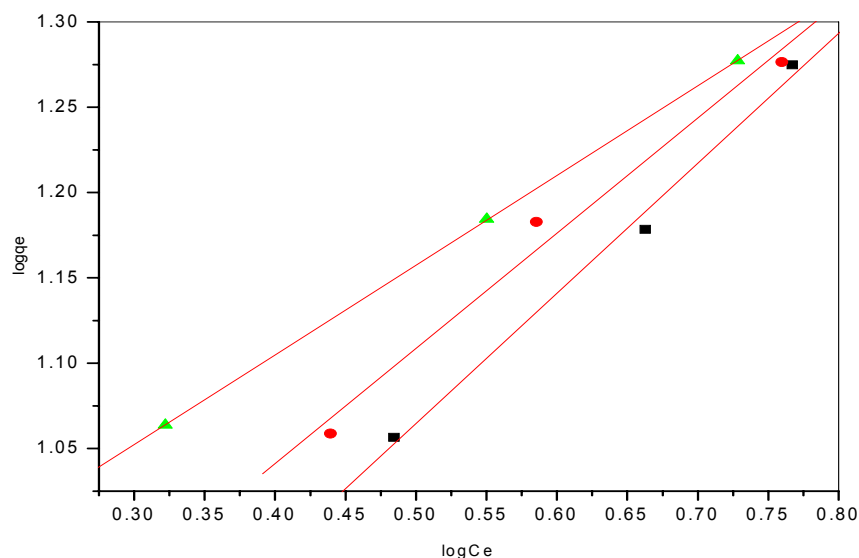


Fig. (5). Plot of Freundlich adsorption isotherms of malachite green on RHAC.

Table 2. Comparison of Adsorption Capacities of Different Adsorbents for Dye Removal

Adsorbent	( $q_m$ in $\text{mg g}^{-1}$ )	Reference
Coconut husk	99.00	[20]
Banana peel	21.0	[21]
Date pits	17.3	[22]
Rice husk	19.83	[23]
Wood sawdust	05.99	[24]
Orange peel	14.30	[21]
Sugarcane dust	04.88	[25]
Activated carbon	40.06	[26]
Rice husk	63.85	This work

of the isotherm to be either unfavourable, linear or favorable. If  $R_L > 1$ , it follows an unfavorable adsorption, a value 1.0 of  $R_L$  indicates a linear,  $R_L$  lesser than 1.0 a favourable and a value of  $R_L$  equal to zero suggests an irreversible adsorption.

Values of  $R_L$  at different temperature show favourable nature of adsorption for malachite green on rice husk activated carbon.

Freundlich isotherm data for the dyes on activated carbon of rice husk was fitted to the linear form of Freundlich isotherm [19]:

$$\log x/m = \log K_f + 1/n \log C_s \quad (5)$$

where  $x/m$  is the amount adsorbed per unit mass of the dye species,  $C_s$  the equilibrium concentration, and  $1/n$  and  $K_f$  are constants. The values of these constants were determined from the straight line plots of ' $\log x/m$  vs  $C_s$ ' (Fig. 5).  $K_f$  and  $n$ , were calculated from the slopes and intercepts of the graphs and their values are given in Table 1.

Table 2 gives a comparative account of the adsorption capacities of various adsorbents. It is clear from the table

that adsorption capacity of RHAC used in the present studies is significant viz.  $63.85 \text{ mg g}^{-1}$ . Except that from the active carbon prepared from coconut husk, the adsorption capacity displayed by activated carbon prepared and used in present studies displays higher capacity of adsorption for MG.

#### 4. CONCLUSION

Removal of MG by RHAC increased from 93.75 to 94.91% by decreasing the initial concentration dye from 100 to 60 mg/l. Time of equilibrium was found to be 40 min. The process of removal follows first order kinetics. Equilibrium studies were performed and the data fitted well in Langmuir and Freundlich adsorption isotherm equations. It can be concluded that the agro-waste rice husk which is available in plenty in India and other countries can be successfully used as an adsorbent also.

#### ACKNOWLEDGEMENTS

The authors are thankful to AICTE, Government of India, for providing financial assistance to Uma.

## REFERENCES

- [1] Aksu Z. Application of biosorption for the removal of organic pollutants: a review. *Process Biochem* 2005; 40: 997-1026.
- [2] Malik PK. Use of activated carbons prepared from sawdust and rice-husk for adsorption of acid dyes: a case study of acid yellow 36. *Dyes Pigments* 2003; 56: 239-49.
- [3] Robinson T, Chandran B, Nigam P. Removal of dyes from artificial textile dye effluent by two agricultural waste residues, corn cob and barley husk. *Environ Int* 2002; 28: 29-33.
- [4] Lee CK, Low KS, Gan PY. Removal of some organic dyes by acid treated spent bleaching earth. *Environ Technol* 1999; 20: 99-104.
- [5] Hu ZG, Zhang J, Chan WL, Szeto YS. The sorption of acid dye onto chitosan nanoparticles. *Polymer* 2006; 47: 5838-42.
- [6] Kumar A, Prasad B, Mishra IM. Adsorptive removal of acrylonitrile by commercial grade activated carbon: kinetics, equilibrium and thermodynamics. *J Hazard Mater* 2008; 152: 589-600.
- [7] Gurrath M, Kuretzky, Bochem THP, Okhlopkova LB, Lisitsyn AS, Likhovov VA. Palladium catalysts on activated carbon supports: influence of reduction temperature, origin of the support and pretreatments of the carbon surface. *Carbon* 2000; 38: 1241-5.
- [8] Walker GM, Weatherley LR. Textile wastewater treatment using granular activated carbon adsorption in fixed beds. *Sep Sci Technol* 2000; 35: 1329-41.
- [9] Kadirvelu K, Kavipriya M, Karthika C, Radhika M, Vennilamani N, Pattabhi S. Utilization of various agricultural wastes for activated carbon preparation and application for the removal of dyes and metal ions from aqueous solutions. *Bioresour Technol* 2003; 87:129-32.
- [10] Hameed BH, Mohd Din AT, Ahmad AL. Adsorption of methylene blue onto bamboo-based activated Carbon: kinetics and equilibrium studies. *J Hazard Mater* 2007; 141: 819-25.
- [11] Prakash KBG, Shivakamy K, Miranda LM, Velan M. Preparation of steam activated carbon from rubberwood sawdust (*Hevea brasiliensis*) and its adsorption kinetics. *J Hazard Mater* 2006; 136: 922-9.
- [12] Adinata D, Wan Daud WMA, Aroua MK. Preparation and characterization of activated carbon from palm shell by chemical activation with  $K_2CO_3$ . *Bioresour Technol* 2007; 98: 145-9.
- [13] Hameed BH, Hakimi H. Utilization of durian (*Durio zibethinus* Murray) peel as low cost sorbent for the removal of acid dye from aqueous solutions. *Biochem Eng J* 2008; 39: 338-43.
- [14] Bekc Z, Zveri i C O', Seki Y, Yurdakoc K. Sorption of malachite green on chitosan bead. *J Hazard Mater* 2008; 154: 254-61.
- [15] Langergren S, Svenska BK. Zur theorie der sogenannten adsorption gelöster stoffe. *Veternskapsakad Handlingar* 1898; 24 (4): 1-39.
- [16] Ravikumar K, Krishnan S, Ramalingam S, Balu K. Optimization of process variables by the application of response surface methodology for dye removal using a novel adsorbent. *Dyes Pigments* 2007; 72: 66.
- [17] Langmuir I. Constitution and fundamental properties of solids and liquids. I: solids. *J Hazard Mater* 2007; 139: 57-66.
- [18] Weber TW, Chakkravorti RK. Pore and solid diffusion models for fixed-bed adsorbents. *AIChE J* 1974; 20: 228.
- [19] Fytianos K, Voudrias E, Kokkalis E. Sorption-desorption behavior of 2,4-dichlorophenol by marine sediments. *Chemosphere* 2000; 40: 3-6.
- [20] low KS, Lee CK. The removal of cationic dyes using coconut husk as an adsorbent. *Pertanika* 1990; 13 (2): 221-8.
- [21] Annadurai G, Juang RS, Lee DJ. Use of cellulose-based wastes for adsorption of dyes from aqueous solutions. *J Hazard Mater* 2002; B92: 263-74.
- [22] Banat F, Al-Asheh S, Al-Makhadmeh L. Evaluation of the use of raw and activated date pits as potential adsorbents for dye containing waters. *Process Biochem* 2003; 39:193-202.
- [23] Kannan N, Sundaram MM. Kinetics and mechanism of removal of methylene blue by adsorption on various carbons—a comparative study. *Dyes Pigments* 2001; 51: 25-40.
- [24] Namasivayam C, Kumar DM, Selvi K, et al. Waste coir pith—a potential biomass for the treatment of dyeing waste waters. *Bio-mass Bioenergy* 2001; 21: 477-83.
- [25] Khattri SD, Singh MK. Colour removal from synthetic dye wastewater using a biosorbent. *Water Air Soil Pollut* 2000; 120: 283-94.
- [26] Sharma YC, Uma, Srivastava V, Srivastava J, Mahato M. Reclamation of Cr(VI) rich water and wastewater by wollastonite. *Chem Eng J* 2007; 127: 151-6.

Received: April 30, 2009

Revised: May 05, 2009

Accepted: May 11, 2009

© Sharma et al.; Licensee Bentham Open.

This is an open access article licensed under the terms of the Creative Commons Attribution Non-Commercial License (<http://creativecommons.org/licenses/by-nc/3.0/>) which permits unrestricted, non-commercial use, distribution and reproduction in any medium, provided the work is properly cited.