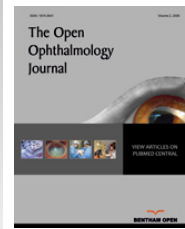




The Open Ophthalmology Journal

Content list available at: www.benthamopen.com/TOOPHTJ/

DOI: 10.2174/1874364101812010241, 2018, 12, 241



CORRIGENDUM

Simultaneous Accelerated Corneal Crosslinking and Laser *In situ* Keratomileusis for the Treatment of High Myopia in Asian Eyes

Jin Rong Low, Li Lim*, Jane Chwee Wah Koh, Daniel Kai Peng Chua and Mohamad Rosman

Singapore National Eye Centre, 11 Third Hospital Avenue, Singapore 168751, Singapore

Simultaneous Accelerated Corneal Crosslinking and Laser *In situ* Keratomileusis for the Treatment of High Myopia in Asian Eyes

The Open Ophthalmology Journal, 2018, 12: 143-153

The below mentioned values in Figure 2 have been removed.

Post-operative 6-12 months= 0.33,0.79 and 0.13

The below mentioned text has been added in Figure 5.

% of eyes within ± 0.5 D of attempted correction

© 2018 Low *et al.*

This is an open access article distributed under the terms of the Creative Commons Attribution 4.0 International Public License (CC-BY 4.0), a copy of which is available at: (<https://creativecommons.org/licenses/by/4.0/legalcode>). This license permits unrestricted use, distribution, and reproduction in any medium, provided the original author and source are credited.