



RESEARCH ARTICLE

Prognostic Significance Of Serum Urea Concentration at Admission in older patients with hip fracture

Alexander Fisher^{1,2,4,*}, Leon Fisher³, Wichat Srikusalanukul¹ and Paul N Smith^{2,4}

¹Department of Geriatric Medicine, The Canberra Hospital, ACT Health, Canberra, Australia

²Department of Orthopaedic Surgery, The Canberra Hospital, ACT Health, Canberra, Australia

³Frankston Hospital, Peninsula Health, Melbourne, Australia

⁴Australian National University Medical School, Canberra, ACT, Australia

Received: July 26, 2018

Revised: October 31, 2018

Accepted: November 09, 2018

Abstract:

Background:

There are unmet needs in objective prognostic indicators for Hip Fracture (HF) outcomes.

Objectives:

To evaluate the determinants and prognostic impact of elevated serum urea, a key factor of nitrogen homeostasis, in predicting hospital mortality, inflammatory complications and length of stay in HF patients.

Methods:

In 1819 patients (mean age 82.8±8.1 years; 76.4% women) with osteoporotic HF, serum urea level at admission along with 22 clinical and 35 laboratory variables were analysed and outcomes recorded. The results were validated in a cohort of 455 HF patients (age 82.1±8.0 years, 72.1% women).

Results:

Elevated serum urea levels (>7.5mmol/L) at admission were prevalent (44%), independently determined by chronic kidney disease, history of myocardial infarction, anaemia, hyperparathyroidism, advanced age and male gender, and significantly associated with higher mortality (9.4% vs. 3.3%, $p<0.001$), developing a high postoperative inflammatory response (HPIR, 22.1% vs.12.1%, $p=0.009$) and prolonged hospital stay (>20 days: 31.2% vs. 26.2%, $p=0.021$). The predictive value of urea was superior to other risk factors, most of which lost their discriminative ability when urea levels were normal. Patients with two abnormal parameters at admission, compared to subjects with the normal ones, had 3.6-5.6 -fold higher risk for hospital mortality, 2.7-7.8-fold increase in risk for HPIR and 1.3-1.7-fold higher risk for prolonged hospital stay. Patients with increased admission urea and a high inflammatory response had 9.7 times greater mortality odds compared to patients without such characteristics.

Conclusion:

In hip fracture patients admission serum urea is an independent and valuable predictor of hospital outcomes, in particular, mortality.

Keywords: Serum urea, Hip fracture, Hospital outcomes, Prognosis, Prediction, Mortality.

1. INTRODUCTION

In the last two decades, serum urea concentration, the terminal product of protein metabolism, received much

* Address correspondence to this author at the Department of Geriatric Medicine, The Canberra Hospital and ANU Medical School, PO Box 11, Woden, ACT 2606, Australia; Tel: +61-2-51243738, Fax: +61-2-51244036, Email: alex.fisher@act.gov.au.

attention as a simple and reliable biochemical parameter for predicting adverse outcomes, especially short- and long-term mortality, in various medical and surgical settings including cardiovascular, cerebrovascular, respiratory, liver, pancreatic, septic and critically ill patients [1 - 11]. Elevated urea has been shown to be an independent and a better prognostic indicator of mortality than the Glomerular Filtration Rate (GFR) and creatinine in patients with acute and chronic cardiovascular diseases [2, 5 - 7, 12, 13].

However, the value of urea for risk stratification of hospital outcomes in Hip Fracture (HF) patients has not been evaluated systematically. Reports on the prognostic significance of serum urea level in HF patients are limited, conflicting and focussed only on predicting mortality [14 - 18]. Moreover, although liver is the main ureagenic organ and routine hepatocyte function parameters (albumin levels, enzyme activities) have been found to be valuable prognostic indicators for poor outcomes in HF patients [19 - 22], no study was performed on the relationship between serum urea, liver function characteristics at admission and outcomes in HF.

The aims of this study were to assess in a representative sample of older HF patients (1) the prevalence and determinants of elevated serum urea level at admission, (2) its association with short-term outcomes, and (3) the potential prognostic impact alone and in combination with clinical and other biochemical characteristics, focussing on liver-specific and protein metabolism-related variables.

2. PATIENTS AND METHODS

2.1. Patients

This study is based on prospectively collected socio-demographic, clinical (comorbidities, complications, medication used, hospital outcomes) and laboratory data on consecutive patients with Hip Fracture (HF) admitted to the Department of Orthopaedic Surgery of the Canberra Hospital (university-affiliated 672-bed tertiary care center) from January 2000 to January 2013. Patients who had high trauma or subtrochanteric fracture as well as pathological HF due to primary or metastatic bone cancer, multiple myeloma, Paget disease or primary hyperparathyroidism, or who had incomplete data on admission were excluded. In total, 1819 older (≥ 60 years of age) patients (mean age 82.8 ± 8.1 years; 76.4% women; 94.6% Caucasian) with low-trauma osteoporotic HF were finally included in the study.

The study was approved by the Australian Capital Territory Health Human Research Ethical Committee and waived the requirement for written consent as only routinely collected and anonymized before analysis data were used.

2.2. Validation Dataset

A retrospective analysis of a second cohort included data (obtained from electronic medical and administrative records) from 455 consecutive older (≥ 60 years of age) patients (mean age 82.1 ± 8.0 years, 72.1% women) with osteoporotic HF who were treated at the Canberra Hospital between 2013 and 2015.

2.3. Laboratory Tests

In each patient, fasting venous blood samples were collected on admission and the following assays performed: urea and electrolytes, complete blood count, C-Reactive Protein (CRP), liver (Alanine aminotransferase [ALT], Gamma-Glutamyl Transferase [GGT], alkaline phosphatase [ALP], bilirubin and albumin) and thyroid (thyroid stimulating hormone [TSH], and free thyroxine [T4]) function tests, 25 (OH) vitamin D [(25(OH)D], intact parathyroid hormone (PTH) and indices of iron metabolism (iron, ferritin, transferrin, Transferrin Saturation [TSAT]) using standard methods and commercially available kits as we described previously [20]. In all patients, glomerular filtration rate (GFR, by standardized serum creatinine-based formula normalized to a body surface area of 1.73 m^2) was estimated. Chronic kidney disease (CKD, \geq stage 3) was defined as a $\text{GFR} < 60 \text{ mL/min/1.73 m}^2$. The cut-off level for elevated serum urea was set at $>7.5 \text{ mmol/L}$ (upper limit of normal range). The cut-offs selected by other researchers varied between 5 and 15.4 mmol/L , but in most studies were between 5 and 10.0 mmol/L [7, 18, 23 - 28], therefore, we also analysed the effects of $\text{urea} > 10.0 \text{ mmol/L}$. Deficiency of vitamin D was defined as $25(\text{OH})\text{D} < 25 \text{ nmol/l}$ and insufficiency as $25(\text{OH})\text{D} < 50 \text{ nmol/l}$. Hyperparathyroidism (SHPT) was defined as elevated serum PTH ($>6.8 \text{ pmol/l}$). In total, 22 clinical and 35 biochemical and haematological variables were analysed in relation to admission serum urea concentration and its prognostic and predictive value.

2.4. Outcomes

The main postoperative outcomes studied were: (1) in-hospital mortality, (2) complications associated with a High Postoperative Inflammatory Response (HPIR) defined as CRP>150mg/L after the 3rd postoperative day and (3) Length Of Stay (LOS).

2.5. Statistical Analyses

All continuous variables are expressed as mean \pm Standard Deviation (SD) and compared using analysis of variance; categorical parameters are presented as frequency (percentage) and compared by Chi-square and Fisher's exact tests. The associations between urea at admission with each other studied variable (continuous and categorical) and with hospital outcomes were assessed using Pearson's correlation coefficients (log-transformed variables), univariate and multivariate logistic regression models. Potential confounding variables (demographic, clinical and laboratory) with statistical significance ≤ 0.100 in the univariate analysis were included in multivariate models to identify independent factors associated with elevated admission urea and with hospital outcomes. Data are presented with 95% Confidence Intervals (CI). The final predicting models were developed by stepwise logistic regression. The Hosmer-Lemeshow goodness of fit test was used to assess model performance. To quantify the significance of multicollinearity phenomena in regression analyses the variance inflation factor was calculated.

The individual predictive abilities of urea levels, other laboratory and clinical parameters of interest were evaluated by the Receiver Operating Characteristic (ROC) analyses and the accuracy was expressed as area under curve (AUC); the sensitivity, specificity, positive predictive values (PPV), negative predictive values (NPV), accuracy, positive likelihood ratio (LR+), and negative likelihood ratio (LR-) were also calculated. Similarly, we assessed the predictive performances of any two eligible variables combined (pairs). Statistical significance was accepted at the $p < 0.05$ level (two-tailed). All statistical analyses were performed using the Stata software version 10 (StataCorp, College Station, TX, USA).

3. RESULTS

3.1. Clinical Characteristics of Patients With and Without Elevated Urea at Admission

The patients' socio-demographic, clinical and laboratory characteristics and short-term outcomes categorised by serum urea at admission are shown in Table 1. Urea levels were elevated in 800 (44.0%) HF patients, and in both genders, these patients were older (on average +2.6 years for females and +5.4 years for males); men were significantly younger than women, but the difference in mean age in the group with increased urea was 1.5 years vs. 5.3 years in the group with normal urea. Patients with elevated urea compared to those with normal urea levels were more likely to be admitted from a permanent Residential Care Facility (RCF), more commonly had a history of CKD, hypertension, Coronary Artery Disease (CAD), Myocardial Infarction (MI), anaemia and diabetes mellitus type 2 (DM), but were less likely to have previously a Cerebrovascular Accident (CVA), to be current smokers or alcohol over-users (>3 times per week). There was no significant difference between the two groups in terms of 7 other chronic comorbidities and lifestyle factors, including HF type and dementia. Among 35 laboratory parameters tested, 7 demonstrated statistical significance. Patients with elevated urea compared to those with normal urea, in addition to expected worse renal function (higher creatinine levels, lower GFR) had significantly higher levels of PTH, ALP and 25(OH)D and lower bilirubin concentrations (Table 1).

3.2. Determinants of Elevated Serum Urea Levels at Admission

Multivariate logistic regression analysis adjusting for all of the univariate clinical and laboratory variables associated with elevated serum urea on admission (with $p \leq 0.100$), as well as for HF type and pre-admission use of any diuretics (frusemide, thiazides, spironolactone), angiotensin-converting enzyme inhibitors and angiotensin 2-receptor blockers, revealed as significant and independent correlates of urea>7.5mmol/L the following six factors: CKD, history of MI, anaemia, hyperparathyroidism, advanced age and male gender (Table 2).

Table 1. Socio-demographic, clinical and laboratory characteristics and in-hospital outcomes in older hip fracture patients by serum urea levels on admission.

Variables	All patients (n=1819)	Urea>7.5 mmol/L (n=800)	Urea≤7.5 mmol/L (n=1019)	P Value
Age, years				
Females	83.4±7.7	84.9±7.3	82.3±7.9	<0.001
Males	80.6±9.0	83.4±7.2	78.0±9.7	<0.001
Both genders	82.8±8.1	84.5±7.3	81.4±8.5	<0.001
Age >75 years, n (%)	1511(83.1)	719(89.9)	792(77.7)	<0.001
Age >80 years, n (%)	1288(70.8)	629(78.6)	659(64.7)	<0.001
Males/Females, n	429/1390	206/594	223/796	0.054
From RCF, n (%)	636(35.0)	300(37.5)	336(33.0)	0.044
CKD, n (%)	789(43.4)	566(70.8)	223(21.9)	<0.001
CAD, n (%)	49(26.9)	261(32.6)	229(22.5)	<0.001
MI, n (%)	133(7.3)	84(10.5)	49(4.8)	<0.001
HT, n (%)	937(51.5)	451(56.4)	486(47.7)	<0.001
Anaemia:				
Hb<110g/L, n (%)	355(19.5)	194(24.3)	161(15.8)	<0.001
Hb<120g/L, n (%)	699(38.4)	370(46.3)	329(32.3)	<0.001
CVA, n (%)	219(12.0)	83(10.4)	136(13.3)	<0.053
DM, n (%)	175(9.6)	92(11.5)	83(8.1)	0.016
Smoker, n (%)	100(5.5)	33(4.1)	67(6.6)	0.024
Alcohol+, n (%)	92(5.1)	25(3.1)	68(6.6)	0.001
Urea, mmol/L	8.5±7.4	12.4±9.8	5.4±1.4	<0.001
Creatinine, µmol/L	92.9±60.0	119.0±80.3	72.3±20.5	<0.001
GFR, ml/min/1.73m ²	62.5±22.1	49.1±20.5	72.9±17.2	<0.001
PTH, pmol/L	8.5±7.4	10.4±9.1	7.1±5.3	<0.001
25(OH)D, mmol/L	48.3±28.8	50.3±29.2	46.7±28.4	0.016
ALP, IU/L	100.8±70.7	106.5±86.7	96.3±54.7	0.003
Bilirubin, µmol/L	12.4±8.1	11.7±6.8	12.9±8.9	0.003
Outcomes:				
LOS, days	19.0±22.3	20.5±25.7	17.8±19.2	0.011
LOS>20 days, %	28.4	31.2	26.2	0.021
HPIR, %	16.5	22.1	12.1	0.012
Died, %	6.0	9.4	3.3	<0.001

Abbreviations: RCF, residential care facility (permanent); CKD, chronic kidney disease (GFR<60 ml/min/1.73m²); CAD, coronary artery disease; MI, history of myocardial infarction; CVA, cerebrovascular accident; DM, diabetes mellitus type 2; Hb, haemoglobin; Alcohol+, alcohol over-user (≥3 drinks/week); GFR, glomerular filtration rate; PTH, parathyroid hormone; 25(OH)D, 25(OH) vitamin D; ALP, alkaline phosphatase; LOS, length of hospital stay; HPIR, high postoperative inflammatory response (C-reactive protein >150mg/L after the 3rd postoperative day).

Notes: Continuous data are expressed as mean ± SD and categorical data as number (%). Only statistically significant associations shown. There was no significant differences between patients with and without elevated serum urea on admission in prevalence of hip fracture type (cervical fracture: 51.0% vs. 55.2%, p=0.074), dementia (33.7% vs. 31.5%, p=0.335), chronic obstructive pulmonary disease (11.7% vs. 11.4%, p=0.900), transient cerebral ischaemic attack (7.8% vs. 7.9%, p=0.956), Parkinson's disease (4.9% vs. 4.7%, p=0.855), walking aids users (40.0% vs.36.1%, p=0.077) or ex- smokers (12.6 vs.13.2%, p=0.713). There were also no significant differences between the two groups with respect to mean values of albumin (36.9 vs. 36.8g/L, p=0.921), alanine aminotransferase (ALT, 23.6 vs.25.9IU/L, p=0.471), gamma-glutamyl transferase (GGT, 55.8 vs. 57.8 IU/L, p=0.696), GGT/ALT ratio (2.9 vs.2.9, p=0.970), transferrin saturation (10.9 vs. 10.9%, p=0.948) and CRP (99.8 vs. 89.2mg/L, p=0.338).

3.2. Correlations of Urea, Clinical and Other Laboratory Parameters with Outcomes (Pearson Correlation Coefficients)

In Pearson correlation analysis, urea as a log-transformed continuous variable showed stronger correlation with in-hospital death ($r=0.181$, $p<0.001$) than log-GFR ($r=-0.174$, $p<0.001$), log-creatinine ($r=0.169$, $p<0.001$), log-PTH ($r=0.145$, $p<0.001$), log-albumin ($r=-0.073$, $p=0.002$), log-25(OH)D ($r=-0.049$, $p=0.041$) and log-age ($r=0.081$, $p<0.001$). Log-urea did not correlate with HPIR ($r=0.090$, $p=0.092$) and LOS >20 days ($r=0.038$, $p=0.106$), while log-creatinine ($r=0.128$, $p=0.017$; $r=0.071$, $p=0.003$, respectively) and log-25(OH)D ($r=0.118$, $p=0.031$; $r=-0.077$, $p=0.001$, respectively) did. However, pairwise comparisons among all abovementioned variables showed, as would be expected,

that log-urea significantly correlated with log-creatinine ($r=0.634$, $p<0.001$), log-GFR ($r=-0.621$, $p<0.001$), log-PTH ($r=0.277$, $p<0.001$), log-haemoglobin ($r=-0.125$, $p<0.001$), log-25(OH)D ($r=0.049$, $p=0.043$) and log-age ($r=0.254$, $p<0.001$), but not with log-albumin ($r=-0.016$, $p=0.488$) or log-GGT/ALT ratio ($r=0.022$, $p=0.349$). All described associations were significant in both males and females when checked separately.

Table 2. Independent and significant correlates of elevated serum urea (>7.5 mmol/L) on admission in older patients with hip fracture.

Variables	OR	95%CI	P value
CKD	7.08	5.61-8.94	<0.001
History of MI	2.25	1.46-3.48	<0.001
PTH>6.8 pmol/L	1.69	1.35-2.12	<0.001
Anaemia (Hb<120g/L)	1.45	1.15-1.83	0.002
Gender (male)	1.63	1.25-2.14	<0.001
Age (year)	1.02	1.00-1.03	0.040

Abbreviations: CKD, chronic kidney disease (GFR<60 ml/min/1.73m²); MI, myocardial infarction; PTH, parathyroid hormone; Hb, haemoglobin; OR, odds ratio; CI, confidence interval.

Notes: The multivariate logistic regression model included all variables with $p\leq 0.100$ on univariate analysis as well as hip fracture type (cervical, trochanteric) and pre-admission use of any diuretics (frusemide, thiazides, spironolactone), angiotensin-converting enzyme inhibitors and angiotensin 2-receptor blockers.

When we analysed the data as categorical variables, among all clinical and laboratory variables tested, urea >7.5mmol/L demonstrated the third highest Pearson's correlation coefficient with mortality ($r=0.126$, $p<0.001$) comparable to that of creatinine>90 μ mol/L ($r=0.131$, $p<0.001$) and GFR<60ml/min/1.73m² ($r=0.129$, $p<0.001$), and higher than all other parameters, including PTH>6.8pmol/L($r=0.108$, $p<0.001$), 25(OH)D<25nmol/L ($r=0.076$, $p=0.002$), albumin <33g/L ($r=0.065$, $p=0.006$), GGT/ALT>2.5 ($r=0.060$, $p=0.012$), haemoglobin<110g/L ($r=0.057$, $p<0.015$), history of MI ($r=0.088$, $p<0.001$), COPD ($r=0.068$, $p=0.004$), male gender ($r=0.045$, $p=0.053$), and age>75 years ($r=0.058$, $p=0.014$). Urea >7.5mmol/L and creatinine>90 μ mol/L were the only two parameters which correlated significantly with each of the three studied outcomes; in addition to in-hospital death, both elevated urea and creatinine were associated with HPIR ($r=0.133$, $p=0.012$; $r=0.162$, $p=0.002$, respectively) and LOS>20days ($r=0.054$, $p=0.021$; $r=0.082$, $p=0.001$, respectively). Other parameters associated with HPIR were anaemia (haemoglobin<110g/L, $r=0.140$, $p<0.009$) and 25(OH)D<25nmol/L ($r=-0.121$, $p=0.026$), whereas LOS>20days correlated with CKD ($r=0.065$, $p=0.006$), PTH>6.8pmol/L ($r=0.050$, $p=0.039$) and albumin<33g/L ($r=0.049$, $p=0.037$). The analysis showed also a significant interaction between in-hospital death and HPIR ($r=0.166$, $p=0.002$), but not between mortality and LOS or between HPIR and LOS.

3.3. Urea and Hospital Outcomes (Regression Multivariate Analyses)

Admission urea as a continuous variable (adjusted for age and gender) was significantly associated with in-hospital mortality: for each mmol/L increment in urea concentration the risk of a fatal outcome increased by 3.3% (OR 1.033; 95%CI 1.016-1.050; $p<0.001$). Other laboratory parameters (as continuous variables adjusted for age and gender) significantly associated with mortality were albumin (OR 0.948; 95%CI 0.917-0.98; $p=0.002$), GFR (OR 0.970; 95%CI 0.961-0.980; $p<0.001$), GGT/ALT ratio (OR 1.049; 95%CI 1.017-1.082; $p=0.002$), creatinine (OR 1.005; 95%CI 1.003-1.007; $p<0.001$) and ALT (OR 1.002; 95%CI 1.000-1.004; $p=0.042$). None of these biochemical variables was significantly associated with HPIR, but admission concentrations of albumin (OR 0.978; 95%CI 0.961—0.996; $p<0.015$) and creatinine (OR 1.002; 95%CI 1.000-1.004; $p<0.021$) were indicative for LOS>20 days.

Serum urea on admission >7.5mmol/L was found in 76(69.7%) of 109 non-survivors [in 51(46.8%) of them urea was >10mmol/L], in 177(59.0%) of 300 patients with a HPIR and in 254 (49.1%) of 517 patients with LOS>20 days. In comparison to individuals with normal urea, patients with urea above 7.5mmol/L evidenced adverse in-hospital outcomes (Tables 1 and 3): significantly higher mortality rates (9.4% vs. 3.3%, OR 2.60, $p<0.001$), higher incidence of HPIR (22.1% vs.12.1%, OR 2.21, $p=0.009$), prolonged hospital stay (+2.7 days, $p=0.011$) and a higher proportion of long-stayers (>20 days: 31.2% vs. 26.2%, $p=0.021$, OR 1.20, $p=0.087$); all presented ORs were adjusted for age and gender. Analysis of the urea/albumin ratio>5.5(median) showed that this parameter was no better than urea>7.5mmol/L for predicting risks of mortality (OR 2.64, 95%CI 1.69-4.14, $p<0.001$) or HPIR (OR 1.96, 95%CI 1.09-3.54, $p=0.025$).

Table 3. Risk of in-hospital death and developing a high postoperative inflammatory response (HPIR) in older patient with hip fracture by the level of urea at admission.

Model	Urea 7.5 -10.0 mmol/L (n=410)			Urea >10.0 mmol/L (n=390)			Urea >7.5 mmol/L (n=800)		
	OR	95%CI	P value	OR	95%CI	P value	OR	95%CI	P value
In-hospital mortality									
1	1.82	1.07-3.10	0.028	4.41	2.80-6.96	<0.001	3.00	1.98-4.54	<0.001
2	1.62	1.02-2.78	0.049	3.70	2.31-5.91	<0.001	2.60	1.70-3.98	<0.001
3	1.52	0.91-2.87	0.102	1.96	1.03-3.73	0.041	1.82	1.07-3.10	0.027
4	4.09	1.05-22.43	0.05	6.62	1.32-33.16	0.021	3.10	1.03-10.16	0.044
High postoperative inflammatory response (HPIR)									
1	1.82	1.02-3.61	0.046	2.17	1.06-4.43	0.034	2.05	1.16-3.64	0.014
2	2.17	1.06-4.43	0.034	1.91	1.02-3.90	0.04	2.21	1.21-4.01	0.009
3	2.15	0.99-4.73	0.052	2.12	1.02-3.02	0.041	2.18	1.07-4.42	0.031

Abbreviations: OR, odds ratio; CI, confidence interval.

Notes: Patients with admission urea <7mmol/L (n=1019) was the reference group (OR 1.0). Model 1, unadjusted analysis; Model 2, adjustment for age and gender; Model 3, adjustment for all admission variables with p≤0.010 on univariate analysis; Model 4, adjustment as in Model 3 and for HPIR (with CRP>150mg/L).

After further adjustments for potential confounders known to be associated with poor outcomes (all variables with p value≤0.100 on univariate analysis) including history of CKD, MI, DM, COPD, anaemia, albumin<33g/L, GGT/ALT>2.5, PTH>6.8pmol/L and 25(OH)D<25nmol/L, the significant relationships remained between admission urea >7.5mmol/L and hospital mortality (OR 1.82, p=0.027) as well as with HPIR (OR 2.18, p=0.031); in a fully adjusted model elevated urea failed to identify patients with LOS>20 days (Table 3). In the multivariate analysis, in addition to elevated urea, independent predictors of mortality included history of MI (OR 2.35, 95%CI 1.26-4.38, p=0.007), COPD (OR 2.16, 95%CI 1.24-3.74, p=0.006), albumin<33g/L (OR 2.08, 95%CI 1.28-3.35, p=0.003), 25(OH)D<25nmol/L (OR 1.99, 95%CI 1.26-3.14, p=0.003), CKD (OR 1.80, 95%CI 1.06-3.07, p=0.030), PTH>6.8pmol/L (OR 1.79, 95%CI 1.10-2.91, p=0.019) and GGT/ALT>2.5 (OR 1.64, 95%CI 1.05-2.55, p=0.029); the Hosmer–Lemeshow goodness of-fit test indicated good calibration of the model (p=0.853). Independent predictors of HPIR, in addition to elevated urea, were COPD (OR 2.62, 95%CI 1.18-5.84, p=0.018), 25(OH)D<25nmol/L (OR 2.50, 95% 1.09-5.56, p=0.032) and GGT/ALT>2.5 (OR 1.88, 95%CI 1.01-3.50, p=0.047); goodness of-fit test p=0.7258. Independent predictors of LOS>20 days were COPD (OR 1.46, 95%CI 1.01-2.12, p=0.043), albumin<33g/L (OR 1.32, 95%CI 1.01-1.72, p=0.041) and age (OR 1.02, 95%CI 1.00-1.04, p=0.024), but not elevated urea; goodness of-fit test p=0.3996.

We also evaluated in multivariate logistic models (all preoperative parameters with p<0.100 on univariate analysis included) predictors of poor outcomes in the subgroup of patients with admission urea >7.5mmol/L. Independent factors for a fatal outcome in this group were PTH>6.8pmol/L (OR 2.53, 95%CI 1.36-4.69, p=0.003), history of MI (OR 2.47, 95%CI 1.25-4.88, p=0.009) and albumin<33 g/L (OR 2.30, 95%CI 1.29-4.07, p=0.005); the model explained 19.7% of the total variance (R²) in mortality. As independent predictors for HPIR were identified COPD (OR 4.96, 95%CI 1.38-17.81, p=0.014) and anaemia (haemoglobin<110g/L, OR 3.32, 95%CI 1.28-8.63, p=0.014); R²=17.4%. In patients with elevated urea at admission who developed a HPIR the mortality risk increased by 4.6 fold (OR 4.56, 95%CI 1.59-13.07, p=0.005). LOS>20 days was predicted by on admission low transferrin saturation (TSAT<18%, OR 1.72, 95%CI 1.23-2.39, p=0.001), vitamin D insufficiency (25(OH)D<50nmol/L, OR 1.32, 95%CI 1.03-1.70, p=0.027) and advanced age (OR 1.04, 95%CI 1.02-1.05, p<0.001); R²=5.3%. The persistence of main independent risk factors for hospital outcomes in the total cohort and in patients with raised urea indicates the consistency of our models.

To better characterize the association between preoperative urea levels and postoperative outcomes, patients were categorized into 3 subgroups (Table 3): with normal (<7.5mmol/L, n=1019[56.0%]), moderately increased (7.5 - 10.0mmol/L, n=410 [22.5%]) and high urea levels (>10.0mmol/L, n=390 [21.4%]). In the 3 subgroups, the postoperative mortality rates were 3.3%, 5.8% (OR 1.82, p=0.028), and 13.1% (OR 4.41, p < 0.001), respectively, HPIR developed in 12.6%, 20.7% (OR 1.82, p=0.046), and 21.5% (OR 2.17, p =0.034) of patients, respectively, and LOS>20 days had 26.1%, 30.1% (OR 1.22, p= 0.120), and 32.4% (OR 1.36, p = 0.019), respectively. After adjustments for age and gender, compared to patients with normal admission urea, the risk of a fatal outcome in patients with urea between 7.5 and 10.0mmol/L was 1.6 times higher, and in subjects with urea>10mmol/L was 3.7 times higher being 2.3 times higher than in patients with urea 7.5-10mmol/L (OR 2.34, p=0.001). After further adjustments for all abovementioned

confounders, the risk of hospital death for patients with urea 7.5-10 mmol/L was 1.5 times higher ($p=0.102$) and in subjects with urea >10 mmol/L was 2-times higher ($p<0.041$). Serum urea levels were also significantly associated with the risk of HPIR (the ORs were 2.2 in both groups with urea 7.5 -10mmol/L and >10.0 mmol/L). Prolonged hospital stay was associated with admission urea >10 mmol/L (OR 1.36, 95%CI 1.05-1.75, $p=0.019$), but this relationship lost statistical significance after adjustment for age and gender ($p=0.087$). When the fully adjusted models included also HPIR, the risk of hospital death was 4.1 and 6.6 times higher in patients with admission urea 7.5-10mmol/L and >10 mmol/L, respectively (Table 3).

Taken together, the presented data indicate that in older patients with HF even mildly-moderately elevated serum urea at admission is independently and strongly associated with poor outcomes, in particular with in-hospital death and developing a HPIR.

3.4. Predictive Efficacy/Accuracy of Elevated Admission Urea Levels (Single and Combined With Other Variables)

Next we performed ROC analysis (adjusting for age and gender) for elevated admission urea concentration and compared it to abnormal creatinine, GFR, PTH, and albumin levels, GGT/ALT and urea/albumin ratios. For predicting a fatal outcome, urea >10.0 mmol/L yielded the best results (the largest AUC value of 0.7252, 95%CI 0.6696-0.7807); the AUC's for urea >7.5 mmol/L (0.6792, 95%CI 0.6302-0.7283) and for urea/albumin >5.5 (0.6762) were slightly lower and comparable to those for creatinine >90 μ mol/L (0.6823) and GFR <60 ml/min/1.73m² (0.6813), but higher than those for three other on-admission indices (all AUCs <0.6570). The sensitivity, specificity, positive predictive value (PPV), negative predicting value (NPV), accuracy, positive likelihood ratio (LR+) and negative likelihood ratio (LR-) were 13.1%, 96.7%, 73.3%, 60.7%, 74.1%, 3.97 and 0.90 at urea >10 mmol/L; the corresponding values for admission urea >7.5 mmol/L were 9.3%, 96.7%, 57.4%, 69.7%, 56.6%, 2.82 and 0.94%. For predicting HPIR, the best results showed creatinine >90 μ mol/L (AUC 0.6263) followed by elevated urea (AUC 0.6062). For predicting LOS >20 days, the tested variables demonstrated low discrimination ability (all AUC <0.5648) and elevated urea levels did not reach statistical significance. The level of serum urea 7.5-10.0mmol/L, predicted hospital mortality with 69.5% accuracy and HPIR with 67.4% accuracy, whereas the admission urea >10 mmol/L showed an accuracy of 73.3% and 68.1%, respectively.

These results indicated an acceptable AUC value to predict fatal outcome when admission urea >10 mmol/L, but the discriminatory performance of other individual parameters [despite being independent and significant prognostic indicators] was low. Therefore, we evaluated in logistic regression models (adjustment for age and gender) whether an approach combining two biomarkers can improve the accuracies of predictions for poor outcomes (Tables 4 and 5; Fig. 1). Patients with two abnormal parameters at admission, compared to subjects with the normal ones, had 2.9-5.6 -fold higher risk for hospital mortality, 2.6-7.8-fold increase in risk for HPIR and 1.3-1.7-fold higher risk for prolong LOS (Table 4). The mortality rate in patients with both urea and albumin admission levels in the normal ranges was 2.9%, in subjects with only urea >7.5 mmol/L - 8.1%, in subjects with only albumin <33 g/L - 4.6% and in individuals with both abnormalities - 14.6%.

Admission urea >7.5 mmol/L remained a significant indicator of in-hospital mortality even when all other tested clinical and laboratory parameters, except PTH, were normal; the discriminative significance of elevated urea was borderline when accompanied with GFR above 60ml/min/1 ($p=0.062$). In patients with normal urea at admission all studied clinical and laboratory variables, except CKD, were not relevant in predicting mortality (Table 4). In patients with increased both urea and PTH the mortality risk was 4.5 times higher comparing to patients with these two markers in the normal range, but neither elevated urea, nor high PTH separately were statistically significant indicators for a fatal outcome if the other variable was normal suggesting that the effects of increased urea and PTH on mortality risk are not independent, but co-determined by some metabolic mediators.

Similarly, admission urea >7.5 mmol/L was indicative for HPIR when other studied parameters were normal [borderline significance when accompanied by anaemia with haemoglobin >110 g/L ($p=0.072$) or creatinine ≤ 90 μ mol/L ($p=0.099$)], whereas in patients with normal urea, COPD, anaemia, hyperparathyroidism and GGT/ALT >2.5 failed as prognostic indicators for HPIR. Combination of elevated urea and low albumin on admission did not achieve statistical significance as an indicator for HPIR (OR 2.2, $p=0.159$) suggesting opposite roles of these metabolic alterations in developing HPIR.

Table 4. Prognostic value of combined indices in older hip fracture patients.

Variables: Urea>7.5 mmol/L plus	Group 1 (Both variables abnormal)			Group 2 (Only urea >7.5mmol/L)			Group 3 (Only the second variable abnormal)		
	OR	95%CI	P value	OR	95%CI	P value	OR	95%CI	P value
In-hospital mortality									
+MI	5.59	2.82-11.09	<0.001	2.52	1.59-3.98	<0.001	2.53	0.85-7.54	0.095
+Albumin<33g/L	4.97	2.71-9.12	<0.001	2.56	1.54-4.27	<0.001	1.61	0.75-3.45	0.217
+GGT/ALT>2.5	4.65	2.51-8.60	<0.001	3.01	1.68-5.39	<0.001	1.95	0.96-3.96	0.066
+PTH>6.8pmol/L	4.46	2.44-8.12	<0.001	1.74	0.82-3.66	0.148	1.53	0.74-3.18	0.255
+CKD	3.86	2.29-6.51	<0.001	1.97	0.97-4.02	0.062	2.11	1.02-4.33	0.043
+Hb<110g/L	3.74	2.10-6.64	<0.001	2.31	1.42-3.74	<0.001	1.09	0.44-2.69	0.845
+Creatinine >90µmol/L	3.55	2.17-5.82	<0.001	2.02	1.10-3.72	0.023	1.93	0.85-4.39	0.115
+Hb<120g/L	2.88	1.65-5.00	<0.001	2.52	1.46-4.37	0.001	1.10	0.53-2.26	0.795
+HPIR	9.68	3.14-29.83	<0.001	2.89	1.04-8.01	0.041	1.31	0.15-11.43	0.809
High postoperative inflammatory response (HPIR)									
+COPD	7.76	2.54-23.70	<0.001	2.07	1.06-4.04	0.032	1.74	0.58-5.23	0.323
+Hb<110g/L	4.59	1.96-10.76	<0.001	1.89	0.94-3.77	0.072	1.75	0.59-5.16	0.312
+Hb<120g/L	3.98	1.76-9.00	0.001	2.57	1.15-5.75	0.022	2.75	1.14-6.65	0.025
+GGT/ALT>2.5	3.73	1.57-8.88	0.003	2.40	1.08-5.34	0.032	1.86	0.78-4.40	0.161
+Creatinine >90µmol/L	3.48	1.66-7.34	0.001	2.01	0.88-4.60	0.099	2.78	1.03-7.50	0.044
++CKD	2.66	1.27-5.55	0.009	2.75	1.13-6.71	0.026	1.96	0.76-5.08	0.039
+PTH>6.8pmol/L	2.62	1.15-5.94	0.022	2.82	1.18-7.08	0.027	1.35	0.55-3.33	0.510
Length of hospital stay>20 days									
+25(OH)D<50nmol/L	1.72	1.25-2.36	0.001	1.25	0.88-1.77	0.215	1.45	1.07-1.97	0.016
+Albumin<33g/L	1.47	1.02-2.11	0.041	1.24	0.98-1.58	0.076	1.41	1.02-1.96	0.039
2+ Creatinine >90µmol/L	1.39	1.08- 1.79	0.010	1.13	0.84-1.51	0.408	1.56	1.05-2.32	0.027
+ CKD	1.31	1.03-1.68	0.030	1.05	0.76-1.47	0.755	1.11	0.79-1.56	0.541

Abbreviations:OR, odds ratio; CI, confidence interval; GFR, glomerular filtration rate; MI, history of myocardial infarction; COPD, chronic obstructive pulmonary disease; GGT, gamma-glutamyl transferase; ALT, alanine aminotransferase; PTH, parathyroid hormone; Hb, haemoglobin; CKD, chronic kidney disease (glomerular filtration rate<60ml/min/1.73m²); 25(OH)D, 25-hydroxyvitamin D.

Notes: Comparison with patients in whom both variables were in the normal range. All data adjusted for age and gender. Group 1- both variables abnormal; Group 2- only urea>7.5mmol/L, the other variable normal; Group 3- urea normal (<7.5mmol/L) but the other variable abnormal. Only statistically significant data for combined two abnormal indices (group 1) are presented.

The impact of elevated urea combined with other parameters for prognostication LOS>20 days was minimal. The combination of increased urea and vitamin D insufficiency yielded the highest OR (1.72, p<0.001), which was only a little improvement comparable to that of vitamin D insufficiency and normal urea (OR 1.45, p=0.016); likewise, urea combined with hypoalbuminaemia demonstrated ORs of 1.47 and 1.41, respectively (Table 4).

Next, we characterized the association between mortality and HPIR. Compared to patients with normal admission urea, the risk of hospital death in patients with elevated urea who did not developed HPIR was 2.9 times higher (OR 2.89, p<0.041) and 9.7 times higher in patients who experienced both conditions (OR 9.68, p<0.001), but in subjects with normal urea levels at admission HPIR was not predictive for a fatal outcome (OR 1.3, p<0.809) (Table 4). Of note, some combinations have more than an additive effect on outcomes. It appears that co-occurrence of raised urea with history of MI or low albumin or GGT/ALT>2.5 and, especially, with HPIR has synergistic effect on mortality, whereas presence of COPD together with elevated urea demonstrates a synergistic effect on HPIR.

ROC-analyses of hospital death occurrence with each pair of on-admission variables showed that this outcome is best predicted by combination of urea>7.5mmol/L with albumin<33g/L (AUC 0.7731), or with GGT/ALT>2.5 (AUC 0.7698), followed by combination of elevated urea with anaemia (AUC 0.7190) or PTH>6.8pmol/L (AUC 0.7132) or history of MI (AUC 0.7093) or CKD (AUC 0.7079) or creatinine >90µmol/L (AUC 0.7045). Among admission parameters, the highest sensitivity demonstrated the combination of elevated urea with hyperparathyroidism (77.9%) or CKD (74.7%), and the highest specificity showed the combination of urea with history of MI (93.1%) or with hypoalbuminaemia (84.7%) or with anaemia (83.1%). The high NPV (≥95.0%) of all combined characteristics indicate that the number of false positive tests is low. Presence of any two abovementioned characteristics on admission would miss a fatal outcome in 2.5-5.3% of patients with a negative result.

The highest predictive value for HPIR showed the combinations of urea>7.5mmol/L with anaemia (haemoglobin<120g/L, AUC 0.6928) or with creatinine >90µmol/L (AUC 0.6561) or with GGT/ALT>2.5 (AUC 0.6418), indicating a modest-low ability of these combinations to predict HPIR. None of the studied combinations showed a satisfactory predictive value for prolonged LOS (all AUCs under 0.5929).

Elevated urea at admission and HPIR demonstrated the highest discrimination power of predicting a fatal outcome (AUC 0.8176) and the latter result did not differ significantly from that of the full model (8 independent variables at admission and HPIR, AUC 0.8249, 95%CI 0.7442-0.9056, p<0.001) (Table 5, Fig 1).

Table 5. Prognostic accuracy of a combined two factor approach in predicting outcomes in older hip fracture patients.

Variables: Urea>7.5 mmol/L plus	AUC	95%CI	Se,%	Sp,%	PPV.%	NPV,%	Ac,%	P value
In-hospital mortality								
+Albumin<33g/L	0.7731	0.7072-0.8390	51.1	84.7	14.6	97.1	83.0	<0.001
+GGT/ALT>2.5	0.7698	0.7059-0.8337	64.6	74.3	11.8	97.5	73.8	<0.001
+25(OH)D<25nmol/L	0.7258	0.6325-0.8190	59.5	81.4	12.2	97.9	80.5	<0.001
+Hb<120g/L	0.7190	0.6588-0.7793	50.7	66.8	10.3	94.7	65.6	0.002
+Hb<110g/L	0.7180	0.6456-0.7904	47.2	83.1	12.9	96.7	81.3	<0.001
+PTH>6.8pmol/L	0.7132	0.6569-0.7695	77.9	58.8	11.9	97.4	60.0	<0.001
+MI	0.7093	0.6274-0.7913	31.8	93.1	16.7	96.9	90.5	<0.001
+CKD	0.7079	0.6539-0.7620	74.7	60.6	11.0	97.4	61.4	<0.001
+Creatinine >90µmol/L	0.7045	0.6492-0.7598	68.3	66.6	11.5	97.1	66.7	<0.001
+HPIR	0.8176	0.7008-0.9275	62.5	87.5	29.4	96.6	85.6	<0.001
High postoperative inflammatory response (HPIR)								
+Hb<120g/L	0.6928	0.5888-0.7968	58.1	71.8	26.1	90.9	69.8	0.001
+Creatinine >90µmol/L	0.6561	0.5695-0.7428	57.5	68.9	25.3	89.9	67.2	0.001
+GGT/ALT>2.5	0.6418	0.5268-0.7567	55.6	73.5	27.3	90.2	70.8	0.003
+COPD	0.6389	0.5161-0.7617	29.6	94.3	47.1	88.8	84.9	<0.001
+Hb<110g/L	0.6353	0.5190-0.7516	40.6	85.8	34.2	88.8	78.8	<0.001
+CKD	0.6250	0.5348-0.7152	60.0	60.2	21.4	89.3	60.2	0.018
Length of hospital stay>20 days								
+25(OH)D<50nmol/L	0.5928	0.5500-0.6355	64.6	49.6	34.3	77.5	53.9	<0.001
+Creatinine >90µmol/L	0.5686	0.5349-0.6022	42.1	67.2	33.2	75.0	60.2	0.001
+CKD	0.5683	0.5348-0.6018	47.8	61.0	32.9	74.5	57.2	0.003
+Albumin<33g/L	0.5544	0.5254-0.5834	21.8	84.8	34.0	75.1	68.1	0.017

Abbreviations: OR, odds ratio; CI, confidence interval; AUC, area under the receiver operating characteristic curve; Se, sensitivity; Sp, specificity; PPV, positive predictive value; NPV, negative predictive value; Ac, accuracy; MI, history of myocardial infarction; COPD, chronic obstructive pulmonary disease; CKD, chronic kidney disease (glomerular filtration rate <60ml/min/1.73m²); Hb, haemoglobin; 25(OH)D, 25-hydroxyvitamin D; PTH, parathyroid hormone.

Notes: All data adjusted for age and gender. Only variables significantly associated with outcomes shown.

Taken together, these results show that the discriminatory performance of elevated urea (alone and combined with other markers) differs for different outcomes and can be used for predicting unfavorable survival outcome and developing HPIR, but not for predicting prolonged LOS.

3.5. Validation

The validation and main cohorts were comparable in mean age, gender distribution, comorbidities, fracture types and outcomes. In the validation cohort, 23(5.1%) of 455 patients died in the hospital, 99 (21.7%) developed HPIR and 93(20.4%) had LOS>20 days. Admission urea>7.5mmol/L (after adjustment for age and gender) was predictive for in-hospital death: OR 3.60, 95%CI 1.45-8.90, p=0.006; AUC 0.7739, 95%CI 0.7045-0.8433; mortality rate: observed 10.3%, predicted 9.4%. Similarly, urea>10.0mmol/L was indicative for a fatal outcome: OR 3.10, 95%CI 1.20-8.03, p=0.020; AUC 0.7179, 95%CI 0.6291-0.8067; mortality rate: observed 11.9%, predicted 13.1%. Among subjects with urea>7.5mmol/L, the observed/predicted proportions of patients who developed HPIR were 23.8%/22.1% and the proportions of individuals with LOS>20 days were 29.0%/31.1%, respectively. Analyses of the prognostic performance of two combined parameters showed also comparable results in the validation and main cohorts. Urea>7.5mmol/L combined with albumin<33g/L yielded an observed/predicted mortality rate of 12.7%/14.4%, combined with

GGT/ALT>2.5-15.8%/11.8%, combined with creatinine>90 μ mol/L-11.3%/11.5%, and combined with PTH>6.8pmol/L-11.8%/11.9%, respectively. These results indicate that the proportion of observed poor outcomes in the validation cohort matched the proportion predicted by elevated urea levels alone and/or in combination with other parameters.

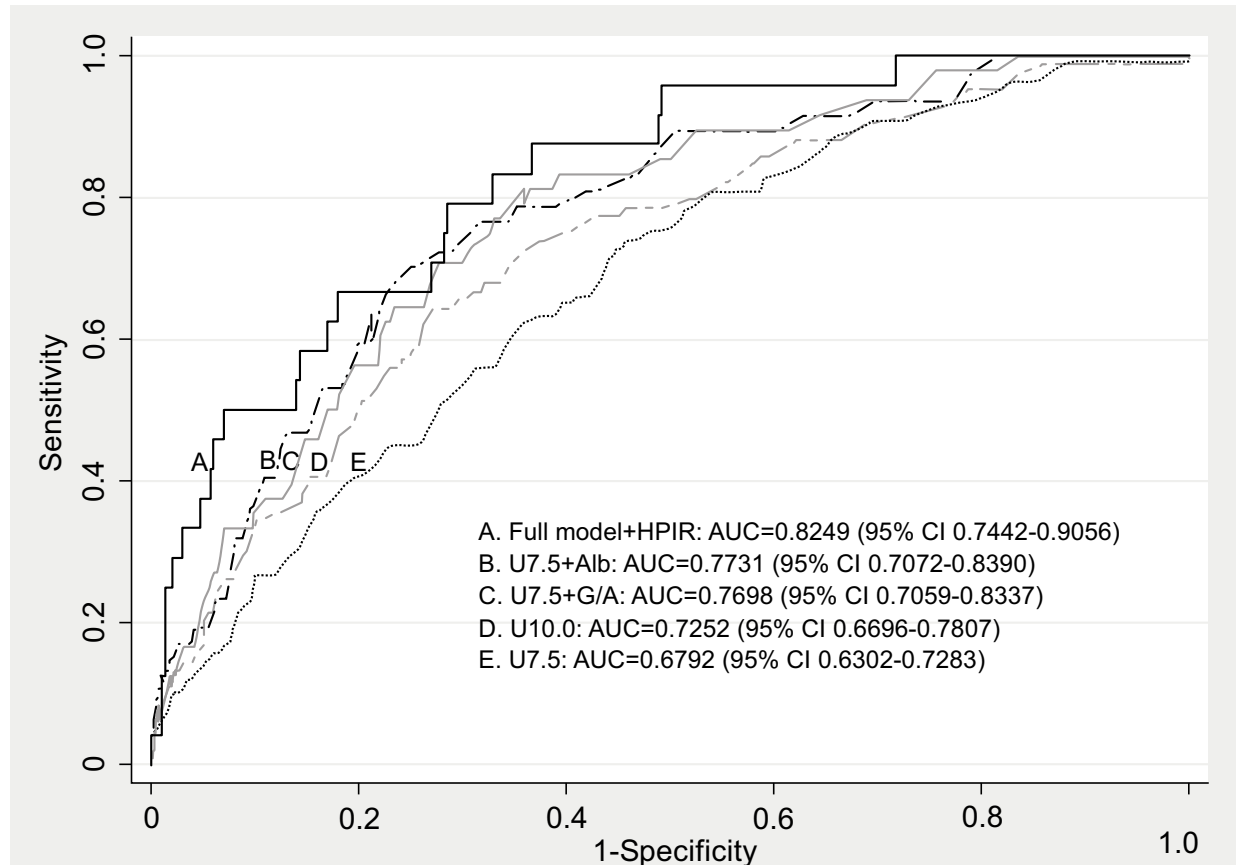


Fig. (1). Receiver-operating characteristic curves (ROC) of elevated serum urea levels at admission (alone and in combination with other factors) for predicting the all-cause in-hospital mortality in older patients with hip fracture. A (solid line), ROC curve based on data from the full model (8 on admission independent risk factors plus HPIR vs. 0 risk factors); B, ROC curve based on combination of urea>7.5mmol/L and albumin <33g/L; C, ROC curve based on combination of urea>7.5mmol/L and GGT/ALT>2.5; D, ROC curve based on urea>10.0mmol/L and E, ROC curve based on urea>7.5mmol/L.

Abbreviations: AUC, area under receiver operating characteristic curve; CI, confidence interval; HPIR, high postoperative inflammatory response; U7.5, serum urea>7.5mmol/L; Alb, serum albumin<33g/L; G/A, gamma-glutamyl transferase/alanine aminotransferase ratio (GGT/ALT); U10.0, serum urea>10.0mmol/L.

4. DISCUSSION

4.1. Main Findings

This study based on a relatively large and well defined cohort of older HF patients with parallel assessment of a broad spectrum of clinical and laboratory parameters showed that elevated serum urea levels (>7.5mmol/L) at the time of admission (1) were prevalent (44%), (2) independently determined by CKD, history of MI, anaemia, hyperparathyroidism, advanced age and male gender, and (3) had a substantial impact on prognostication hospital outcomes, in particular, mortality and developing HPIR, being associated with 2.6-fold and 2.2-fold greater odds, respectively. Patients with increased admission urea and HPIR demonstrated almost 10 times greater mortality odds compared to patients without such characteristics. Fig. (2) depicts a summary of the key findings of our study.

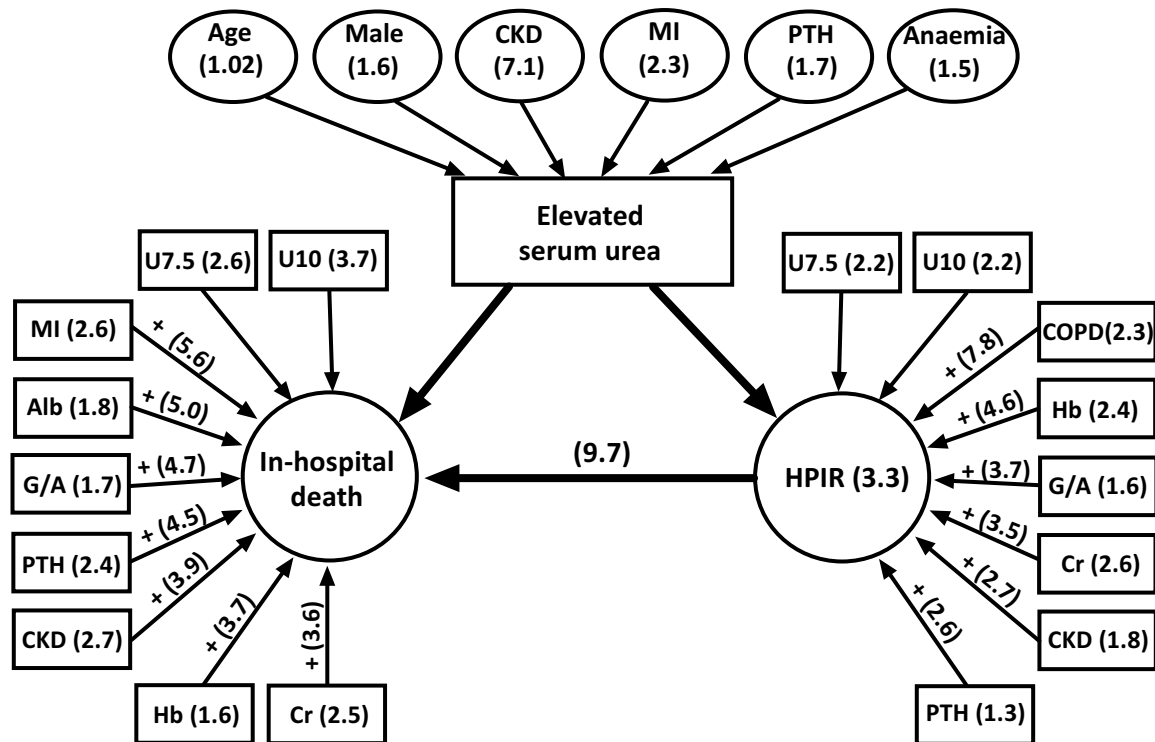


Fig. (2). Integrative schematic illustration of the prognostic impact of elevated urea at admission alone and in combination with other factors for predicting poor in-hospital outcome in older patients with HF.

Conditions independently associated with elevated urea at admission are shown in ovals. Square boxes indicate on admission factors (adjusted for age and gender) influencing the specific outcome. Odds ratios for each parameter are shown in brackets; + above the arrow indicates combined effect of two parameters on the outcome.

Abbreviations: CKD, chronic kidney disease; MI, history of myocardial infarction; COPD, chronic obstructive pulmonary disease; HPIR, high postoperative inflammatory response; PTH, hyperparathyroidism (>6.8pmol/L); Alb, serum albumin<33g/L; G/A, gamma-glutamyl transferase/alanine aminotransferase ratio (GGT/ALT); Hb, anaemia (haemoglobin<110g/L); Cr, creatinine >90µmol/L

Notes: CKD, history of MI, hyperparathyroidism, anaemia, advanced age and male gender are independent and significant factors associated with elevated urea at admission, which is a strong indicator of both in-hospital death and developing a HPIR.

Increased urea at admission combined with any other risk factor has an additive prognostic effect. Elevated urea predisposes to a HPIR, which carries a high risk of a fatal outcome by itself, and in patients exposed to both conditions a synergistic effect on mortality occurs.

4.2. Serum Urea And Prognosis

Serum urea, the terminal product of protein and amino acid metabolism and the major circulating pool of nitrogen, is produced exclusively in the hepatocytes in five reactions (two first steps in the mitochondrial matrix and the last 3 in the cytosol - Krebs-Henseleit urea cycle), and is excreted in the urine (about 80% of the eliminated waste nitrogen). Urea plays key roles in detoxification of harmful ammonia produced by amino acid catabolism and in osmoregulation [29]. Serum urea concentration is a cumulative result of multiple influences, including protein intake and catabolism, physical activity, fluid balance, liver synthetic function, urea recycling in the colon, tubular urea reabsorption, endocrine (especially, adrenal gluco- and mineralocorticoids) and renal neurohormonal activation [2, 3, 5, 9, 29 - 37]. Although the liver is the main ureagenic organ, and urea plays multiple roles in different homeostatic mechanisms, in clinical studies until now, urea is often interpreted as a biochemical marker of renal function and its relation with other liver-specific functions and protein/nitrogen metabolism remains largely neglected. It should, however, be realised that serum urea concentration is maintained through tight coordination of many metabolic pathways and reflects the complicated interrelations between nutritional and hydration status, protein metabolism, liver, renal, gut, muscle, cardiovascular and endocrine systems. Compared to creatinine and GFR, changes in urea levels are more dependent on neurohumoral mechanisms regulating the reabsorption process (renin-angiotensin-aldosterone system and vasopressin) [3, 5, 9, 11, 36]. Elevated blood urea levels by inhibiting nitric oxide production may contribute to atherogenesis [38].

Increased urea should be considered not as mere biomarker of kidney damage, but an important factor in the multi-organ pathogenetic interactions. Abnormal urea, which may result from and be pathophysiologically linked to a wide variety of conditions, is prevalent in the elderly with multiple comorbidities, can lead to poor outcomes and, therefore, constitute a useful parameter for predicting hospital outcomes, especially mortality, in different medical and surgical settings [2 - 7, 9 - 11, 28, 39 - 46]. Our findings in HF patients are in keeping with these observations.

Renal dysfunction (using GFR or creatinine levels) has been widely [14, 16, 47, 48], though not universally [49, 50], accepted as a significant risk factor for post-HF mortality. Only few studies focussed on urea, and the published data have been conflicting. Elevated urea on admission has been reported as an independent predictor of in-hospital mortality [14] and included in some scoring models [17, 18, 51], but according to other studies urea was only marginally related [16] or not correlated with fatal short- and long-term outcome [15, 52].

In our study, urea level expressed both as a continuous and categorical variable demonstrated a significant association with poor outcomes in HF patients. Admission urea was the strongest correlate for hospital mortality and the second strongest for HPIR in comparison with all other tested biochemical parameters. Urea >7.5 mmol/L and >10 mmol/L performed best for predicting in-hospital death, and were associated with 2.6- and 3.7- fold (adjusted for age and gender) increased mortality, respectively, and with 2.2-fold higher incidence of HPIR compared to patients with normal admission urea. For fatal outcome urea level is a stronger contributor than any other biochemical or clinical variable at admission; it appears to be an integrative measure reflecting the most severe changes in the metabolism and, therefore, its quantification should not be ignored in predictive models.

Our work confirms the few previous reports that have shown that urea is associated with increased mortality in HF patients [14, 18] and numerous studies demonstrating such link in older adults with serious illnesses. Our results, however, are the first to demonstrate in HF patients an association between admission urea and HPIR, indicating that blood nitrogen homeostasis is an important regulator of susceptibility and response to inflammation/infection. Importantly, elevated admission urea had a strong effect on hospital mortality and HPIR independent of various clinically relevant covariates including preoperative history of MI, COPD, CKD, anaemia, low albumin, GGT/ALT >2.5 , high creatinine, increased PTH, vitamin D deficiency, fracture type, medication used, age and gender, making our findings more special since this was not done in previous studies.

Serum urea, however, did not show an independent association with LOS; its significant univariate association with prolonged LOS appears to be secondary to pre-fracture socio-demographic and clinical conditions and postoperative complications; it would be more meaningful when admission urea used for predicting primarily hospital death and developing HPIR.

We have further extended previous findings by exploring the prognostic value of admission urea (>7.5 mmol/L) and outcomes in HF patients with and without other well-established preoperative risk factors, which allows to separate the contribution of elevated urea and other abnormal characteristics on the risks of adverse outcome. Increased urea as a prognostic indicator interacted with other risk factors in an additive and multiplicative fashion (Fig. 2). The highest mortality risk was documented by combination of elevated urea with history of MI (OR 5.7), or hypoalbuminaemia (OR 5.0), or GGT/ALT >2.5 (OR 4.7), or hyperparathyroidism (OR 4.6), or CKD (OR 3.9). The highest risk of developing HPIR demonstrated patients in whom elevated urea was accompanied by COPD (OR 7.8), or anaemia (OR 4.6), or GGT/ALT >2.5 (OR 3.7), or creatinine >90 μ mol/L (OR 3.5). Some of these factors operate synergistically and together markedly enhance the risk of fatal outcome or/and HPIR. Patients with both increased urea and HPIR had a 9.7-fold higher risk of hospital death. These observations highlight the complex nature of postoperative outcomes, demonstrating that alterations in protein/nitrogen homeostasis on admission (as assessed by elevated urea, hypoalbuminaemia, higher GGT/ALT ratio), history of CKD, MI, COPD, increased creatinine levels, anaemia, and hyperparathyroidism have a strong detrimental prognostic influence per se, whereas presence of two conditions (elevated urea plus any of the abovementioned) further significantly aggravates prognosis (by 1.5-2-fold on average).

Furthermore, closer examination revealed that most of the abovementioned laboratory and clinical variables previously recognised as risk factors for poor outcomes were not predictive in patients with normal admission urea. Although in the regression models (adjusted for age and gender) serum albumin, PTH, creatinine, GFR (both as a continuous and as a categorical variable), as well as history of MI, anaemia and COPD showed significant associations with increased risk of mortality and/or HPIR, our analyses demonstrated, for the first time, that this effects achieved statistical significance in patients with elevated admission urea but not in subjects with normal urea; this aspect has been masked to date. Indeed, in patients with normal urea at admission, only CKD was a significant risk factor for

hospital death and HPIR, and anaemia (Hb<120g/L) indicated a risk of HPIR, whereas other studied factors lost their discriminative value; even developing a HPIR did not increase mortality risk, but elevated urea remained a significant predictor when most of the abovementioned parameters were normal (Table 4). These results emphasise that the prognostic performance of characteristics previously recognised as risk factors for poor hospital outcomes depends on urea status, therefore, their clinical interpretation should be in conjunction with urea level.

Why urea is associated with increased mortality and HPIR is not yet completely understood. Considering the many urea-related complex metabolic and pathophysiological pathways, including inflammation [53, 54], oxidative stress [53 - 57], and stress-induced hypermetabolic/catabolic response [58 - 60], elevated urea in HF (as in other) patients may be viewed as an integrative (but unspecific) outcome-relevant marker of severity of chronic and acute conditions and ageing; it mirrors the patient's degree of physiological reserves/frailty and altered homeostasis [61, 62] explaining the high risks for adverse effects.

4.3. Predictive Value of Elevated Urea

In older HF patients, admission urea >10mmol/L as a single parameter has a reasonable ability to predict hospital death (AUC 0.7252, accuracy 73.3%), while the discriminative accuracy of other studied clinical and biochemical variables is relatively low. An integration of two characteristics (urea>7.5mmol/L plus one traditional risk factor) materially improves the prediction of mortality and HPIR, as evidenced by increases in AUCs (Table 5). Among combined parameters at admission highest AUC for prediction mortality yielded elevated urea (>7.5mmol/L) plus low albumin (AUC 0.7731) or GGT/ALT>2.5 (AUC 0.7698) and for prediction HPIR elevated urea plus anaemia (AUC 0.6928) or increased creatinine (AUC 0.6561) or GGT/ALT>2.5 (AUC 0.6418). Urea combined with other easily obtainable parameters at admission reached reasonable accuracy in identifying HF patients who are at risk of hospital mortality (sensitivity of 51-78%, NPV>95%) and HPIR (sensitivity 30-60%, NPV >90%). Elevated urea at admission is a strong independent predictor for hospital death, in particular among subjects who developed HPIR; these two conditions combined demonstrate the highest predictive value for unfavorable survival outcome (AUC 0.8176) with sensitivity of 62.5%, high specificity (87.5%) and high NPV (96.6%).

In the past decade a number of studies have aimed to identify clinical factors and/or biomarkers of poor outcome in HF patients. The available prediction tools [63 - 68] are complex (need of special rating scales and calculations), time consuming, some include subjective assessment or show significant lack of fit [18, 69], and are not widely used in clinical practice. The presented here approach is based on routinely collected objective data, simple, easy to use and has a fair precision rate.

4.4. Practical Implications / Therapeutic Considerations

Elevated urea at admission signifies the presence of a serious underlying condition(s) which may negatively impact survival and response to stressors (fracture, surgery, blood loss, infection, etc.), and, therefore, should be properly assessed and treated. Urea status may help to optimise risk stratification, to identify modifiable conditions and timely initiate individualized appropriate management. In patients even with mildly increased serum urea at admission, especially when it is accompanied by hypoalbuminaemia, GGT/ALT>2.5, hyperparathyroidism, renal impairment, history of MI, anaemia or COPD, poor outcome should be suspected and, if possible, prevented; more than 50% of hospital deaths are classified as "at least possibly preventable" [70]. The identified in this study comorbid conditions independently associated with elevated serum urea offer additional avenues for risk stratification and preventive strategies. By reducing negative effects of these comorbidities (prophylaxis of myocardial necrosis, optimising pharmacotherapy for COPD, correcting anaemia), preventing contrast-related kidney injury, inflammatory/infectious and opioid-induced complications, optimising perioperative intravenous fluid management, addressing malnutrition, use of probiotics (shown to decrease the serum urea concentrations in patients with CKD [71]) and rapid mobilization it may be possible to improve hospital outcomes.

5. LIMITATIONS AND STRENGTHS

The following limitations of this single-centre study should be noted. Firstly, its observational design does not allow a causal conclusion. Secondly, the causes of hospital death as well as the causes of HPIR were not classified. Thirdly, our results are based on a single measurement on hospital admission, and these may change and fluctuate. Fourthly, the majority of patients were Caucasian, therefore, the results might not be applicable for other ethnicities.

The strengths of our study include its relatively large sample size, measurements of urea in parallel to a variety of

clinical and laboratory parameters, use of multivariate regression models to investigate the independent association of urea and comorbid conditions and outcomes, analyses of differential performance of previously established risk factors in patients with and without elevated serum urea at admission, and validation of the prognostic value of urea for hospital outcomes in an independent cohort. The variance inflation factor in all our regression models was ≤ 1.16 , indicating that the amount of multicollinearity was not significant.

CONCLUSION

In older HF patients, serum urea, a routinely measured key factor of nitrogen homeostasis, was identified as an independent and valuable prognostic indicator for predicting poor hospital outcomes, in particular, mortality and developing HPIR. The predictive value of elevated urea was superior to other risk factors, most of which lost their discriminative ability when the admission urea levels were normal. The predictive performance of urea increased significantly when it was combined with other prognostic indicators. The risk of in-hospital death was almost 10 times higher in patients with elevated admission urea who developed HPIR.

LIST OF ABBREVIATIONS

Ac	=	Accuracy
Alb	=	Serum albumin
ALP	=	Alkaline phosphatase
ALT	=	Alanine aminotransferase
AUC	=	Area under receiver operating characteristic curve
CAD	=	Coronary artery disease
CVA	=	Cerebrovascular accident
CI	=	Confidence interval
CKD	=	Chronic kidney disease
COPD	=	Chronic obstructive pulmonary disease
CRP	=	C-reactive protein
DM	=	Diabetes mellitus type 2
G/A	=	Gamma-glutamyl transferase/alanine aminotransferase ratio
GGT	=	Gamma-glutamyl transferase
GFR	=	Glomerular filtration rate
Hb	=	Haemoglobin
HF	=	Hip fracture
HPIR	=	High postoperative inflammatory response
LOS	=	Length of hospital stay
MI	=	Myocardial infarction
NPV	=	Negative predictive value
OR	=	Odds ratio
PPV	=	Positive predictive value
PTH	=	Parathyroid hormone
RCF	=	Residential care facility (permanent)
25(OH)D	=	25(OH) vitamin D
ROC	=	Receiver-operating characteristic curves
Se	=	Sensitivity
Sp	=	Specificity

ETHICS APPROVAL AND CONSENT TO PARTICIPATE

This study was approved by the Australian Capital Territory Health Human Research Ethical Committee and waived the requirement for written consent as only routinely collected and anonymized before analysis data were used.

HUMAN AND ANIMAL RIGHTS

No animals were used for studies that are the basis of this research.

CONSENT FOR PUBLICATION

Written consent as only routinely collected and anonymized before analysis data were used.

CONFLICT OF INTEREST

The authors declare no conflict of interest, financial or otherwise.

ACKNOWLEDGEMENTS

Declared none.

REFERENCES

- [1] Al Suwaidi J, Reddan DN, Williams K, *et al.* Prognostic implications of abnormalities in renal function in patients with acute coronary syndromes. *Circulation* 2002; 106(8): 974-80.
[<http://dx.doi.org/10.1161/01.CIR.0000027560.41358.B3>]
- [2] Aronson D, Mittleman MA, Burger AJ. Elevated blood urea nitrogen level as a predictor of mortality in patients admitted for decompensated heart failure. *Am J Med* 2004; 116(7): 466-73.
[<http://dx.doi.org/10.1016/j.amjmed.2003.11.014>]
- [3] Filippatos G, Rossi J, Lloyd-Jones DM, *et al.* Prognostic value of blood urea nitrogen in patients hospitalized with worsening heart failure: Insights from the acute and chronic therapeutic impact of a vasopressin antagonist in chronic heart failure (ACTIV in CHF) study. *J Card Fail* 2007; 13(5): 360-4.
[<http://dx.doi.org/10.1016/j.cardfail.2007.02.005>]
- [4] Singh G, Peterson EL, Wells K, Williams LK, Lanfear DE. Comparison of renal predictors for in-hospital and postdischarge mortality after hospitalized heart failure. *J Cardiovasc Med (Hagerstown)* 2012; 13(4): 246-53.
[<http://dx.doi.org/10.2459/JCM.0b013e3283516767>]
- [5] Lindenfeld J, Schrier RW. Blood urea nitrogen a marker for adverse effects of loop diuretics? *J Am Coll Cardiol* 2011; 58(4): 383-5.
[<http://dx.doi.org/10.1016/j.jacc.2011.01.054>]
- [6] Kirtane AJ, Leder DM, Waikar SS, *et al.* Serum blood urea nitrogen as an independent marker of subsequent mortality among patients with acute coronary syndromes and normal to mildly reduced glomerular filtration rates. *J Am Coll Cardiol* 2005; 45(11): 1781-6.
[<http://dx.doi.org/10.1016/j.jacc.2005.02.068>]
- [7] Fonarow GC, Adams KF Jr, Abraham WT, Yancy CW, Boscardin WJ. Risk stratification for in-hospital mortality in acutely decompensated heart failure: Classification and regression tree analysis. *JAMA* 2005; 293(5): 572-80.
[<http://dx.doi.org/10.1001/jama.293.5.572>]
- [8] Saygıtov RT, Glezer MG, Semakina SV. Blood urea nitrogen and creatinine levels at admission for mortality risk assessment in patients with acute coronary syndromes. *Emerg Med J* 2010; 27(2): 105-9.
[<http://dx.doi.org/10.1136/emj.2008.068155>]
- [9] Beier K, Eppanapally S, Bazick HS, Chang D, *et al.* Elevation of blood urea nitrogen is predictive of long-term mortality in critically ill patients independent of "normal" creatinine. *Crit Care Med* 2011; 39(2): 305-13.
[<http://dx.doi.org/10.1097/CCM.0b013e3181ffe22a>]
- [10] Kajimoto K, Sato N, Takano T. and investigators A eGFR and Outcomes in Patients with Acute Decompensated Heart Failure with or without Elevated BUN *Clin J Am Soc Nephrol* 2016; 11(3): 405-12.
[<http://dx.doi.org/10.2215/CJN.08210815>]
- [11] Matsue Y, van der Meer P, Damman K, *et al.* Blood urea nitrogen-to-creatinine ratio in the general population and in patients with acute heart failure. *Heart* 2017; 103(6): 407-13.
[<http://dx.doi.org/10.1136/heartjnl-2016-310112>]
- [12] Jiang H, Li J, Yu K, Yang H, Min X, Chen H, *et al.* Associations of estimated glomerular filtration rate and blood urea nitrogen with incident coronary heart disease: The Dongfeng-Tongji Cohort Study. *Sci Rep* 2017; 7(1): 9987.
[<http://dx.doi.org/10.1038/s41598-017-09591-6>]
- [13] Klein L, Massie BM, Leimberger JD, *et al.* Admission or changes in renal function during hospitalization for worsening heart failure predict postdischarge survival: Results from the Outcomes of a Prospective Trial of Intravenous Milrinone for Exacerbations of Chronic Heart Failure (OPTIME-CHF). *Circ Heart Fail* 2008; 1(1): 25-33.
[<http://dx.doi.org/10.1161/CIRCHEARTFAILURE.107.746933>]
- [14] Lewis JR, Hassan SK, Wenn RT, Moran CG. Mortality and serum urea and electrolytes on admission for hip fracture patients. *Injury* 2006; 37(8): 698-704.
[<http://dx.doi.org/10.1016/j.injury.2006.04.121>]

- [15] Singh Mangat K, Mehra A, Yunas I, Nightingale P, Porter K. Is estimated peri-operative glomerular filtration rate associated with post-operative mortality in fractured neck of femur patients? *Injury* 2008; 39(10): 1141-6. [<http://dx.doi.org/10.1016/j.injury.2008.02.034>]
- [16] Khan SK, Rushton SP, Courtney M, Gray AC, Deehan DJ. Elderly men with renal dysfunction are most at risk for poor outcome after neck of femur fractures. *Age Ageing* 2013; 42(1): 76-81. [<http://dx.doi.org/10.1093/ageing/afs152>]
- [17] Li CY, Zhang XC, Zheng X, *et al.* *Zhongguo Gu Shang* 2017; 30(10): 901-5. [Effect of admission blood urea and creatinine levels on mortality in elderly patients with hip fracture].
- [18] Karres J, Kieviet N, Eerenberg JP, Vrouenraets BC. Predicting early mortality after hip fracture surgery: The hip fracture estimator of mortality amsterdam. *J Orthop Trauma* 2018; 32(1): 27-33. [<http://dx.doi.org/10.1097/BOT.0000000000001025>]
- [19] Cabrerizo S, Cuadras D, Gomez-Busto F, Artaza-Artabe I, Marin-Ciancas F, Malafarina V. Serum albumin and health in older people: Review and meta analysis. *Maturitas* 2015; 81(1): 17-27. [<http://dx.doi.org/10.1016/j.maturitas.2015.02.009>]
- [20] Fisher L, Srikusalanukul W, Fisher A, Smith P. Liver function parameters in hip fracture patients: Relations to age, adipokines, comorbidities and outcomes. *Int J Med Sci* 2015; 12(2): 100-15. [<http://dx.doi.org/10.7150/ijms.10696>]
- [21] Bohl DD, Shen MR, Hannon CP, *et al.* Serum albumin predicts survival and postoperative course following surgery for geriatric hip fracture. *J Bone Joint Surg Am* 2017; 99(24): 2110-8. [<http://dx.doi.org/10.2106/JBJS.16.01620>]
- [22] Fisher A, Fisher L, Srikusalanukul W, Smith PN. Usefulness of simple biomarkers at admission as independent indicators and predictors of in-hospital mortality in older hip fracture patients. *Injury* 2018; 49(4): 829-40. [<http://dx.doi.org/10.1016/j.injury.2018.03.005>]
- [23] Winter JM, Cameron JL, Yeo CJ, *et al.* Biochemical markers predict morbidity and mortality after pancreaticoduodenectomy. *J Am Coll Surg* 2007; 204(5): 1029-36. [<http://dx.doi.org/10.1016/j.jamcollsurg.2007.01.026>]
- [24] Aronson D, Hammerman H, Beyar R, *et al.* Serum blood urea nitrogen and long-term mortality in acute ST-elevation myocardial infarction. *Int J Cardiol* 2008; 127(3): 380-5. [<http://dx.doi.org/10.1016/j.ijcard.2007.05.013>]
- [25] Testani JM, Cappola TP, Brensinger CM, Shannon RP, Kimmel SE. Interaction between loop diuretic-associated mortality and blood urea nitrogen concentration in chronic heart failure. *J Am Coll Cardiol* 2011; 58(4): 375-82. [<http://dx.doi.org/10.1016/j.jacc.2011.01.052>]
- [26] Kajimoto K, Sato N, Takano T. Relation between elevated blood urea nitrogen, clinical features or comorbidities, and clinical outcome in patients hospitalized for acute heart failure syndromes 2015.
- [27] Arihan O, Wernly B, Lichtenauer M, *et al.* Blood Urea Nitrogen (BUN) is independently associated with mortality in critically ill patients admitted to ICU. *PLoS One* 2018; 13(1): e0191697. [<http://dx.doi.org/10.1371/journal.pone.0191697>]
- [28] Abisheganaden J, Ding YY, Chong WF, Heng BH, Lim TK. Predicting mortality among older adults hospitalized for community-acquired pneumonia: an enhanced confusion, urea, respiratory rate and blood pressure score compared with pneumonia severity index. *Respirology* 2012; 17(6): 969-75. [<http://dx.doi.org/10.1111/j.1440-1843.2012.02183.x>]
- [29] Weiner ID, Mitch WE, Sands JM. Urea and Ammonia Metabolism and the Control of Renal Nitrogen Excretion. *Clin J Am Soc Nephrol* 2015; 10(8): 1444-58. [<http://dx.doi.org/10.2215/CJN.10311013>]
- [30] Ivarsen P, Greisen J, Vilstrup H. Acute effects of moderate dehydration on the hepatic conversion of amino nitrogen into urea nitrogen in healthy men. *Clin Sci (Lond)* 2001; 101(4): 339-44. [<http://dx.doi.org/10.1042/cs1010339>]
- [31] Smith GL, Shlipak MG, Havranek EP, *et al.* Serum urea nitrogen, creatinine, and estimators of renal function: mortality in older patients with cardiovascular disease. *Arch Intern Med* 2006; 166(10): 1134-42. [<http://dx.doi.org/10.1001/archinte.166.10.1134>]
- [32] Fouillet H, Juillet B, Bos C, *et al.* Urea-nitrogen production and salvage are modulated by protein intake in fed humans: results of an oral stable-isotope-tracer protocol and compartmental modeling. *Am J Clin Nutr* 2008; 87(6): 1702-14. [<http://dx.doi.org/10.1093/ajcn/87.6.1702>]
- [33] Kazory A. Emergence of blood urea nitrogen as a biomarker of neurohormonal activation in heart failure. *Am J Cardiol* 2010; 106(5): 694-700. [<http://dx.doi.org/10.1016/j.amjcard.2010.04.024>]
- [34] LeMoine CM, Walsh PJ. Evolution of urea transporters in vertebrates: adaptation to urea's multiple roles and metabolic sources. *J Exp Biol*

- 2015; 218(Pt 12): 1936-45.
[<http://dx.doi.org/10.1242/jeb.114223>]
- [35] Kato A, Klein JD, Zhang C, Sands JM. Angiotensin II increases vasopressin-stimulated facilitated urea permeability in rat terminal IMCDs. *Am J Physiol Renal Physiol* 2000; 279(5): F835-40.
[<http://dx.doi.org/10.1152/ajprenal.2000.279.5.F835>]
- [36] Schrier RW. Blood urea nitrogen and serum creatinine: not married in heart failure. *Circ Heart Fail* 2008; 1(1): 2-5.
[<http://dx.doi.org/10.1161/CIRCHEARTFAILURE.108.770834>]
- [37] Fenton RA. Essential role of vasopressin-regulated urea transport processes in the mammalian kidney. *Pflugers Arch* 2009; 458(1): 169-77.
[<http://dx.doi.org/10.1007/s00424-008-0612-4>]
- [38] Moeslinger T, Spieckermann PG. Urea-induced inducible nitric oxide synthase inhibition and macrophage proliferation 2001.
- [39] Espana PP, Capelastegui A, Gorordo I, Esteban C, Oribe M, Ortega M, *et al.* Development and validation of a clinical prediction rule for severe community-acquired pneumonia. *Am J Respir Crit Care Med* 2006; 174(11): 1249-56.
[<http://dx.doi.org/10.1164/rccm.200602-177OC>]
- [40] Shenkman HJ, Zareba W, Bisognano JD. Comparison of prognostic significance of amino-terminal pro-brain natriuretic Peptide *versus* blood urea nitrogen for predicting events in patients hospitalized for heart failure. *Am J Cardiol* 2007; 99(8): 1143-5.
[<http://dx.doi.org/10.1016/j.amjcard.2006.11.050>]
- [41] Cauthen CA, Lipinski MJ, *et al.* Relation of blood urea nitrogen to long-term mortality in patients with heart failure. *Am J Cardiol* 2008; 101(11): 1643-7.
[<http://dx.doi.org/10.1016/j.amjcard.2008.01.047>]
- [42] Chen SC, Tsai SJ, Chen CH, Huang CC, Lin DB, Wang PH, *et al.* Predictors of mortality in patients with pyogenic liver abscess. *Neth J Med* 2008; 66(5): 196-203.
- [43] Faisst M, Wellner UF, Utzolino S, Hopt UT, Keck T. Elevated blood urea nitrogen is an independent risk factor of prolonged intensive care unit stay due to acute necrotizing pancreatitis. *J Crit Care* 2010; 25(1): 105-11.
[<http://dx.doi.org/10.1016/j.jcrc.2009.02.002>]
- [44] Wu BU, Bakker OJ, Papachristou GI, *et al.* Blood urea nitrogen in the early assessment of acute pancreatitis: an international validation study. *Arch Intern Med* 2011; 171(7): 669-76.
[<http://dx.doi.org/10.1001/archinternmed.2011.126>]
- [45] Metra M, Cotter G, Gheorghiade M, Dei Cas L, Voors AA. The role of the kidney in heart failure. *Eur Heart J* 2012; 33(17): 2135-42.
[<http://dx.doi.org/10.1093/eurheartj/ehs205>]
- [46] Talukdar R, Nechutova H, Clemens M, Vege SS. Could rising BUN predict the future development of infected pancreatic necrosis? *Pancreatol* 2013; 13(4): 355-9.
[<http://dx.doi.org/10.1016/j.pan.2013.05.003>]
- [47] Mosfeldt M, Pedersen OB, Riis T, *et al.* Value of routine blood tests for prediction of mortality risk in hip fracture patients. *Acta Orthop* 2012; 83(1): 31-5.
[<http://dx.doi.org/10.3109/17453674.2011.652883>]
- [48] Kim SM, Long J, Montez-Rath M, Leonard M, Chertow GM. Hip Fracture in Patients With Non-Dialysis-Requiring Chronic Kidney Disease. *J Bone Miner Res* 2016; 31(10): 1803-9.
[<http://dx.doi.org/10.1002/jbmr.2862>]
- [49] Bjorkelund KB, Hommel A, Thorngren KG, Lundberg D, Larsson S. Factors at admission associated with 4 months outcome in elderly patients with hip fracture. *AANA J* 2009; 77(1): 49-58.
- [50] Robertson L, Black C, Fluck N, *et al.* Hip fracture incidence and mortality in chronic kidney disease: the GLOMMS-II record linkage cohort study. *BMJ Open* 2018; 8(4): e020312.
[<http://dx.doi.org/10.1136/bmjopen-2017-020312>]
- [51] Lopez-Martinez C, Tovar-Rivera E, Becerra-Laparra IK, Chavez-Tapia NC. Clinical impact of indirect markers of renal function in elderly patients with hip fracture. *Geriatr Orthop Surg Rehabil* 2014; 5(3): 131-7.
[<http://dx.doi.org/10.1177/2151458514542336>]
- [52] Gulin T, Kruljac I, Kirigin L, *et al.* Advanced Age, High beta-CTX Levels, and Impaired Renal Function are Independent Risk Factors for All-Cause One-Year Mortality in Hip Fracture Patients. *Calcif Tissue Int* 2016; 98(1): 67-75.
[<http://dx.doi.org/10.1007/s00223-015-0070-x>]
- [53] Thomsen KL, Jessen N, Moller AB, *et al.* Regulation of urea synthesis during the acute-phase response in rats. *Am J Physiol Gastrointest Liver Physiol* 2013; 304(7): G680-6.
[<http://dx.doi.org/10.1152/ajpgi.00416.2012>]
- [54] Lau WL, Vaziri ND. Urea, a true uremic toxin: the empire strikes back. *Clin Sci (Lond)* 2017; 131(1): 3-12.
[<http://dx.doi.org/10.1042/CS20160203>]
- [55] Il'yasova D, Scarbrough P, Spasojevic I. Urinary biomarkers of oxidative status. *Clin Chim Acta* 2012; 413(19-20): 1446-53.
[<http://dx.doi.org/10.1016/j.cca.2012.06.012>]

- [56] Bigot A, Tchan MC, Thoreau B, Blasco H, Maillot F. Liver involvement in urea cycle disorders: a review of the literature. *J Inher Metab Dis* 2017; 40(6): 757-69.
[<http://dx.doi.org/10.1007/s10545-017-0088-5>]
- [57] Parmeggiani B, Vargas CR. 2018. Oxidative stress in urea cycle disorders: Findings from clinical and basic research. *Clin Chim Acta* 477(121-126)
- [58] Matthews DE, Battezzati A. Regulation of protein metabolism during stress. *Curr Opin Gen Surg* 1993; 72-7.
- [59] Thomsen KL, Aagaard NK, Gronbaek H, *et al.* IL-6 has no acute effect on the regulation of urea synthesis *in vivo* in rats. *Scand J Clin Lab Invest* 2011; 71(2): 150-6.
[<http://dx.doi.org/10.3109/00365513.2010.547213>]
- [60] Deer RR, Volpi E. Protein Requirements in Critically Ill Older Adults. *Nutrients* 2018; 10(3)
[<http://dx.doi.org/10.3390/nu10030378>]
- [61] Bion JF. Susceptibility to critical illness: Reserve, response and therapy *Intensive Care Med* ;26 Suppl 1(S57-63) 2000.
- [62] Partridge JS, Harari D, Dhesei JK. Frailty in the older surgical patient: a review. *Age Ageing* 2012; 41(2): 142-7.
[<http://dx.doi.org/10.1093/ageing/afr182>]
- [63] Jiang HX, Majumdar SR, Dick DA, *et al.* Development and initial validation of a risk score for predicting in-hospital and 1-year mortality in patients with hip fractures. *J Bone Miner Res* 2005; 20(3): 494-500.
[<http://dx.doi.org/10.1359/JBMR.041133>]
- [64] Holt G, Smith R, Duncan K, Finlayson DF, Gregori A. Early mortality after surgical fixation of hip fractures in the elderly: an analysis of data from the scottish hip fracture audit. *J Bone Joint Surg Br* 2008; 90(10): 1357-63.
[<http://dx.doi.org/10.1302/0301-620X.90B10.21328>]
- [65] van Zeeland ML, Genovesi IP, Mulder JW, Strating PR, Glas AS, Engel AF. POSSUM predicts hospital mortality and long-term survival in patients with hip fractures. *J Trauma* 2011; 70(4): E67-72.
[<http://dx.doi.org/10.1097/TA.0b013e3181edbf7a>]
- [66] Moppett IK, Parker M, Griffiths R, Bowers T, White SM, Moran CG. Nottingham Hip Fracture Score: longitudinal and multi-assessment. *Br J Anaesth* 2012; 109(4): 546-50.
[<http://dx.doi.org/10.1093/bja/aes187>]
- [67] Dawe EJ, Lindisfarne E, Singh T, McFadyen I, Stott P. Sernbo score predicts survival after intracapsular hip fracture in the elderly. *Ann R Coll Surg Engl* 2013; 95(1): 29-33.
[<http://dx.doi.org/10.1308/003588413X13511609954653>]
- [68] Rushton PR, Reed MR, Pratt RK. Independent validation of the Nottingham Hip Fracture Score and identification of regional variation in patient risk within England. *Bone Joint J* 2015; 97-B(1): 100-3.
[<http://dx.doi.org/10.1302/0301-620X.97B1.34670>]
- [69] Karres J, Heesackers NA, Ultee JM, Vrouwenraets BC. Predicting 30-day mortality following hip fracture surgery: evaluation of six risk prediction models. *Injury* 2015; 46(2): 371-7.
[<http://dx.doi.org/10.1016/j.injury.2014.11.004>]
- [70] Tarrant SM, Hardy BM, Byth PL, Brown TL, Attia J, Balogh ZJ. Preventable mortality in geriatric hip fracture inpatients. *Bone Joint J* 2014; 96-B(9): 1178-84.
[<http://dx.doi.org/10.1302/0301-620X.96B9.32814>]
- [71] Miranda Alatraste PV, Urbina Arronte R, Gomez Espinosa CO, Espinosa Cuevas Mde L. Effect of probiotics on human blood urea levels in patients with chronic renal failure. *Nutr Hosp* 2014; 29(3): 582-90.