

# Supportive Materials

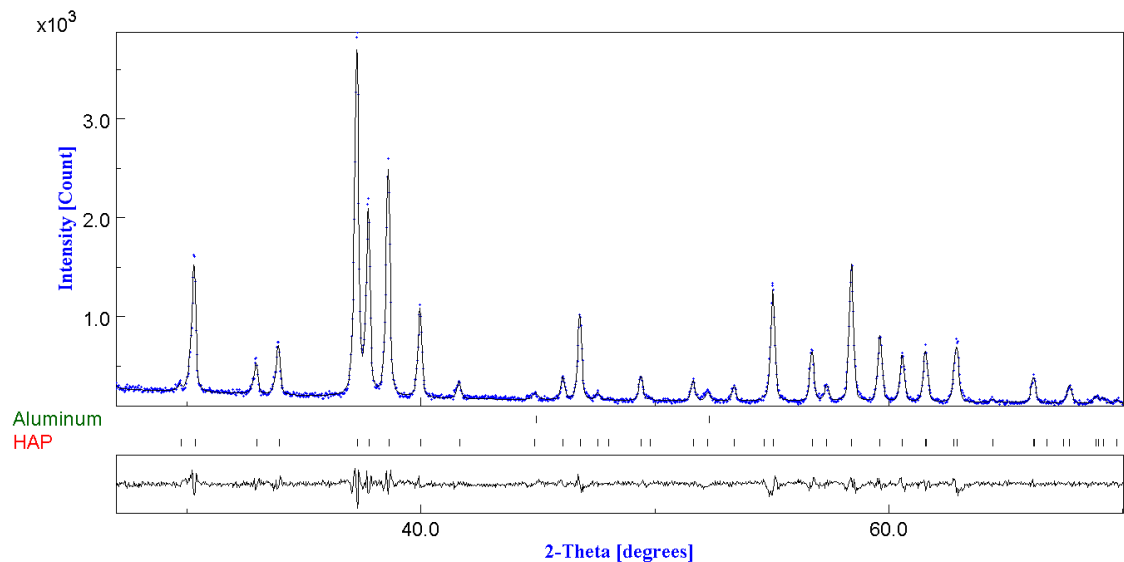


Fig. (1). Rietveld refinement on HA coating (12 spray runs) ( $R_{exp}$ =6.00%).

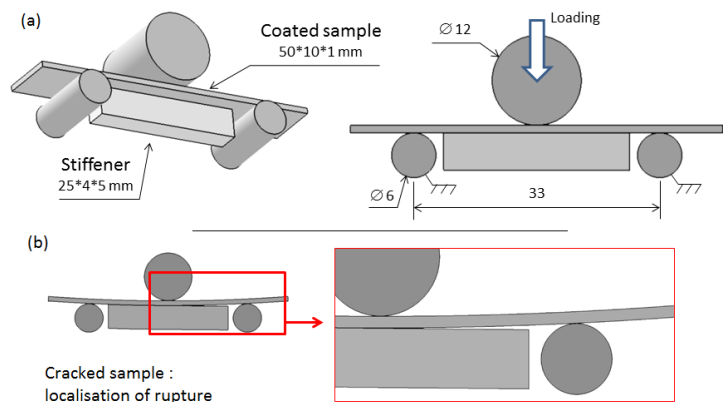


Fig. (2). (a): illustration of experimental three point bending setup; (b) localization of rupture for a successfully tested sample.

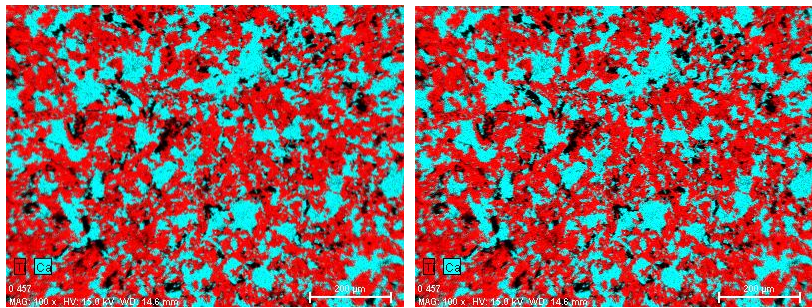


Fig. (3). Chemical (EDX) maps performed on debonded area, related to substrate (titanium) and coating (calcium) for HAP (left) and CLA (right).