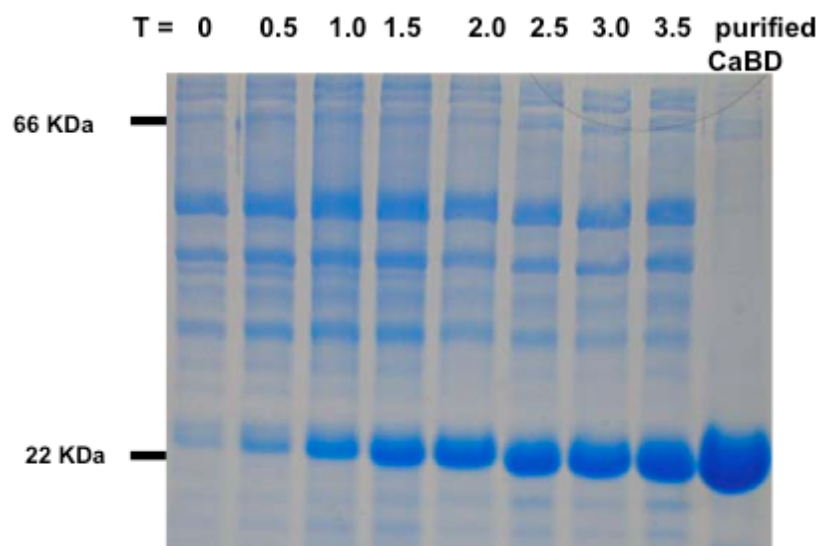


## SUPPLEMENTARY MATERIAL



**Fig. (1S). CaBD expression and purification.** The expression of CaBD was monitored every half hour on a 15% SDS-PAGE and the purified CaBD after the  $\text{Ni}^{2+}$ -chelating and phenylsepharose columns was shown on the right. E99Q/E143Q had the similar expression level and purity as the wild type (data not shown).