

Drug Discovery Toward Antagonists of Methyl-Lysine Binding Proteins

J. Martin Herold, Lindsey A. Ingerman, Cen Gao and Stephen V. Frye*

Center for Integrated Chemical Biology and Drug Discovery, UNC Eshelman School of Pharmacy, Division of Medicinal Chemistry and Natural Products, University of North Carolina at Chapel Hill, Chapel Hill, North Carolina 27599, USA

Abstract: The recognition of methyl-lysine and -arginine residues on both histone and other proteins by specific “reader” elements is important for chromatin regulation, gene expression, and control of cell-cycle progression. Recently the crucial role of these reader proteins in cancer development and dedifferentiation has emerged, owing to the increased interest among the scientific community. The methyl-lysine and -arginine readers are a large and very diverse set of effector proteins and targeting them with small molecule probes in drug discovery will inevitably require a detailed understanding of their structural biology and mechanism of binding. In the following review, the critical elements of methyl-lysine and -arginine recognition will be summarized with respect to each protein family and initial results in assay development, probe design, and drug discovery will be highlighted.

Keywords: Histones, chromatin, chemical probes, reader domains, methyl-lysine, methyl-arginine, post-translational modifications, pi-cation interactions, drug discovery.

INTRODUCTION AND PROTEIN FAMILIES

Methylation of lysine and arginine residues on histones and other proteins plays a crucial role in the activation and repression of gene expression, and consequently, the study of epigenetic regulation has recently emerged as both a major challenge and an opportunity in biomedical sciences [1, 2]. Methylation is often considered to be one letter in a diverse alphabet of histone post-translational modifications (PTMs), including phosphorylation, ubiquitination, acetylation, and glycosylation, among others [3, 4]. PTMs play a critical role in the regulation of signaling pathways where they can serve as chemical switches to induce or repress protein-protein interactions [5]. In particular, methylation marks have been shown to serve as initiators for the recruitment of non-histone proteins which dictate higher-order chromatin structure and function, such as gene expression and repression [3, 6].

Understanding the role of histone PTMs is complicated by the fact that the same chemical modification located at different positions within a single protein can have different effects on gene expression. For example, within the histone 3 tail, methylation of lysine 4 (H3K4), H3K36, or H3K79 results in activation of transcription, whereas methylation of H3K9 or H3K27 results in transcriptional repression. This situation is further complicated by the fact that both arginine and lysine can be variably methylated, causing the overall transcriptional outcome to be dictated by both the position of the residue and the degree of methylation [7]. Histone methyltransferases can add up to three methyl groups to a single lysine side chain, while arginine can exist as either

monomethyl or dimethyl arginine, the latter in either a symmetric (sRme2) or asymmetric (aRme2) fashion (Fig. 1).

Although the mechanisms by which cells decipher a PTM-mediated histone code are far from completely understood, it is becoming clear that histone PTMs are read by effector proteins which facilitate downstream events *via* the recruitment and/or stabilization of chromatin-templated machinery [8, 9]. Exploration of these epigenetic readers therefore plays a key role in furthering our understanding of how histone PTMs regulate complex biological functions [10, 11]. The identification of binding modules for methylated lysines has been largely successful, whereas protein receptors for methylated arginines in histone proteins have received less attention to date [12]. While methyl-lysine and -arginine readers are most commonly associated with the recognition of histone modifications, they are also known to interact with methylation marks on non-histone proteins, as will be discussed in further detail. The identification of novel reader proteins remains a challenge, as does the broader goal of understanding the relationship between PTM binding proteins and human disease.

Current estimates of the number of methyl-lysine binding proteins in the human proteome exceeds 170 [13] and this number continues to grow with ongoing research. Despite various structural and functional differences, methyl-lysine and -arginine readers share many common features which facilitate their recognition of these PTMs. All methylated forms of lysine are cationic at physiological pH, while trimethyllysine contains a fixed positive charge irrespective of its environment. As the size, hydrophobicity, distribution of positive charge, and ability to serve as a hydrogen bond donor differs between methylation states, each PTM interacts with a protein reader that can adapt to these specific inherent physical properties. A subtle change in methylation state can impact the resulting protein-protein interaction with profound consequences for gene regulation and expression. A

*Address correspondence to this author at the Center for Integrated Chemical Biology and Drug Discovery, UNC Eshelman School of Pharmacy, Division of Medicinal Chemistry and Natural Products, University of North Carolina at Chapel Hill, Chapel Hill, North Carolina 27599, USA; Tel: 919-843-5486; Fax: 919-843-8465; E-mail: svfrye@email.unc.edu

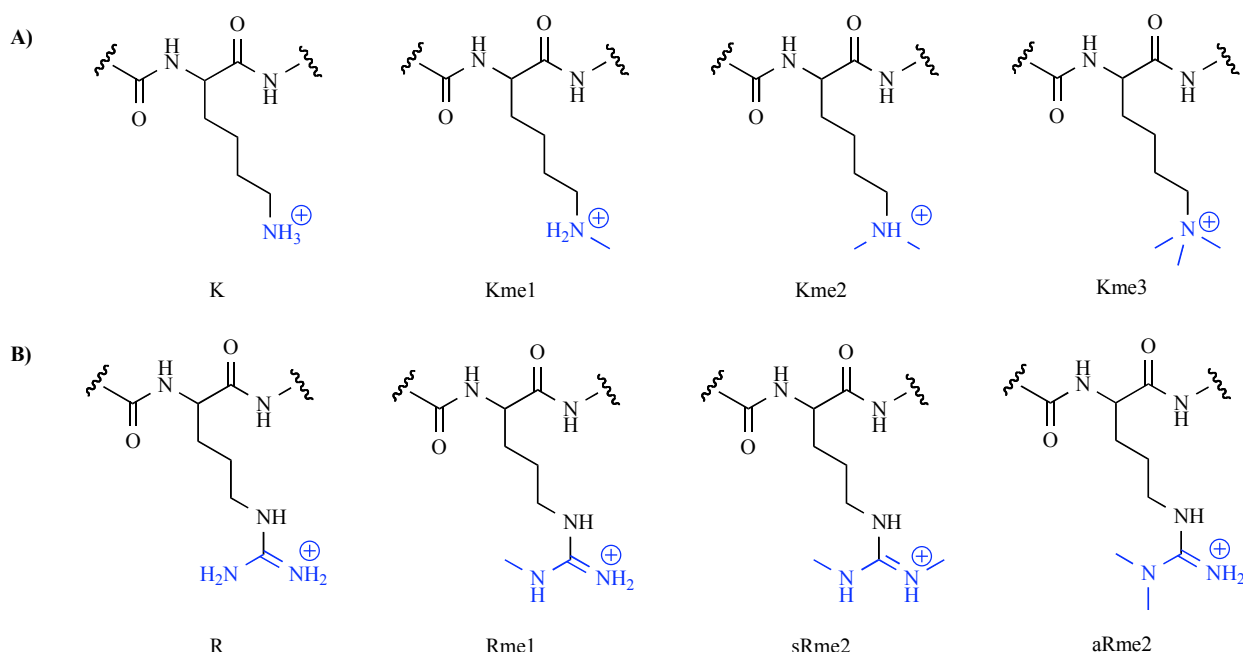


Fig. (1). Different methylation states of lysine (A) and arginine (B).

recent publication analyses the effect of the methylation state on one of the effector proteins (L3MBTL1) by means of molecular dynamics and free energy perturbation techniques combined with biophysical binding data in the context of a small-molecule model system [14]. Gaining a greater understanding of the atomic-level mechanisms by which methyl-lysine recognition occurs will be helpful in understanding far more complex phenomena including how the effector proteins control many biological processes.

The conserved recognition of methyl-lysine marks is largely mediated by the interaction between the methylammonium group and aromatic residues in the protein receptor, which form an aromatic “cage” around the PTM. Such aromatic cages tend to be relatively specific for a certain methylation state, discriminating between PTMs based on differences in size and shape. The binding interaction between the methylammonium and the aromatic cage is largely the result of cation- π interactions, while hydrophobic desolvation effects also have a substantial role. The cation- π interaction is generally thought of as a charge-quadrupole interaction between a positively charged species and an aromatic ring, primarily electrostatic in nature [15, 16]. The importance of cation- π interactions in the context of proteins has been described previously by Burley and Petsko in 1986 [17], and this recognition motif has been seen to be highly conserved in many protein-protein interactions. In the recognition of the lower methylation states, hydrogen bonding and steric exclusion also become increasingly important. Depending on the methylation state, nearby acidic residues in the protein are also known to form salt bridges with the methylated lysine residue, offering an additional stabilizing effect [18]. Based on current understanding, the lower methylation states of lysine (Kme1&2) can be found to bind *via* a cavity-insertion recognition mode whereby the methylammonium group is deeply buried within the protein while neighboring residues in the histone peptide are making few interactions, causing little sequence selectivity to be observed *in vitro*. In

contrast, trimethyl-lysine (Kme3) is predominantly recognized *via* surface-groove recognition whereby the peptide lies along the protein surface enabling surrounding residues and the peptide backbone to form additional interactions with the effector protein, leading to a more sequence selective binding event [12]. Understanding of the different modes of recognition has been and will continue to be significantly advanced with the availability of crystal structures of these domains.

While much attention in this field has been focused on the readers of methylated lysines, arginine methylation has similarly been identified as a key player in the regulation of cellular processes [19-21]. Although our present knowledge of methyl-arginine effector proteins is limited, there is evidence that methyl-arginine serves as a mediator of protein-protein interactions [22]. Similarly to lysine, there is precedence for the stacking of arginine with aromatic residues *via* cation- π interactions [23-25]. Arginine’s ability to bind to aromatic residues is due to its ability to interact *via* a combination of cation- π and π - π stacking interactions, and methylation of arginine is thus expected to magnify this interaction.

Despite a conserved cation- π recognition motif across most methyl-lysine and -arginine binding proteins, the protein readers also belong to distinct families based on other specific characteristics. Consideration of the differences between reader families will aid in the development of selective probes and drugs targeting specific proteins. The recognition of methyl-lysine and -arginine residues generally occurs *via* interaction of a specific sub-domain within the protein. The proteins which are known to contain methyl-lysine binding domains are the plant homeodomain (most commonly referred to as PHD fingers), the Royal Family proteins consisting of Tudor, Agenet, Chromo, PWWP (Proline-Tryptophan-Tryptophan-Proline domains) and MBT (Malignant Brain Tumor) domains, and finally the WD40 repeat

protein [26]. A recent review of the structural biology of the various PTM reader proteins gives an excellent overview of the structural features and subdomains of these proteins [27].

Current drug discovery efforts are largely directed toward the enzymatic proteins which install and remove lysine methylation marks (PTM writers and erasers, respectively) [28]. In contrast, binding proteins for PTM histone marks have only just emerged as valid targets of probe research and drug discovery. For example, Filippakopoulos and co-workers have recently shown that bromodomain, the readers of acetyl-lysine, can be targeted by small molecule probes [29, 30]. The reason methyl-lysine readers have received less attention to date is two-fold. First, the readers of methyl-lysine marks are usually characterized by a low affinity for their respective peptide substrates, making any high-throughput assay difficult. Second, their lack of enzymatic activity has hindered their validation as critical drug targets. Small molecule antagonists of reader domains offer the potential of different *in vivo* efficacy and toxicity as compared to inhibitors of the writer and eraser enzymes [31] and also can contribute greatly to a growing understanding of how small molecules can target protein-protein interactions. This review will focus primarily on the families of methyl-lysine readers and their potential in the field of drug discovery, while the homologous readers of methyl-arginine will be discussed within the related family of lysine reader.

MBT FAMILY

The malignant brain tumor (MBT) domain is known to recognize the lower methylation states of lysine (Kme1 and Kme2) on both histones and other regulatory proteins. The MBT family is comprised of 9 human members, each of which contains MBT subdomains occurring in tandem repeats of 2-4 units (Fig. 2). The MBT domains are often flanked by other subdomains, which in some cases are suggested to assist in dimerization (SPM domain) or support binding to DNA (Zn-finger domain).

The MBT domain itself consists of ca. 100 amino acids, and highly conserved homologs can be found in humans, *Drosophila*, and *C. elegans*. A recent review of the MBT

family highlights its structural features and the cellular functions of each of its members [32]. The interaction between the MBT readers and methylated lysine residues is best described as a cavity-insertion mode [12] of recognition and the available co-crystal structures for five different domains indicate few interactions beyond the methylated lysine residue. A consequence of this localized interaction is that MBT domains are almost entirely non-sequence selective as long as the methylated peptide shows a high isoelectric point [33]. Most of the MBT proteins can be evolutionary linked to one of three *Drosophila* orthologs: dL3MBTL, dSCM (Sex Comb on Midleg, Fig. (2B) shows one human ortholog: SCML2), or the four MBT repeat containing dSFMBT (SCM-related gene containing Four MBT domains) [34].

MBT domains are essential for transcriptional regulation and share an overall conserved binding mechanism. For example, L3MBTL1 has a slight preference for monomethyl-lysine over the dimethyl analog. Its aromatic binding pocket is made up of a tyrosine, phenylalanine, and tryptophan residue with an essential hydrogen bond between the lysine ammonium group and an aspartic acid (D355, Fig. 3A). In contrast, SCML2 and SCMHL1 are the only MBT domains in which the MBT repeat occurs in tandem and exhibits a stronger preference for monomethyl-lysine [35-37]. In these two reader proteins the binding cavity contains a phenylalanine, replacing the tyrosine in L3MBTL1 (Fig. 3B).

Many members of the MBT family and their related biological functions have been studied in detail, however this review will focus on L3MBTL1 and L3MBTL3. The structural biology of L3MBTL1 has been well covered in recent literature [38], providing a valuable starting point for ligand-based drug design. Furthermore, L3MBTL1 has been shown to act as a chromatin lock [39] and to be important for transcriptional repression [33]. This methyl-lysine reader represses the expression of E2F regulated genes, such as the oncogenic and growth related c-myc gene. As various members of the MBT family are not sequence selective, L3MBTL1 has also been shown to bind the tumor suppressor, p53, through recognition of the methylated lysine residue 382 [40]. It has also been suggested that L3MBTL1

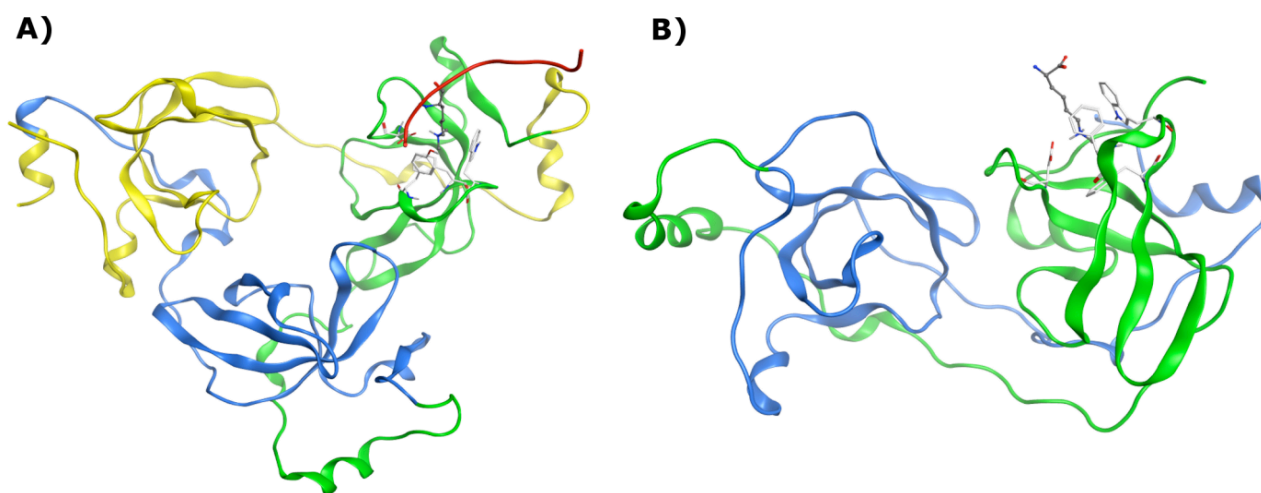


Fig. (2). Example of tandem repeat of MBT domains: **A)** L3MBTL1 bound to H4K20me2 (PDB: 2RJF) and **B)** SCML2 bound to a monomethylated lysine (PDB: 2VYT). Protonated methyl-lysines are displayed in ball and stick model with gray carbon atoms, key binding site residues are displayed in stick model with white carbon atoms.

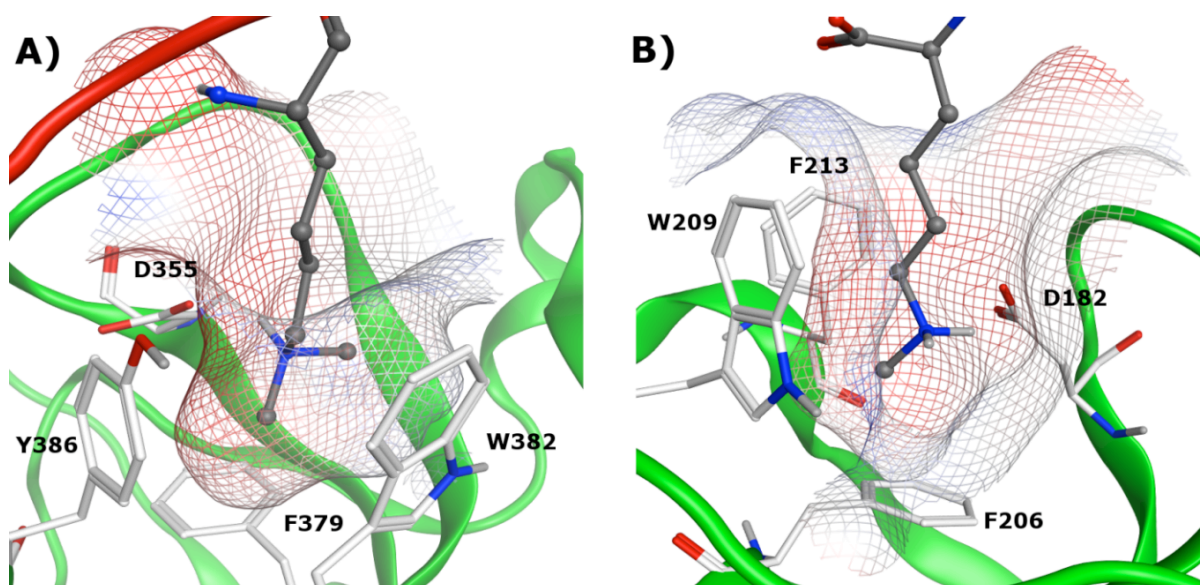


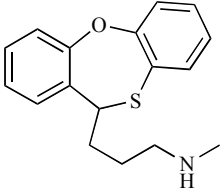
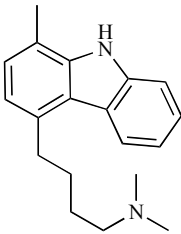
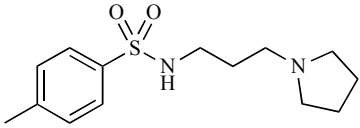
Fig. (3). **A)** Binding cavity of L3MBTL1 bound to H4K20me2 (PDB:2RJF) and **B)** Binding cavity of SCML2 bound to a mono-methylated lysine (PDB: 2VYT). Protonated methyl-lysines are displayed in ball and stick model with gray carbon atoms, key binding site residues are displayed in stick model with white carbon atoms.

might bind to the retinoblastoma (Rb) protein in an analogous fashion, and consequently facilitates repression of c-myc. In addition, in a recent report the Nimer lab has shown that L3MBTL1 positively influences genomic stability [41], while Perna and co-workers have demonstrated the effect of L3MBTL1 on erythroid differentiation [42].

Small molecule ligand discovery for methyl-lysine binding domains is relatively unexplored territory. The first reported virtual screening (VS) study on MBT proteins was carried out by Kireev and co-workers [43]. The iResearch Library (ChemNavigator) which contained more than

50 million procurable compounds was virtually screened for MBT ligands. In this study, two complementary VS approaches were utilized: a substructure search for compounds containing Kme1 and Kme2-‘like’ side chains and a pharmacophore screen followed by docking to search for more structurally remote compounds mimicking the histone peptide interaction. A total of 51 compounds were subsequently purchased and tested against a panel of four MBT-containing proteins (L3MBTL1, L3MBTL3, L3MBTL4 and MBTD1) using an *in vitro* chemiluminescent assay (AlphaScreen) [44]. Nineteen compounds showed specific dose-dependent

Table 1. IC₅₀-Values for Select Small Molecule Ligands of Four MBT Domains as Identified by a Chemiluminescent Assay

Entry	Compound	L3MBTL1 [μ M]	L3MBTL3 [μ M]	L3MBTL4 [μ M]	MBTD1 [μ M]
1		14 \pm 0.7	ND	> 100	> 100
2		21 \pm 2	6 \pm 2	> 100	73 \pm 14
3		17 \pm 0.1	57 \pm 11	> 100	59 \pm 5

protein binding activity and provided initial structure–activity information for lead generation (A selection of these small molecules is shown in Table 1).

More importantly, the first co-crystal structure of L3MBTL1 with a small molecule ligand has recently been published, (Fig. 4, PDB: 3P8H) along with a detailed study of the binding event using medicinal chemistry, mutagenesis and multiple orthogonal assay formats [45]. The nicotinamide ligand is shown to bind in the second domain of L3MBTL1 analogously to the native peptides. The significantly larger and more rigid amine anchor makes a critical interaction with the acidic residue D355 and fills out the binding pocket almost entirely (See Fig. 3A). These studies represent the first steps towards high-quality chemical probes for methyl-lysine binding domains though further improvements in potency, greater selectivity profiling and cell-based evidence of activity and mechanism are yet to be addressed.

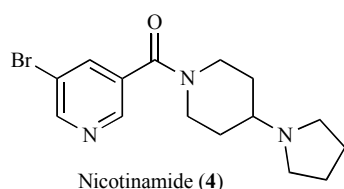


Fig. (4). Nicotinamide ligand (4) shown in the co-crystal structure with L3MBTL1. PDB: 3P8H.

The involvement of MBT domains in differentiation has been seen in similar fashion for L3MBTL3, a close homolog of L3MBTL1. Northcott and co-workers reported the potential involvement of L3MBTL3 in the occurrence of malignant pediatric brain tumors [46]. High resolution single nucleotide polymorphism (SNP) genotyping identified the amplification and deletion of tumor suppressor genes, including homo- and heterozygous deletions of modules of histone lysine methylation including the readers L3MBTL3, L3MBTL2, and SCML2 and the writers GLP (also known as EHMT1) and SMYD4.

Based on recent literature highlighting the significance of L3MBTL1 and L3MBTL3 in oncogenesis, being able to target these proteins directly would serve as an ideal tool for cancer biology, especially as it is unknown if these deregulated readers are actively promoting oncogenesis or mere bystanders [47]. Small molecule antagonists of MBT domain interactions could be instrumental to determine, for instance, the role of L3MBTL3 in the development of medulloblastomas, which are still the leading cause of cancer-related deaths in children.

PHD FINGERS

The plant homeodomain, also referred to as PHD finger, is a structural motif consisting of approximately 50 to 80 amino acids. The PHD finger family is one of the largest and most diverse of the methyl-lysine readers, and within this family two general classes have been identified based on their preferred binding partner: the first group binds di- and trimethylated lysine residues whereas the second group interacts with unmethylated lysine residues. PHD fingers which bind unmodified lysine residues apparently organize their respective binding pockets only in the presence of their

binding partner, while the binders of di- and trimethyl-lysine are known to have a preorganized binding pocket, similar to the previously mentioned MBT domains [48]. Some of the PHD fingers are good examples of surface-groove recognition readers which was discussed above. The extended interaction of the methylated lysine and neighboring residues leads to selectivity for a specific PTM in those cases. For drug design these additional interactions could also prove crucial in addressing the questions of selectivity and potency. It is also worth noting that for any probe design or drug discovery efforts targeting the readers of trimethyl-lysine such as the PHD fingers or other domains discussed below, an uncharged substitute for the trimethylammonium group is required to achieve cell-permeability.

Of the 81 known members of the family, a significant number have structural data available in the form of crystal structures (13) and NMR structures (14), both of which will be of great value in future efforts focused on the design of chemical probes. The ability of PHD fingers to bind both unmethylated and methylated lysine residues demonstrates the diversity among this family, and it is worthwhile to highlight distinct members of the PHD family to illustrate their structural biology (Fig. 5) and function.

PHF21A (BHC80) specifically interacts with unmethylated H3K4 (H3K4me0) (Fig. 5A) [49]. Unlike most other reader proteins where the binding pockets feature an aromatic cage, there are no aromatic residues inside the binding pocket of PHF21A (Fig. 5A). The crystal structure revealed that the specificity for H3K4me0 is achieved through the hydrogen bond formed between the lysine ϵ -amine and D489 of the binding pocket, and further stabilized by an additional hydrogen bond between the amine and the E488 backbone. The structure also suggests that steric exclusion of the methyl group prevents methylated H3K4 from binding to this pocket. Knockdown of PHF21A by RNA inhibition results in the de-repression of LSD1 target genes, and this repression is restored by the reintroduction of wild-type PHF21A but not by the D489A mutant, which does not bind H3K4. These findings highlight the importance of PHF21A in gene repression, and more interestingly, suggests unmethylated lysine residues are subject to specific reader interactions in the absence of PTM.

The importance of PHD fingers in human disease was recently outlined in a review by Baker and co-workers [50]. In many cases, PHD fingers are linked to disease as a consequence of mutants or translocations of the native proteins. In such cases, drug discovery efforts focused towards such mutant proteins rather than the wildtype proteins would likely be most effective. However, a few examples are known where PHD fingers are associated with human disease and could be targeted directly. For example, Wang and co-workers have reported that a fusion protein containing a PHD finger (PHF23) and Nucleoporin (NUP98) showed all the characteristics of a potent oncoprotein whose function was dependent on binding to H3K4me3 [51]. The phenotypic consequences of this mutation included arrested haematopoietic differentiation and acute myeloid leukemia. PHF23 has very high sequence homology with PHF13 (Fig. 5B), for which a crystal structure has been solved.

Besides the potential to combat cancer in innovative ways, the readers of methyl-lysine residues have also been

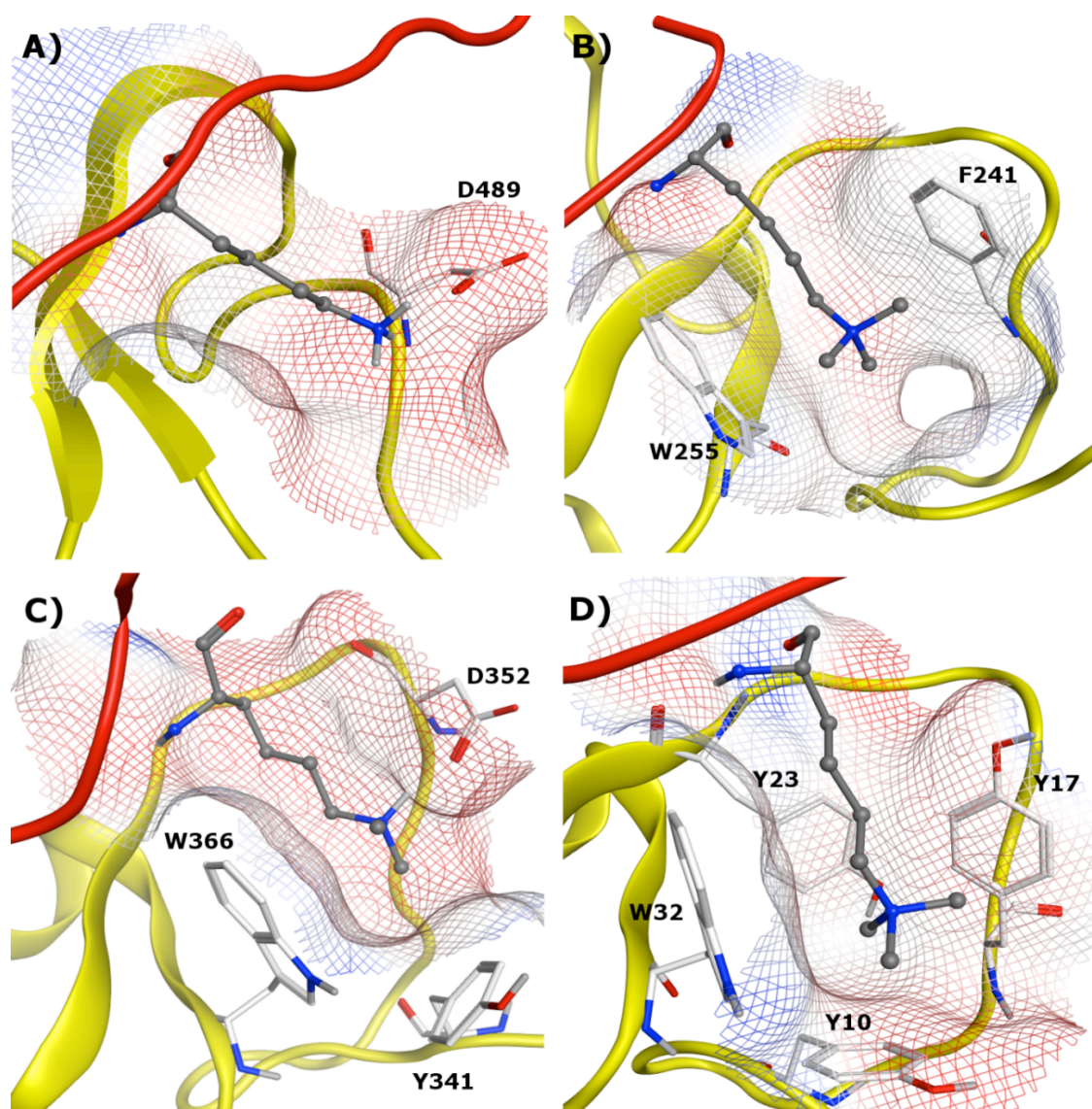


Fig. (5). Binding pockets of four representative PHD fingers: **A)** PHF21A (BHC80) bound to unmethylated H3K4 (PDB: 2PUY). **B)** PHF13 bound to H3K4me3 (PDB: 3O7A). **C)** PYGO1 bound to H3K4me2 (PDB: 2VPE). **D)** BPTF bound to H3K4me3 (PDB: 2F6J). In all four structures, PHD domains are shown in yellow ribbon and histone tails are shown in red ribbon. Protonated methyl-lysines (unmethylated H3K4 in 5A) and trimethyl-lysines are displayed in ball and stick model with gray carbon atoms. Key binding site residues of the PHD fingers are displayed in stick model with white carbon atoms.

shown to play a role in differentiation and stem cell self-renewal. Targeting these proteins may therefore open new avenues for the generation and maintenance of stem cells and advance the field of regenerative medicine. Walker and co-workers have recently reported that the interaction between polycomb-like protein 2 (PCL2) and the polycomb repressive complex 2 (PRC2) is important for de-differentiation and self-renewal [52]. Interestingly enough, PCL2 contains a Tudor domain (discussed below) and two PHD fingers which are necessary to bind H3K27me3 and in turn direct PRC2 function to specific targets.

TUDOR DOMAINS

Tudor domains belong to the Royal superfamily of methyl-lysine effector proteins, and consist of structurally diverse proteins which display a range of recognition motifs, interacting with both higher and lower lysine methylation

states. There are currently close to 40 known Tudor containing proteins, with 12 available crystal structures [53]. Importantly, it has been reported that the Tudor family of proteins are closely linked to gametogenesis, in both *Drosophila* and mice, while also playing roles in various piRNA pathways [54]. As there is not a complete understanding of the role of Tudor domains as methyl-lysine and -arginine readers, the development of small molecule modulators of these protein-protein interactions would serve as a valuable tool in developing a more thorough understanding of the role of Tudor domains in both disease and development.

Tudor domains are characterized by a bent antiparallel β -barrel, with conserved residues stabilizing the structure through formation of a hydrophobic core and an overall negatively charged surface [55]. Tudor proteins which recognize methyl-lysine are generally classified as tandem or

double tudor domains, while a single Tudor domain methyl-lysine reader has yet to be identified. JMJD2A is a well known double Tudor domain which functions as both a demethylase and methyl-lysine binding protein (Fig. 6A). The reader contains an interdigitated folding of two individual Tudor domains, linked by two shared β -strands. It is this interleaved, bilobal topology of the two domains which is required to form an appropriate binding pocket to interact with methylated histone H3K4 and H4K20 [56]. Two aromatic residues from the second tudor sequence and one from the first tudor sequence generate an aromatic cage, which in conjunction with a nearby aspartate residue form a binding pocket for trimethyllysine. In contrast to the double Tudor domains of JMJD2A, mammalian p53-binding protein (53BP1) has been shown to recognize the lower lysine methylation states of both p53 and H4K20 [57, 58]. The ability of 53BP1 to bind both H4K20me2 and p53K382me2 is important as it facilitates p53 recruitment to DNA damage sites, where the H4K20me2 modification is prevalent, thereby promoting DNA double-strand break repair [59]. The structure of 53BP1 differs appreciably from that of JMJD2A despite significant sequence homology; 53BP1 consists of two independently folded tudor domains, of which the first is primarily involved in methyl lysine recognition assisted by the second (Fig. 6B). The specificity of 53BP1 for Kme1 and Kme2 is the consequence of both an intermolecular hydrogen bond between the mono- or dimethylammonium group and an aspartic acid residue located in the central binding pocket and the fact that it is apparently not large enough to accommodate a trimethyl-lysine mark [60]. In addition, 53BP1 is shown to recognize a neighboring basic residue such as an arginine (H4R19) (Fig. 6B) or a lysine (p53K381) in a second aromatic pocket.

Although the characterization of Tudor domains as methyl-arginine readers is less well documented, there is substantial evidence that the SMN (Survival of Motor Neuron) Tudor domain, which is linked to spinal muscular atrophy, recognizes the arginine-glycine rich C-terminal tails of spliceosomal Sm proteins and that this binding event is me-

diated by symmetrical dimethylation of arginine side chains [61, 62]. It is proposed that this interaction is facilitated by the positioning of a symmetrical dimethylarginine side chain near a cluster of conserved aromatic residues, forming a typical cage-like mode of recognition. In another case, it has been demonstrated that members of the Tudor family associate with PIWI (P-element-induced wimpy testis) specifically through sRme2 [54, 63]. More recently, it was shown that Tudor protein human SND1 (staphylococcal nuclease domain-containing 1) binds PIWIL1 in an arginine methylation dependent manner, suggesting a previously undescribed function for SND1 in regulating piRNA pathways [63]. Crystal structures revealed that the intact SND1 extended Tudor domain forms a wide and negatively charged binding groove which can appropriately accommodate sRme2 peptides from PIWIL1 in different orientations [63].

CHROMODOMAINS

The chromodomain is a highly conserved family of methyl-lysine reader proteins found in both plants and animals, consisting of 40-50 amino acids and spanning 34 known members [53]. One of the earliest and best-known protein-protein interactions induced by methyl-lysine recognition is the binding of H3K9me3 to the HP1 (heterochromatin-associated protein 1) chromodomain, which in turn results in gene silencing. HP1 and other members of the chromodomain family are generally known to consist of an N-terminal three-stranded anti-parallel β -sheet which folds against a C-terminal α -helix [64]. For HP1, the binding affinities have been reported to be in the low micromolar range for both H3K9me3 and H3K9me2 [65, 66]. The aromatic binding cage is made up of three residues which form a conserved aromatic pocket into which the methylammonium group inserts itself (see Fig. 7A for human homolog of HP1). Mutation of any of these aromatic residues drastically reduces affinity for the methylated histone tail. Furthermore, residues 5-10 of the histone tail (QTARK₉S) interact with the chromodomain by an induced-fit sandwiching between terminal β -strands, completing a five-stranded antiparallel β -sheet [65]. Mutation studies of residues in both the peptide

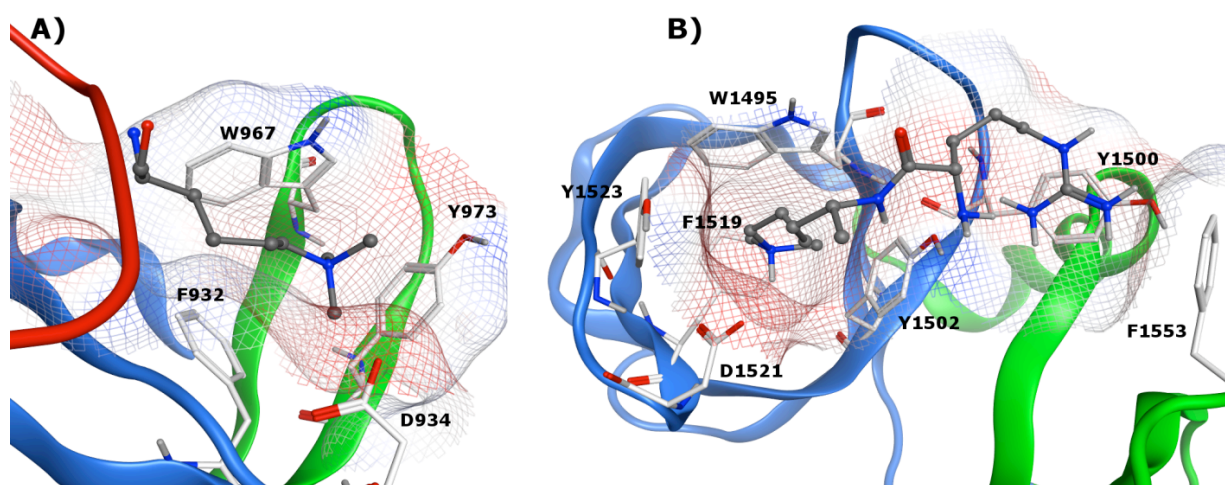


Fig. (6). A) Double tudor domain JMJD2A with the aromatic cavity bound to H3K9me2 (PDB: 2GFA) B) Binding pocket of 53BP1 tandem tudor domain bound to H4K20me2 (PDB: 2IG0). In both structures, the two tudor domains are shown in blue and green, respectively. The trimethyl-lysine in A and the protonated dimethyl-lysine and the neighboring H4R19 residue in B are displayed in ball and stick model with gray carbon atoms. Key binding site residues are displayed in stick model with white carbon atoms.

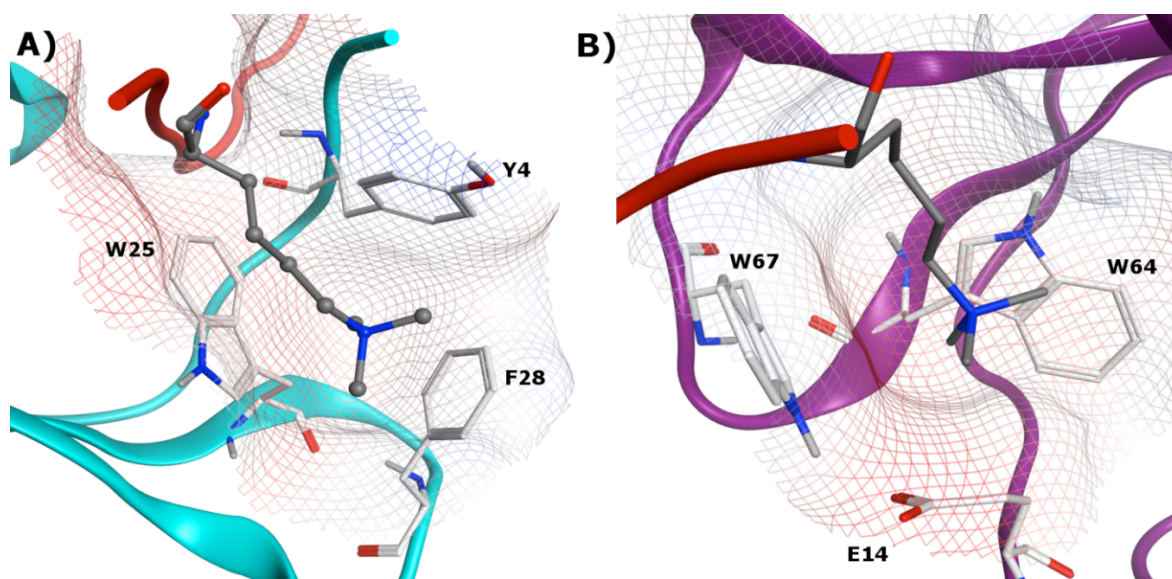


Fig. (7). **A)** Aromatic binding pocket of CBX5 (human HP1 α) bound to H3K9me3 (PDB: 3FDT) **B)** Chromodomain CHD1 binding pocket with H3K4me3 (PDB: 2B2W). In both structures, the trimethylated lysines are displayed in ball and stick model with gray carbon atoms, key binding site residues are displayed in stick model with white carbon atoms.

and protein have confirmed the contribution of intermolecular contacts along the extended surface groove to both binding affinity and selectivity [67].

In comparison to HP1, methyl-lysine recognition by chromobox (CBX) proteins (for example, Polycomb) involve fewer contacts with the residues surrounding the methyl-lysine [68]. While this is often associated with a decrease in sequence selectivity, it can be envisioned that such non-sequence selective recognition domains are more amenable to inhibition by small molecules due to their limited binding sites. Furthermore, tandem chromodomains have been reported such as CHD (chromo helicase DNA-binding) proteins in which the two chromodomains are bridged by a two-helix linker to form a continuous surface. The human CHD1 double chromodomain, for example, interacts with H3K4 methylation sites, a hallmark of active chromatin. The two CHD1 chromodomains are seen to cooperatively interact with one methylated H3 tail at the chromodomain junction, using only two aromatic residues for methyl-lysine recognition in contrast to the 3-residue aromatic cage of HP1 (Fig. 7B) [69].

While ongoing research is helping to elucidate the binding sites and interacting proteins of various chromodomain-containing proteins, it is also becoming increasingly clear that mutations in such domains are closely linked to a variety of disorders. In 2004, Vissers and co-workers identified that heterozygous mutations in Chromodomain Helicase DNA-binding protein 7 (CHD7) cause the CHARGE syndrome [70, 71] (Coloboma of the eye, Heart defects, Atresia of the choanae, severe Retardation of growth and development, Genital abnormalities, and Ear abnormalities), a disease with an estimated incidence of approximately 1 in 10,000 newborns. In a recent study combining Chromatin Immunoprecipitation with microarray technology (ChIP-chip), the role of CHD7 in gene expression was identified. CHD7 was shown to bind to mono- and dimethylated histone H3K4 in enhancer regions of numerous genes in a highly cell type-

dependent manner. It was observed that CHD7 localization sites change concomitantly with H3K4me patterns during cell differentiation, indicating that the H3K4 methylation mark defines lineage-specific association of CHD7 with specific sites on chromatin [72]. A selective small molecule ligand of CHD7 could therefore serve as a tool to elucidate the biology behind CHARGE syndrome.

PWWP DOMAINS

The proline-tryptophan-tryptophan-proline (PWWP) motif is a structural domain which recognizes various methylation states of lysine residues and can be found in both proteins as well as enzymes involved in chromatin biology. The PWWP domain of Brpf1 was recently characterized by both NMR and crystallization studies, elucidating both the apo form of the methyl-lysine reader as well as the protein in complex with the H3K36me3 peptide (Fig. 8) [73].

The PWWP domain is a member of the Royal family and is instrumental for the assembly of a complex involved in acute myeloid and mixed-lineage leukemia (ALL and MLL, respectively) after chromosomal translocations [74]. As mentioned before with regards to the PHD family, targeting such oncogenic fusion proteins could prove significant for drug discovery (Fig. 8) [29].

WD40 REPEAT

The WD40 repeat, also known as the beta-transducin repeat, is a protein domain found in numerous readers and enzymes. The first WD40 repeat reported to bind histone modifications is the WDR5 domain found in the MLL/SET1 methyltransferase complex, which binds di- or trimethylation states of H3K4 [75]. Recently, a second member of the WD40 repeat, EED, was reported to associate with and regulate the activity and specificity of the polycomb repressive complex (PRC2) [76]. Xu and co-workers demonstrate that the reader protein directly modulates the methyltransferase activity through its binding of various methylated peptides.

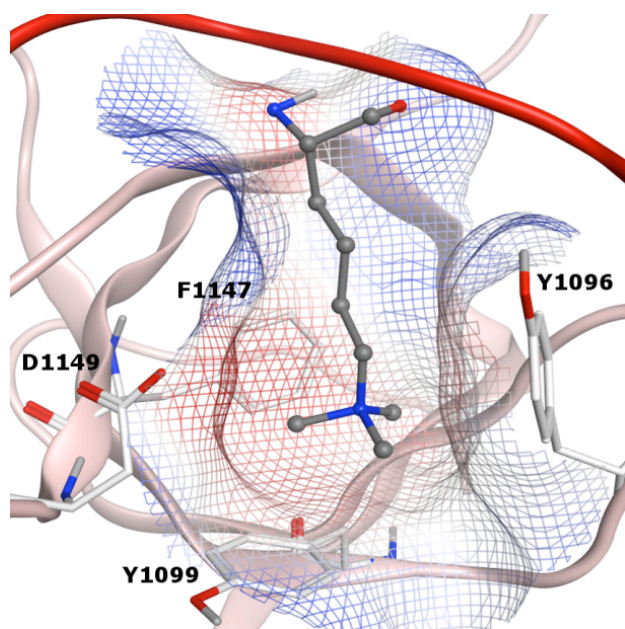


Fig. (8). PWWD domain Brpf1 Binding Pocket with H3K36me3 (PDB: 2X4Y). The trimethylated lysine is displayed in ball and stick model with gray carbon atoms, key binding site residues are displayed in stick model with white carbon atoms.

By using different trimethylated peptides the authors show that H3K27me3 stimulates the transferase activity relative to other trimethylated peptides. Interestingly, EED itself can become methylated by PRC2 when H1K26Me3 is the ligand (Fig. 9).

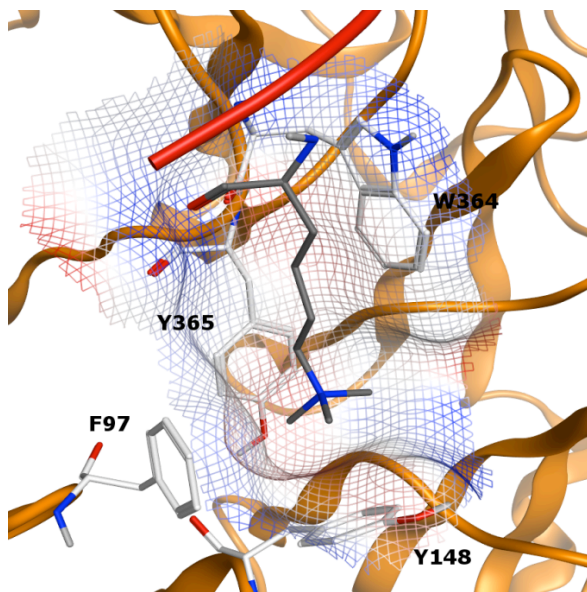


Fig. (9). EED as an example of a WD40 domain binding to H3K27me3 (PDB: 3JZG). The trimethylated lysine is displayed in ball and stick model with gray carbon atoms, key binding site residues are displayed in stick model with white carbon atoms.

DRUG DISCOVERY ENABLED BY CHEMICAL PROBES

The readers of PTMs associated with chromatin regulation currently represent unexplored territory for drug discov-

ery. In order for these protein classes to become part of the druggable genome [77] both their tractability and validity need to be experimentally verified. Recent reports of the discovery of potent and selective, cellularly active, small molecule antagonists of acetyl-lysine recognition [29, 30] targeting the bromodomain BET subfamily, provide significant encouragement that both these issues can be addressed for at least some of the readers of the histone code. Our strategy is to take a protein-family approach [77] toward the therapeutically unbiased discovery of high quality chemical probes for readers of methyl-lysine [78, 79]. Initial results of ligand discovery *via* experimental and virtual screening [43, 44, 80] have confirmed some of the anticipated challenges in terms of potency for these weakly interacting domains, but also show promise for selectivity even within related MBT domain containing proteins (Table 1). By taking a broad and unbiased approach to probe discovery, the chances for finding potency enhancing features in ligands is increased *via* testing of each ligand hypothesis versus a large number of functionally homologous, but structurally distinct binding sites (as reviewed above). In addition, this approach naturally annotates ligand selectivity and creates structure activity relationships across methyl-lysine reader families. High quality probes for methyl-lysine binders will have utility in exploring the biology of this large and diverse family and will lay the foundation for drug discovery as validated and tractable targets are revealed.

CONFLICT OF INTEREST

None declared.

ACKNOWLEDGEMENTS

This work is supported by NIH grant number RC1GM090732. Post-doctoral fellowships for JMH, LAI and CG from the Carolina Partnership are gratefully acknowledged. The authors also acknowledge an enabling collaboration with the Structural Genomics Consortium (SGC).

REFERENCES

- [1] Bhaumik SR, Smith E, Shilatifard A. Covalent modifications of histones during development and disease pathogenesis. *Nat Struct Mol Biol* 2007; 14: 1008-16.
- [2] Wang GG, Allis CD, Chi P. Chromatin remodeling and cancer, Part I: Covalent histone modifications. *Trends Mol Med* 2007; 13: 363-72.
- [3] Jenuwein T, Allis CD. Translating the histone code. *Science* 2001; 293: 1074-80.
- [4] Strahl BD, Allis CD. The language of covalent histone modifications. *Nature* 2000; 403: 41-5.
- [5] Zhang Y, Reinberg D. Transcription regulation by histone methylation: interplay between different covalent modifications of the core histone tails. *Genes Dev* 2001; 15: 2343-60.
- [6] Kouzarides T. Chromatin modifications and their function. *Cell* 2007; 128: 693-705.
- [7] Martin C, Zhang Y. The diverse functions of histone lysine methylation. *Nat Rev Mol Cell Biol* 2005; 6: 838-49.
- [8] Seet BT, Dikic I, Zhou MM, Pawson T. Reading protein modifications with interaction domains. *Nat Rev Mol Cell Biol* 2006; 7: 473-83.
- [9] Ruthenburg AJ, Allis CD, Wysocka J. Methylation of lysine 4 on histone H3: intricacy of writing and reading a single epigenetic mark. *Mol Cell* 2007; 25: 15-30.
- [10] Bottomley MJ. Structures of protein domains that create or recognize histone modifications. *EMBO Rep* 2004; 5: 464-9.
- [11] Daniel JA, Pray-Grant MG, Grant PA. Effector proteins for methylated histones: an expanding family. *Cell Cycle* 2005; 4: 919-26.

- [12] Taverna SD, Li H, Ruthenburg AJ, Allis CD, Patel DJ. How chromatin-binding modules interpret histone modifications: lessons from professional pocket pickers. *Nat Struct Mol Biol* 2007; 14: 1025-40.
- [13] Simple Modular Architecture Research Tool (SMART) Database. 2010.
- [14] Gao C, Herold JM, Kireev D, Wigle T, Norris JL, Frye S. Biophysical Probes Reveal a "Compromise" Nature of the Methyl-lysine Binding Pocket in L3MBTL1. *J Am Chem Soc* 2011; 133: 5357-62.
- [15] Ma JC, Dougherty DA. The Cation- π Interaction. *Chem Rev* 1997; 97: 1303-24.
- [16] Gallivan JP, Dougherty DA. Cation- π interactions in structural biology. *Proc Natl Acad Sci USA* 1999; 96: 9459-64.
- [17] Burley SK, Petsko GA. Amino-aromatic interactions in proteins. *FEBS Lett* 1986; 203: 139-43.
- [18] Adams-Cioaba MA, Min J. Structure and function of histone methylation binding proteins. *Biochem Cell Biol* 2009; 87: 93-105.
- [19] McBride AE, Silver PA. State of the arg: protein methylation at arginine comes of age. *Cell* 2001; 106: 5-8.
- [20] Lee DY, Teyssier C, Strahl BD, Stallcup MR. Role of protein methylation in regulation of transcription. *Endocr Rev* 2005; 26: 147-70.
- [21] Bedford MT, Richard S. Arginine methylation an emerging regulator of protein function. *Mol Cell* 2005; 18: 263-72.
- [22] Cosgrove MS, Boeke JD, Wolberger C. Regulated nucleosome mobility and the histone code. *Nat Struct Mol Biol* 2004; 11: 1037-43.
- [23] Burley SK, Petsko GA. Amino-aromatic interactions in proteins. *FEBS Lett* 1986; 203: 139-43.
- [24] Flocco MM, Mowbray SL. Planar stacking interactions of arginine and aromatic side-chains in proteins. *J Mol Biol* 1994; 235: 709-17.
- [25] Mitchell JB, Nandi CL, McDonald IK, Thornton JM, Price SL. Amino/aromatic interactions in proteins: is the evidence stacked against hydrogen bonding? *J Mol Biol* 1994; 239: 315-31.
- [26] Maurer-Stroh S, Dickens NJ, Hughes-Davies L, Kouzarides T, Eisenhaber F, Ponting CP. The Tudor domain 'Royal Family': Tudor, plant Agenet, Chromo, PWWP and MBT domains. *Trends Biochem Sci* 2003; 28: 69-74.
- [27] Yap KL, Zhou MM. Keeping it in the family: diverse histone recognition by conserved structural folds. *Crit Rev Biochem Mol Biol* 2010; 45(6): 488-505.
- [28] Copeland RA, Olhava EJ, Scott MP. Targeting epigenetic enzymes for drug discovery. *Curr Opin Chem Biol* 2010; 14: 505-10.
- [29] Filippakopoulos P, Qi J, Picaud S, *et al.* Selective inhibition of BET bromodomains. *Nature* 2010; 468(7327): 1067-73.
- [30] Nicodeme E, Jeffrey KL, Schaefer U, *et al.* Suppression of inflammation by a synthetic histone mimic. *Nature* 2010; 468: 1119-23.
- [31] Taverna SD, Cole PA. Drug discovery: Reader's block. *Nature* 2010; 468: 1050-1.
- [32] Bonasio R, Lecona E, Reinberg D. MBT domain proteins in development and disease. *Semin Cell Dev Biol* 2010; 21: 221-30.
- [33] Kalakonda N, Fischle W, Boccuni P, *et al.* Histone H4 lysine 20 monomethylation promotes transcriptional repression by L3MBTL1. *Oncogene* 2008; 27: 4293-304.
- [34] Klymenko T, Papp B, Fischle W, *et al.* A Polycomb group protein complex with sequence-specific DNA-binding and selective methyl-lysine-binding activities. *Genes Dev* 2006; 20: 1110-22.
- [35] Montini E, Buchner G, Spalluto C, *et al.* Identification of SCML2, a second human gene homologous to the Drosophila sex comb on midleg (Scm): A new gene cluster on Xp22. *Genomics* 1999; 58: 65-72.
- [36] Sathyamurthy A, Allen MD, Murzin AG, Bycroft M. Crystal structure of the malignant brain tumor (MBT) repeats in Sex Comb on Midleg-like 2 (SCML2). *J Biol Chem* 2003; 278: 46968-73.
- [37] Santiveri CM, Lechtenberg BC, Allen MD, Sathyamurthy A, Jaulent AM, Freund SM, *et al.* The malignant brain tumor repeats of human SCML2 bind to peptides containing monomethylated lysine. *J Mol Biol* 2008; 382: 1107-12.
- [38] Min J, Allali-Hassani A, Nady N, *et al.* L3MBTL1 recognition of mono- and dimethylated histones. *Nat Struct Mol Biol* 2007; 14: 1229-30.
- [39] Trojer P, Li G, Sims RJ, *et al.* L3MBTL1, a histone-methylation-dependent chromatin lock. *Cell* 2007; 129: 915-28.
- [40] West LE, Roy S, Lachmi-Weiner K, *et al.* The MBT repeats of L3MBTL1 link set8 mediated p53 methylation at lysine 382 to target gene repression. *J Biol Chem* 2010; 285: 37725-32.
- [41] Gurvich N, Perna F, Farina A, *et al.* L3MBTL1 polycomb protein, a candidate tumor suppressor in del(20q12) myeloid disorders, is essential for genome stability. *Proc Natl Acad Sci USA* 2010; 107: 22552-7.
- [42] Perna F, Gurvich N, Hoya-Arias R, *et al.* Depletion of L3MBTL1 promotes the erythroid differentiation of human hematopoietic progenitor cells: possible role in 20q- polycythemia vera. *Blood* 2010; 116: 2812-21.
- [43] Kireev D, Wigle TJ, Norris-Drouin J, Herold JM, Janzen WP, Frye SV. Identification of Non-Peptide Malignant Brain Tumor (MBT) Repeat Antagonists by Virtual Screening of Commercially Available Compounds. *J Med Chem* 2010; 53: 7625-31.
- [44] Wigle TJ, Herold JM, Senisterra GA, *et al.* Screening for inhibitors of low-affinity epigenetic peptide-protein interactions: an AlphaScreen-based assay for antagonists of methyl-lysine binding proteins. *J Biomol Screen* 2010; 15: 62-71.
- [45] Herold JM, Wigle TJ, Norris JL, *et al.* Small-molecule ligands of methyl-lysine binding proteins. *J Med Chem* 2011; 54: 2504-11.
- [46] Northcott PA, Nakahara Y, Wu X, *et al.* Multiple recurrent genetic events converge on control of histone lysine methylation in medulloblastoma. *Nat Genet* 2009; 41: 465-72.
- [47] Chi P, Allis CD, Wang GG. Covalent histone modifications--miswritten, misinterpreted and mis-erased in human cancers. *Nat Rev Cancer* 2010; 10: 457-69.
- [48] Wang Z, Song J, Milne TA, *et al.* Pro isomerization in MLL1 PHD3-bromo cassette connects H3K4me readout to Cyp33 and HDAC-mediated repression. *Cell* 2010; 141: 1183-94.
- [49] Lan F, Collins RE, De Cegli R, *et al.* Recognition of unmethylated histone H3 lysine 4 links BHC80 to LSD1-mediated gene repression. *Nature* 2007; 448: 718-22.
- [50] Baker LA, Allis CD, Wang GG. PHD fingers in human diseases: disorders arising from misinterpreting epigenetic marks. *Mutat Res* 2008; 647: 3-12.
- [51] Wang GG, Song J, Wang Z, *et al.* Haematopoietic malignancies caused by dysregulation of a chromatin-binding PHD finger. *Nature* 2009; 459: 847-51.
- [52] Walker E, Chang WY, Hunkapiller J, *et al.* Polycomb-like 2 associates with PRC2 and regulates transcriptional networks during mouse embryonic stem cell self-renewal and differentiation. *Cell Stem Cell* 2010; 6: 153-66.
- [53] Structural Genomics Consortium (SGC). 2011; Available from: www.thesgc.org.
- [54] Siomi MC, Mannen T, Siomi H. How does the royal family of Tudor rule the PIWI-interacting RNA pathway? *Genes Dev* 2010; 24: 636-46.
- [55] Selenko P, Sprangers R, Stier G, Buhler D, Fischer U, Sattler M. SMN tudor domain structure and its interaction with the Sm proteins. *Nat Struct Biol* 2001; 8: 27-31.
- [56] Huang Y, Fang J, Bedford MT, Zhang Y, Xu RM. Recognition of histone H3 lysine-4 methylation by the double tudor domain of JMJD2A. *Science* 2006; 312: 748-51.
- [57] Sanders SL, Portoso M, Mata J, Bahler J, Allshire RC, Kouzarides T. Methylation of histone H4 lysine 20 controls recruitment of Crb2 to sites of DNA damage. *Cell* 2004; 119: 603-14.
- [58] Wang B, Matsuoka S, Carpenter PB, Elledge SJ. 53BP1, a mediator of the DNA damage checkpoint. *Science* 2002; 298: 1435-8.
- [59] Roy S, Musselman CA, Kachirskaja I, *et al.* Structural insight into p53 recognition by the 53BP1 tandem Tudor domain. *J Mol Biol* 2010; 398: 489-96.
- [60] Botuyan MV, Lee J, Ward IM, *et al.* Structural basis for the methylation state-specific recognition of histone H4-K20 by 53BP1 and Crb2 in DNA repair. *Cell* 2006; 127: 1361-73.
- [61] Sprangers R, Groves MR, Sinning I, Sattler M. High-resolution X-ray and NMR structures of the SMN Tudor domain: conformational variation in the binding site for symmetrically dimethylated arginine residues. *J Mol Biol* 2003; 327: 507-20.
- [62] Cote J, Richard S. Tudor domains bind symmetrical dimethylated arginines. *J Biol Chem* 2005; 280: 28476-83.
- [63] Liu K, Chen C, Guo Y, *et al.* Structural basis for recognition of arginine methylated Piwi proteins by the extended Tudor domain. *Proc Natl Acad Sci USA* 2010; 107: 18398-403.

- [64] Ball LJ, Murzina NV, Broadhurst RW, *et al.* Structure of the chromatin binding (chromo) domain from mouse modifier protein 1. *EMBO J* 1997; 16: 2473-81.
- [65] Jacobs SA, Khorasanizadeh S. Structure of HP1 chromodomain bound to a lysine 9-methylated histone H3 tail. *Science* 2002; 295: 2080-3.
- [66] Hughes RM, Wiggins KR, Khorasanizadeh S, Waters ML. Recognition of trimethyllysine by a chromodomain is not driven by the hydrophobic effect. *Proc Natl Acad Sci USA* 2007; 104: 11184-8.
- [67] Nielsen PR, Nietlispach D, Mott HR, *et al.* Structure of the HP1 chromodomain bound to histone H3 methylated at lysine 9. *Nature* 2002; 416: 103-7.
- [68] Fischle W, Wang Y, Jacobs SA, Kim Y, Allis CD, Khorasanizadeh S. Molecular basis for the discrimination of repressive methyl-lysine marks in histone H3 by Polycomb and HP1 chromodomains. *Genes Dev* 2003; 17: 1870-81.
- [69] Flanagan JF, Mi LZ, Chruszcz M, *et al.* Double chromodomains cooperate to recognize the methylated histone H3 tail. *Nature* 2005; 438: 1181-5.
- [70] Pagon RA, Graham JM, Zonana J, Yong SL. Coloboma, congenital heart disease, and choanal atresia with multiple anomalies: CHARGE association. *J Pediatr* 1981; 99: 223-7.
- [71] Vissers LE, van Ravenswaaij CM, Admiraal R, Hurst JA, de Vries BB, Janssen IM, *et al.* Mutations in a new member of the chromodomain gene family cause CHARGE syndrome. *Nat Genet* 2004; 36: 955-7.
- [72] Schnetz MP, Bartels CF, Shastri K, *et al.* Genomic distribution of CHD7 on chromatin tracks H3K4 methylation patterns. *Genome Res* 2009; 19: 590-601.
- [73] Vezzoli A, Bonadies N, Allen MD, *et al.* Molecular basis of histone H3K36me3 recognition by the PWWP domain of Brpf1. *Nat Struct Mol Biol* 2010; 17: 617-9.
- [74] Yokoyama A, Cleary ML. Menin critically links MLL proteins with LEDGF on cancer-associated target genes. *Cancer Cell* 2008; 14: 36-46.
- [75] Wysocka J, Swigut T, Milne TA, *et al.* WDR5 associates with histone H3 methylated at K4 and is essential for H3 K4 methylation and vertebrate development. *Cell* 2005; 121: 859-72.
- [76] Xu C, Bian C, Yang W, *et al.* Binding of different histone marks differentially regulates the activity and specificity of polycomb repressive complex 2 (PRC2). *Proc Natl Acad Sci U S A* 2010; 107: 19266-71.
- [77] Hopkins AL, Groom CR. The druggable genome. *Nat Rev Drug Discov* 2002; 1: 727-30.
- [78] Frye SV, Heightman T, Jin J. Targeting Methyl Lysine. In: Macor EM, Ed. *Annual Reports Medicinal Chemistry*. USA: Academic Press 2010; pp. 329-43.
- [79] Frye SV. The art of the chemical probe. *Nat Chem Biol* 2010; 6: 159-61.
- [80] Campagna-Slater V, Schapira M. Finding inspiration in the protein data bank to chemically antagonize readers of the histone code. *Mol Inf* 2010; 29: 322-31.

Received: January 26, 2011

Revised: February 22, 2011

Accepted: April 25, 2011

© Herold *et al.*; Licensee Bentham Open.

This is an open access article licensed under the terms of the Creative Commons Attribution Non-Commercial License (<http://creativecommons.org/licenses/by-nc/3.0/>) which permits unrestricted, non-commercial use, distribution and reproduction in any medium, provided the work is properly cited.