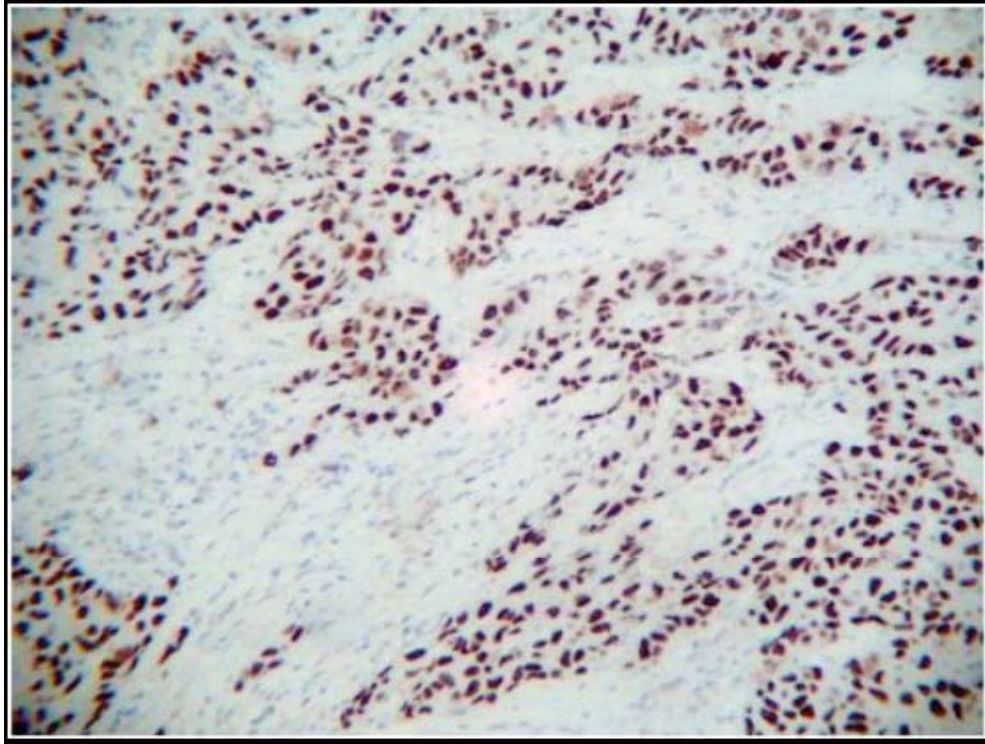
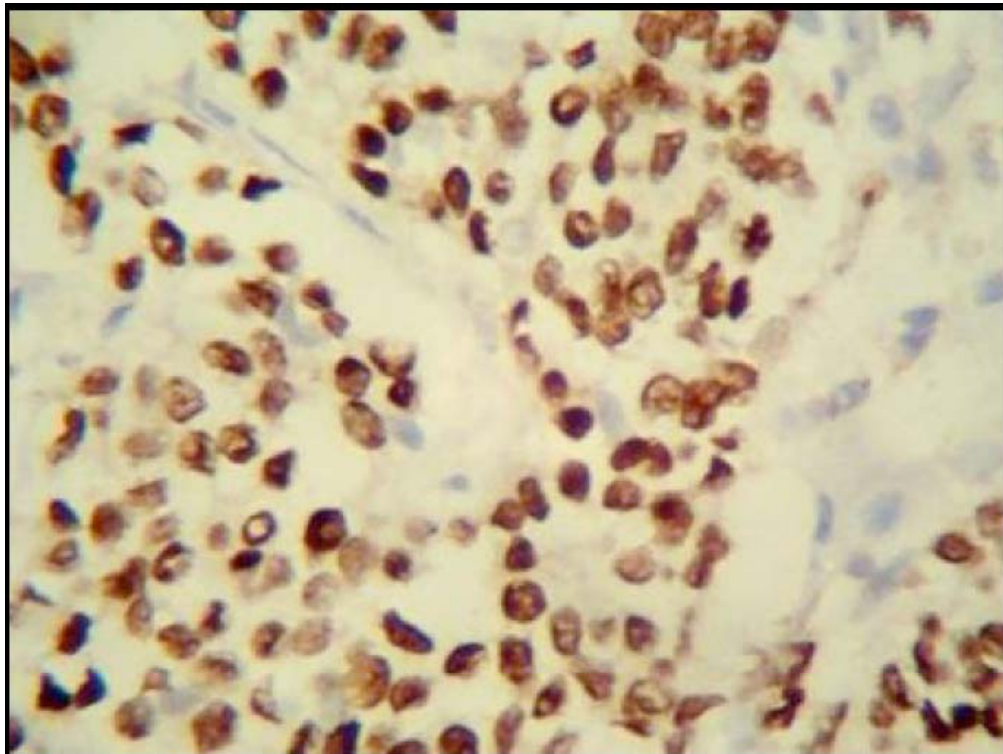


## PHOTOMICROGRAPHS LEGENDS

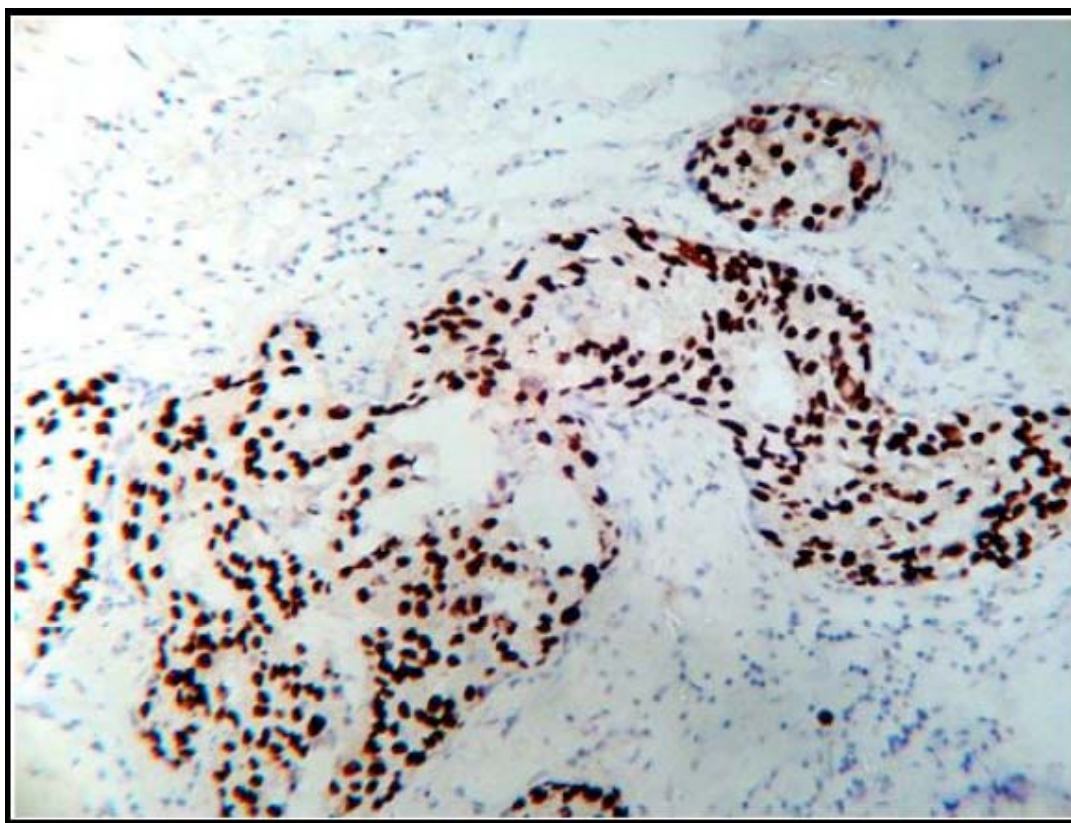


**Photo. (1a).** Breast ductal carcinoma with positive ER receptors expression. Neoplastic cells show a distinct strong nuclear staining reaction (+3). (a.X10)

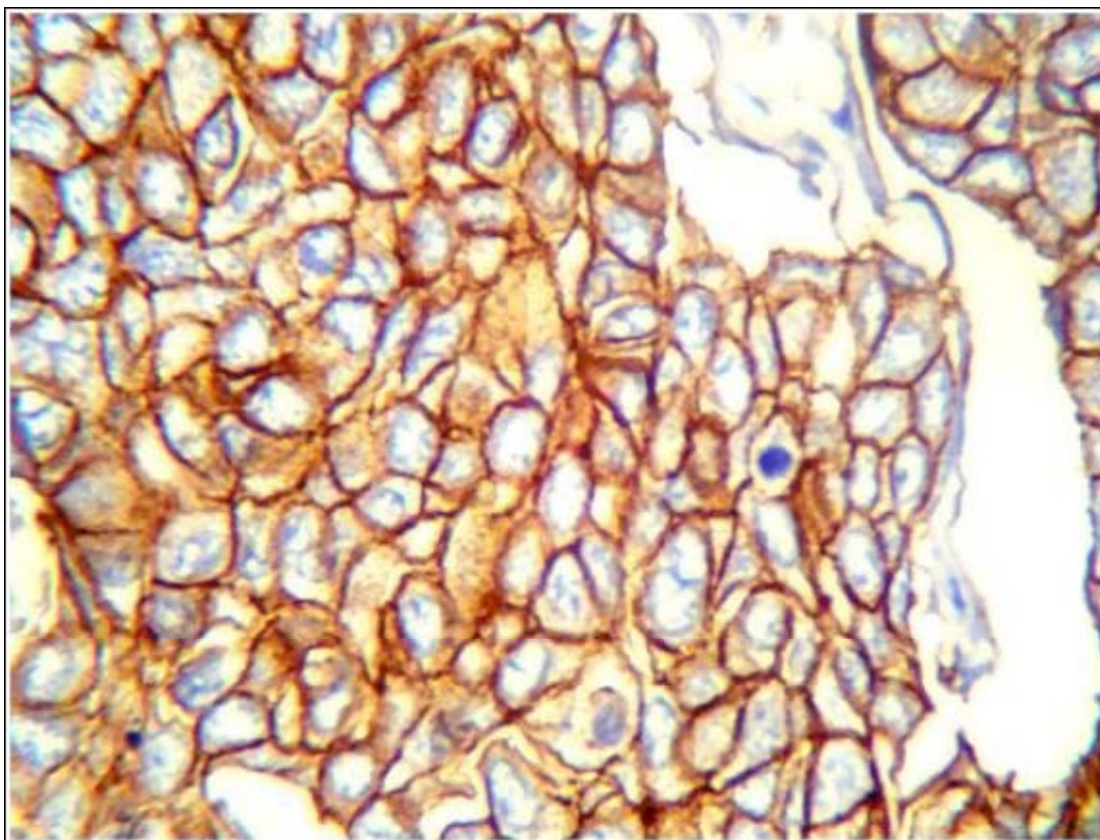


**Photo. (1b).** Breast ductal carcinoma with positive ER receptors expression. Neoplastic cells show a distinct strong nuclear staining reaction (+3). (b.X40).

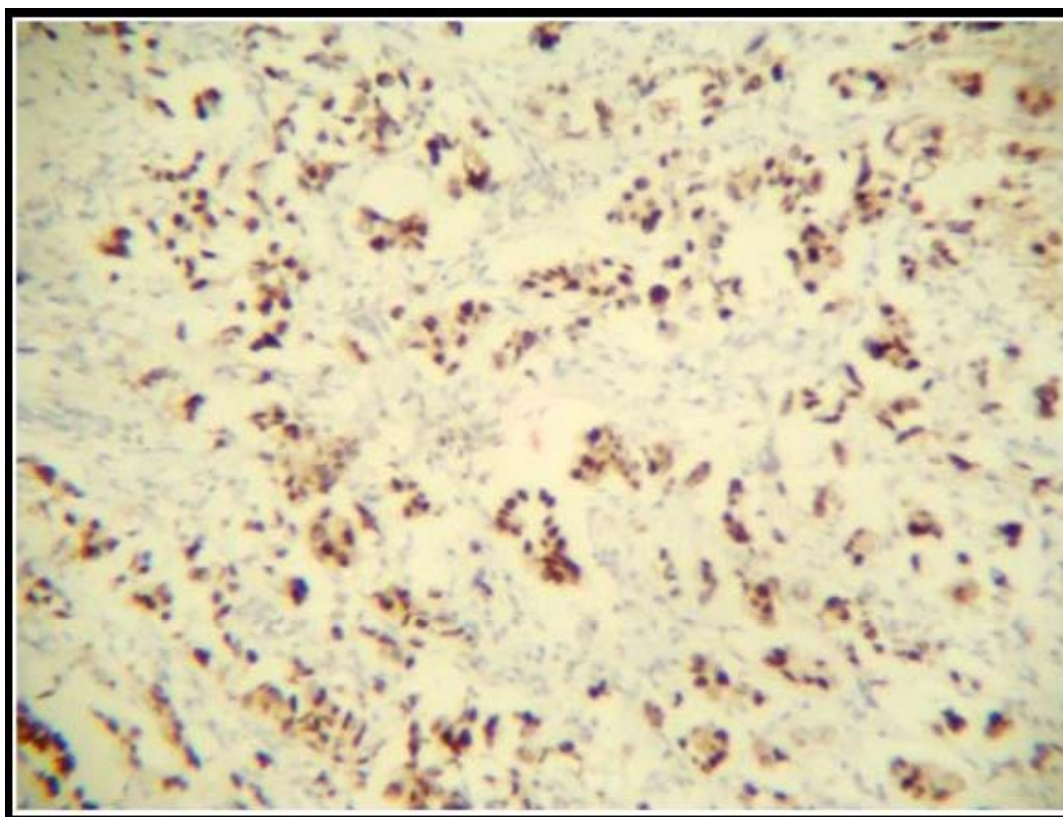




**3- Photo. (2).** Breast ductal carcinoma with positive PR receptors expression. Neoplastic cells show a distinct strong nuclear staining reaction.



**4- Photo. (3).** Breast ductal carcinoma with positive Her2/neu expression. Neoplastic cells show a distinct membranous and cytoplasmic staining reaction.



**5- Photo. (4).** Breast ductal carcinoma with positive P53 expression. Neoplastic cells show a distinct strong nuclear staining reaction.