

## Supplementary Information

Flavonoid Glycosides from the Aerial Parts of *Polygonatum odoratum* (Mill.) Druce Growing in Mongolia

Chunsiimyatav Ganbaatar<sup>1,2</sup>, Margit Gruner<sup>1</sup>, Dumaa Mishig<sup>2</sup>, Regdel Duger<sup>2</sup>, Arndt W. Schmidt<sup>1</sup> and Hans-Joachim Knölker<sup>1,\*</sup>

<sup>1</sup>Department Chemie, Technische Universität Dresden, Bergstrasse 66, 01069 Dresden, Germany; <sup>2</sup>Institute of Chemistry and Chemical Technology, Mongolian Academy of Sciences, Ulaanbaatar-210351, Mongolia

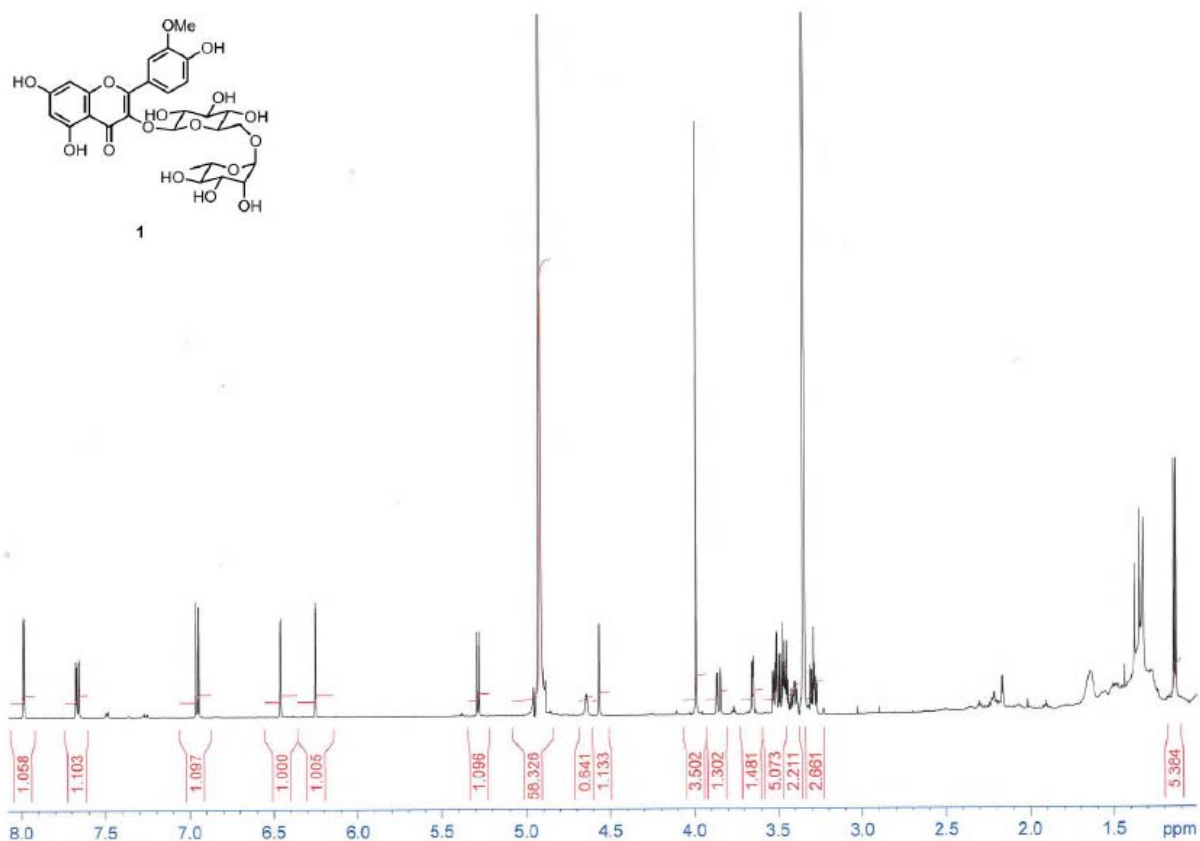
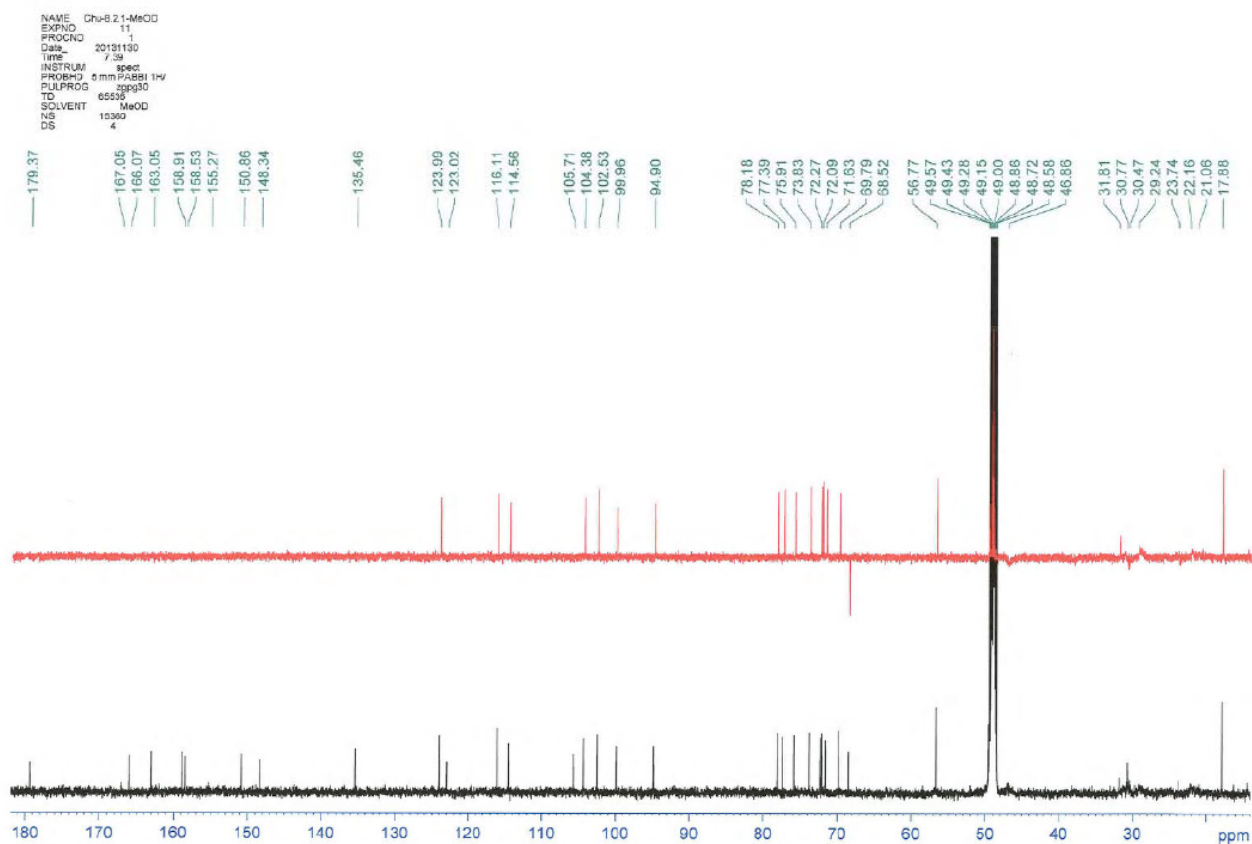


Figure S1. <sup>1</sup>H NMR Spectrum of Compound 1 in Methanol-*d*<sub>4</sub> (600 MHz)

Figure S2.  $^{13}\text{C}$  NMR Spectrum of Compound 1 in Methanol- $d_4$  (150 MHz)

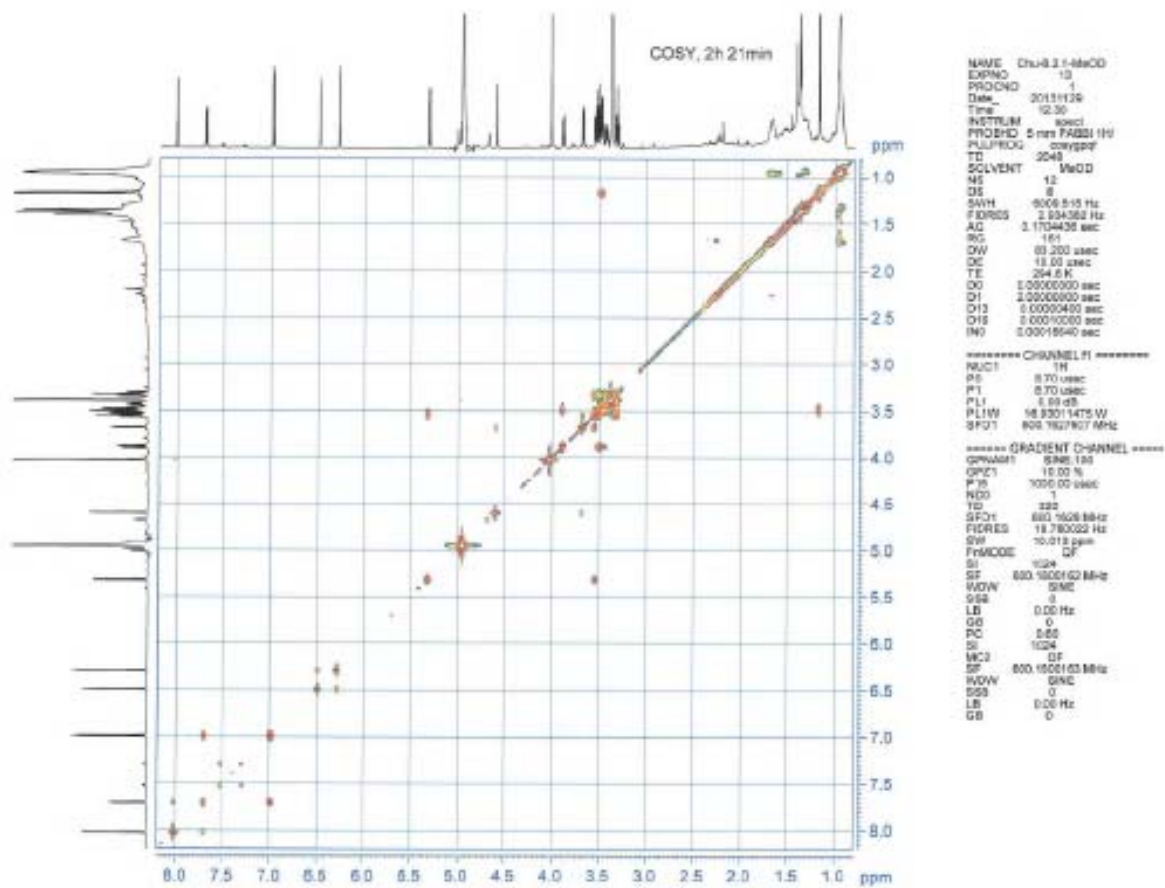
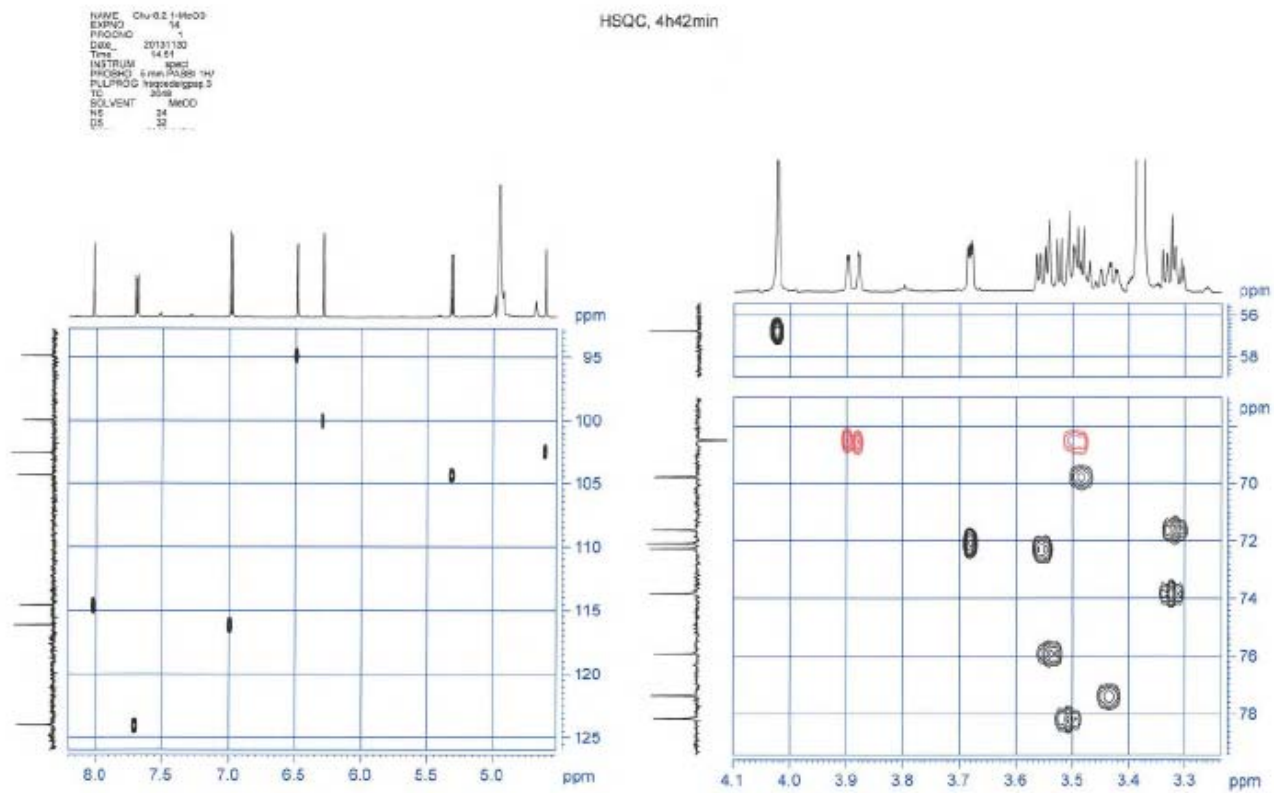


Figure S3. COSY Spectrum of Compound 1 in Methanol-*d*<sub>4</sub>





Figure S6. HSQC Spectrum of Compound 1 in Methanol- $d_4$



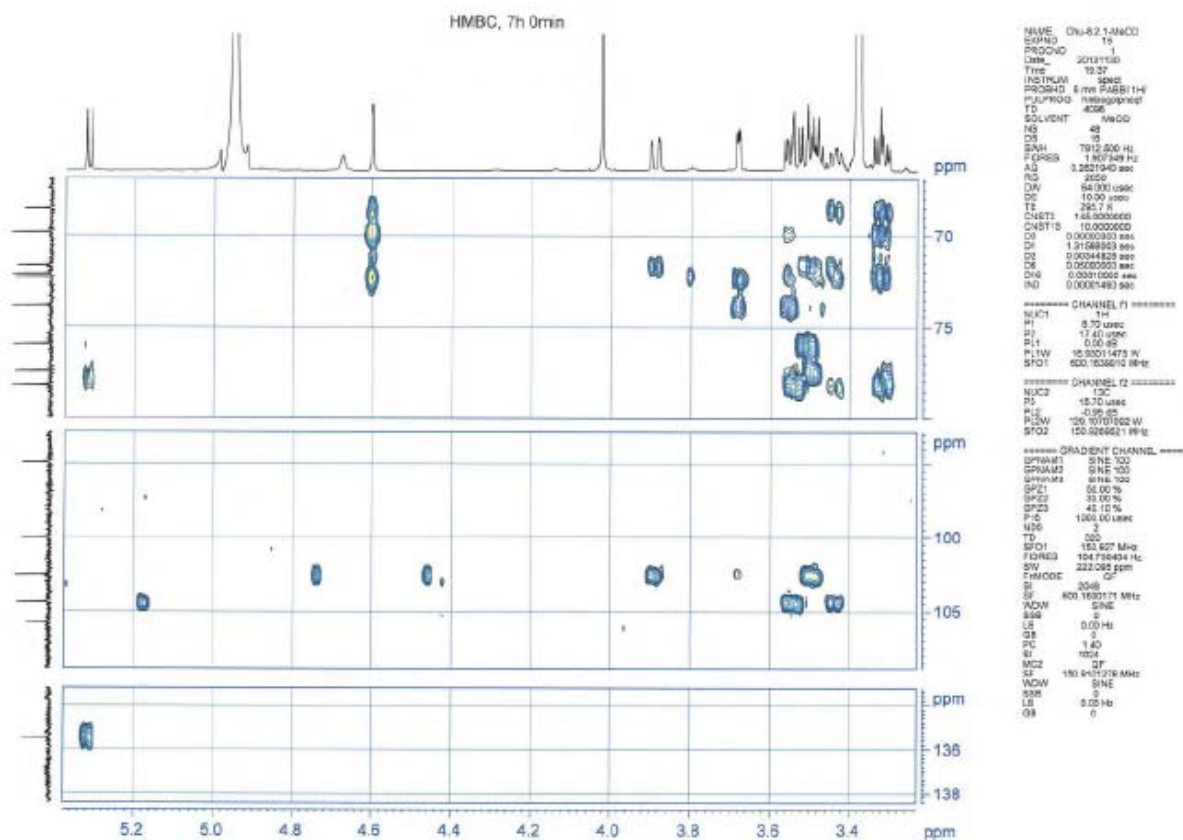


Figure S8. HMBC Spectrum of Compound 1 in Methanol-d<sub>4</sub>





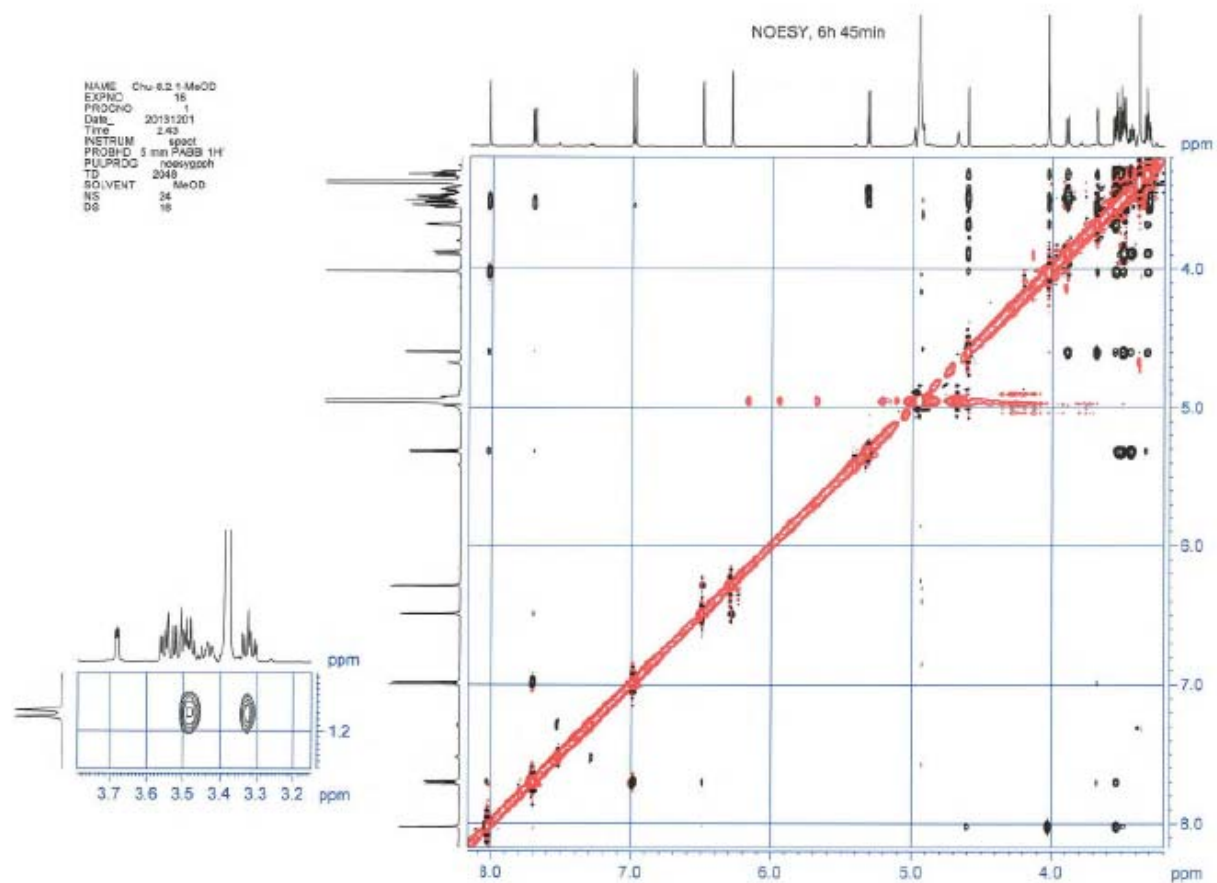
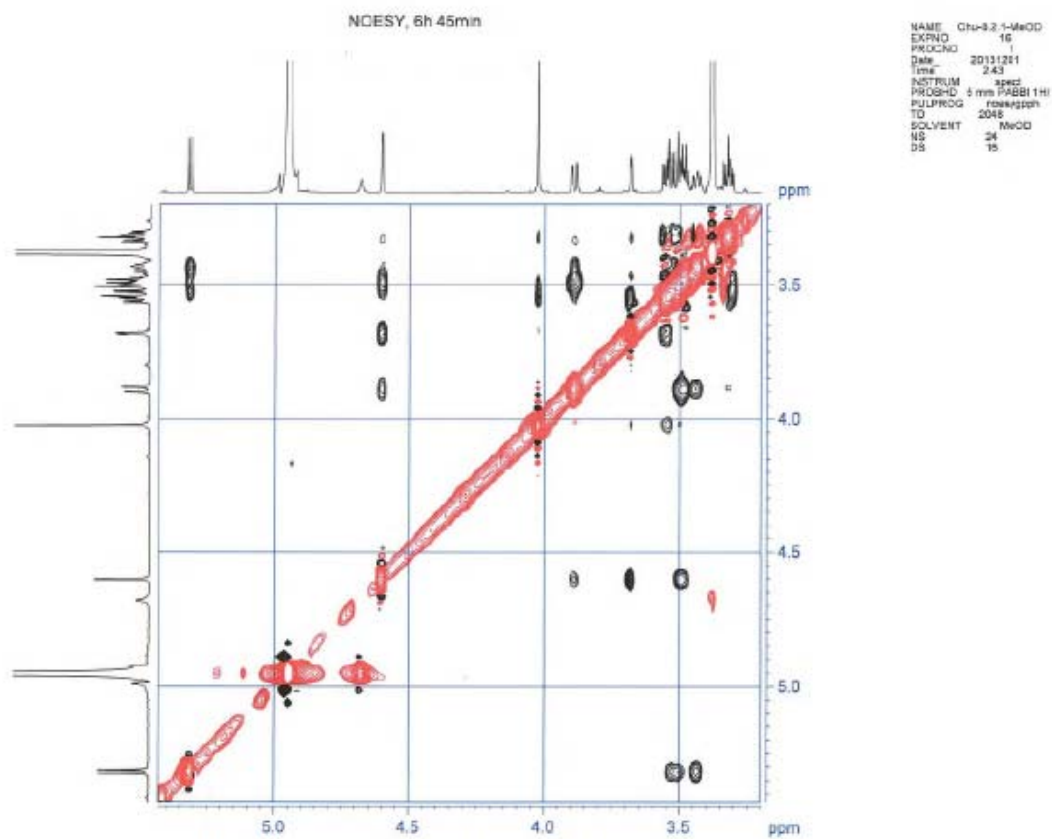
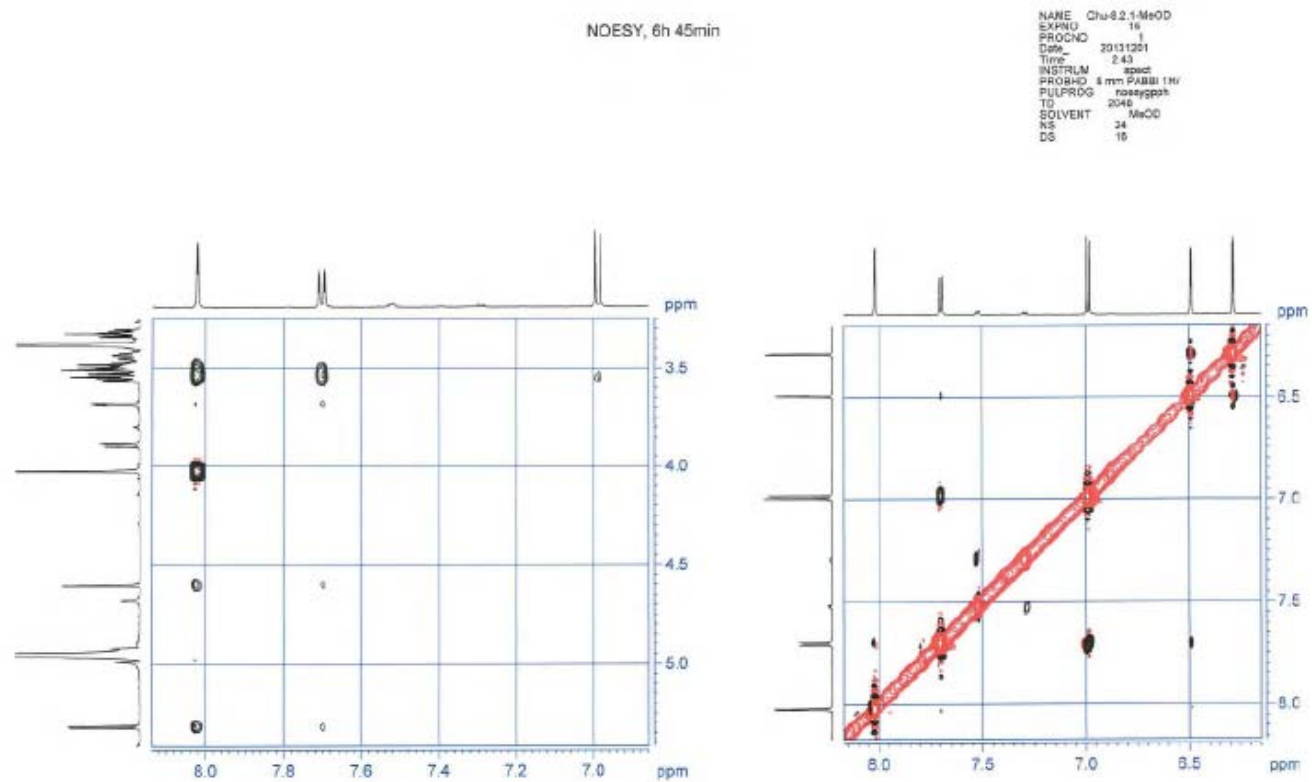
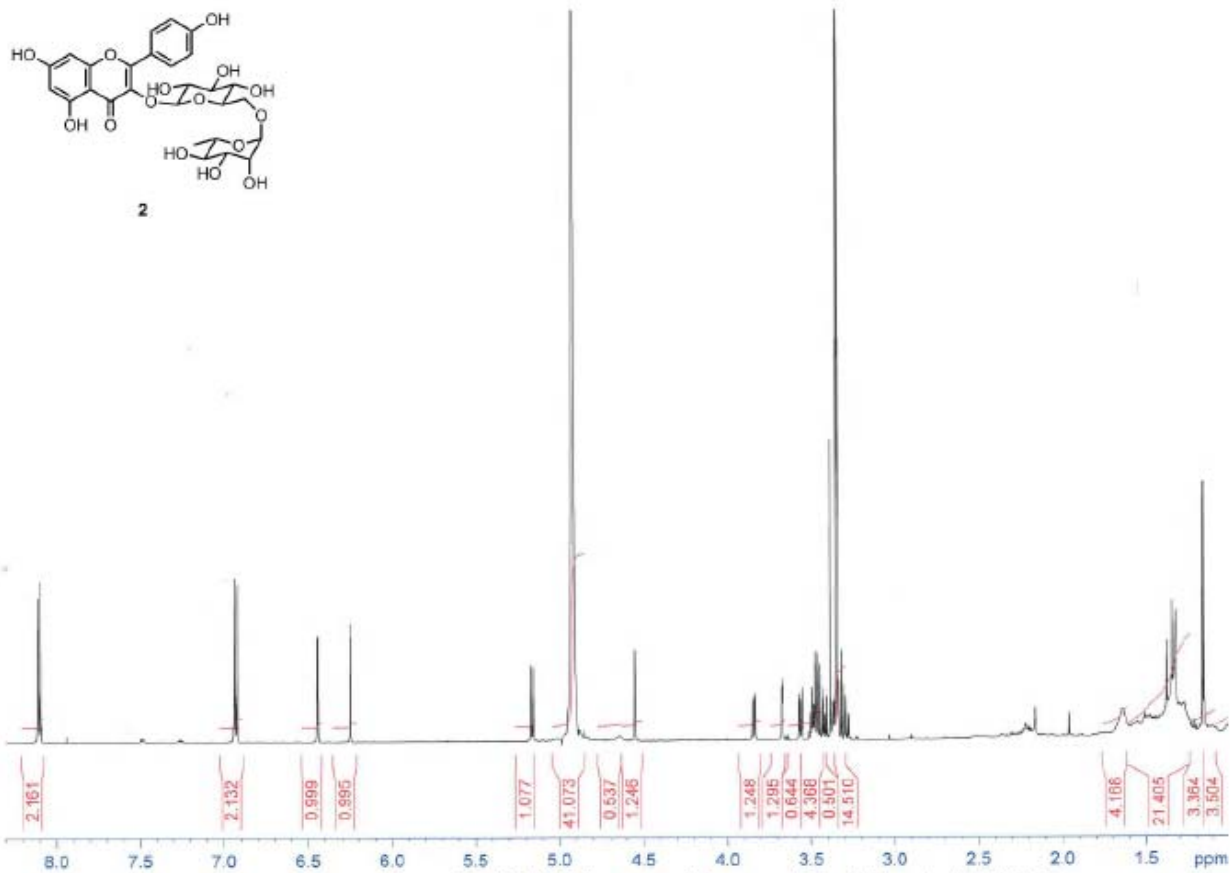
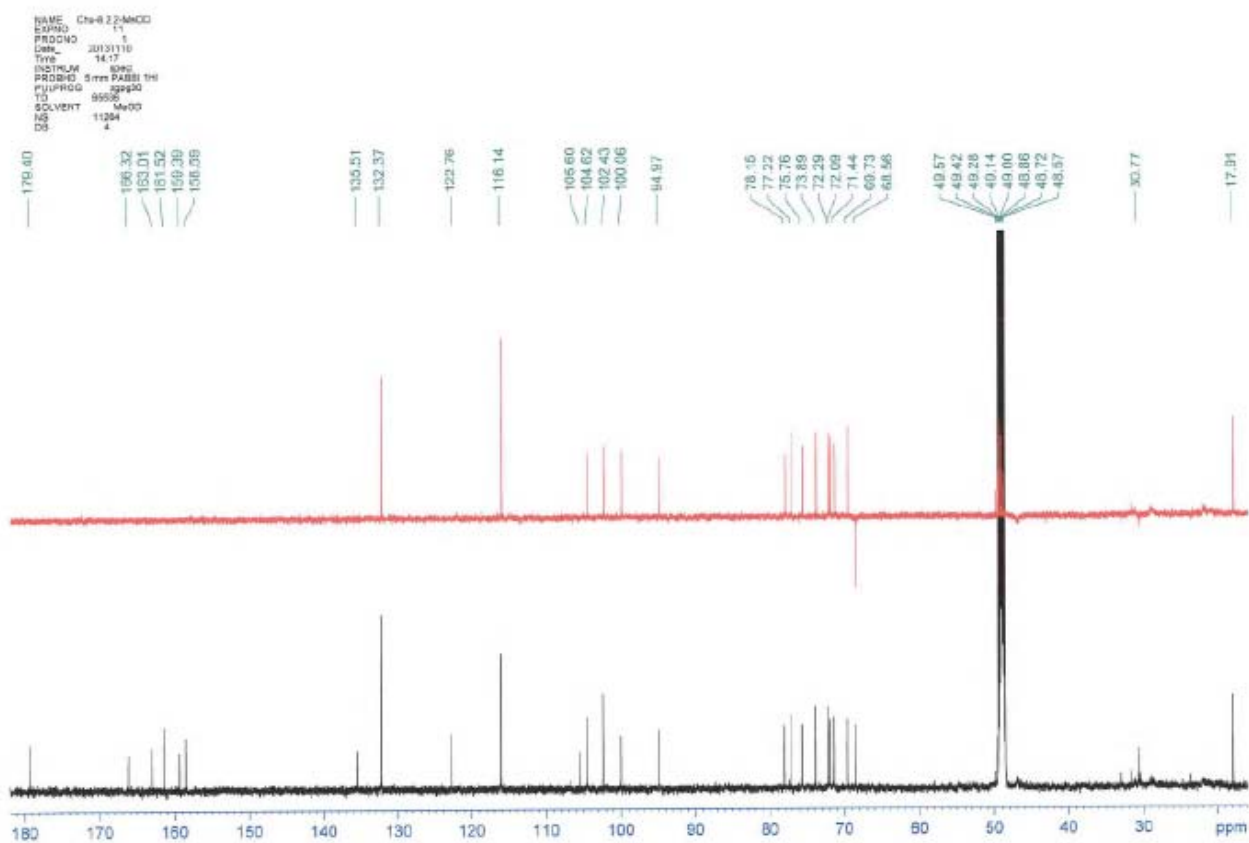


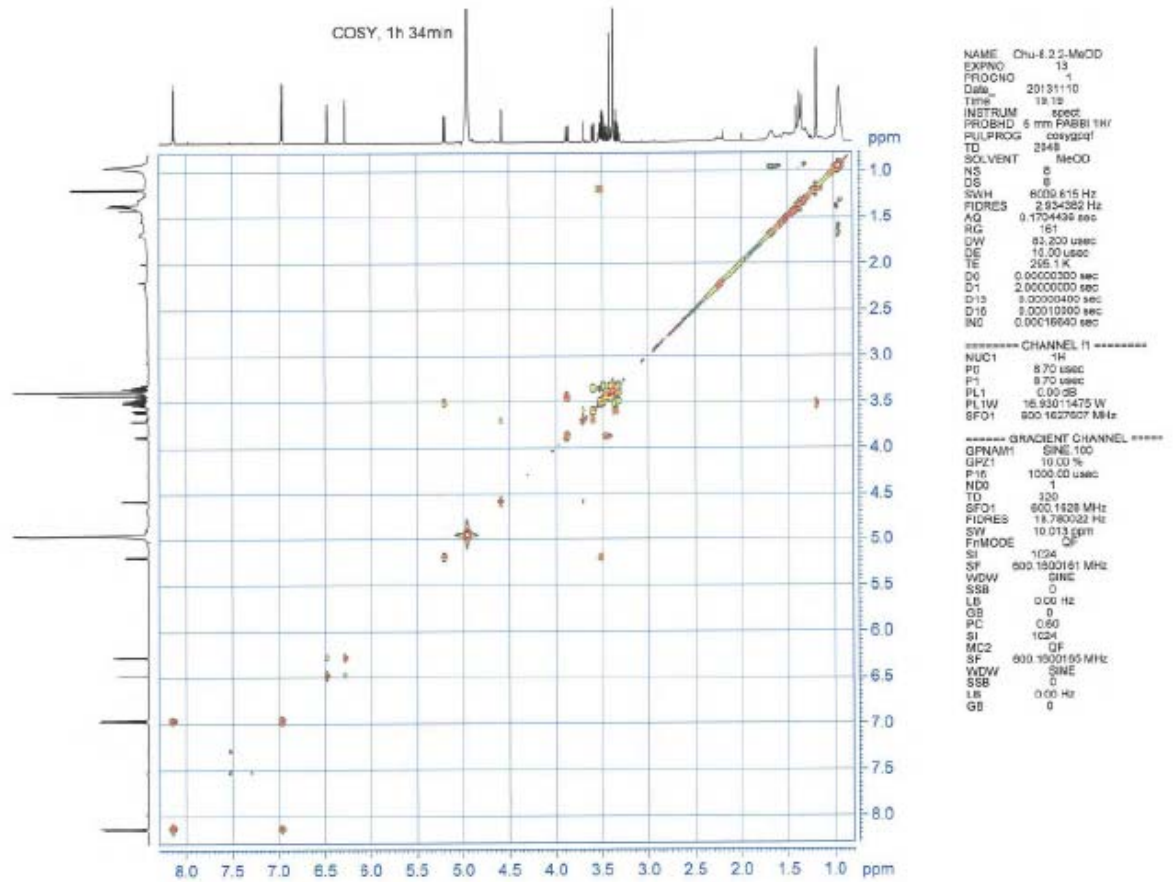
Figure S10. NOESY Spectrum of Compound **1** in Methanol-*d*<sub>4</sub>

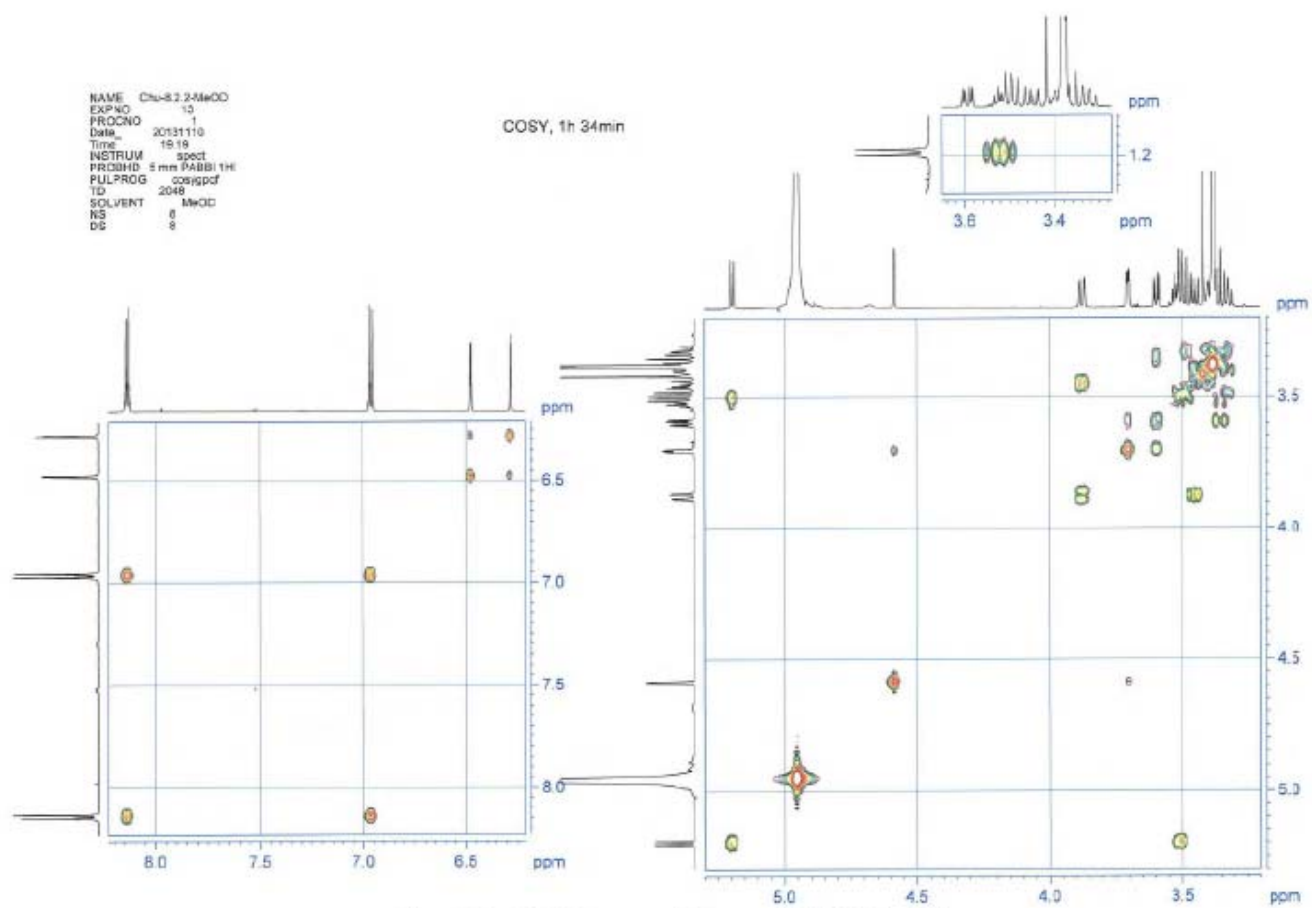
Figure S11. NOESY Spectrum of Compound **1** in Methanol- $d_4$

Figure S12. NOESY Spectrum of Compound **1** in Methanol- $d_4$

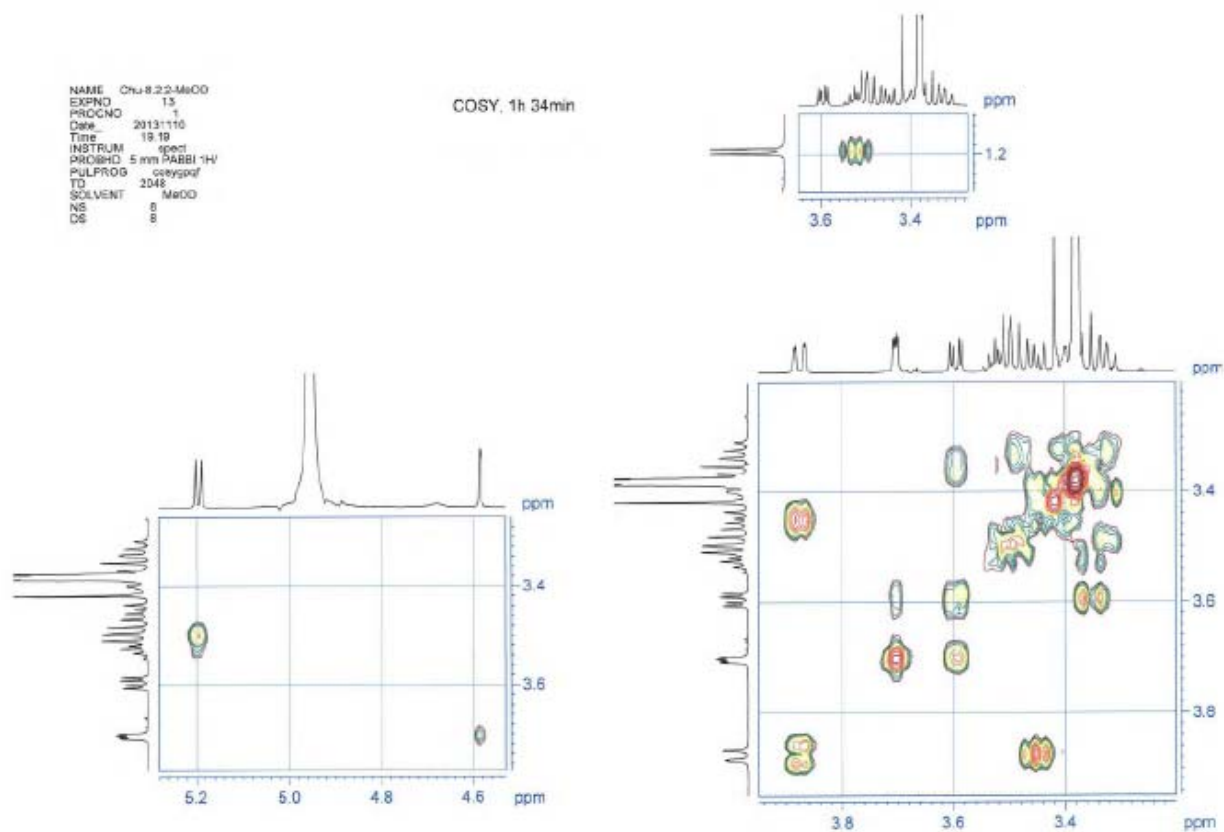
Figure S13. <sup>1</sup>H NMR Spectrum of Compound 2 in Methanol-*d*<sub>4</sub> (600 MHz)

Figure S14.  $^{13}\text{C}$  NMR Spectrum of Compound 2 in Methanol- $d_4$  (150 MHz)

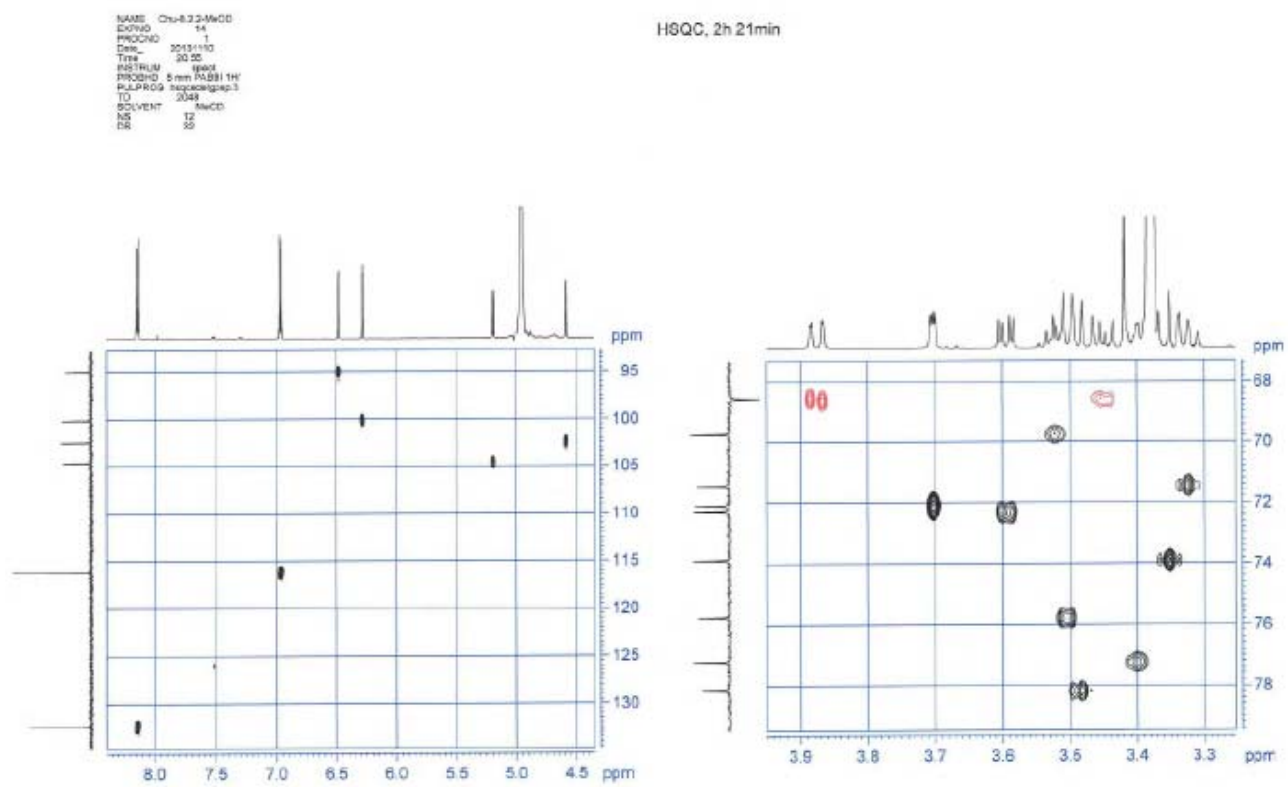
Figure S15. COSY Spectrum of Compound **2** in Methanol- $d_4$

Figure S16. COSY Spectrum of Compound 2 in Methanol- $d_4$

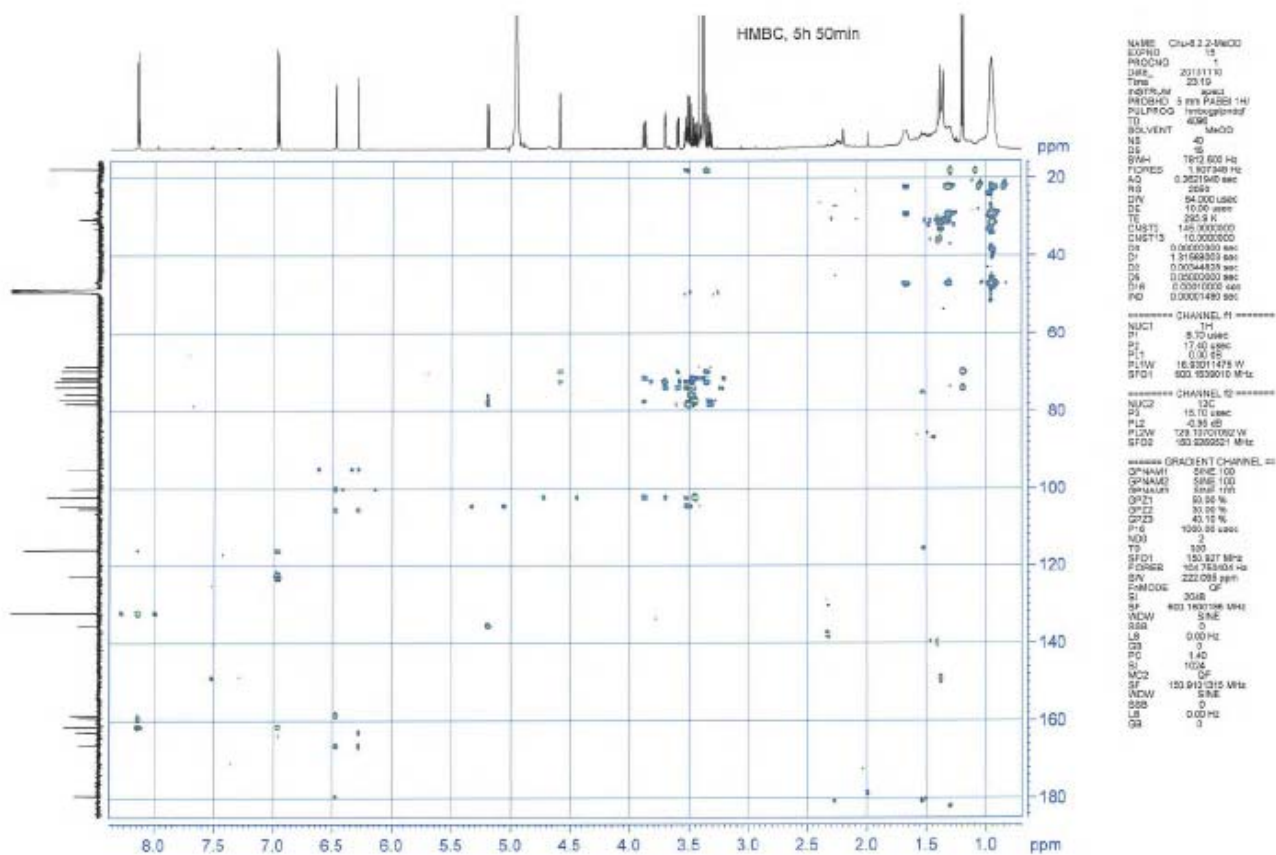


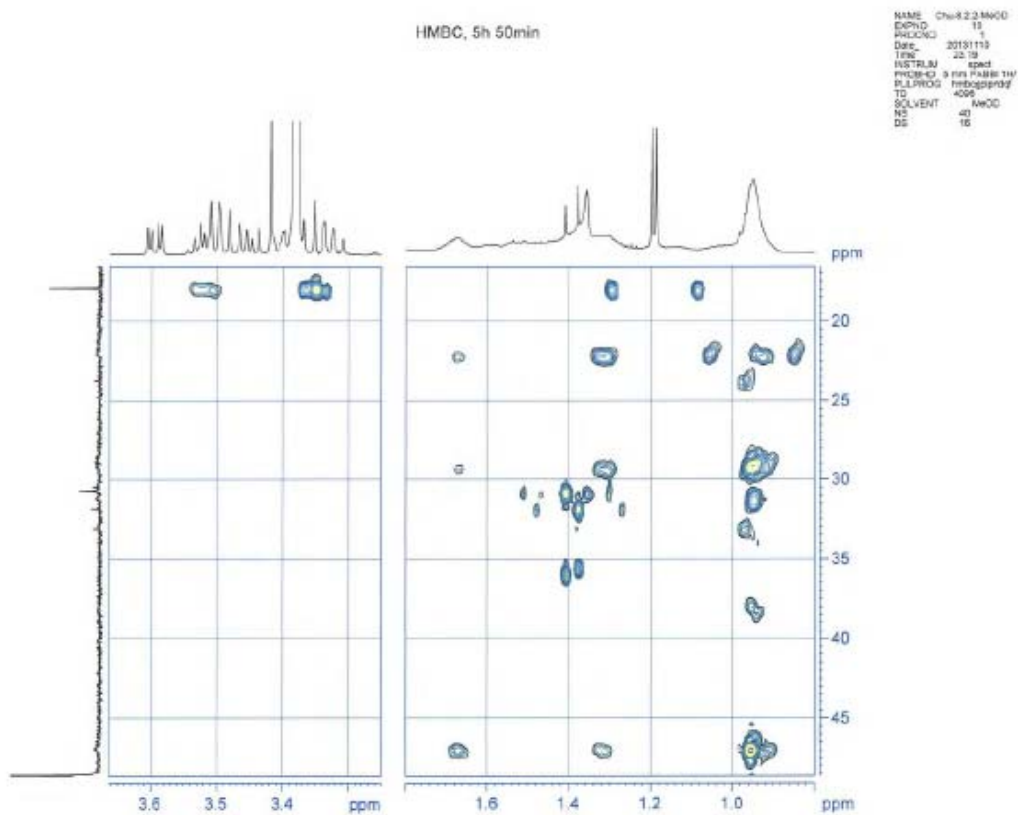
Figure S17. COSY Spectrum of Compound 2 in Methanol- $d_4$

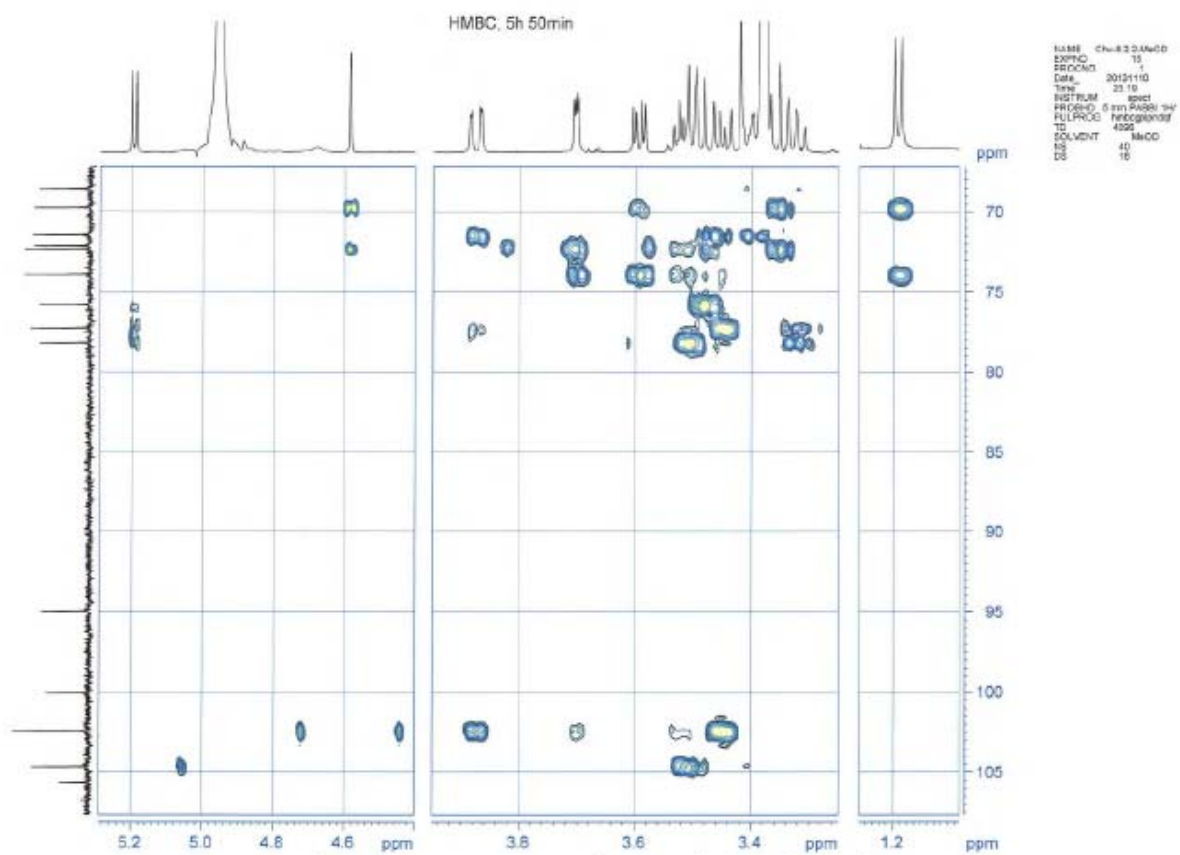


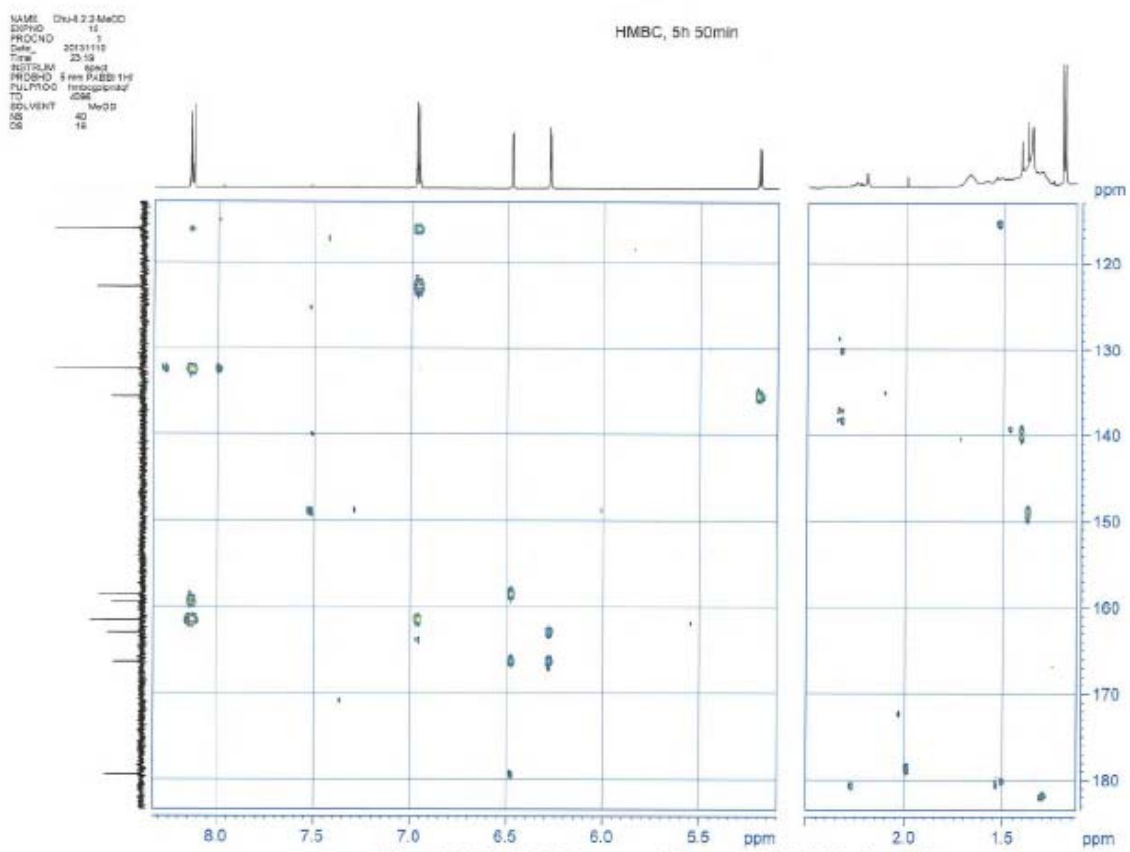
Figure S19. HSQC Spectrum of Compound 2 in Methanol-*d*<sub>4</sub>



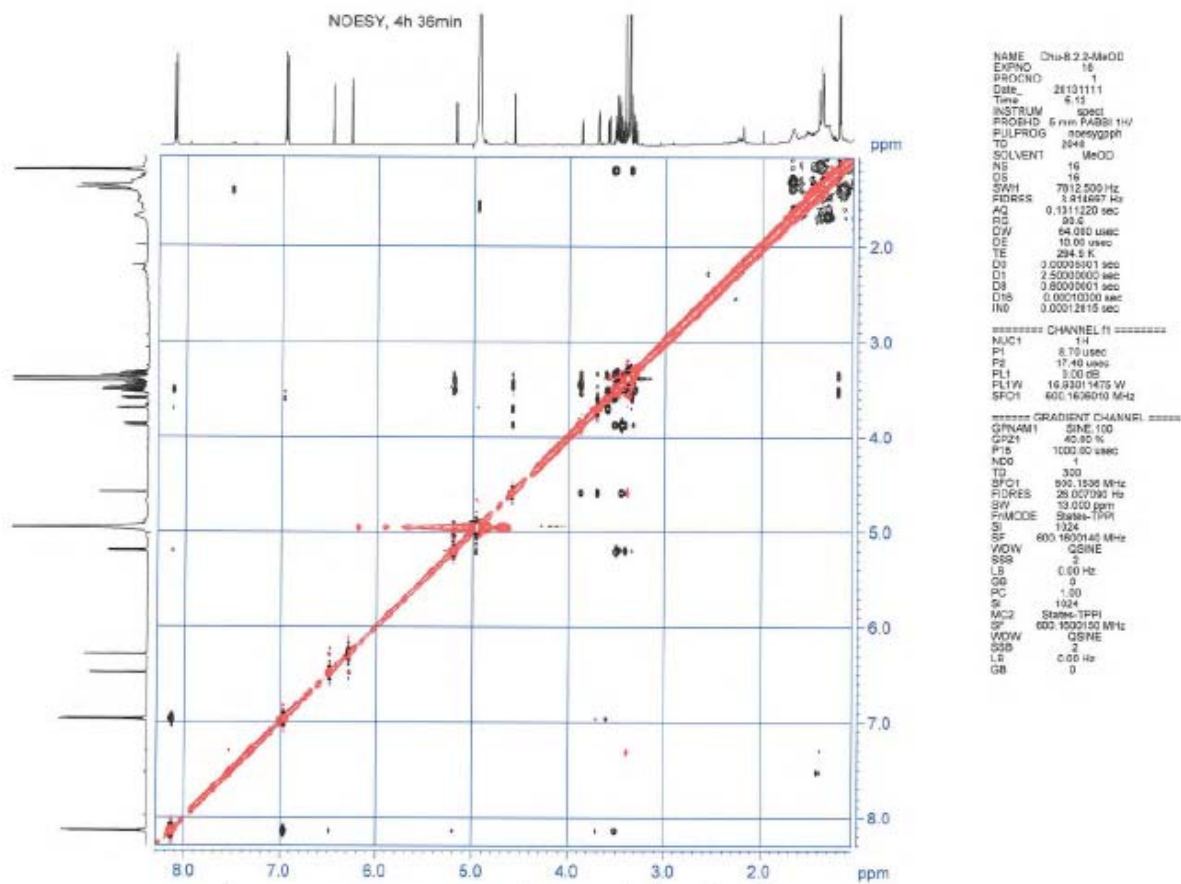
Figure S21. HMBC Spectrum of Compound 2 in Methanol-*d*<sub>4</sub>

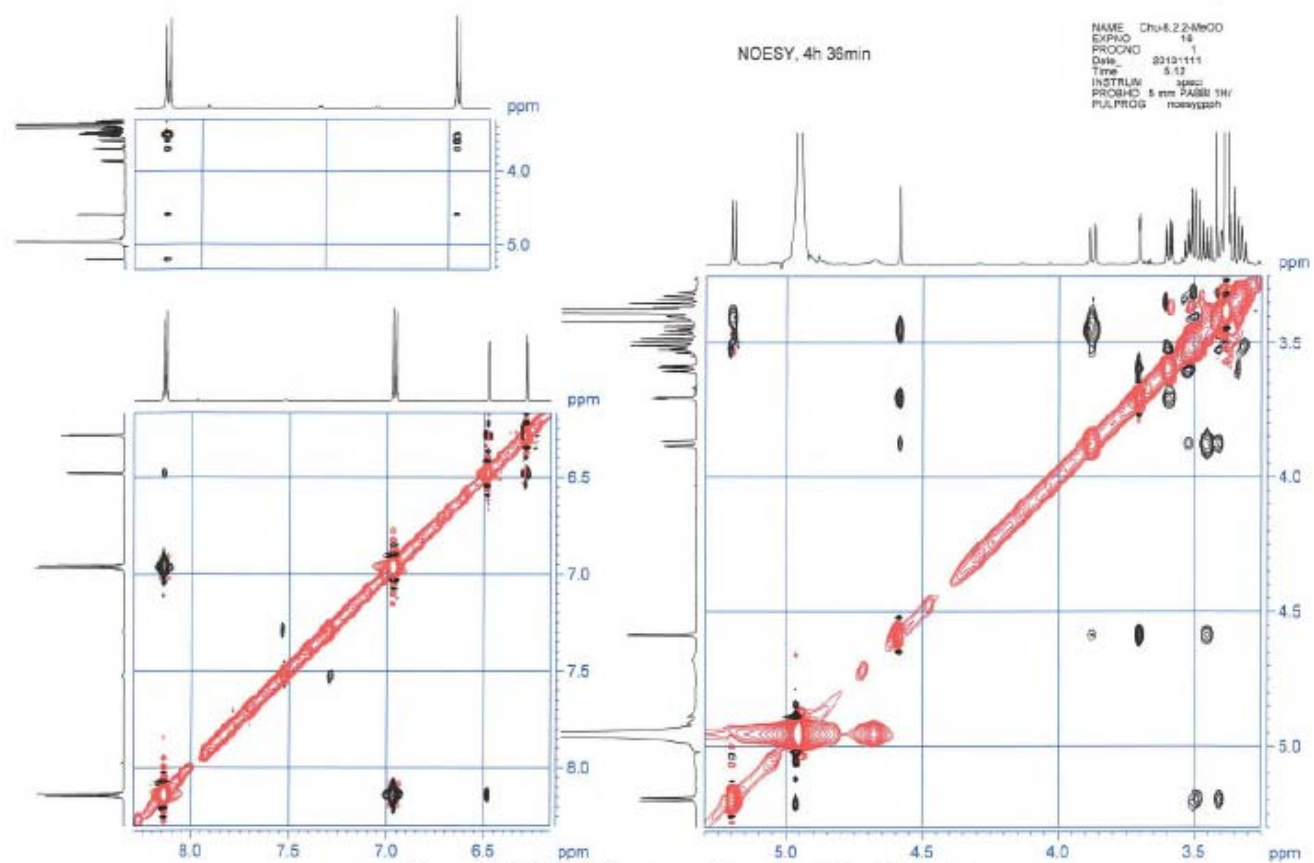
Figure S22. HMBC Spectrum of Compound 2 in Methanol- $d_4$

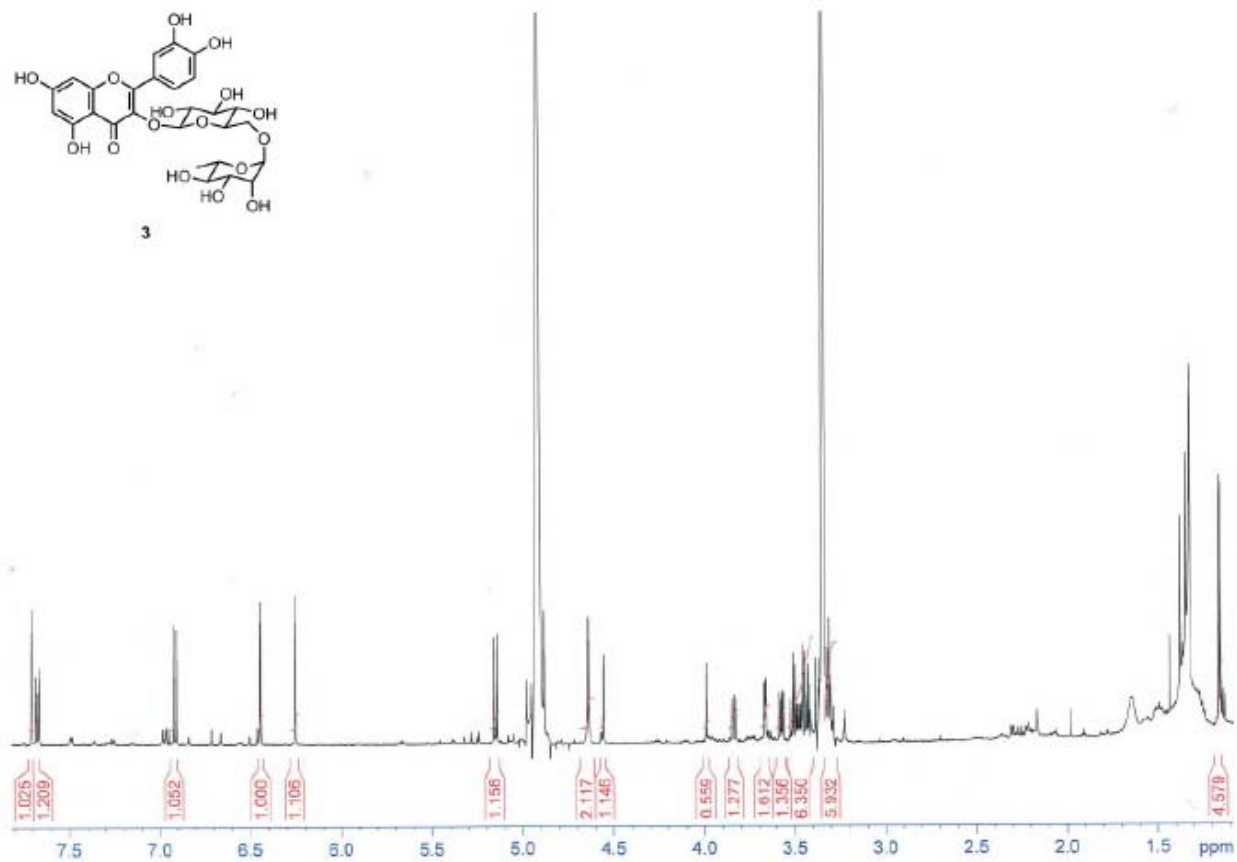
Figure S23. HMBC Spectrum of Compound 2 in Methanol- $d_4$

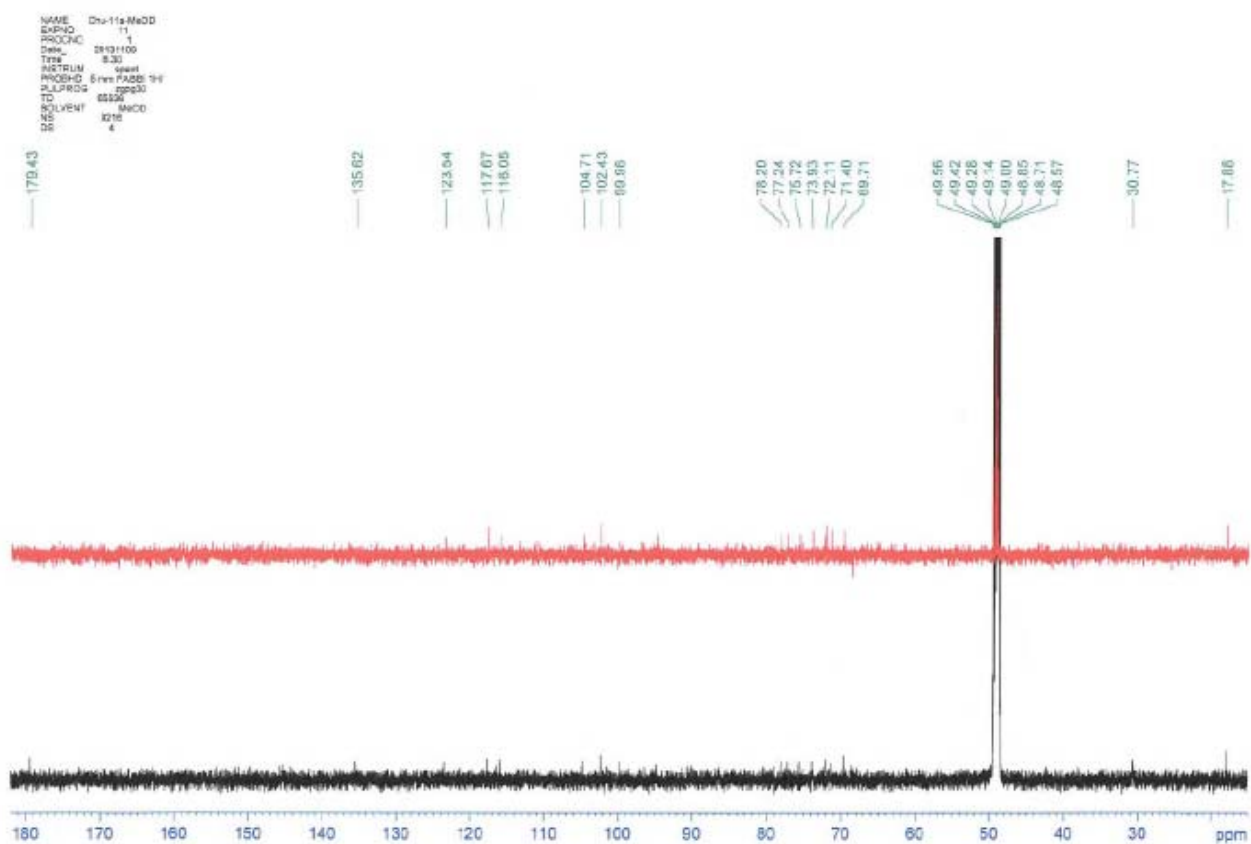
Figure S24. HMBC Spectrum of Compound **2** in Methanol-*d*<sub>4</sub>

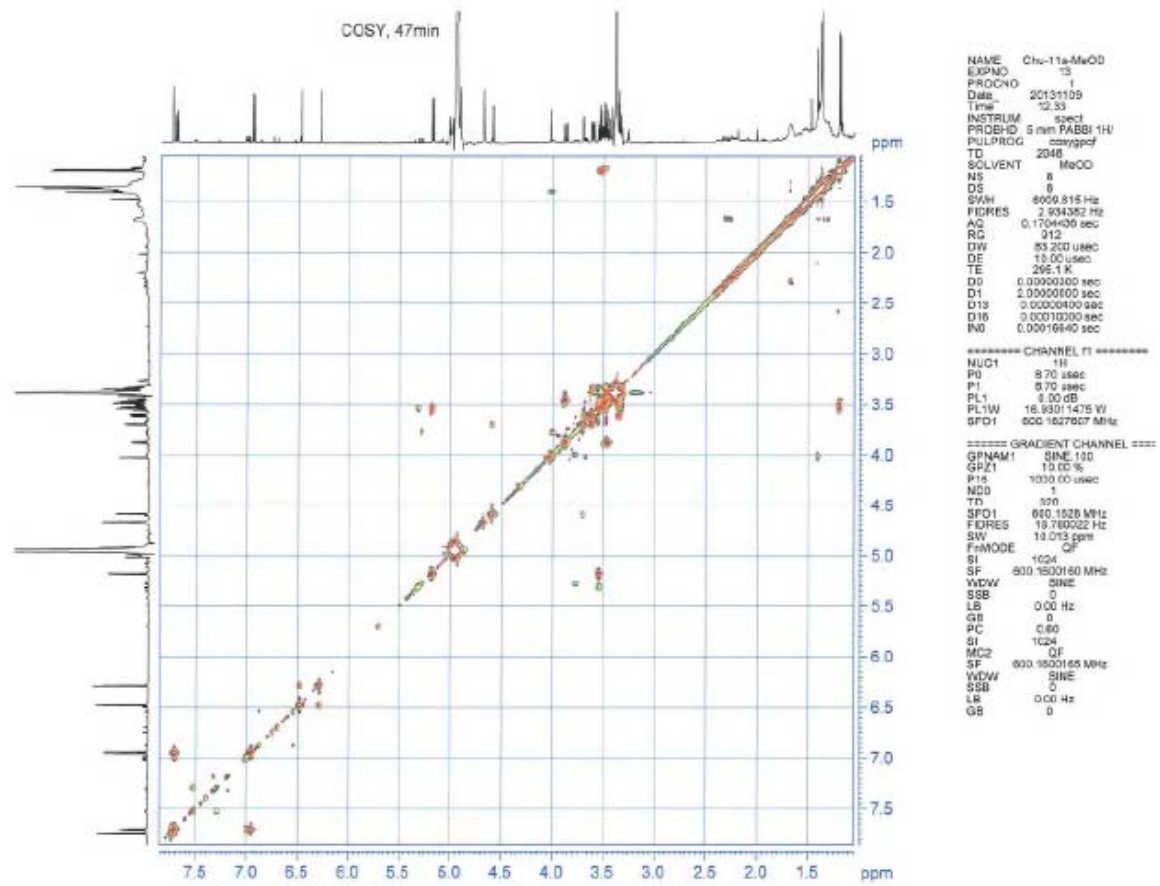


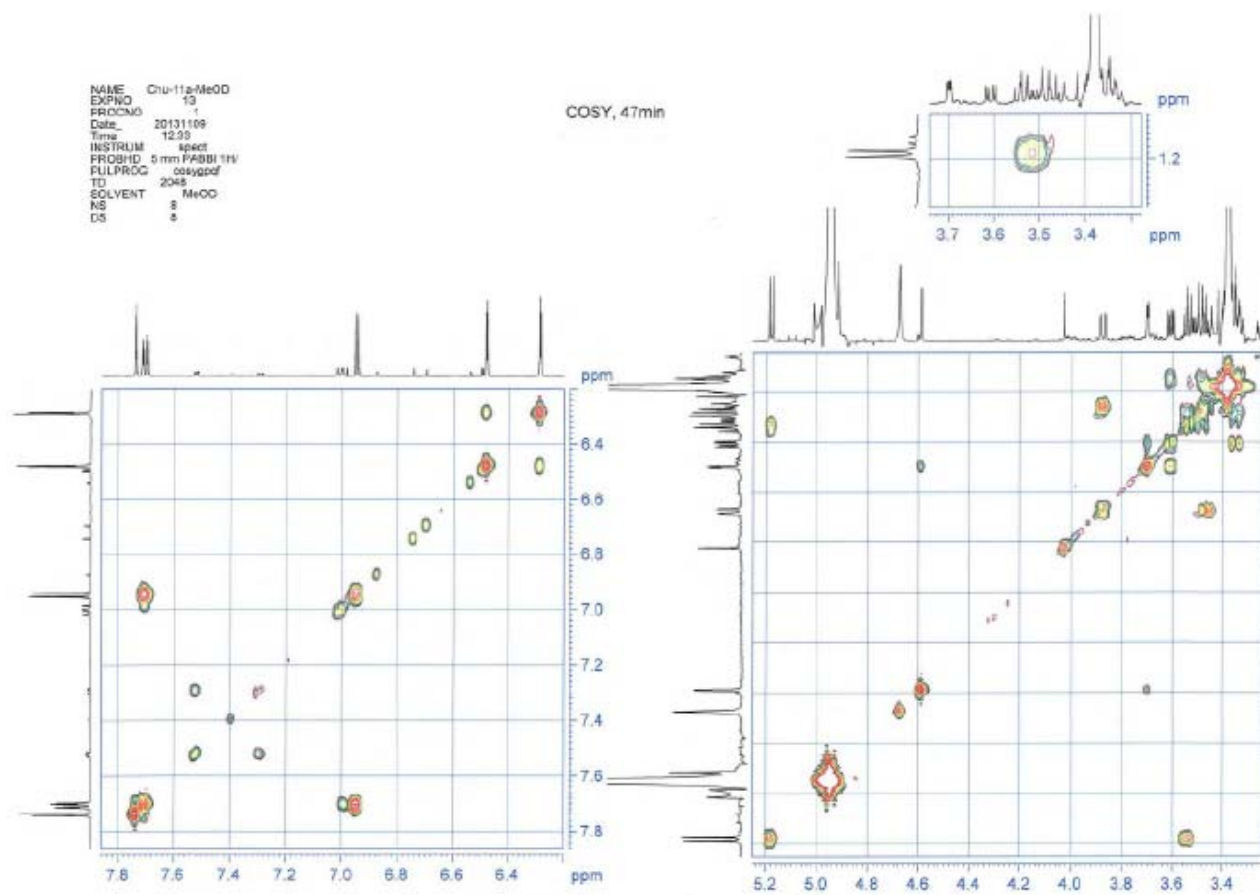
Figure S25. NOESY Spectrum of Compound **2** in Methanol- $d_4$

Figure S26. NOESY Spectrum of Compound 2 in Methanol- $d_4$

Figure S27. <sup>1</sup>H NMR Spectrum of Compound 3 in Methanol-d<sub>4</sub> (600 MHz)

Figure S28.  $^{13}\text{C}$  NMR Spectrum of Compound **3** in Methanol- $d_4$  (150 MHz)

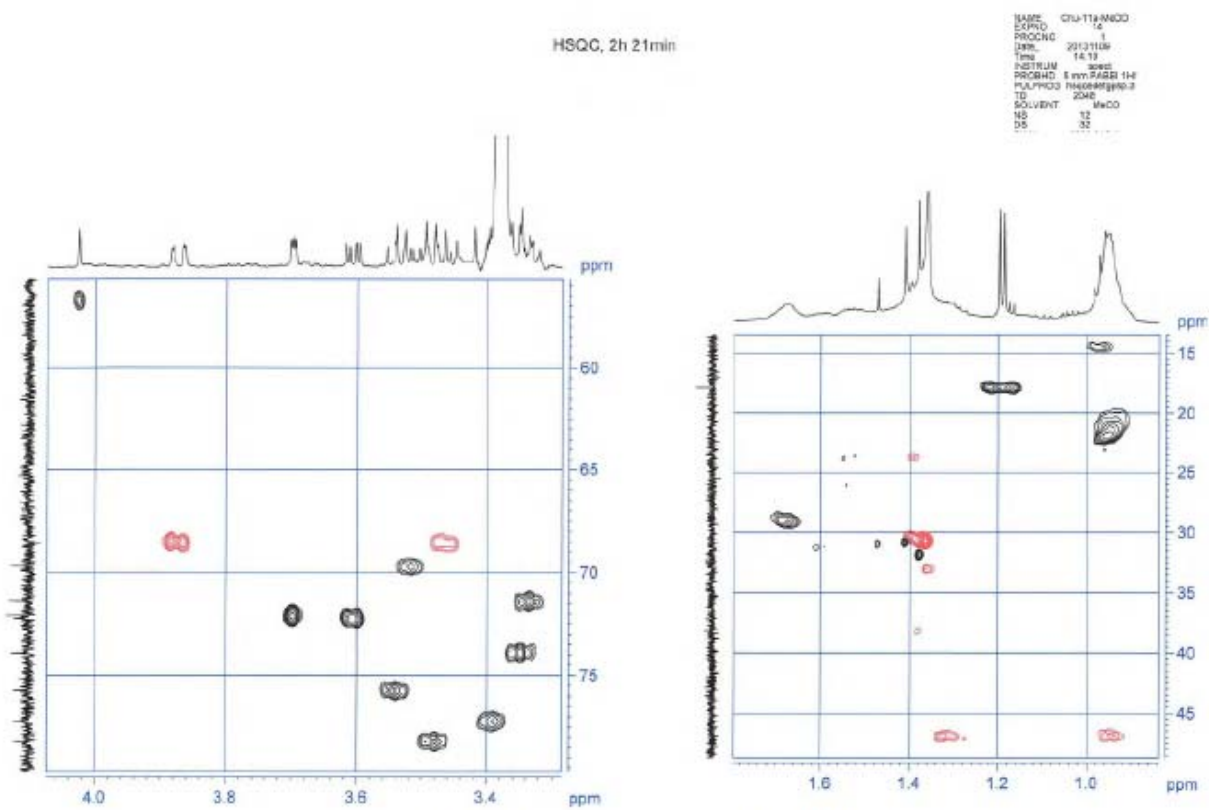
Figure S29. COSY Spectrum of Compound **3** in Methanol- $d_4$

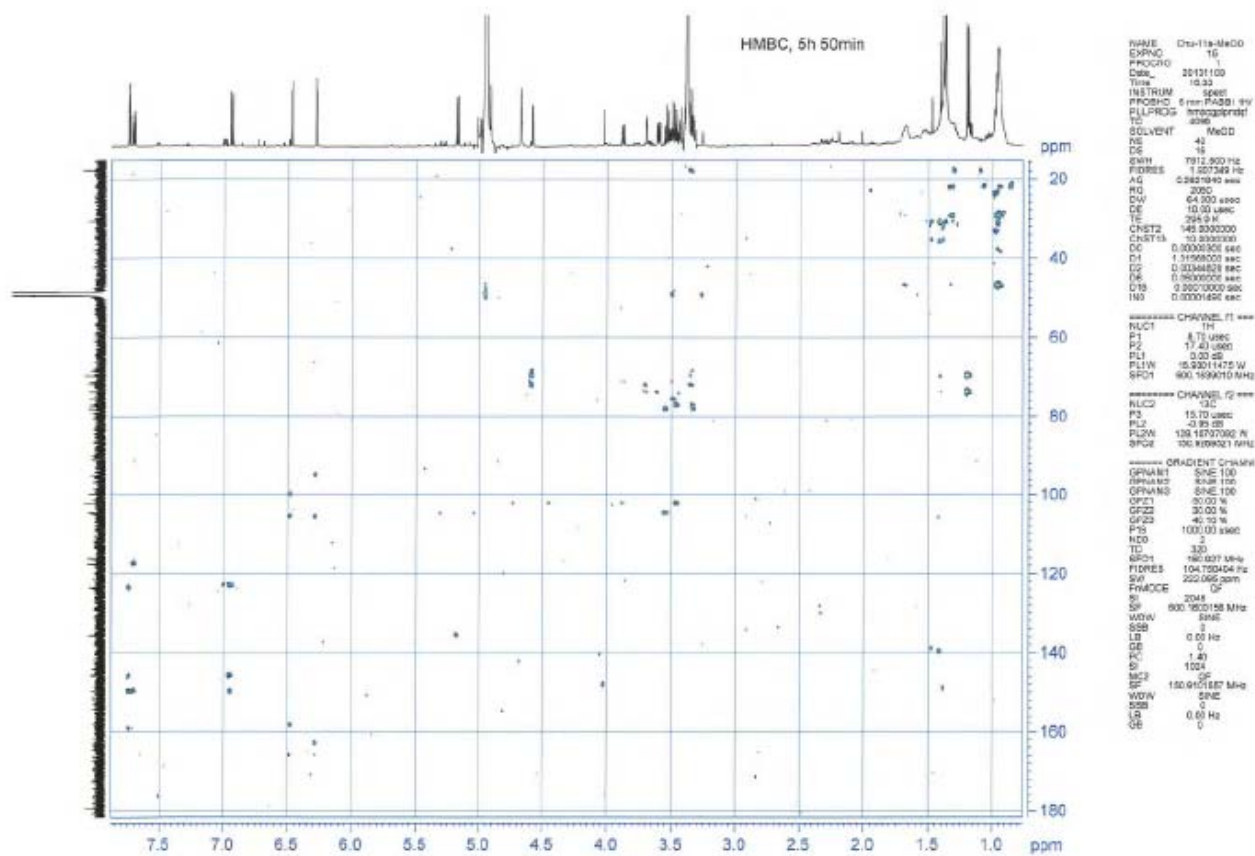
Figure S30. COSY Spectrum of Compound **3** in Methanol- $d_4$







Figure S33. HSQC Spectrum of Compound 3 in Methanol-*d*<sub>4</sub>

Figure S34. HMBC Spectrum of Compound 3 in Methanol- $d_4$

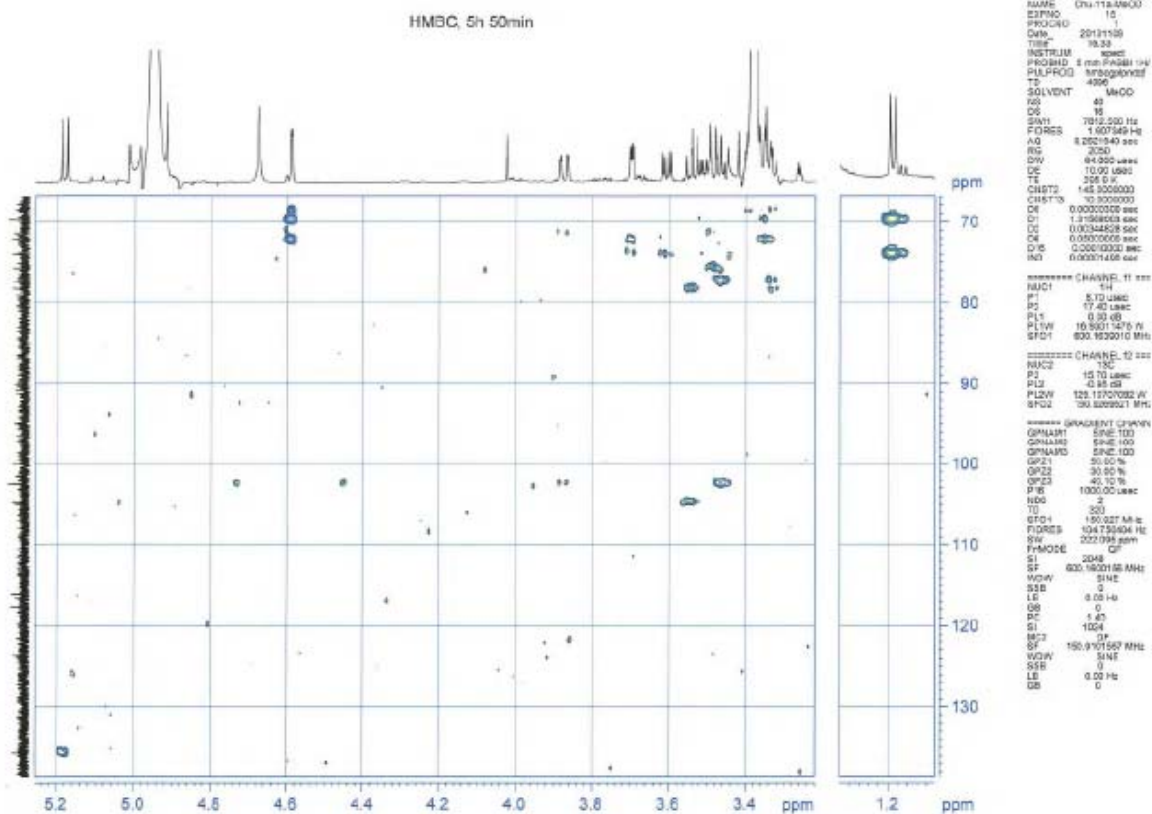
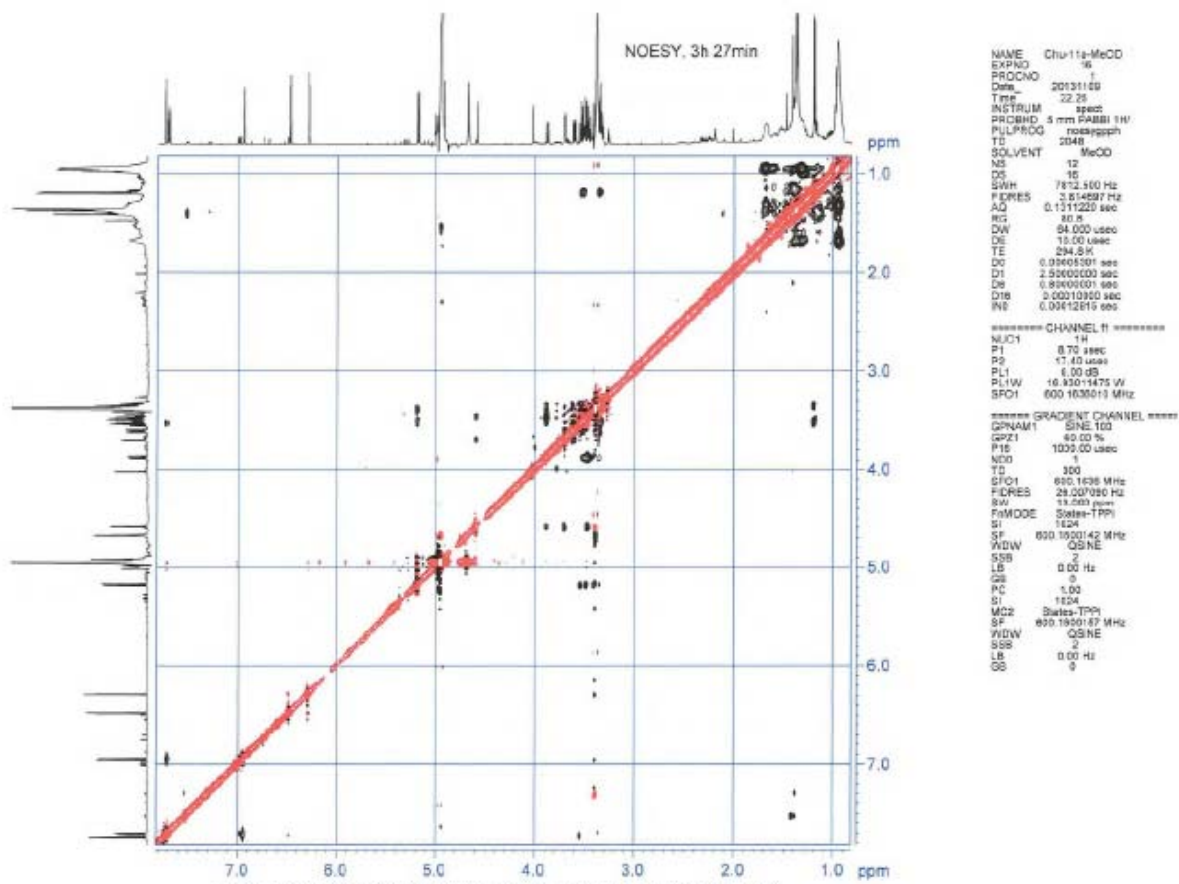
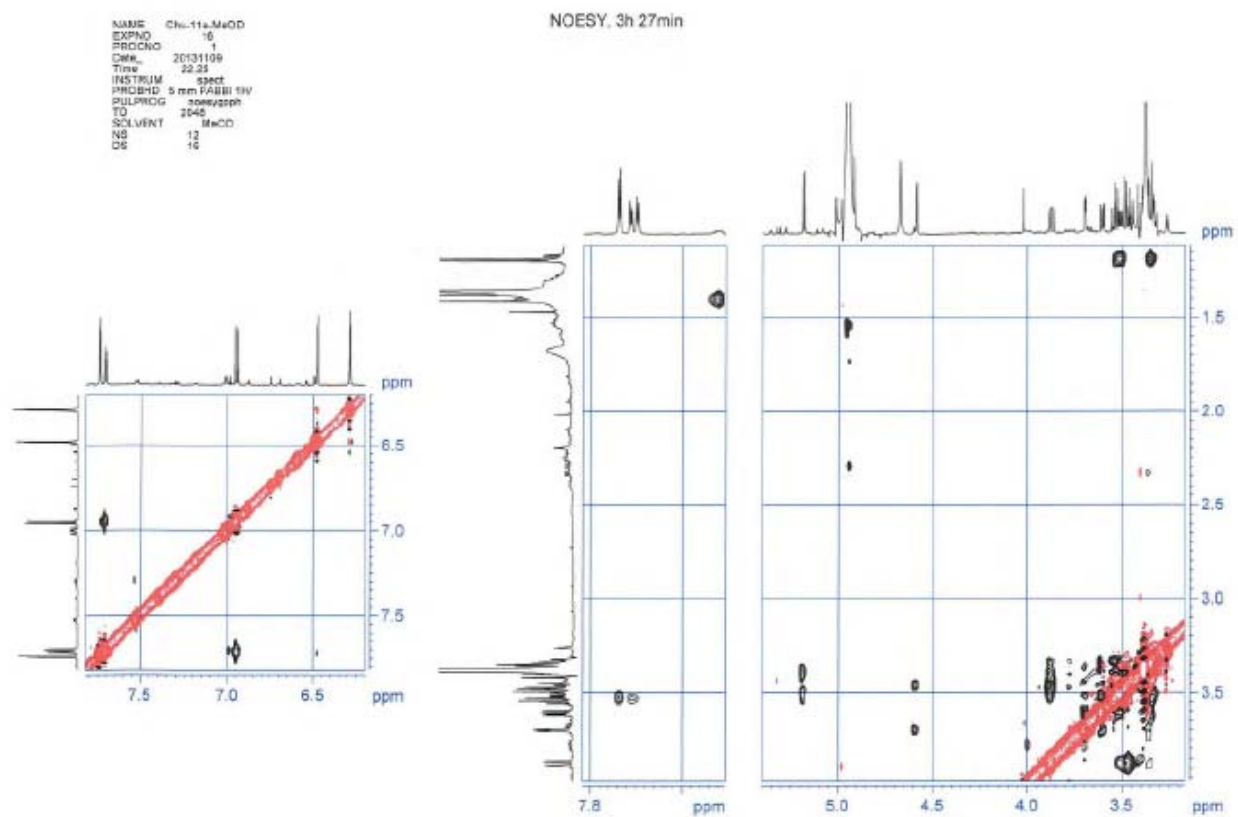
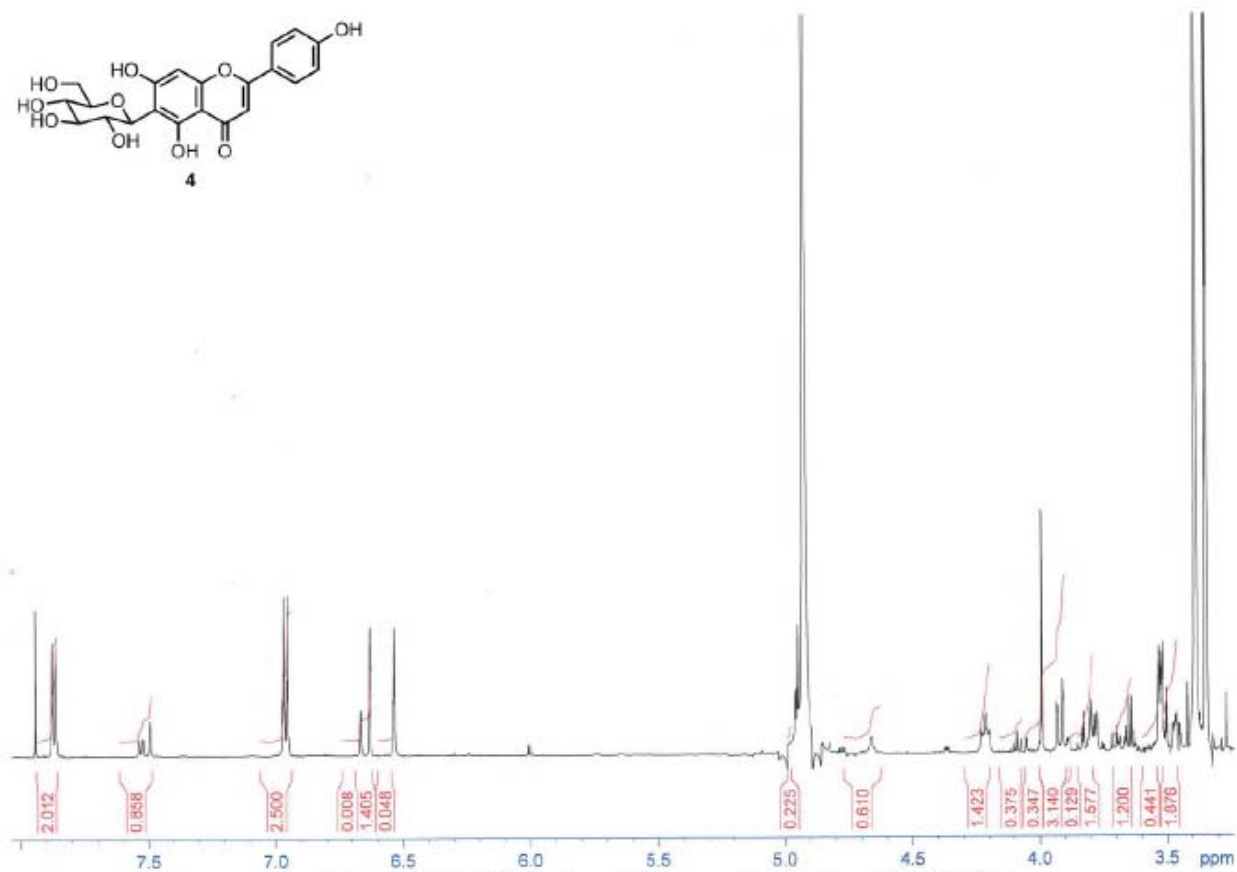
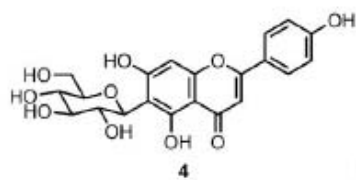


Figure S35. HMBC Spectrum of Compound 3 in Methanol-*d*<sub>4</sub>



Figure S37. NOESY Spectrum of Compound **3** in Methanol- $d_4$

Figure S38. NOESY Spectrum of Compound 3 in Methanol- $d_4$

Figure S39. <sup>1</sup>H NMR Spectrum of Compound 4 in Methanol-d<sub>4</sub> (600 MHz)

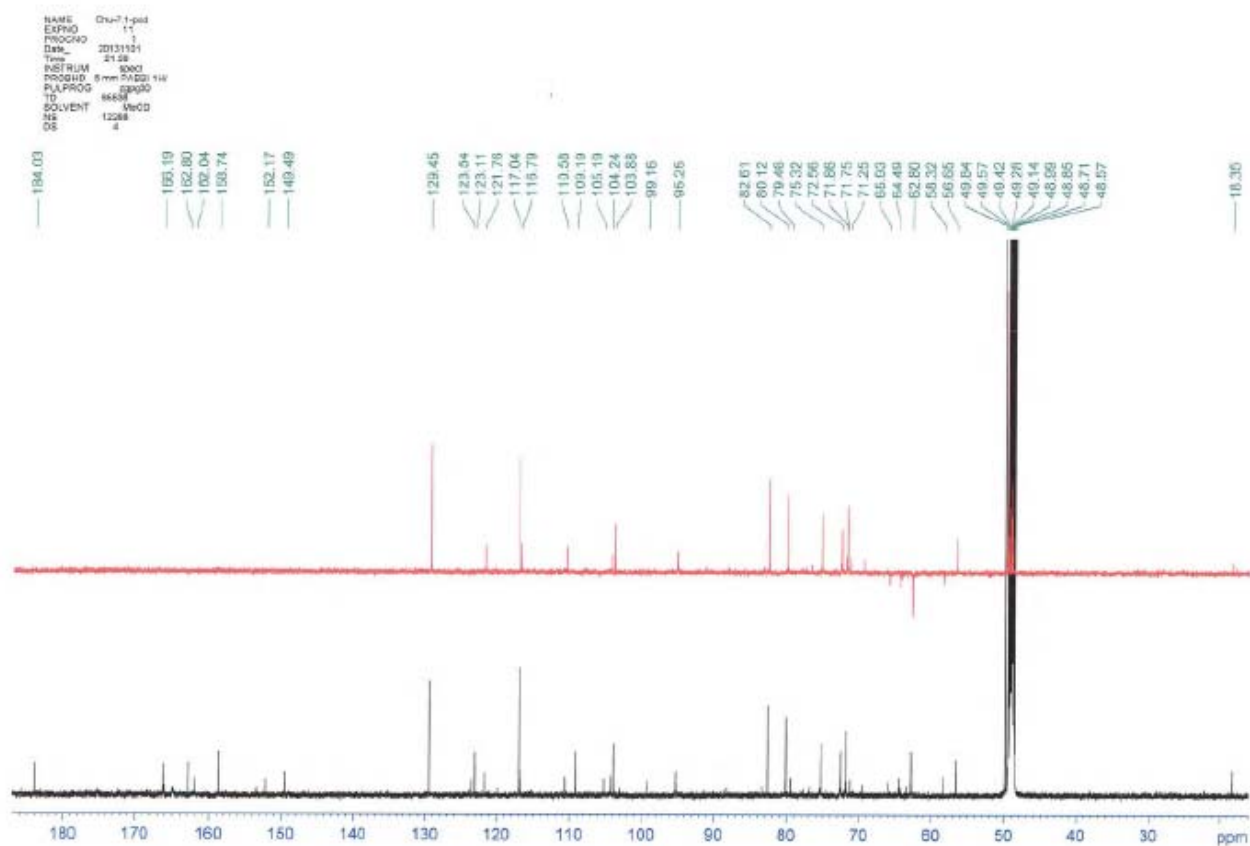
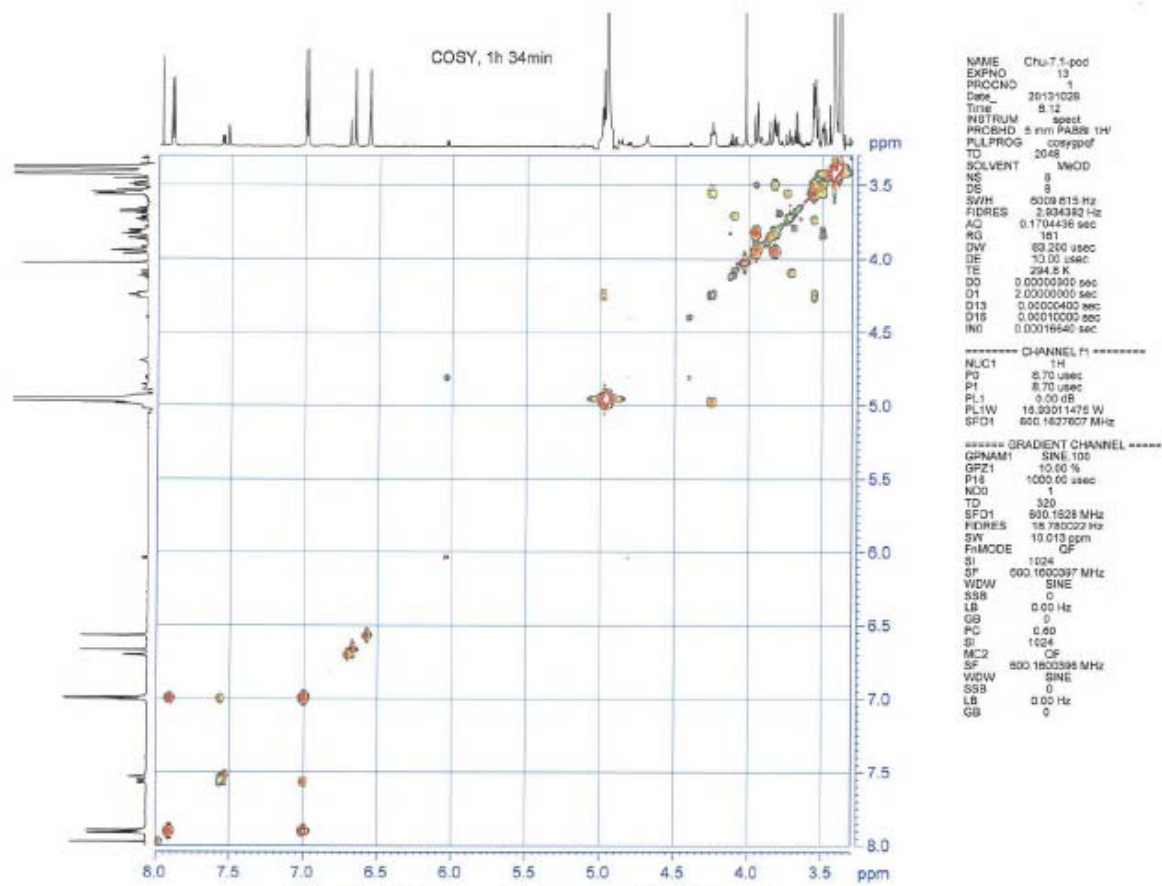
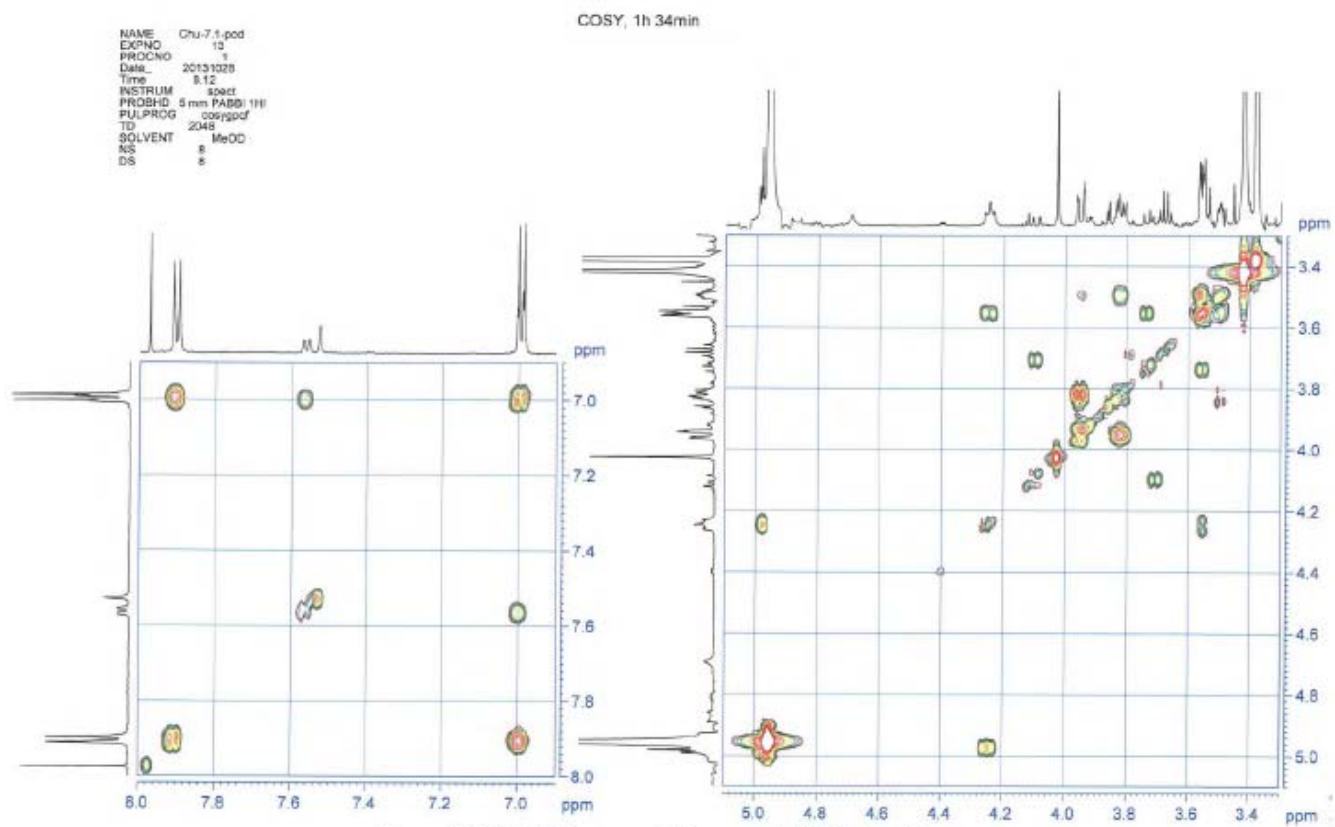


Figure S40.  $^{13}\text{C}$  NMR Spectrum of Compound 4 in Methanol- $d_4$  (150 MHz)



Figure S41. COSY Spectrum of Compound 4 in Methanol-*d*<sub>4</sub>

Figure S42. COSY Spectrum of Compound **4** in Methanol-*d*<sub>4</sub>

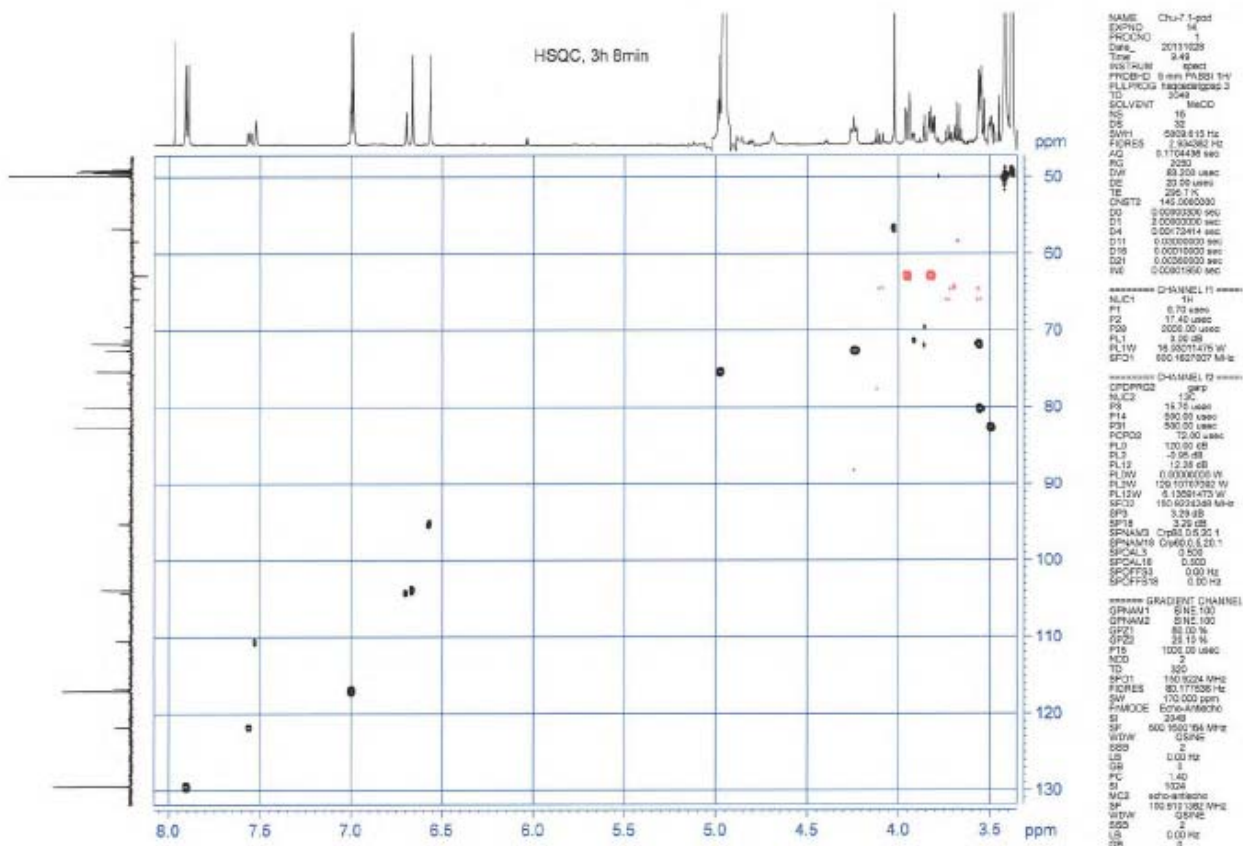
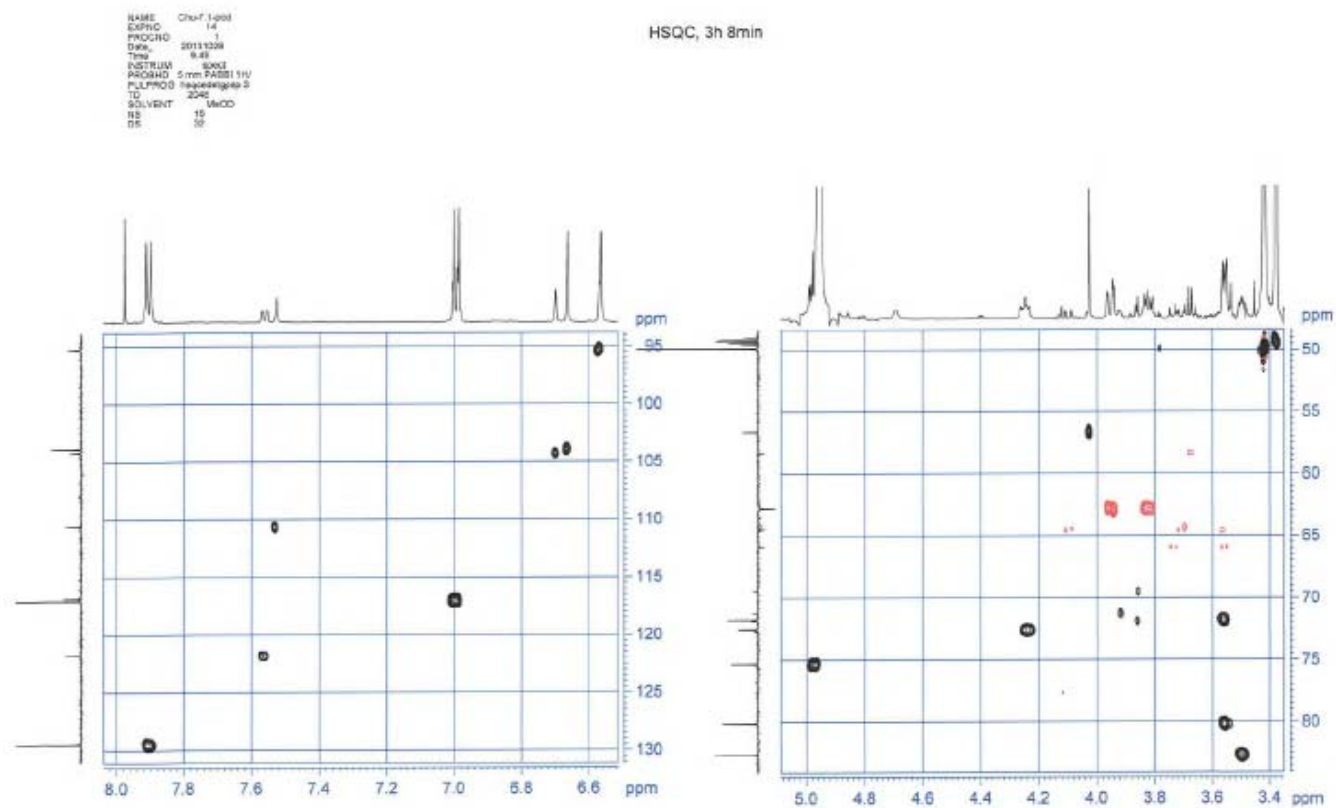
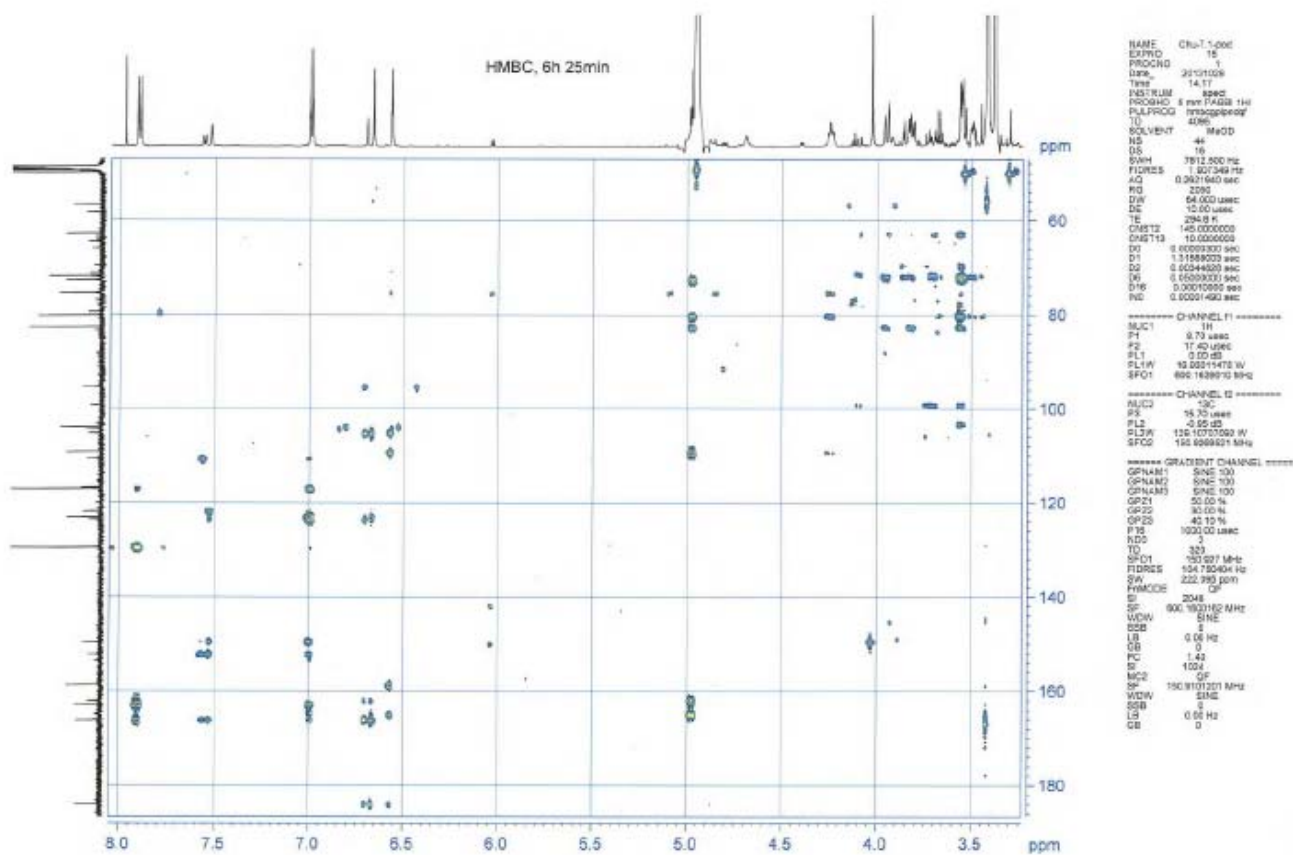


Figure S43. HSQC Spectrum of Compound 4 in Methanol-*d*<sub>4</sub>



Figure S45. HMBC Spectrum of Compound 4 in Methanol- $d_4$

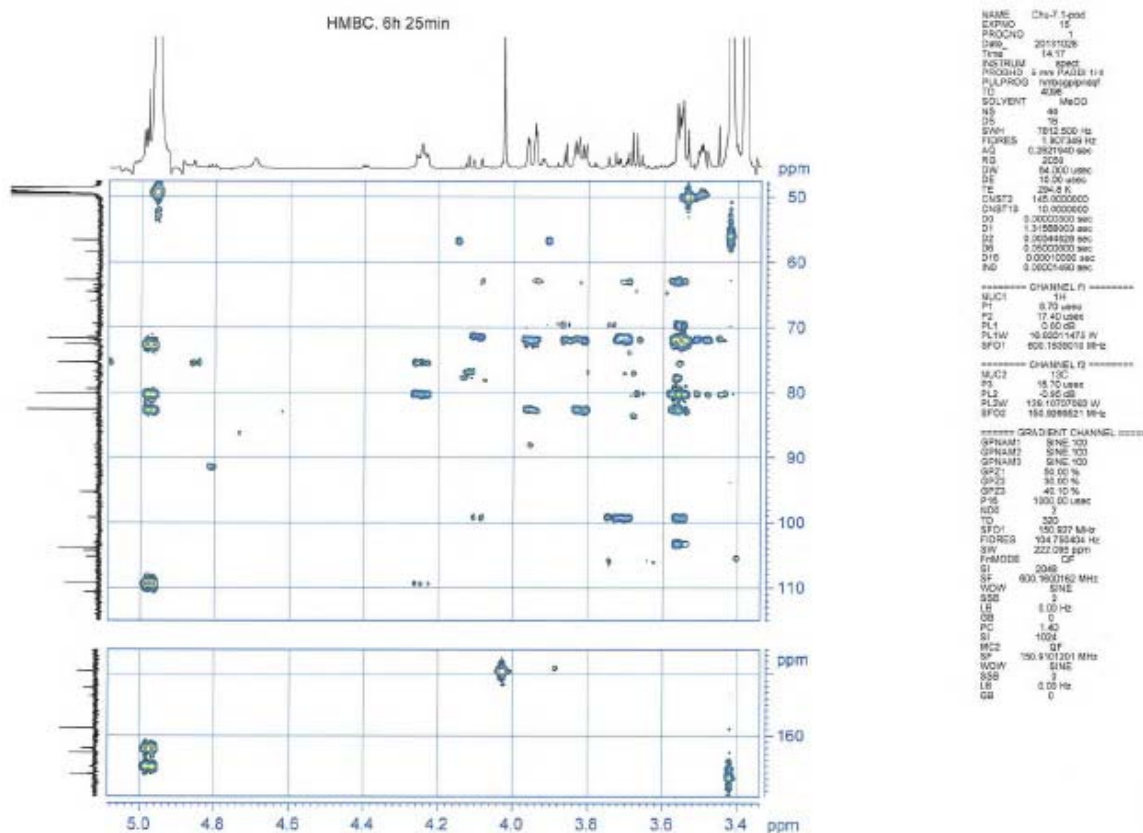
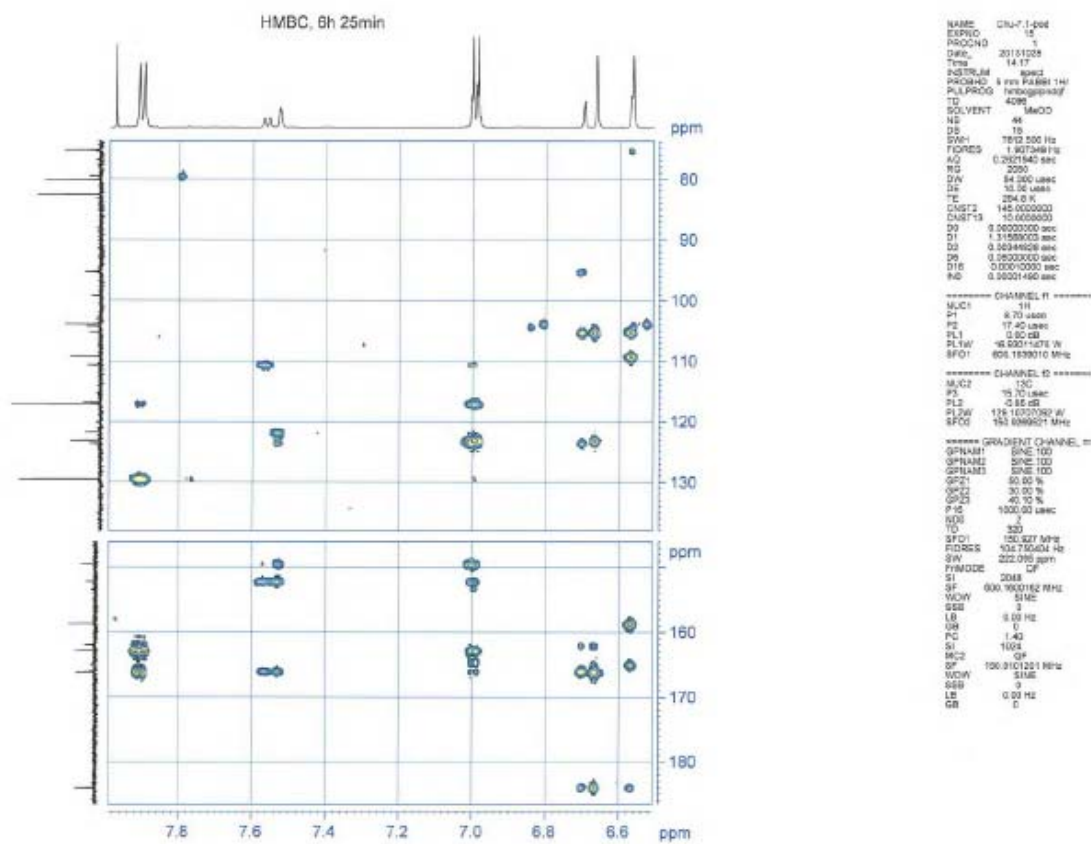


Figure S46. HMBC Spectrum of Compound 4 in Methanol-*d*<sub>4</sub>

Figure S47. HMBC Spectrum of Compound 4 in Methanol- $d_4$

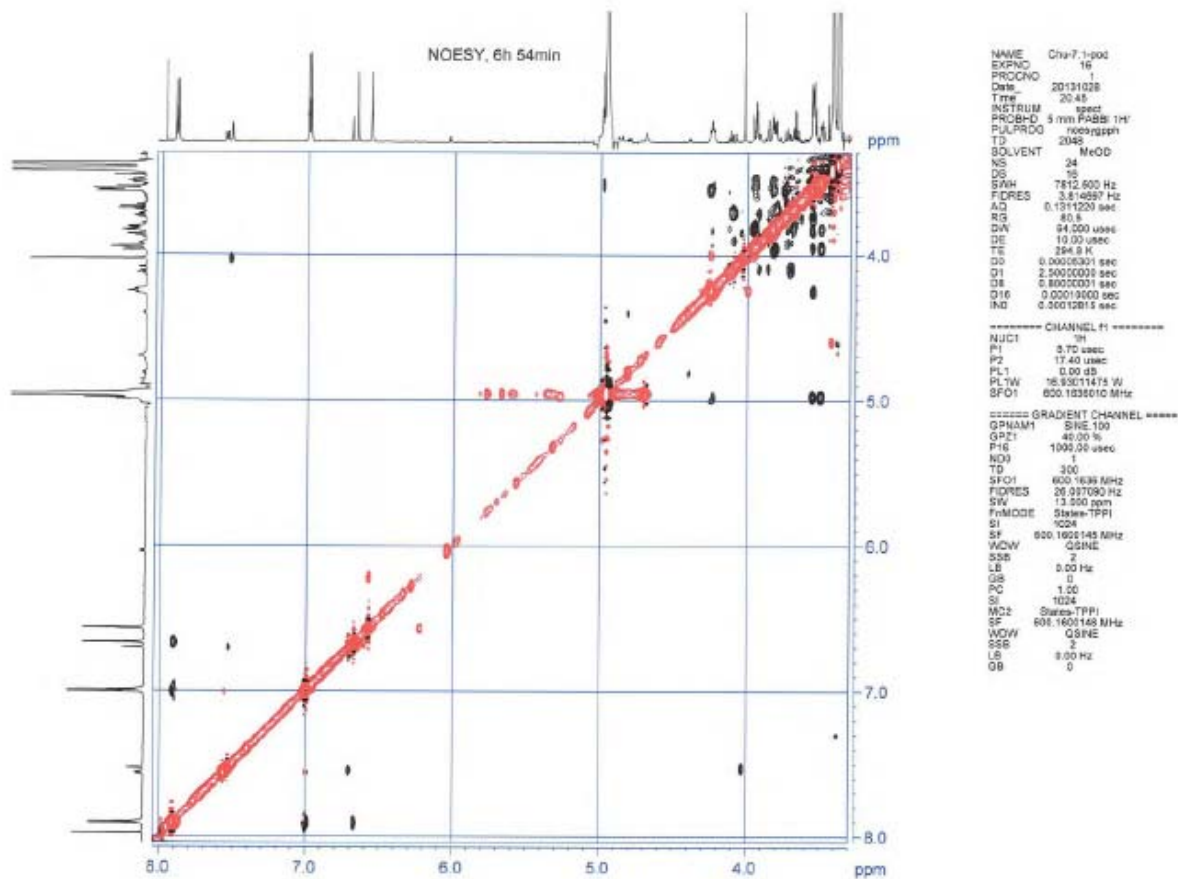
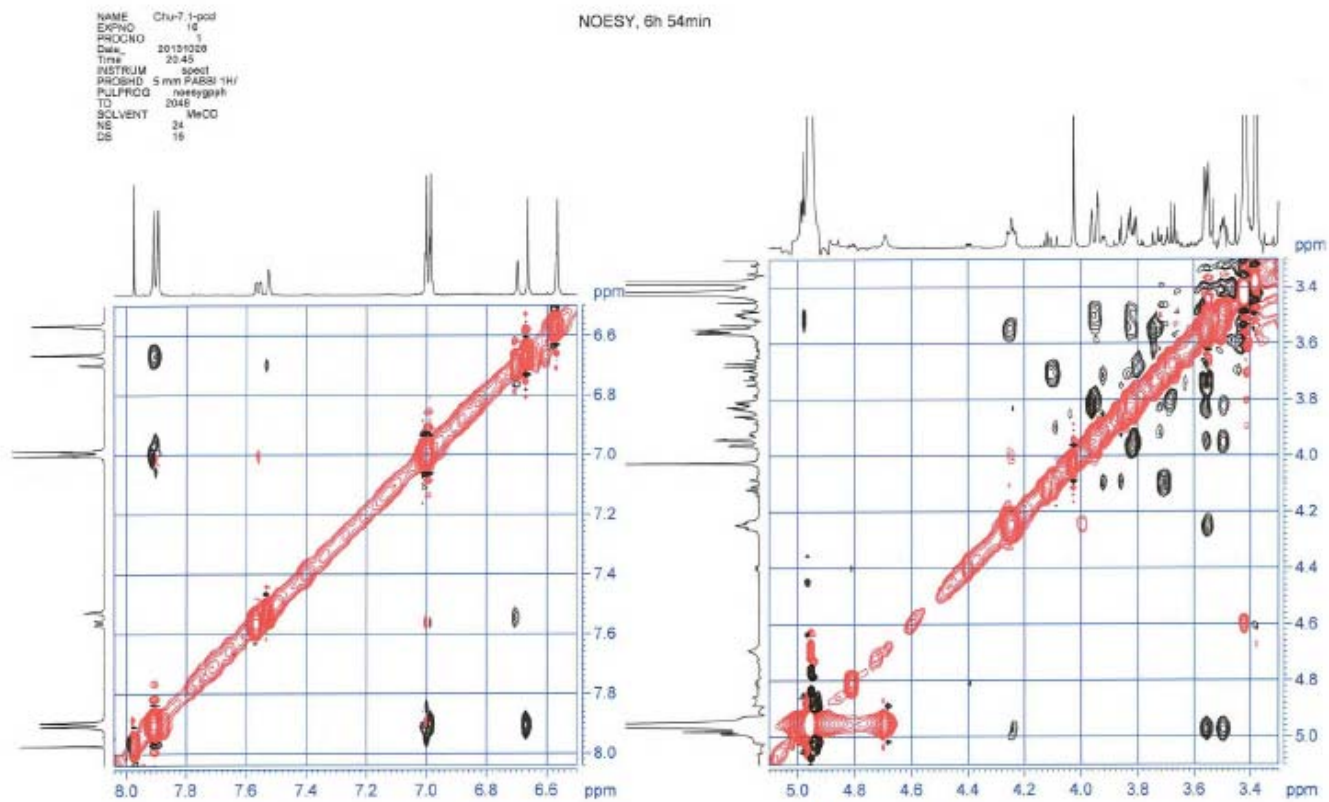


Figure S48. NOESY Spectrum of Compound 4 in Methanol-*d*<sub>4</sub>



Figure S49. NOESY Spectrum of Compound **4** in Methanol- $d_4$

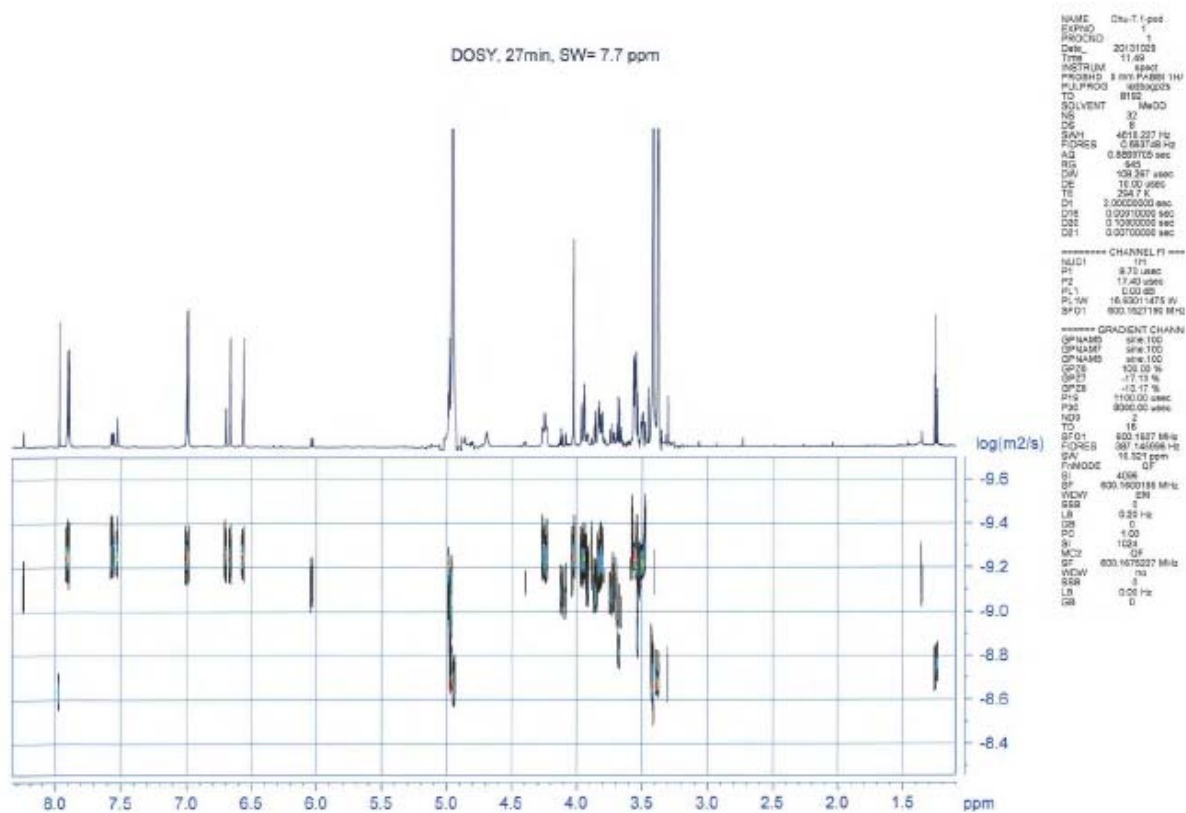


Figure S50. DOSY Spectrum of Compound 4 in Methanol-*d*<sub>4</sub>



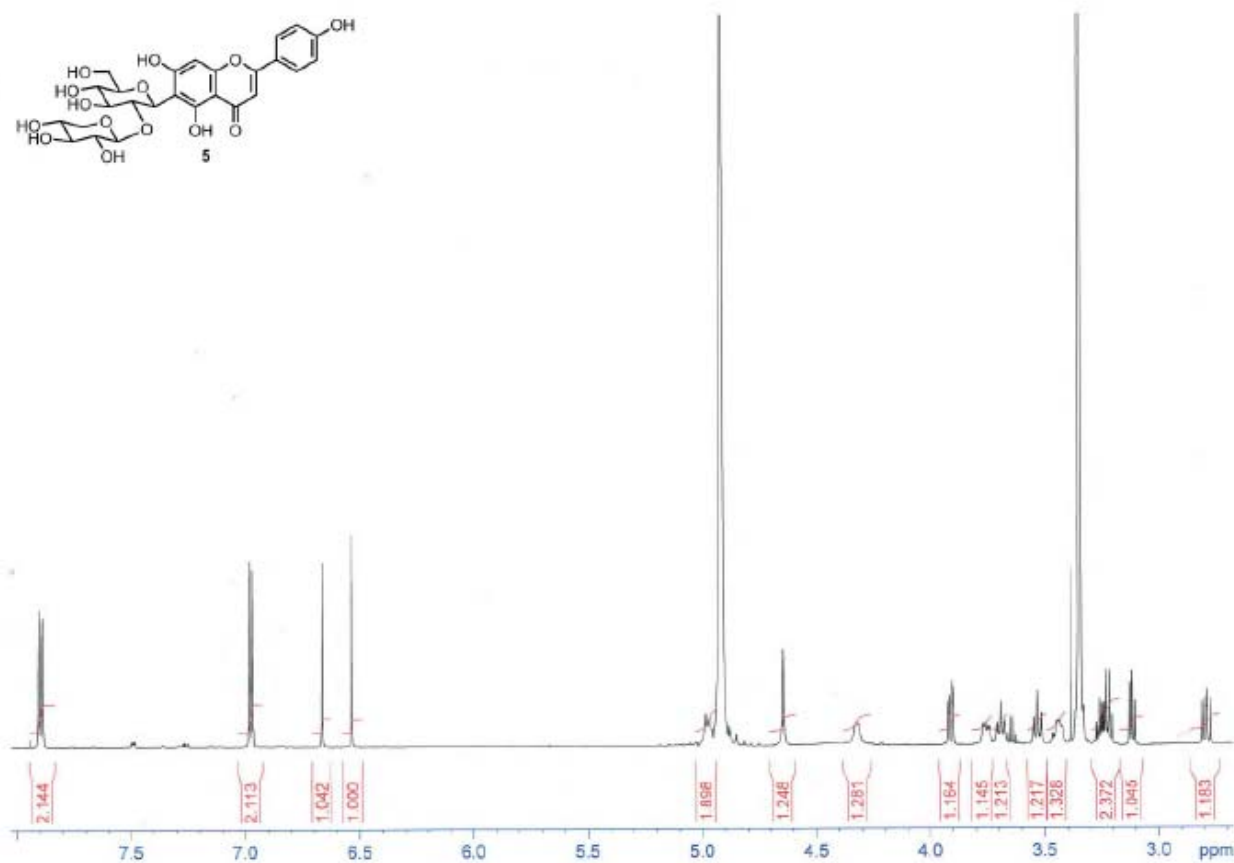
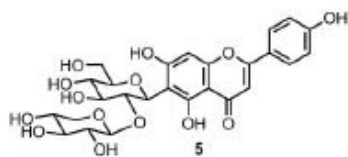
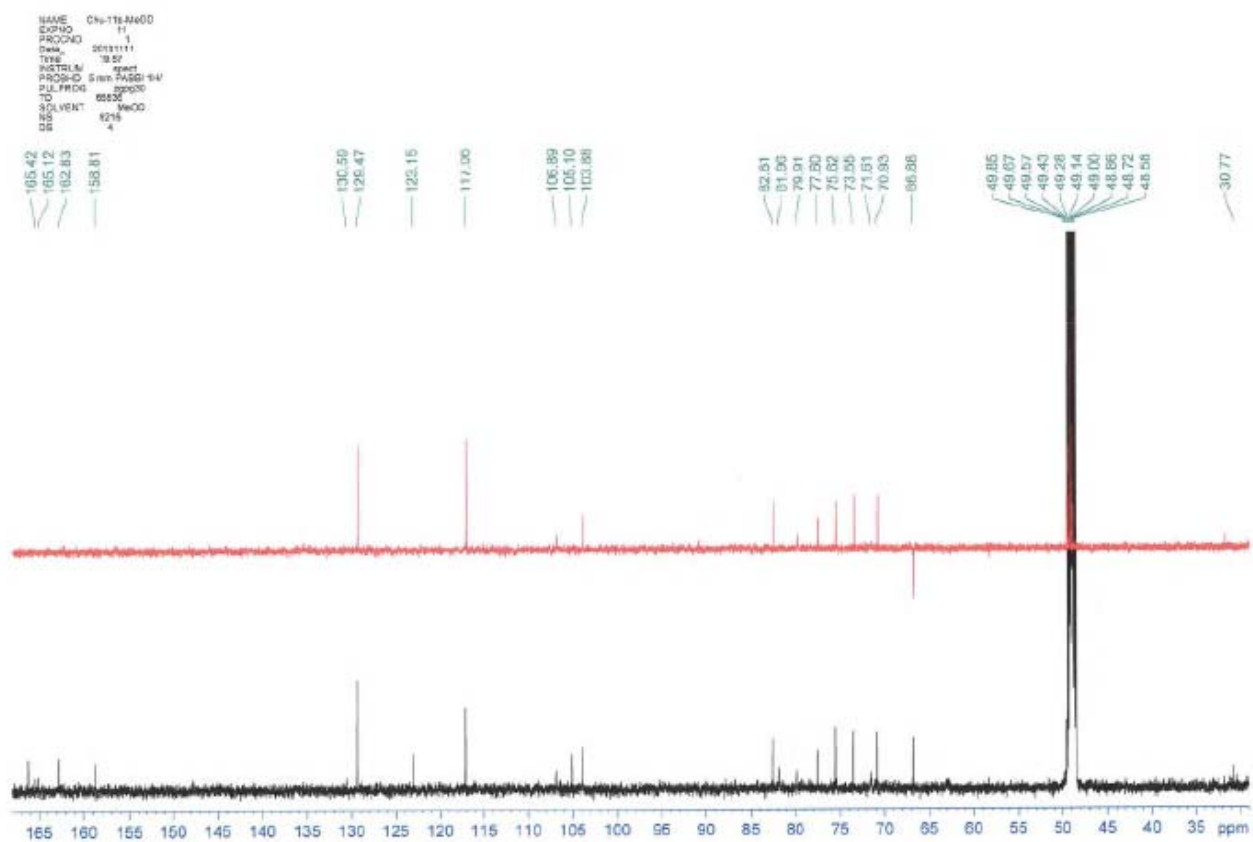


Figure S52.  $^1\text{H}$  NMR Spectrum of Compound **5** in Methanol- $d_4$  (600 MHz)

Figure S53.  $^{13}\text{C}$  NMR Spectrum of Compound 5 in Methanol- $d_4$  (150 MHz)

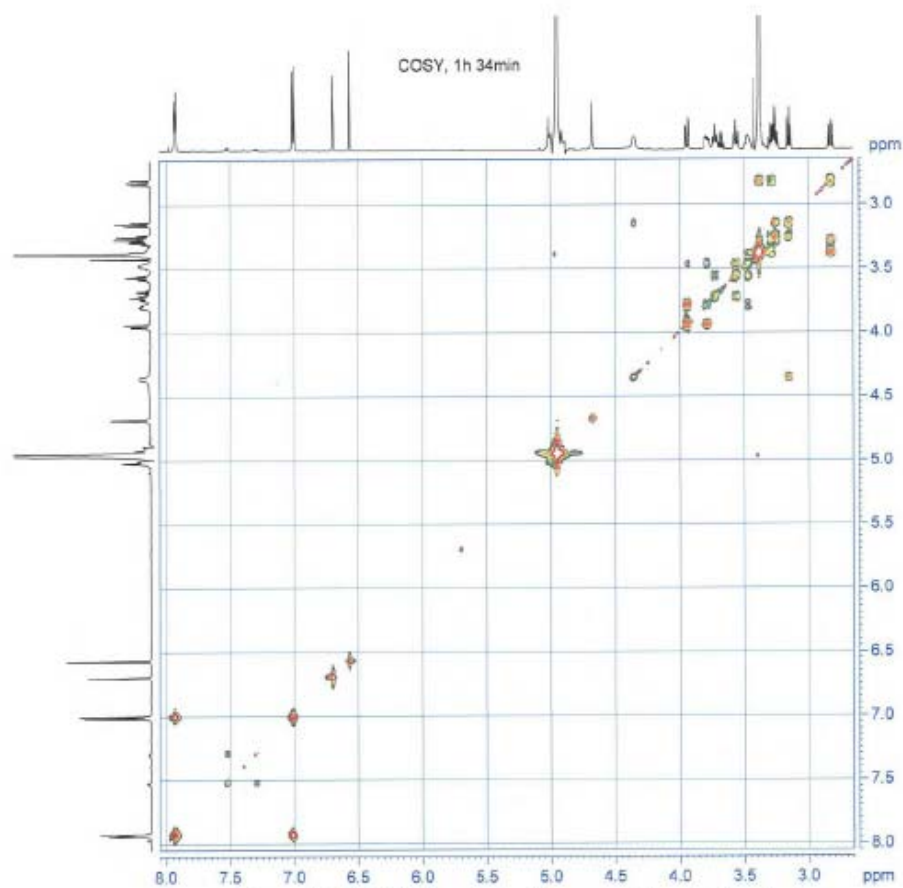
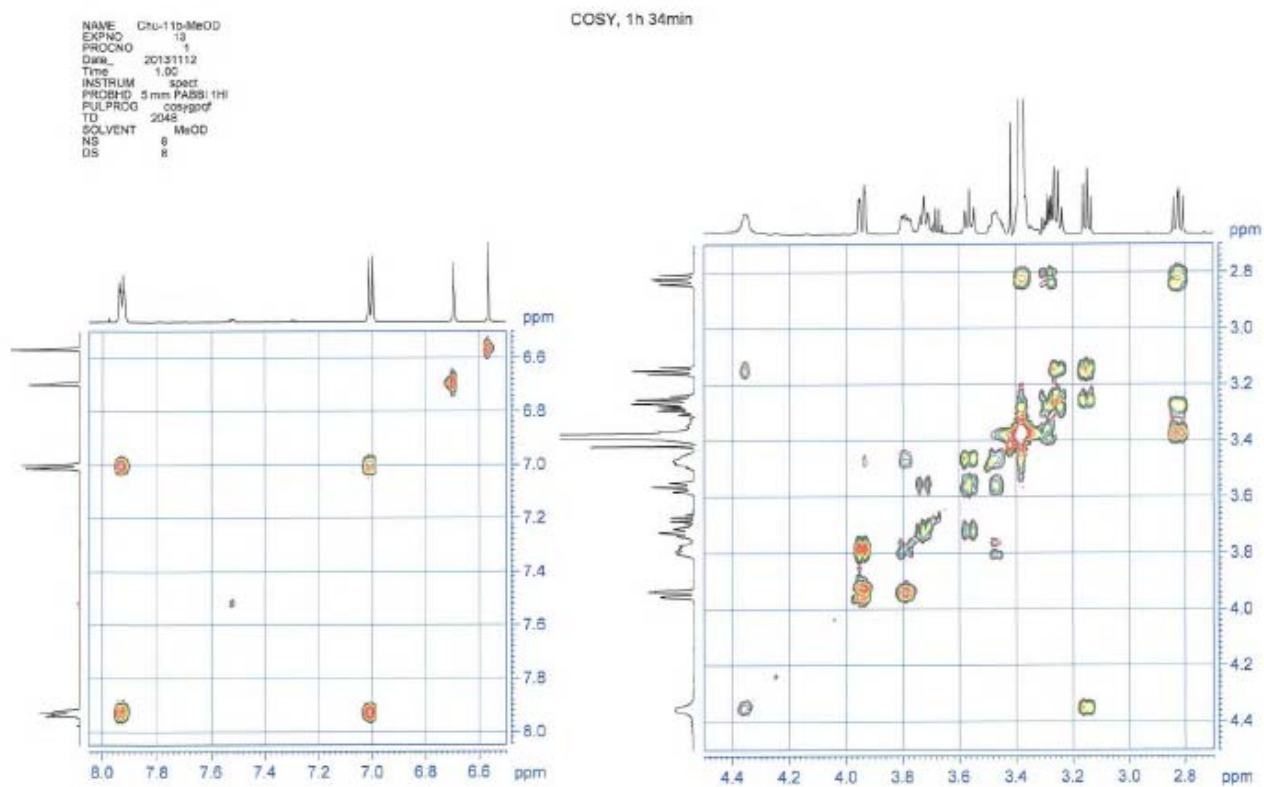


Figure S54. COSY Spectrum of Compound 5 in Methanol-*d*<sub>4</sub>

```

NAME Chu-11b-MeCO
EXPNO 13
PROCNO 1
DATE_ 20131112
Time 1.00
INSTRUM spect
PROBHD 5 mm PABBI 1H/
PULPROG zgpg30
TD 2048
SOLVENT MeOD
NS 8
DS 8
SWH 600.615 Hz
FIDRES 2.934362 Hz
AQ 0.1704496 sec
RG 161
DW 83.200 usec
DE 10.00 usec
TE 295.0 K
D0 0.0000000 sec
D1 2.0000000 sec
D2 0.0000000 sec
D3 0.0000000 sec
D4 0.0000000 sec
D5 0.0000000 sec
D6 0.0000000 sec
D7 0.0000000 sec
D8 0.0000000 sec
D9 0.0000000 sec
===== CHANNEL f1 =====
NUC1 1H
PC 8.70 usec
PI 8.70 usec
PL1 0.00 dB
PL1W 16.93011475 W
SFO1 600.1627907 MHz
===== GRADIENT CHANNEL =====
GPNAM1 SINE 100
GPZ1 10.00 %
pns 1000.00 usec
ND0 1
TD 320
SFO1 600.1628 MHz
FIDRES 18.785022 Hz
SW 10.013 ppm
FrMODE DF
SI 1024
SF 600.1600160 MHz
WCVW SINE
SSB 0
LB 0.00 Hz
GB 0
PC 0.00
SI 1024
MC2 CF
SF 600.1600178 MHz
WCVW SINE
SSB 0
LB 0.00 Hz
GB 0
    
```

Figure S55. COSY Spectrum of Compound **5** in Methanol- $d_4$

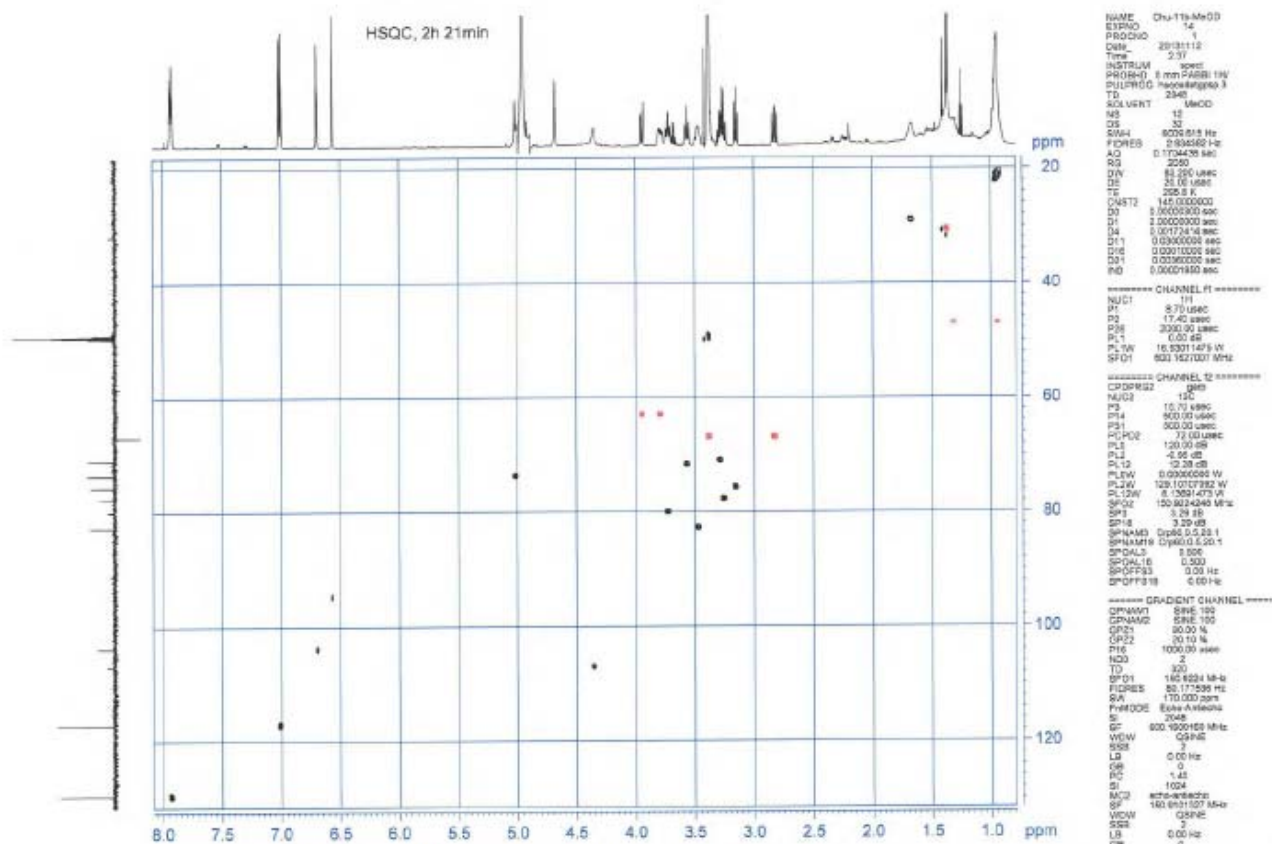
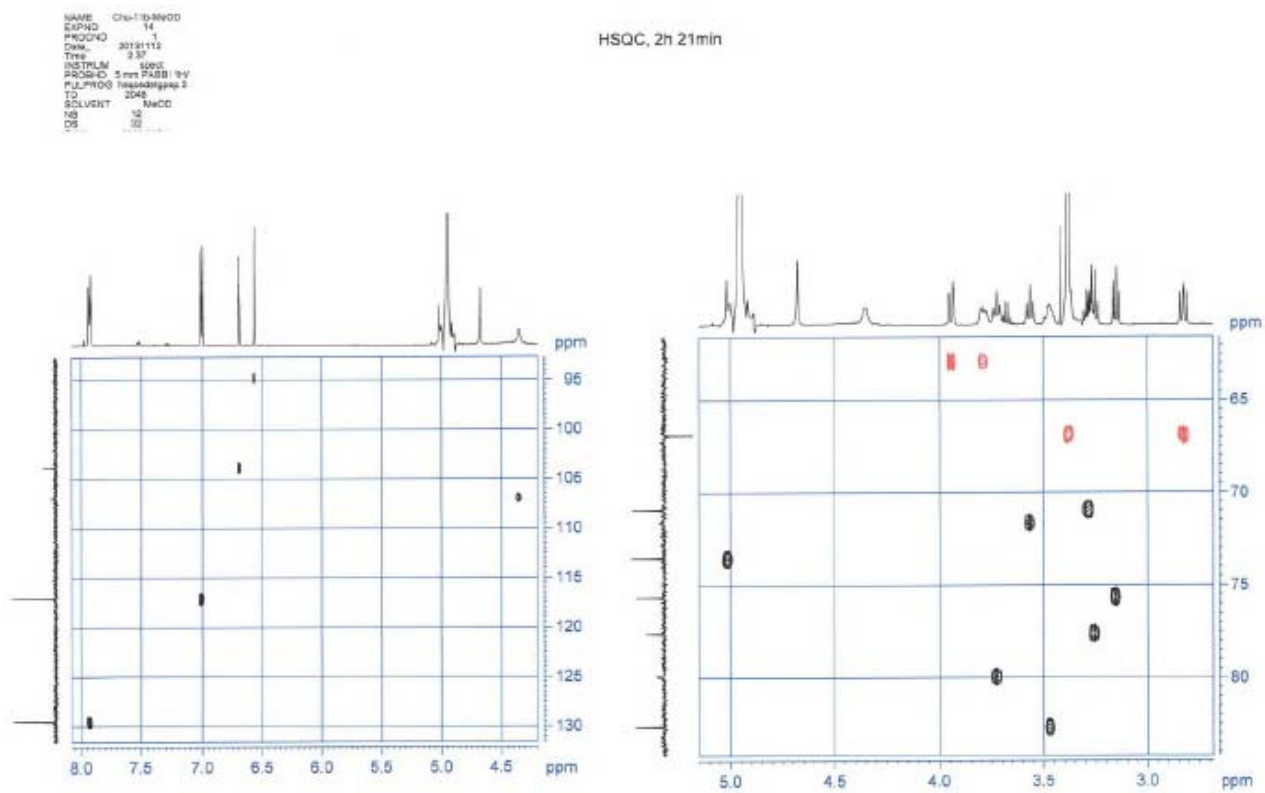


Figure S56. HSQC Spectrum of Compound 5 in Methanol-*d*<sub>4</sub>





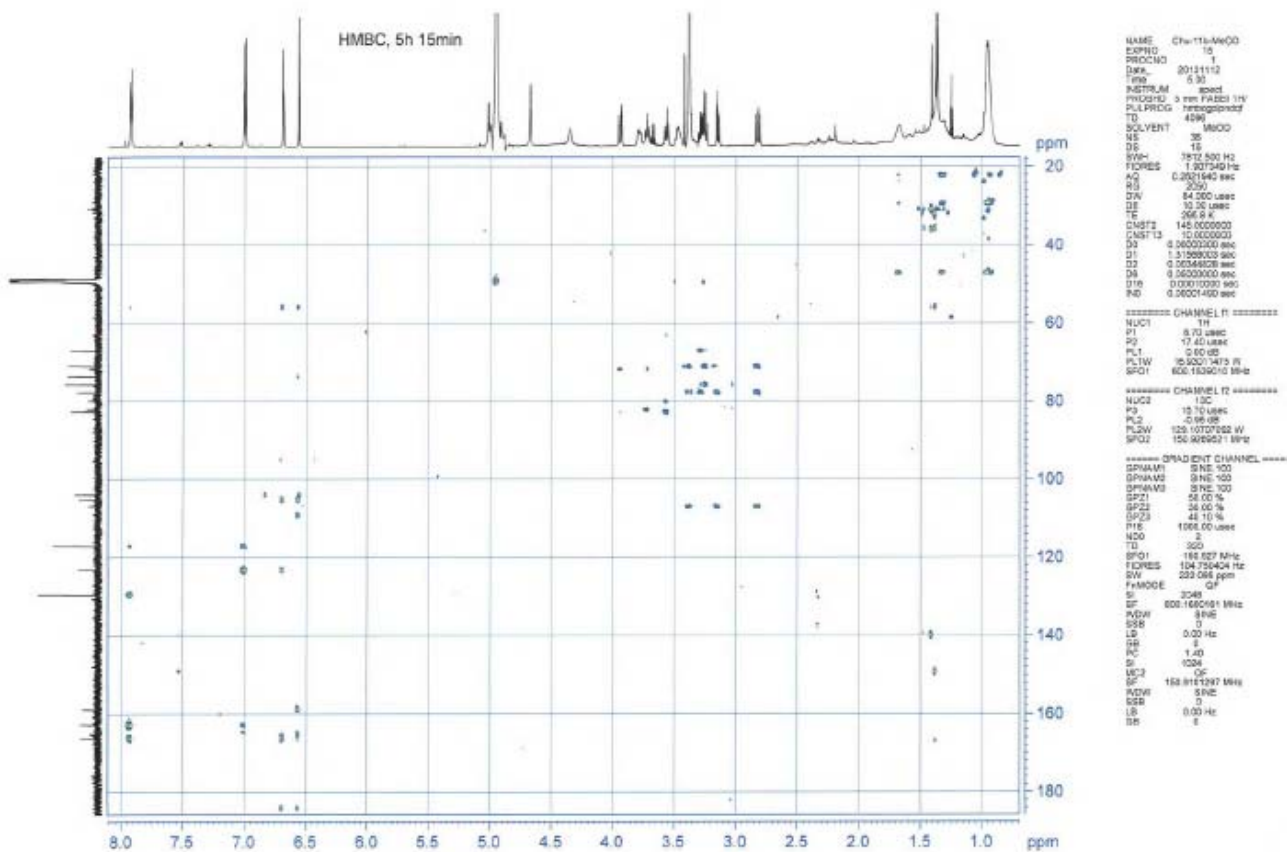


Figure S58. HMBC Spectrum of Compound 5 in Methanol-*d*<sub>4</sub>





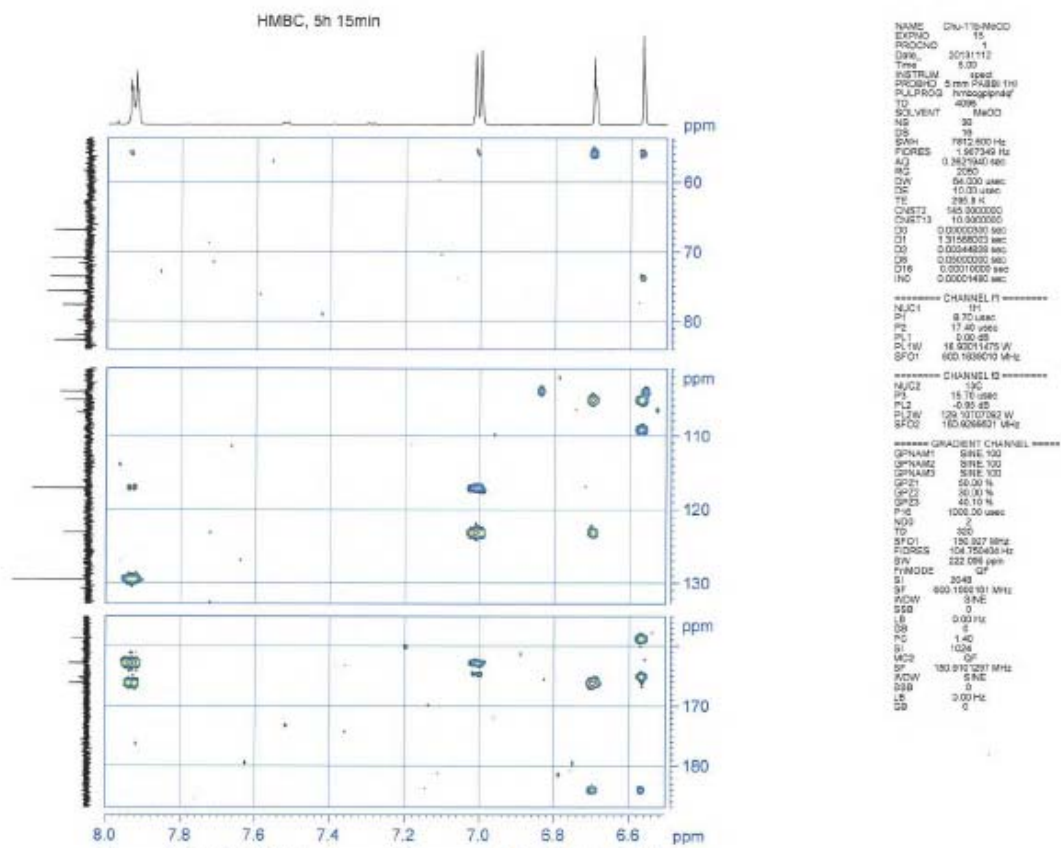


Figure S61. HMBC Spectrum of Compound 5 in Methanol-*d*<sub>4</sub>

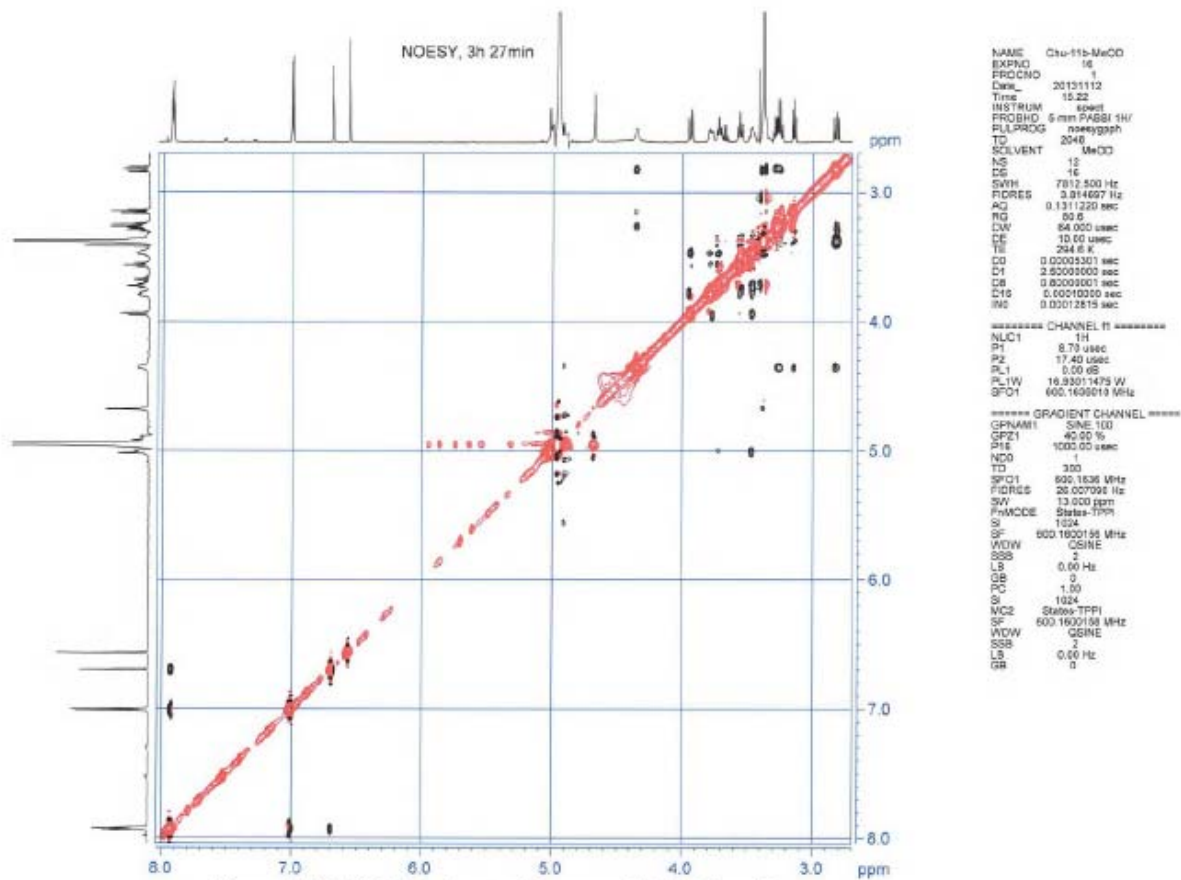
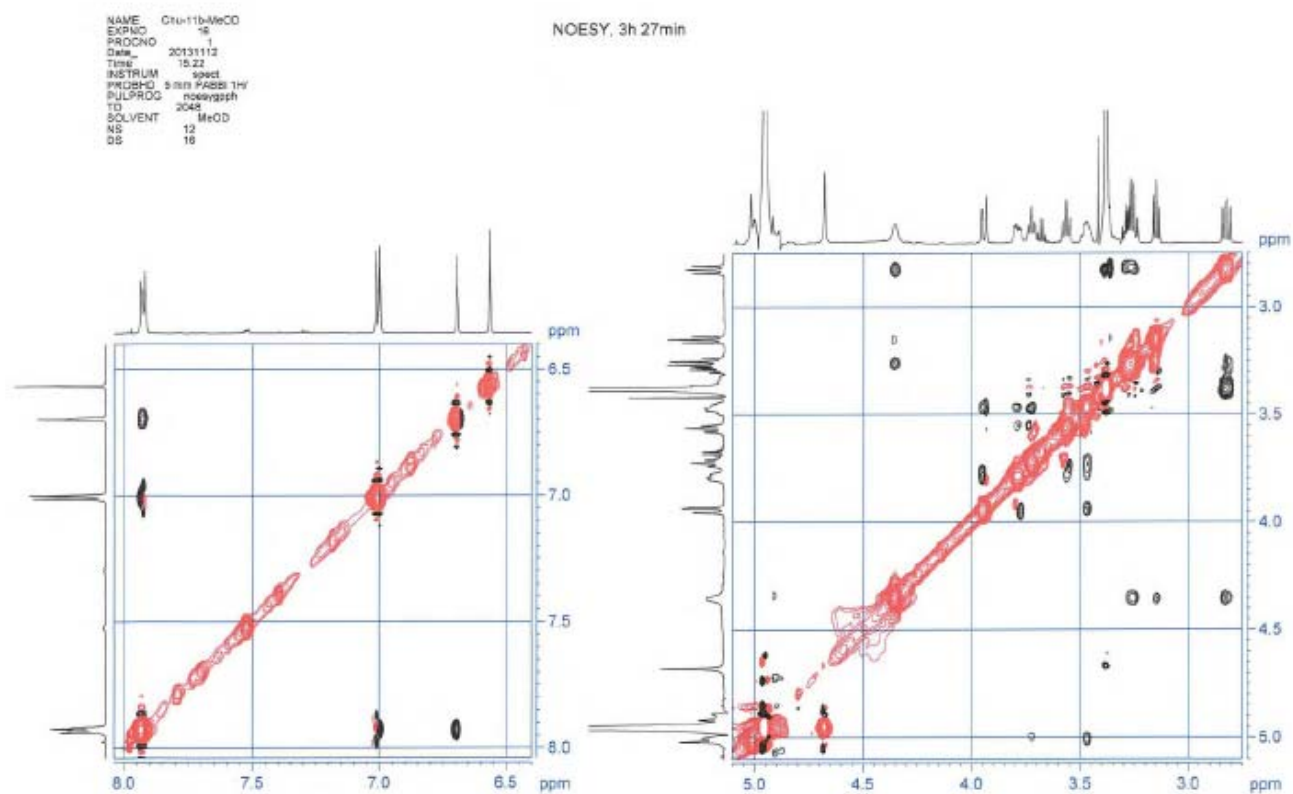


Figure S62. NOESY Spectrum of Compound 5 in Methanol-*d*<sub>4</sub>

Figure S63. NOESY Spectrum of Compound 5 in Methanol- $d_4$

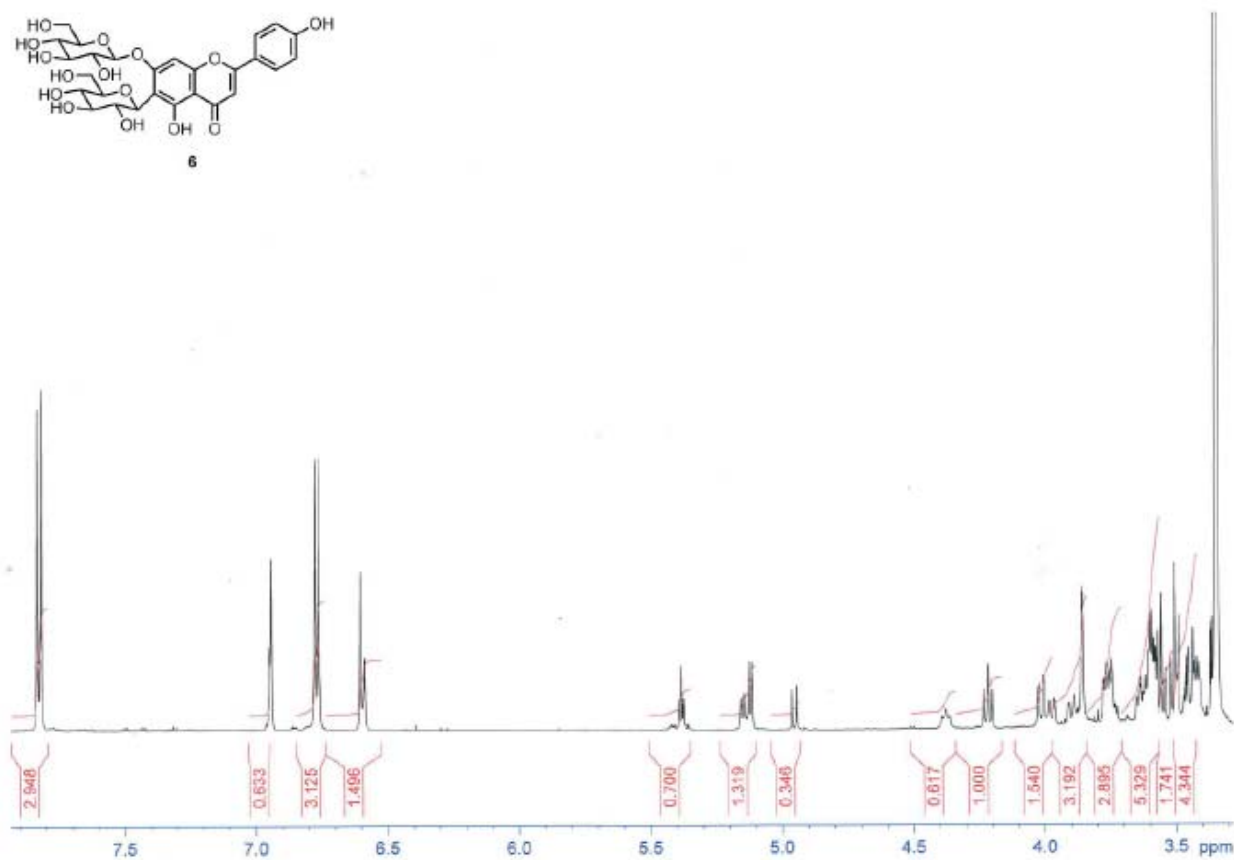
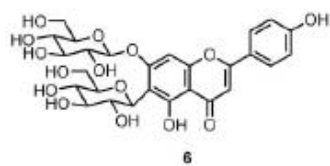
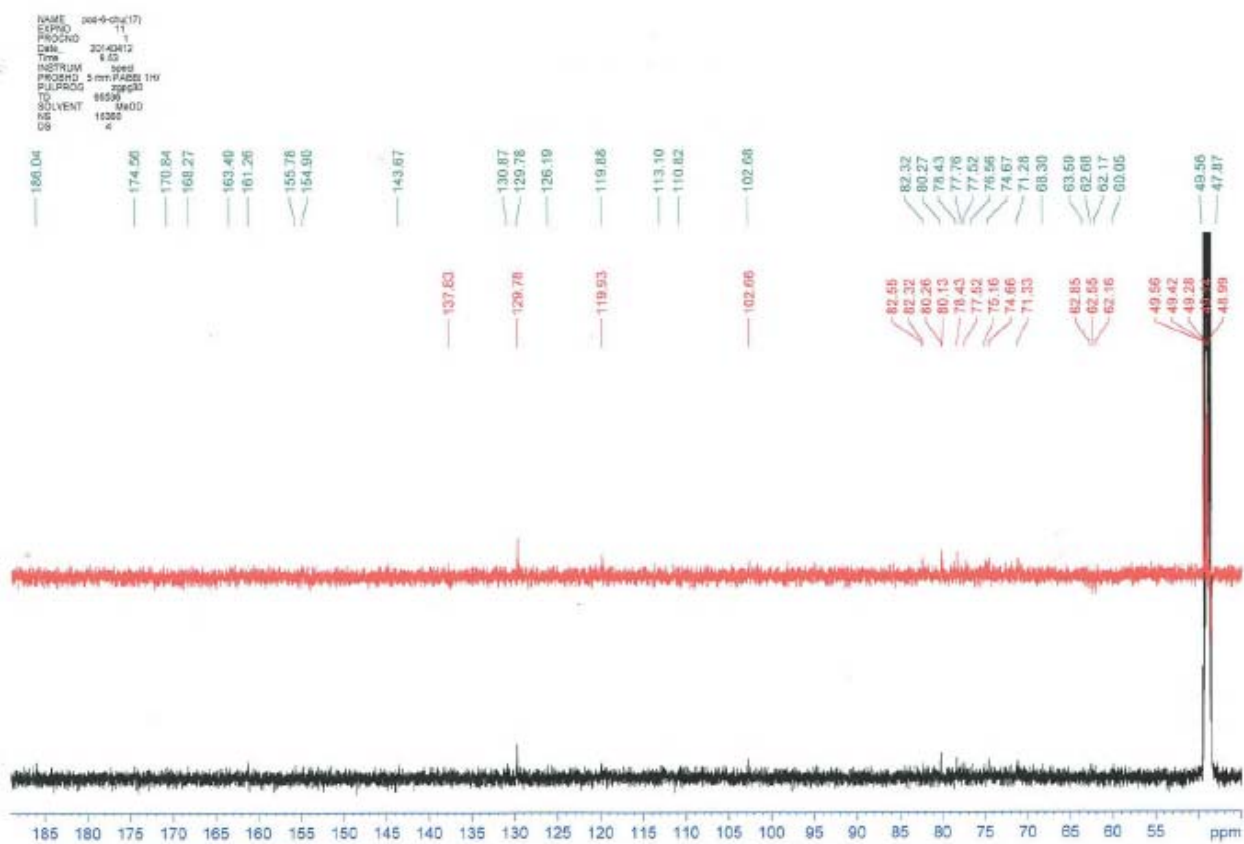


Figure S64. <sup>1</sup>H NMR Spectrum of Compound 6 in Methanol-*d*<sub>4</sub> (600 MHz)



Figure S65.  $^{13}\text{C}$  NMR Spectrum of Compound 6 in Methanol- $d_4$  (150 MHz)

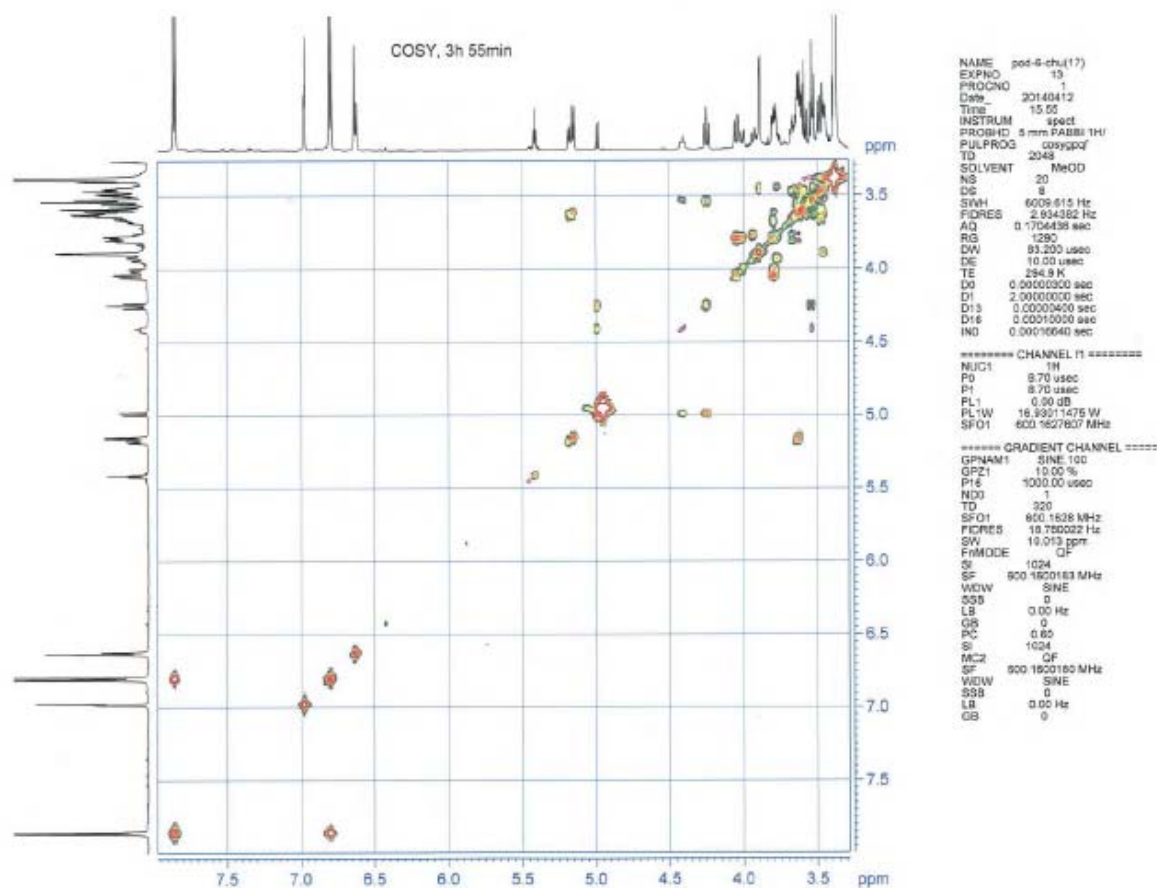
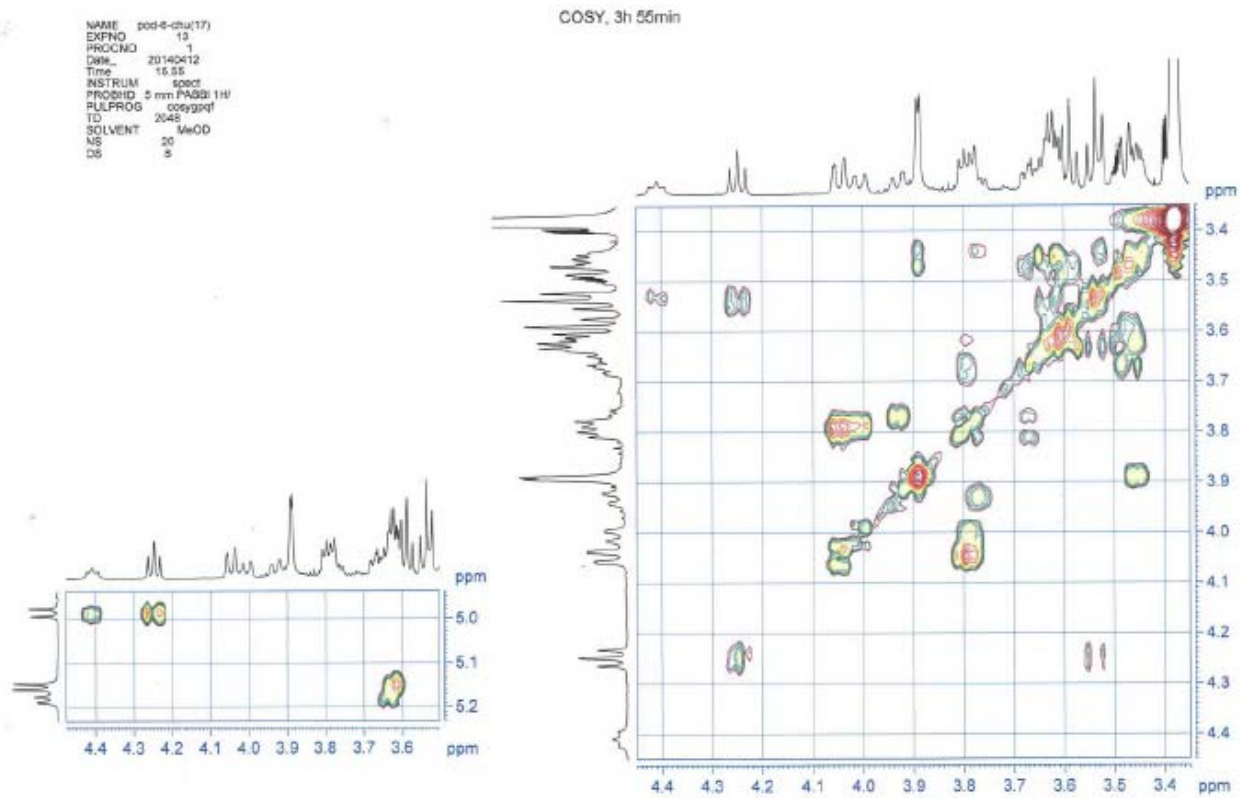


Figure S66. COSY Spectrum of Compound 6 in Methanol-*d*<sub>4</sub>

Figure S67. COSY Spectrum of Compound 6 in Methanol- $d_4$





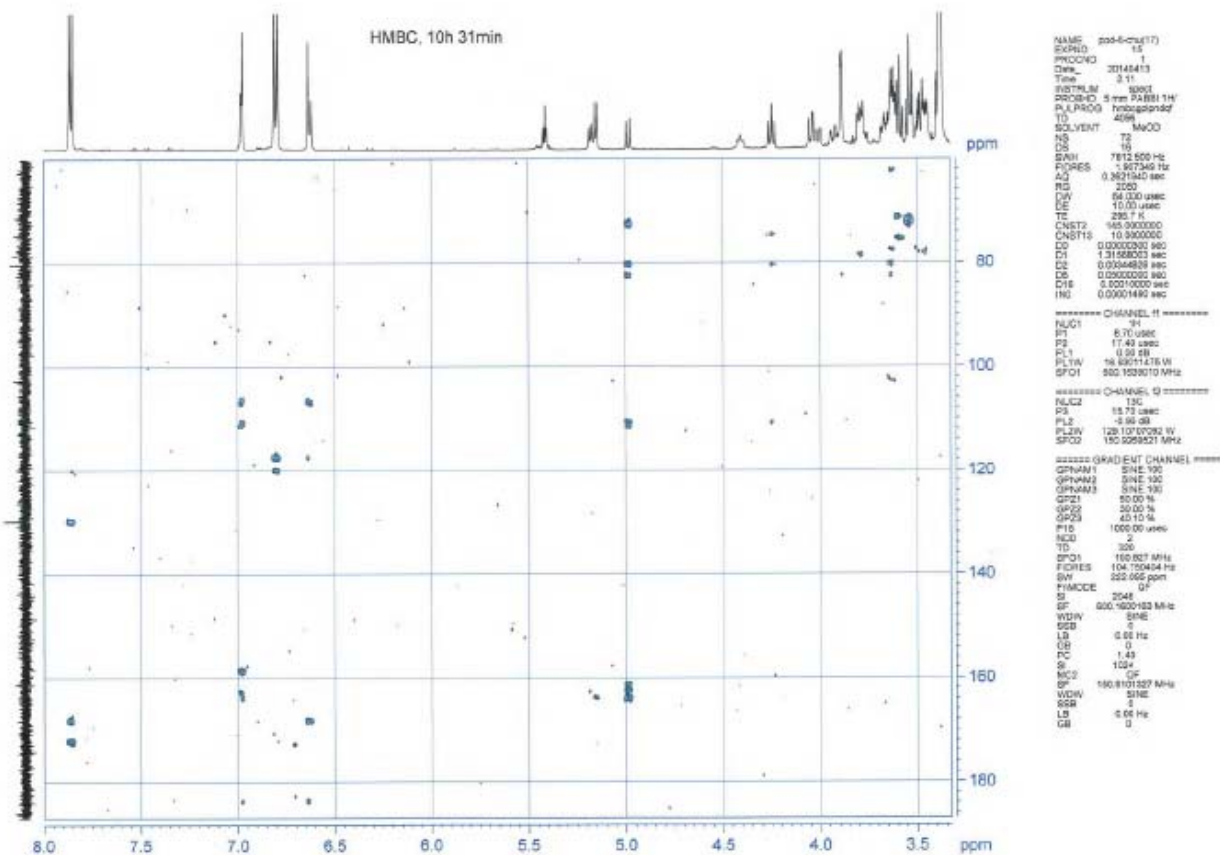


Figure S70. HMBC Spectrum of Compound 6 in Methanol-*d*<sub>4</sub>



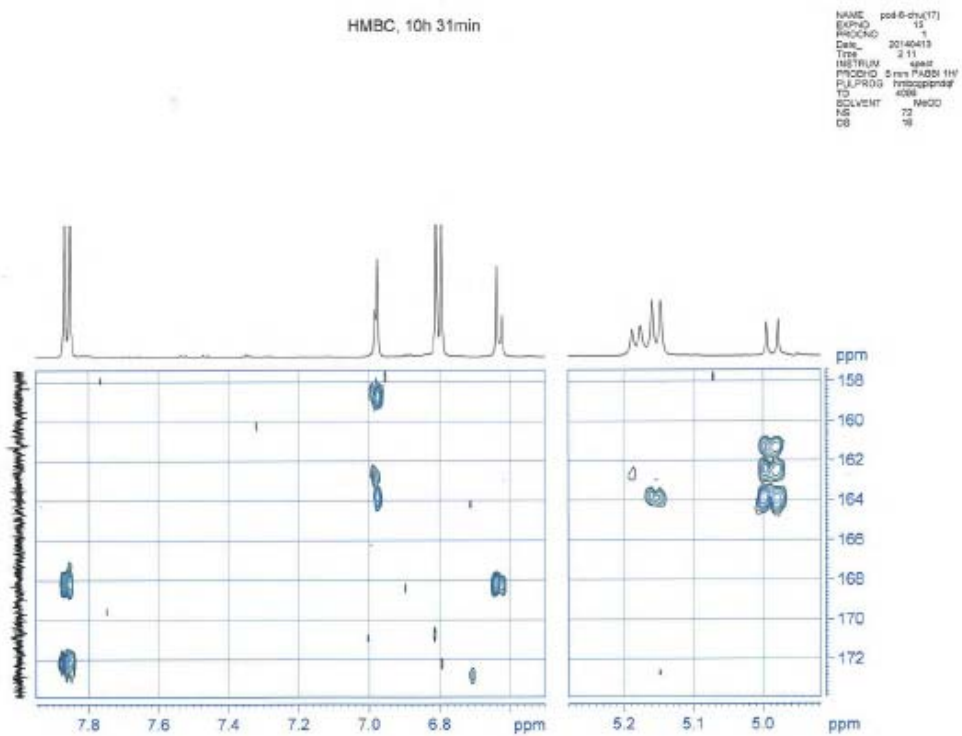


Figure S72. HMBC Spectrum of Compound 6 in Methanol-*d*<sub>4</sub>





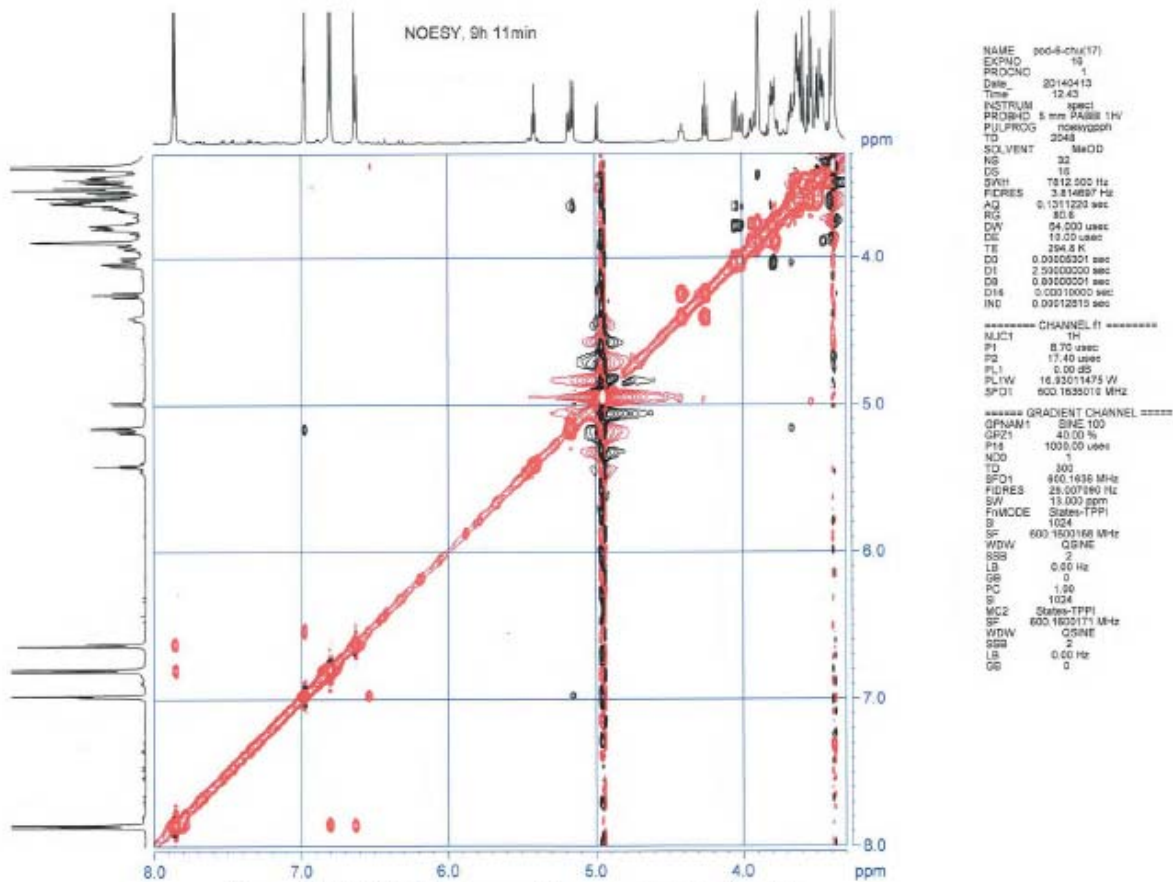
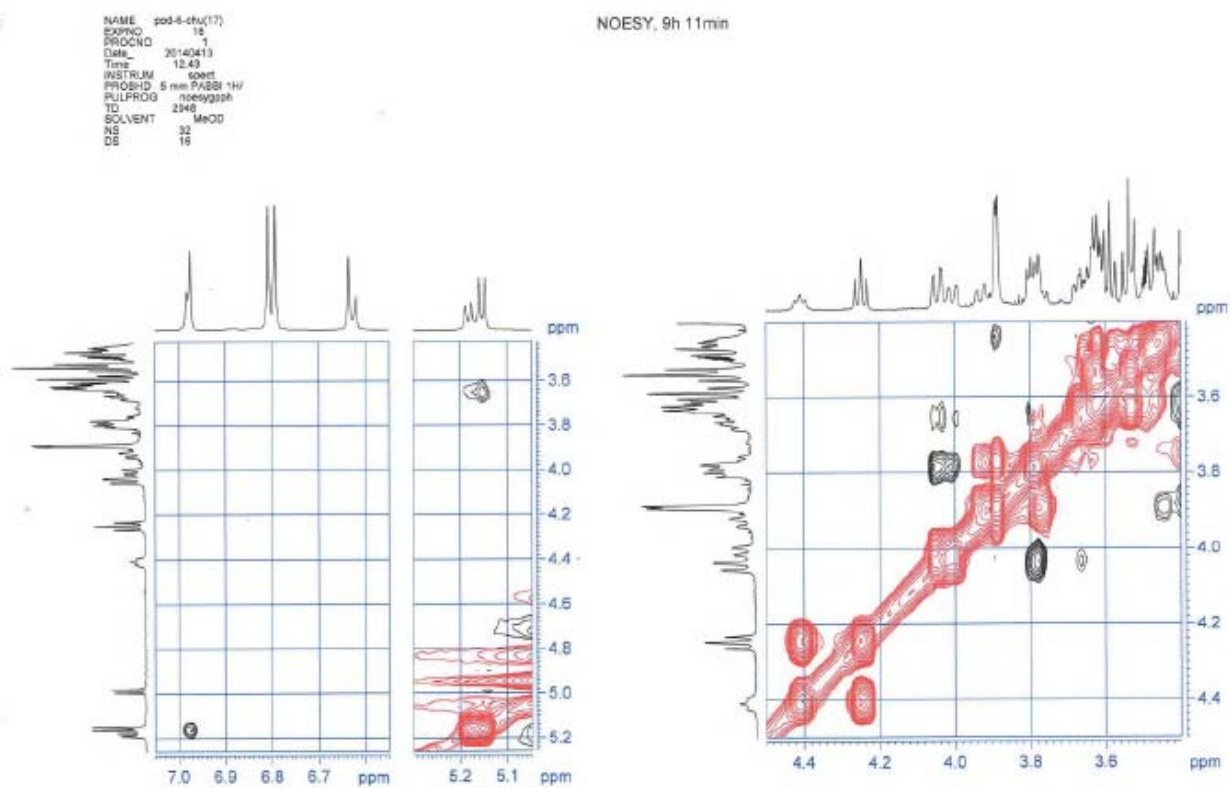


Figure S74. NOESY Spectrum of Compound 6 in Methanol-*d*<sub>4</sub>

Figure S75. NOESY Spectrum of Compound 6 in Methanol-*d*<sub>4</sub>

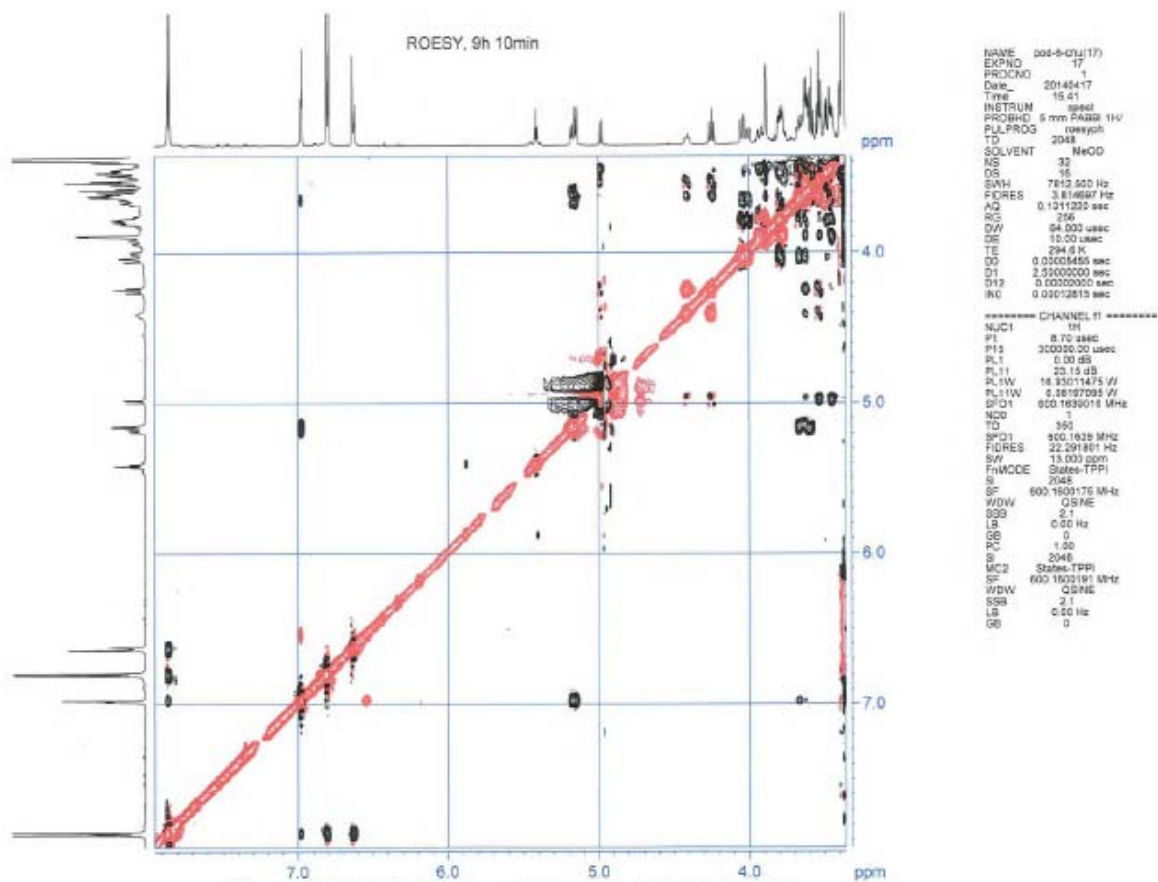
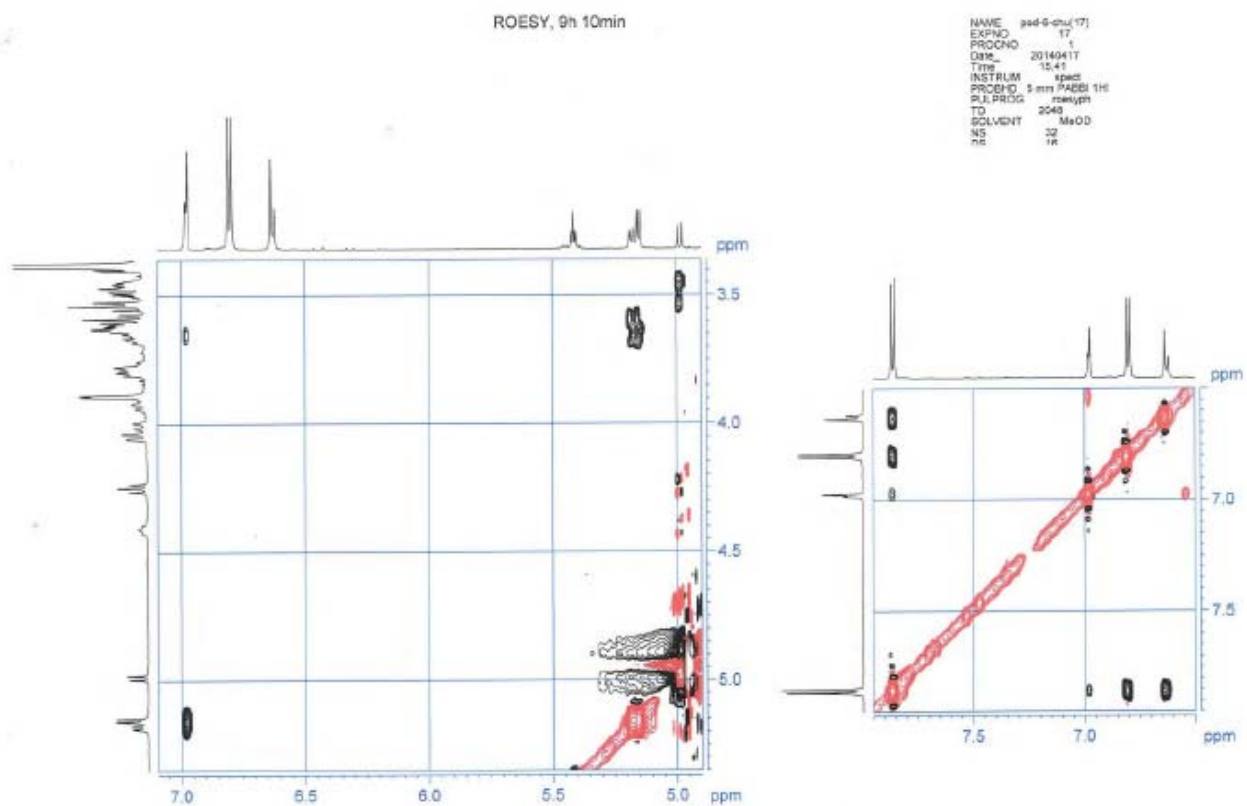


Figure S76. ROESY Spectrum of Compound 6 in Methanol-*d*<sub>4</sub>

Figure S77. ROESY Spectrum of Compound 6 in Methanol- $d_4$

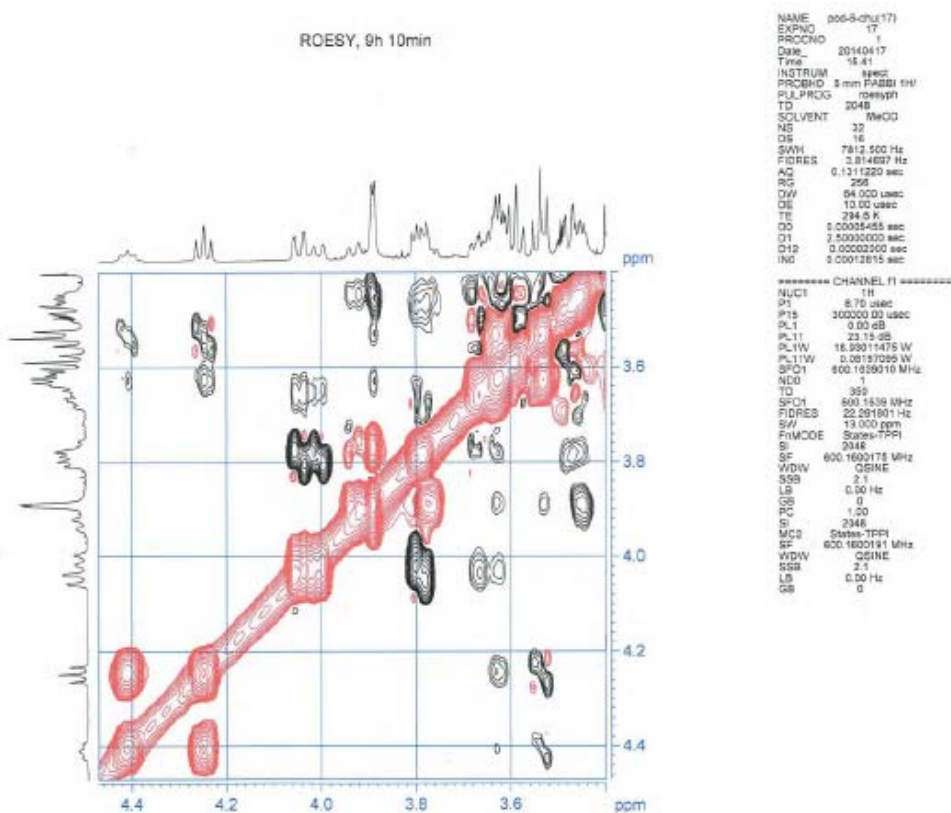
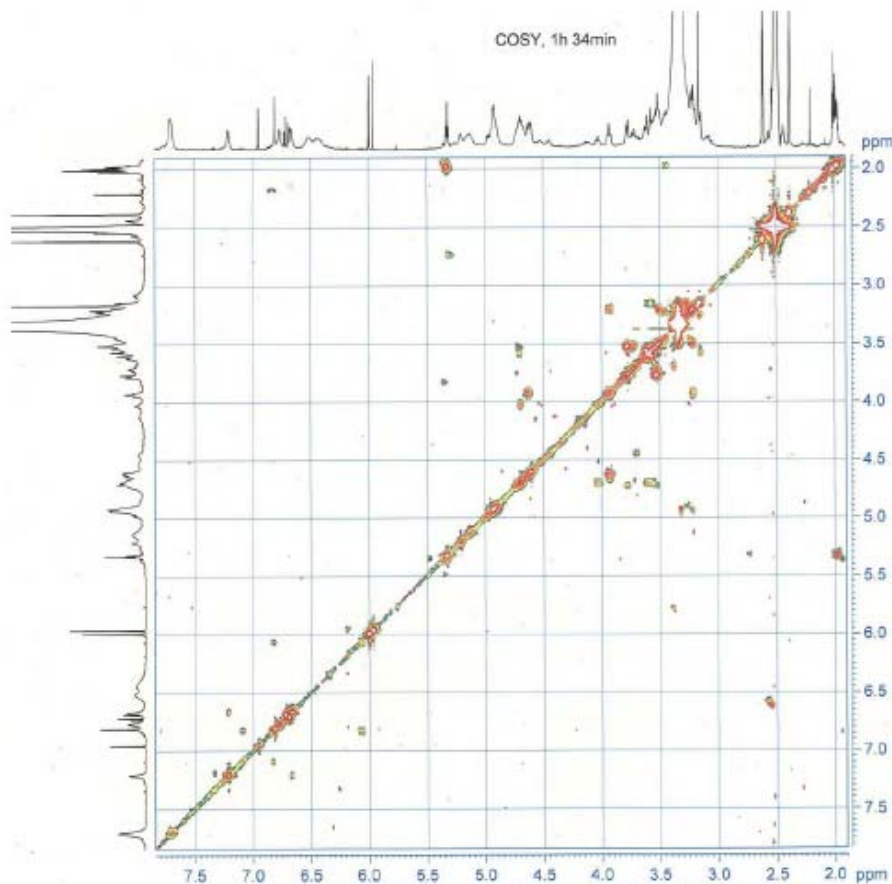


Figure S78. ROESY Spectrum of Compound 6 in Methanol-*d*<sub>4</sub>







```

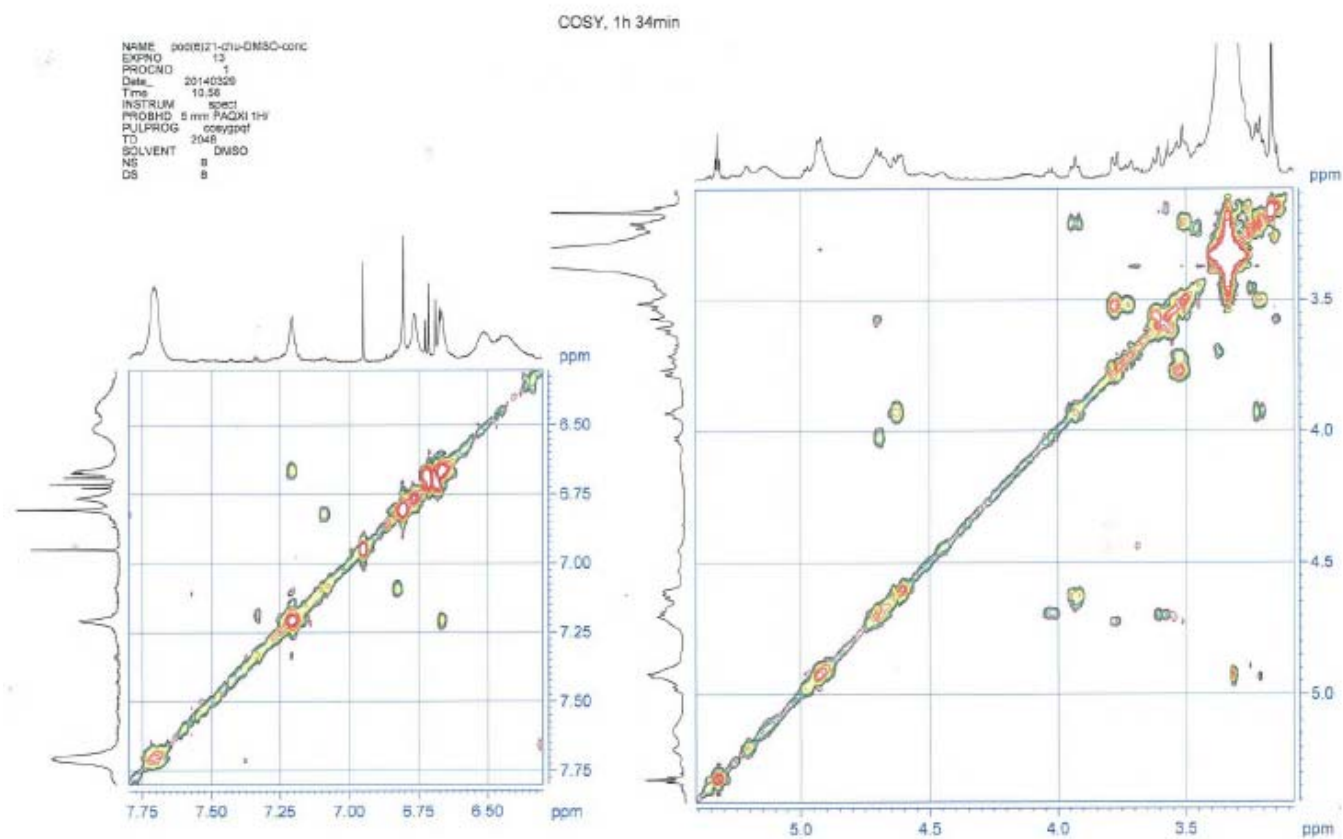
NAME podj021-chu-DMSO-core
EXPNO 13
PROCNO 1
Date_ 20140229
Time 10.55
INSTRUM spect
PROBHD 5 mm PAZ00 1H
PULPROG zgpg30
TD 2048
SOLVENT DMSO
NS 8
DS 8
SWH 600.815 Hz
FIDRES 2.94302 Hz
AQ 0.1704436 sec
RG 612
DW 83.250 usec
DE 10.00 usec
TE 295.0 K
DQ 0.0000000 sec
D1 2.0000000 sec
D13 0.0300040 sec
D16 0.0302000 sec
NS 0.0019540 sec

===== CHANNEL f1 =====
NUC1 1H
PC 8.40 usec
P1 8.40 usec
PL1 0.00 dB
PL1W 10.00011475 W
SFO1 600.1827607 MHz

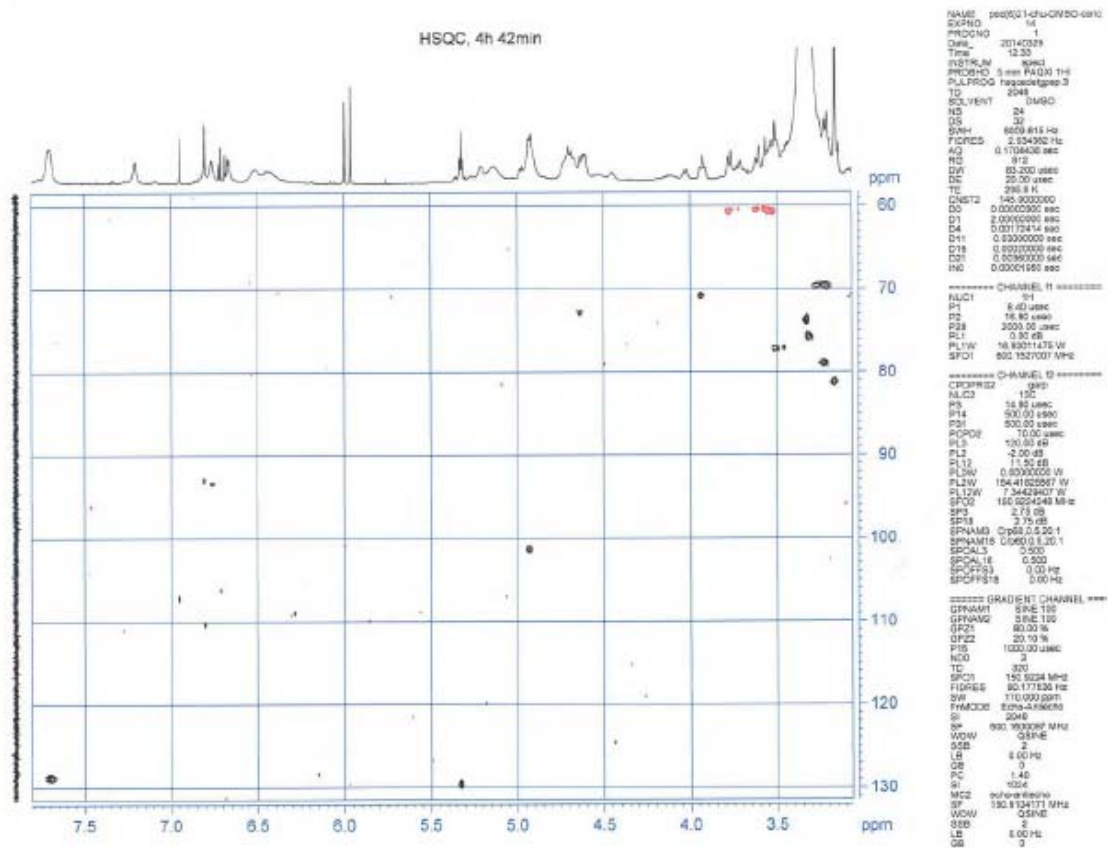
===== GRADIENT CHANNEL =====
GPNAM1 SINE 100
GPZ1 10.00 %
P16 1900.00 usec
ND0 1
TD 320
SFO1 600.1828 MHz
FIDRES 18.780022 Hz
SN 18.013 ppm
F-NUC1 13C
SI 1024
SF 600.1800008 MHz
WDW SINE
SSB 0
LB 0.00 Hz
GB 0
PC 0.80
SI 1024
MC2 OF
SF 600.1800101 MHz
WDW SINE
SSB 0
LB 0.00 Hz
GB 0
    
```

Figure S80. COSY Spectrum of Compound 6 in DMSO-*d*<sub>6</sub>







Figure S83. HSQC Spectrum of Compound 6 in DMSO- $d_6$

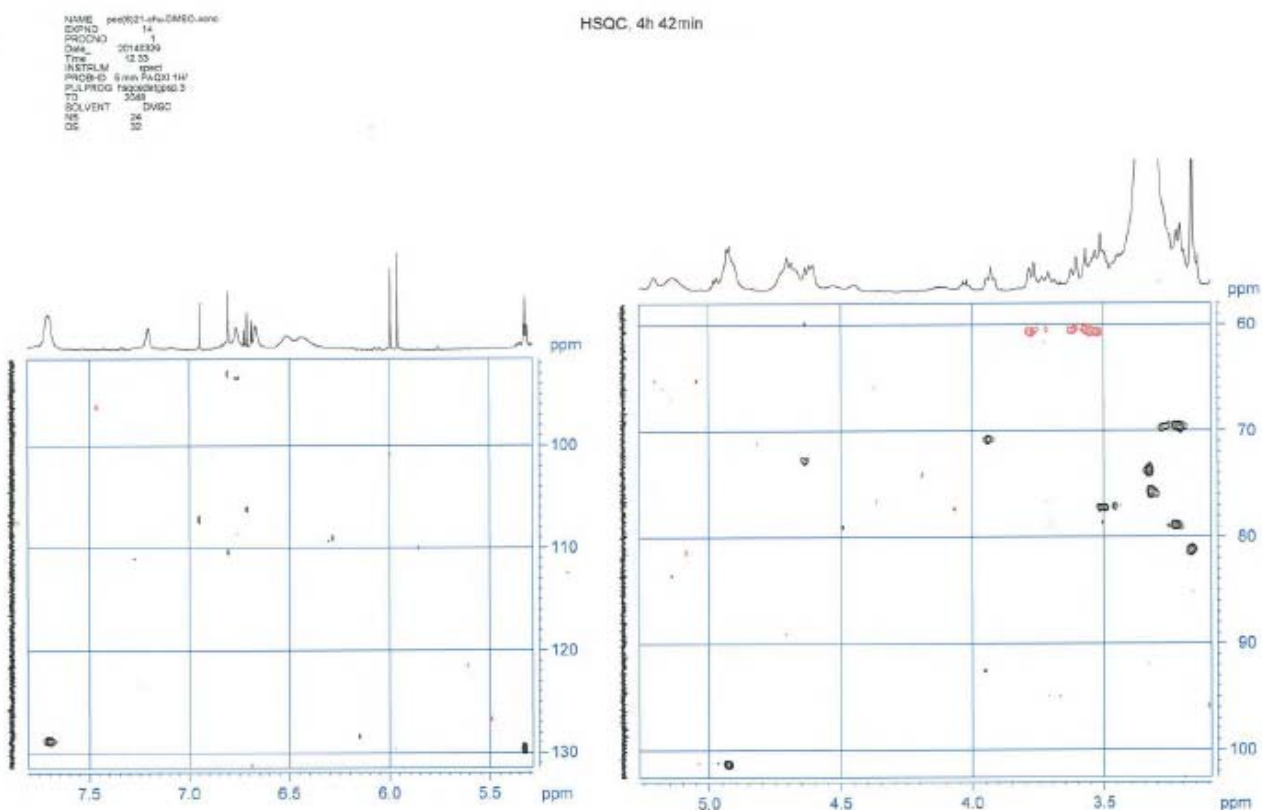
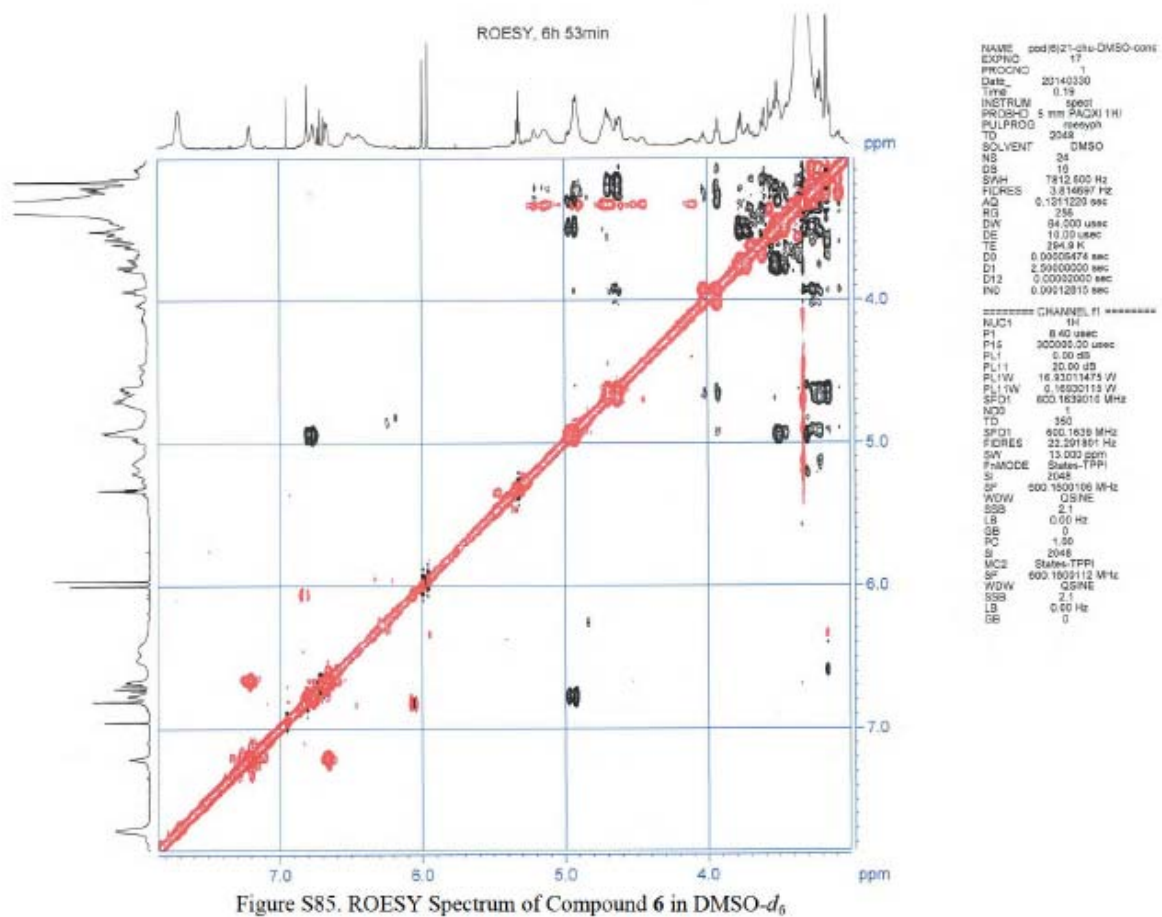


Figure S84. HSQC Spectrum of Compound 6 in DMSO- $d_6$



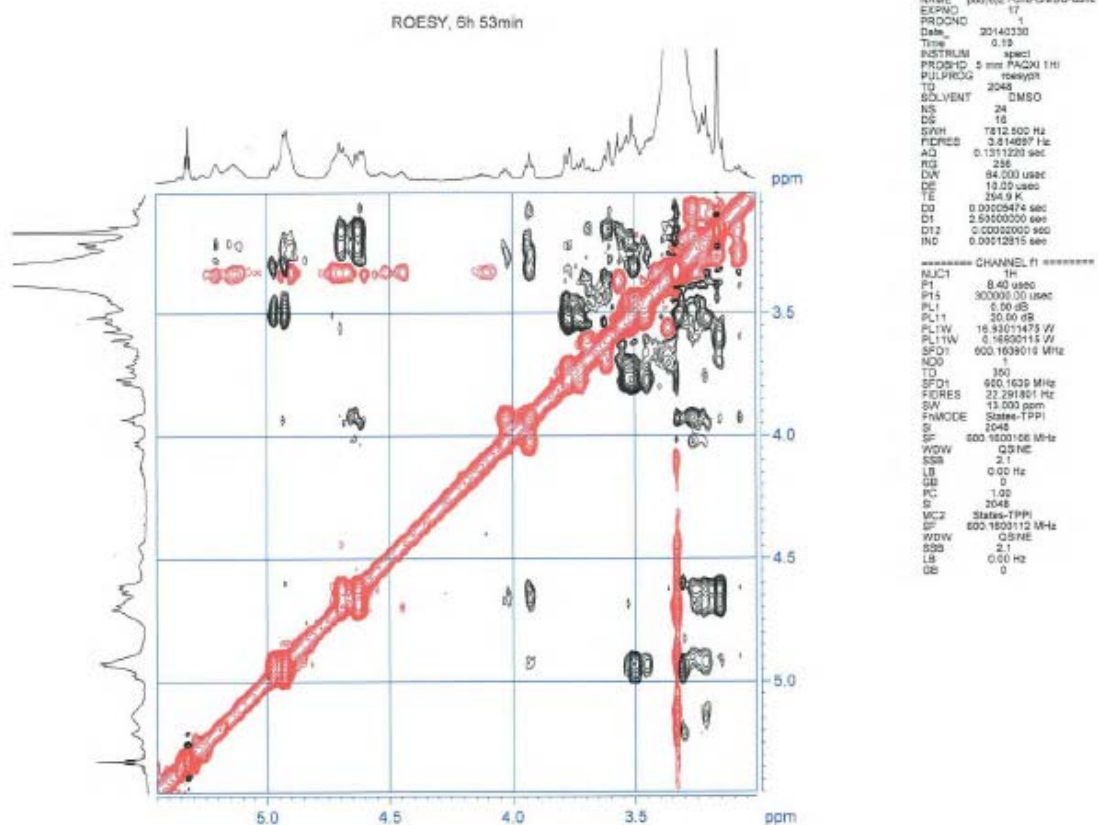
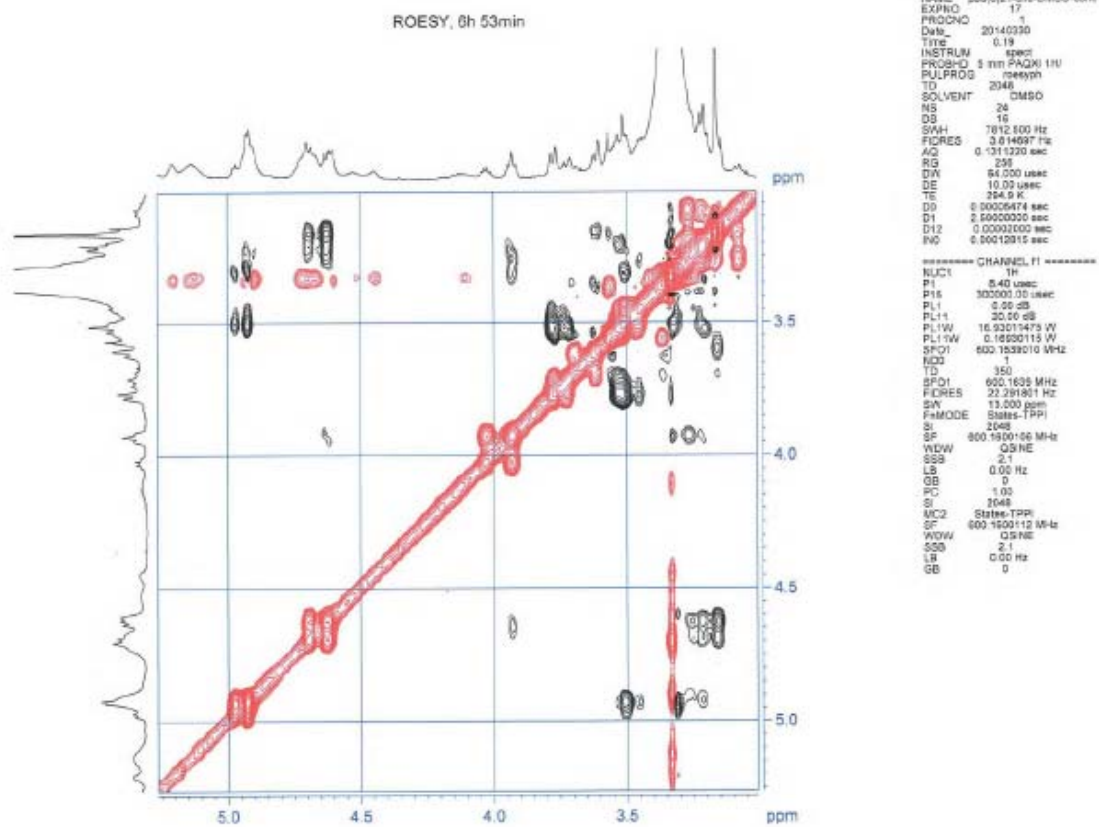


Figure S86. ROESY Spectrum of Compound 6 in DMSO-*d*<sub>6</sub>

Figure S87. ROESY Spectrum of Compound **6** in DMSO- $d_6$

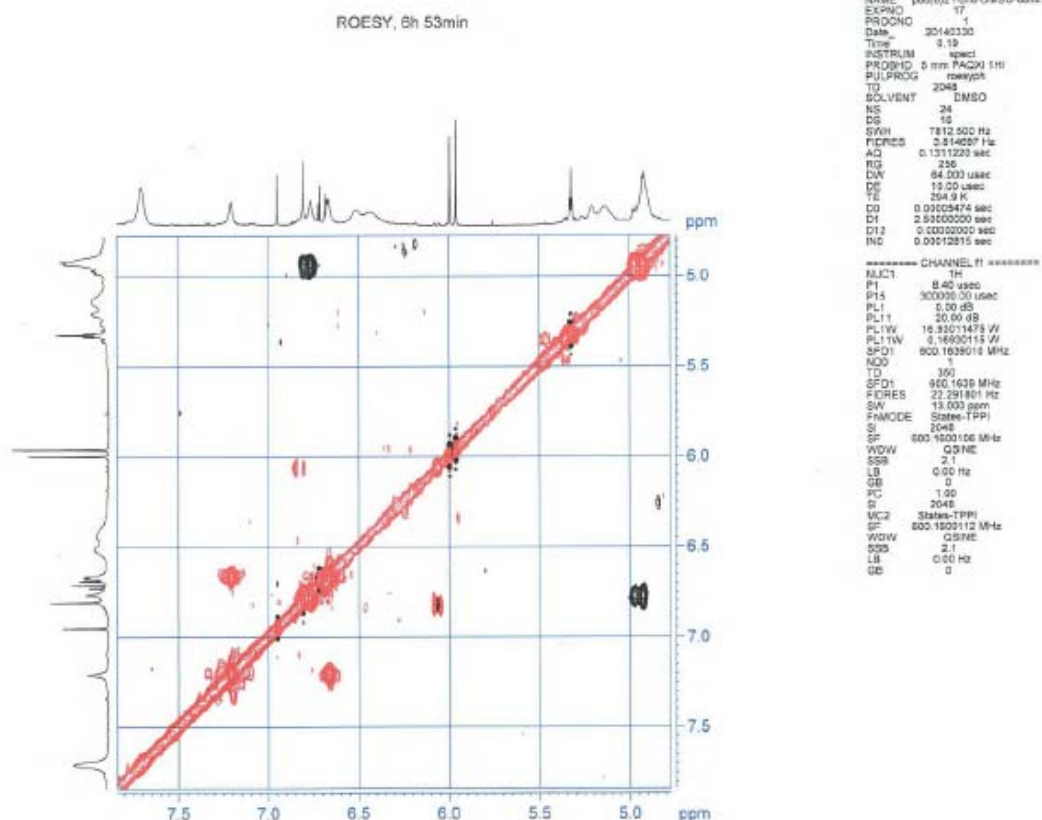


Figure S88. ROESY Spectrum of Compound 6 in DMSO-*d*<sub>6</sub>