

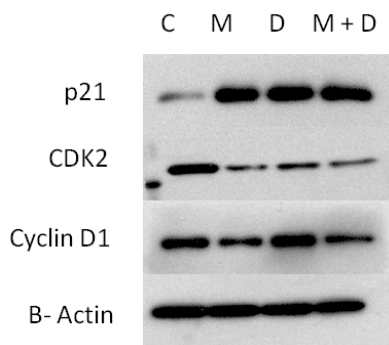
Supplementary Material

Dutasteride and Metformin Reduce Growth of LNCaP Cells and Alter the SREBP-1 Pathway

Rickvinder Besla¹, Natalie Venier¹, Alexandra Colquhoun¹, Neil E. Fleshner², Laurence H. Klotz¹, and Vasundara Venkateswaran^{1*}

¹Division of Urology, Sunnybrook Health Sciences Centre

²Division of Urology, Princess Margaret Hospital and, Toronto, ON, Canada



Supplementary Fig. Metformin and dutasteride in combination resulted in altered expression of cell cycle regulatory molecules, with increase in expression of p21 and decreased cyclin D1 expression in LNCaP cells *in vitro*. (C – Control; M - Metformin; D - Dutasteride; M+D – Metformin + Dutasteride)