

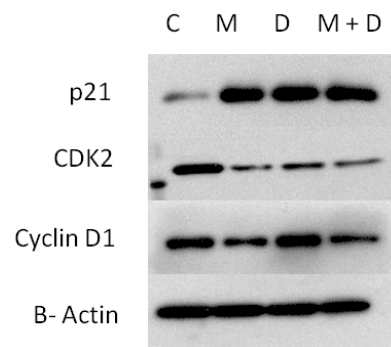
## Supplementary Material

### Dutasteride and Metformin Reduce Growth of LNCaP Cells and Alter the SREBP-1 Pathway

Rickvinder Besla<sup>1</sup>, Natalie Venier<sup>1</sup>, Alexandra Colquhoun<sup>1</sup>, Neil E. Fleshner<sup>2</sup>, Laurence H. Klotz<sup>1</sup>, and Vasundara Venkateswaran<sup>1\*</sup>

<sup>1</sup>Division of Urology, Sunnybrook Health Sciences Centre

<sup>2</sup>Division of Urology, Princess Margaret Hospital and, Toronto, ON, Canada



**Supplementary Fig.** Metformin and dutasteride in combination resulted in altered expression of cell cycle regulatory molecules, with increase in expression of p21 and decreased cyclin D1 expression in LNCaP cells *in vitro*. (C – Control; M - Metformin; D - Dutasteride; M+D – Metformin + Dutasteride)