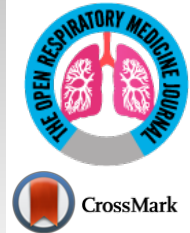




# The Open Respiratory Medicine Journal Supplementary Material

Content list available at: <https://openrespiratorymedicinejournal.com>



## Prevalence and Predictors of Ocular Complications in Obstructive Sleep Apnea Patients: A Cross-sectional Case-control Study

Nesreen E. Morsy<sup>1</sup>, Badawi E Amani<sup>2</sup>, Ahmad A Magda<sup>1</sup>, Awadalla J Nabil<sup>3</sup>, Seithikurippu R. Pandi-Perumal<sup>4</sup>, Ahmed S. BaHammam<sup>5</sup>, David Warren Spence<sup>6</sup>, Per O. Lundmark<sup>7</sup> and Zaki FW Zaki<sup>8,\*</sup>

<sup>1</sup>Department of Chest Medicine, Faculty of Medicine, Mansoura University, Mansoura, Egypt

<sup>2</sup>Department of Ophthalmology, Mansoura Ophthalmic center, Faculty of Medicine, Mansoura University, Mansoura, Egypt

<sup>3</sup>Community Medicine Department, Faculty of Medicine, Mansoura University, Mansoura, Egypt

<sup>4</sup>Somnogen Canada Inc., College Street, Toronto, ON, Canada

<sup>5</sup>Department of Medicine, College of Medicine, The University Sleep Disorders Center, King Saud University, Riyadh, Saudi Arabia

<sup>6</sup>Independent Research Consultant, Toronto, Canada

<sup>7</sup>Faculty of Health and Social Sciences, Department of Optometry, Radiography and Lighting Design, Campus Kongsberg (5346), Norway

<sup>8</sup>Somnologist, Sleep Research Unit, Department of Psychiatry, Faculty of Medicine, Mansoura University, Mansoura, Egypt

<sup>9</sup>Mansoura University Sleep Center, Mansoura, Egypt

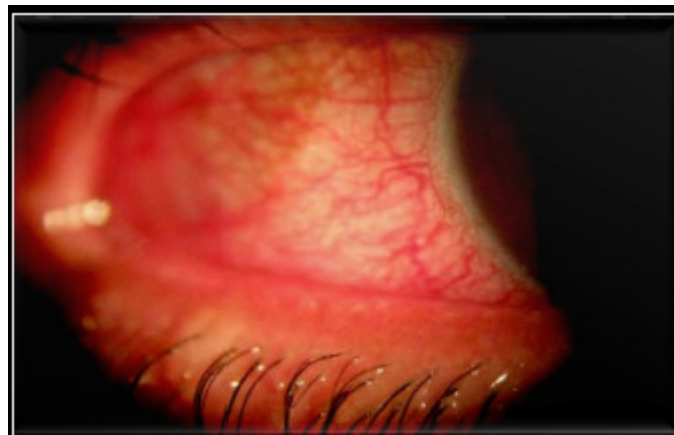
### Article History

Received: February 16, 2019

Revised: May 27, 2019

Accepted: June 23, 2019

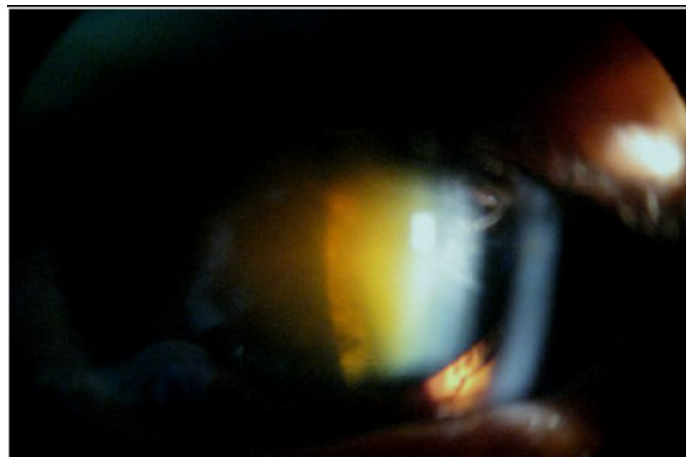
### SUPPLEMENTARY FIGURES AND TABLES



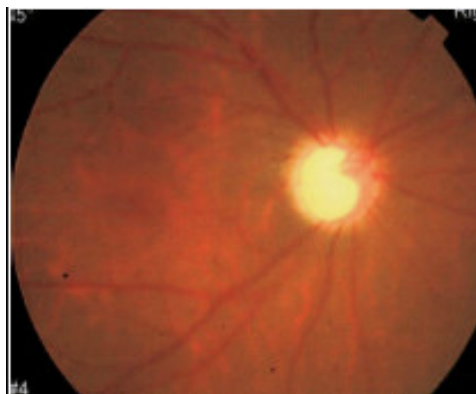
**Fig. (S1).** This illustration shows conjunctival hyperemia with conjunctival vessels injection in a male patient 50 years old with severe sleep apnea.



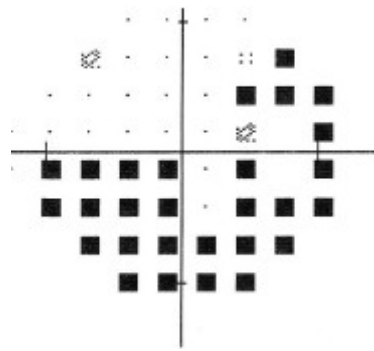
**Fig. (S2).** This figure shows mild conjunctival chalasis with chronic irritation and instable tear film.



**Fig. (S3).** It shows nuclear and cortical cataract in a patient 49 years old with moderate-severe sleep apnea.



**Fig. (S4a).** A Shows Fundus photo of the optic disc of a female patient 60 years old with cup/disc ratio 0.9 and totally loss of neuroretinal rim in the temporal part.



**Fig. (S4b).** The visual field shows lower hemifield defect, mean deviation (MD):-17.96 dB and pattern standard 15.24 dB.

---

© 2019 Morsy *et al.*

This is an open access article distributed under the terms of the Creative Commons Attribution 4.0 International Public License (CC-BY 4.0), a copy of which is available at: <https://creativecommons.org/licenses/by/4.0/legalcode>. This license permits unrestricted use, distribution, and reproduction in any medium, provided the original author and source are credited.